



## D&G SPLIT ENTRIES

When you buy a **D&G** split-entry, you get an excellent value because, although you purchase only two modules from the manufacturer, you end up with the bonus space of a complete lower level. By finishing that lower level, you can almost double your living space for a very modest price. Or if you want single-level living, the lower level will serve handsomely as a workshop and two-car garage. We offer hundreds of options including cathedral ceilings. Let us know what you want; we can customize it to fit your needs.

As a representative example of the many split-entries available from **D&G**, check out the open spaces of the ARLINGTON below and, if the ARLINGTON doesn't do it for you, browse through the many other split-entry floor plans on the following pages.

If you want a split-entry starter home or one with four bedrooms and 2 baths, **D&G** has it.

### THE ARLINGTON

Wide open daytime rooms, a master and two other bedrooms.

#### **D&G** Split-Entry

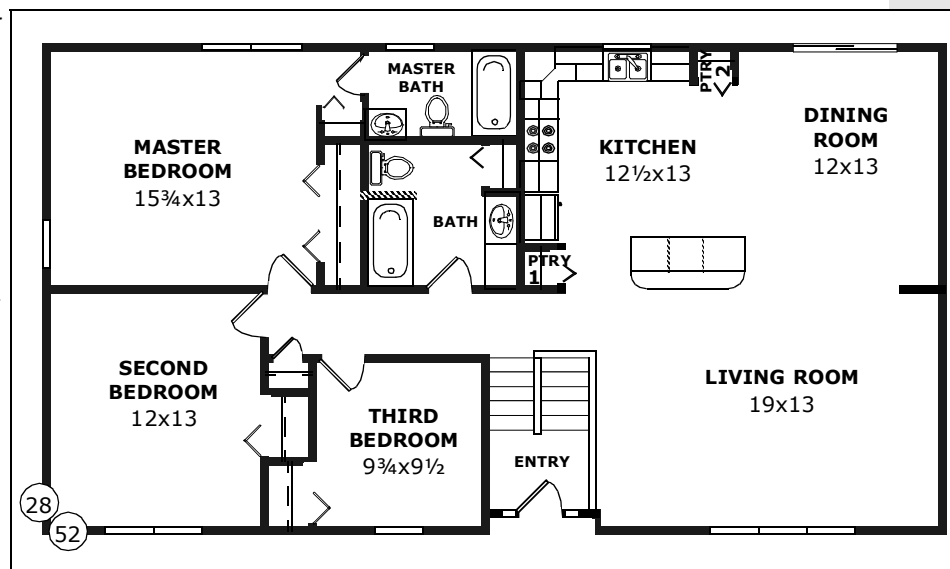
Model Number: SS-202

Size: 28x52 (1430sqft)

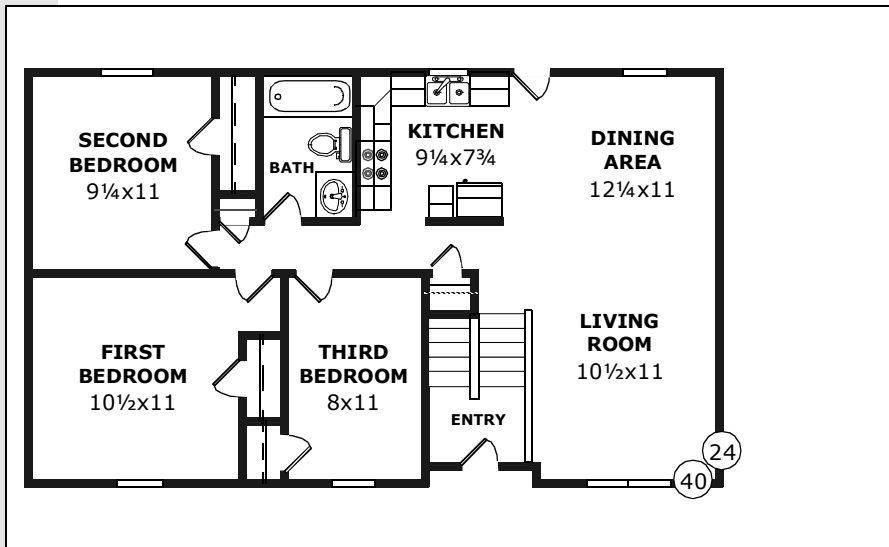
Rooms: 6

Bedrooms: 3

Baths: 2



SPLIT-ENTRY



### THE ALLEGHENY

Spacious kitchen/dining area with three bedrooms.

#### **D&G** Split-Entry

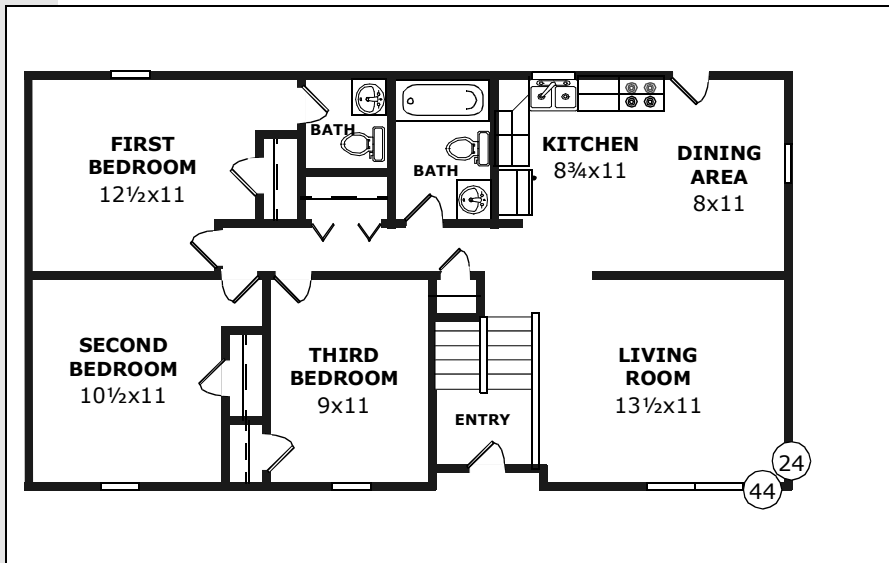
Model Number: SS-180

Size: 24x40 (946 sqft)

Rooms: 5

Bedrooms: 3

Baths: 1



### THE BARNESLEY

Six nice rooms and one-and-one-half baths.

#### **D&G** Split-Entry

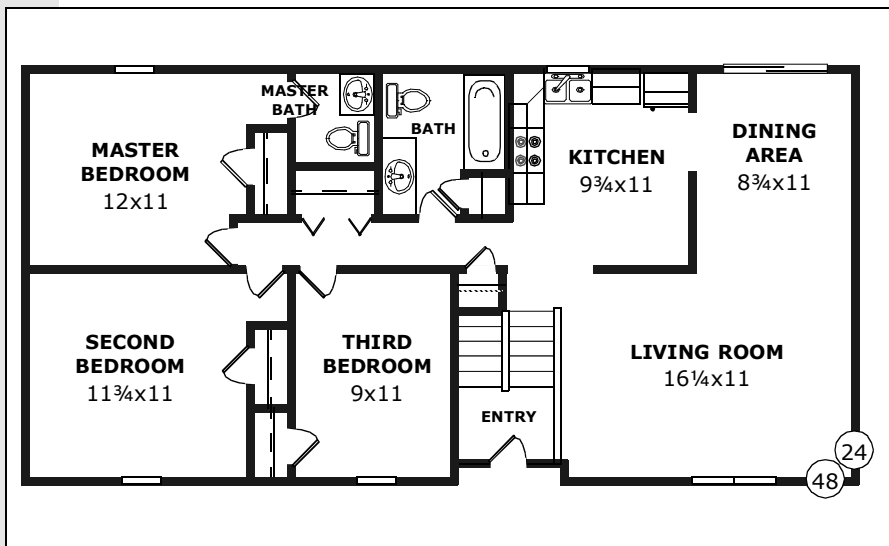
Model Number: SS-181

Size: 24x44 (1041 sqft)

Rooms: 5

Bedrooms: 3

Baths: 1½



### THE GRAFTON

Almost qualifies as a six-room dwelling.

#### **D&G** Split-Entry

Model Number: SS-182

Size: 24x48 (1136 sqft)

Rooms: 6

Bedrooms: 3

Baths: 1½

## THE OAKMONT

Three comfortable bedrooms and a large living room.

### Split-Entry

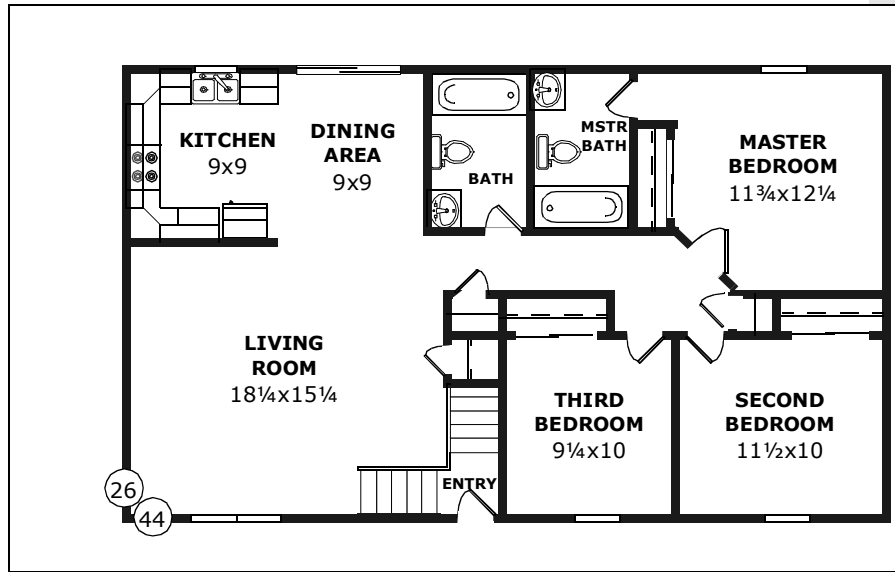
Model Number: SS-192

Size: 26x44 (1144 sqft)

Rooms: 5

Bedrooms: 3

Baths: 2



## THE CANTEBURY

Comfortable rooms and a laundry where you need it.

### Split-Entry

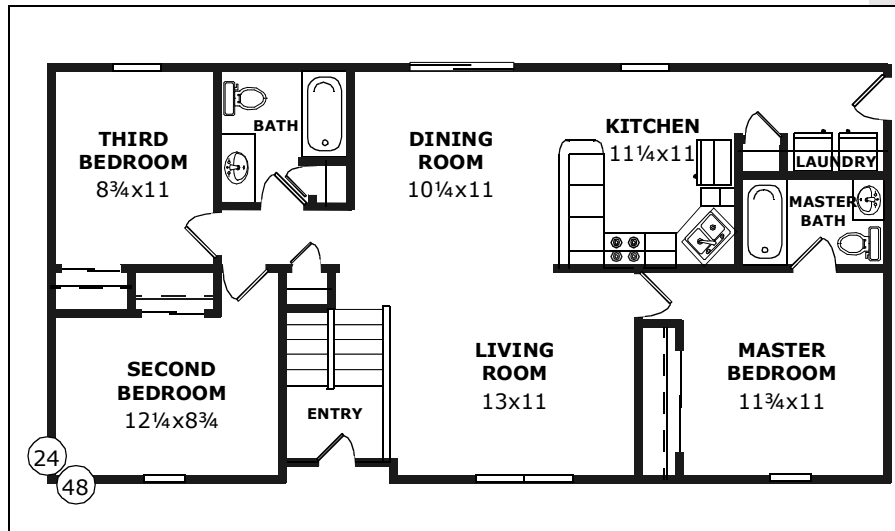
Model Number: SS-183

Size: 24x48 (1136 sqft)

Rooms: 6

Bedrooms: 3

Baths: 2



## THE CLARION

Ample master bedroom with a private shower.

### Split-Entry

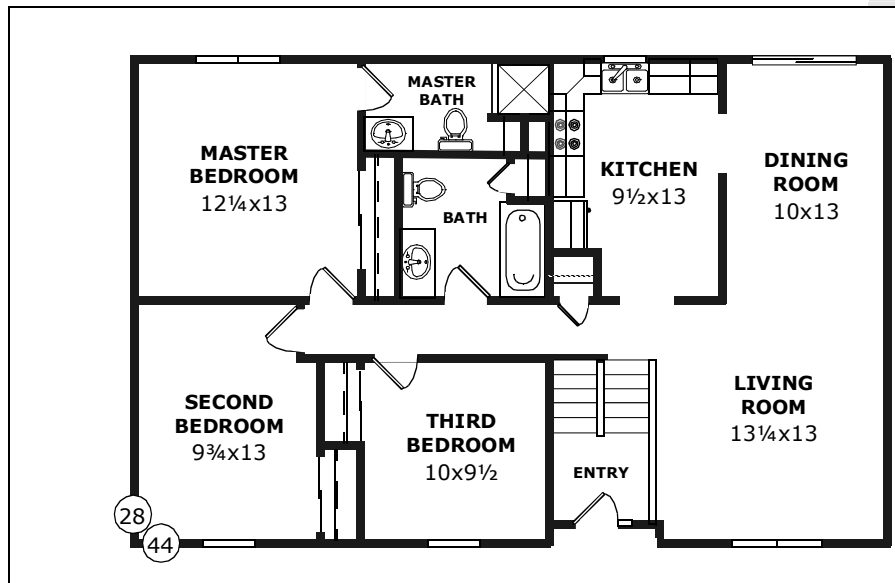
Model Number: SS-184

Size: 28x44 (1210 sqft)

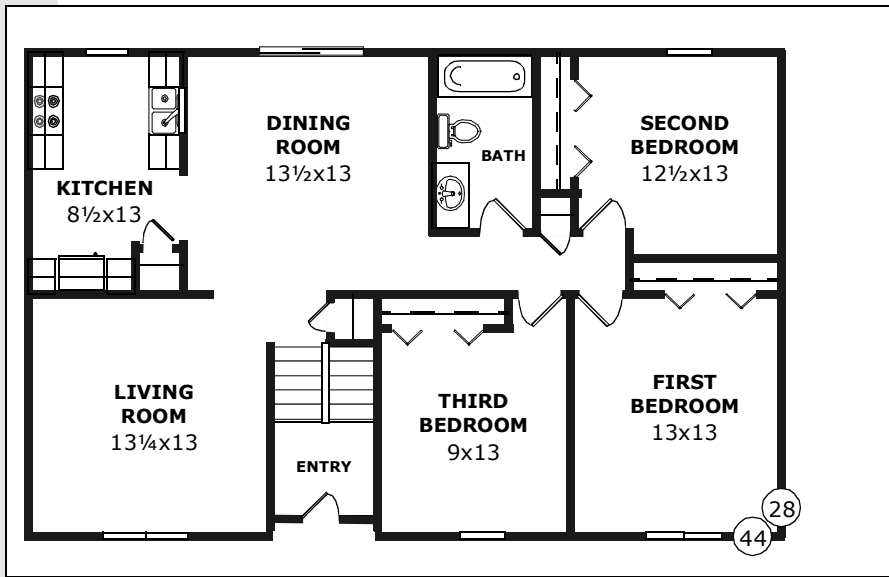
Rooms: 6

Bedrooms: 3

Baths: 1 3/4



SPLIT-ENTRY

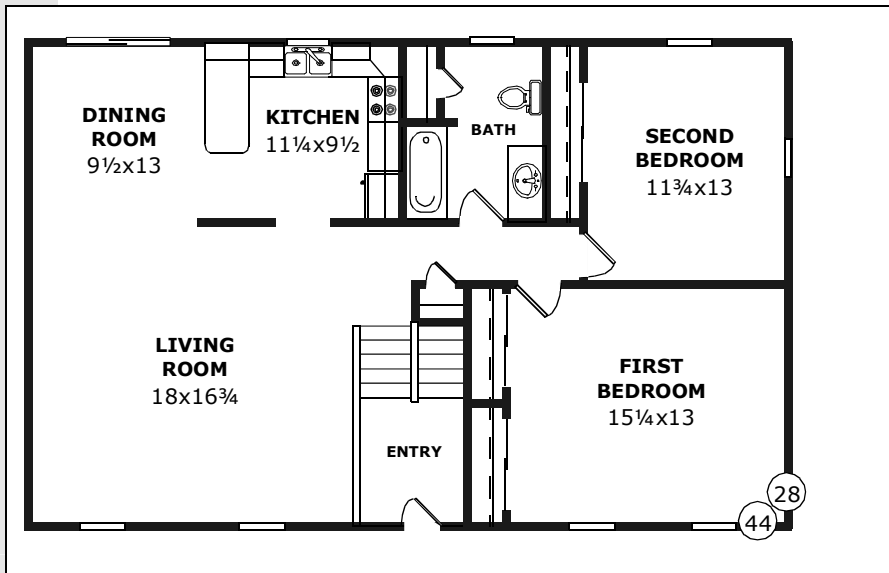


### THE FRANKLIN

Efficient kitchen, a formal dining room and three good-sized bedrooms.

**D&G Split-Entry**

Model Number: SS-185  
 Size: 28x44 (1210 sqft)  
 Rooms: 6  
 Bedrooms: 3  
 Baths: 1

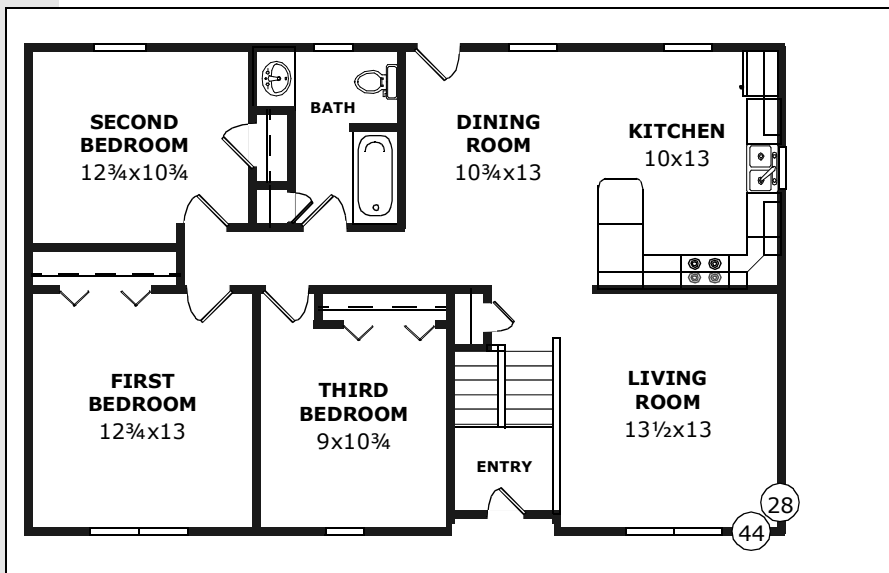


### THE HARRISON

Huge living room perfect for the entertaining family.

**D&G Split-Entry**

Model Number: SS-186  
 Size: 28x44 (1210 sqft)  
 Rooms: 5  
 Bedrooms: 2  
 Baths: 1



### THE LIVINGSTON

Open and very spacious relationship between the kitchen and the dining room.

**D&G Split-Entry**

Model Number: SS-187  
 Size: 28x44 (1210 sqft)  
 Rooms: 6  
 Bedrooms: 3  
 Baths: 1

## THE SPALDING

An interesting kitchen layout and an isolated master suite.

### Split-Entry

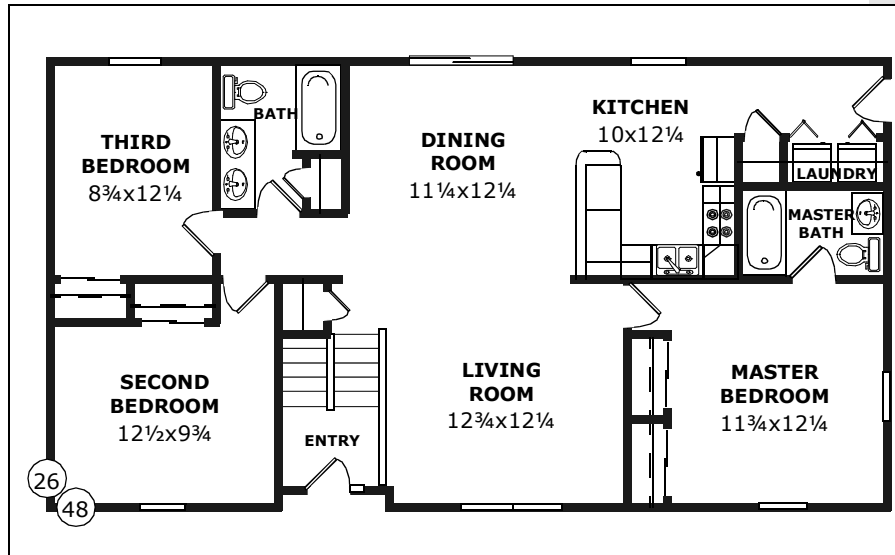
Model Number: SS-189

Size: 26x48 (1248 sqft)

Rooms: 6

Bedrooms: 3

Baths: 2



## THE WOLFDAL

A nice entry configuration and an isolated master suite.

### Split-Entry

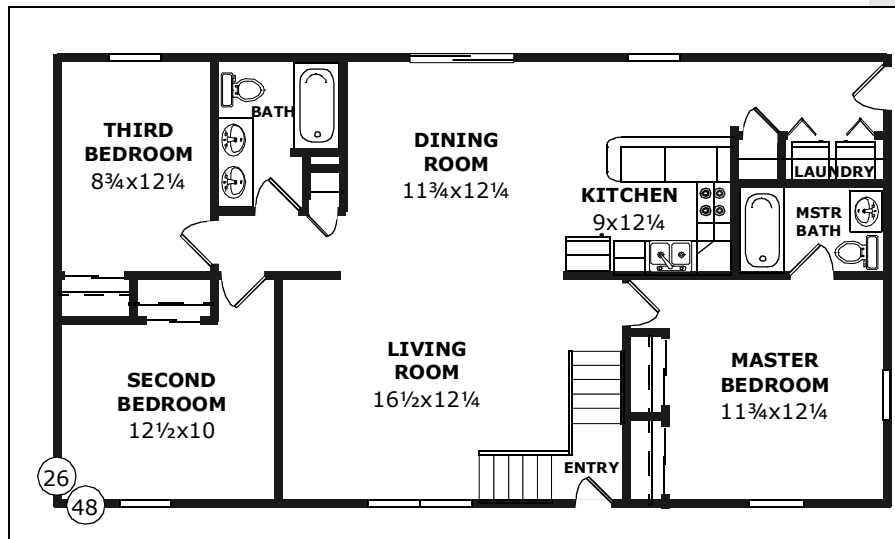
Model Number: SS-190

Size: 26x48 (1248 sqft)

Rooms: 6

Bedrooms: 3

Baths: 2



## THE RUTLEDGE

A great laundry location and separated sleeping facilities.

### Split-Entry

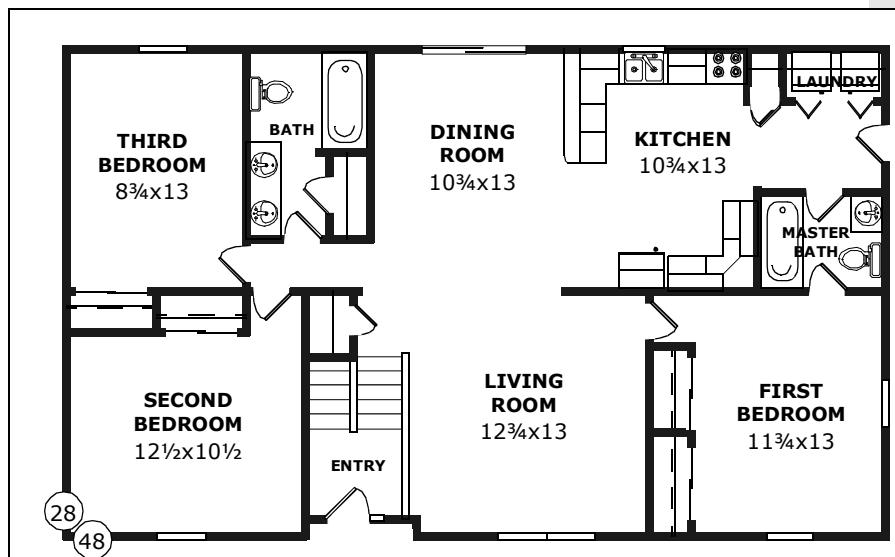
Model Number: SS-191

Size: 28x48 (1320 sqft)

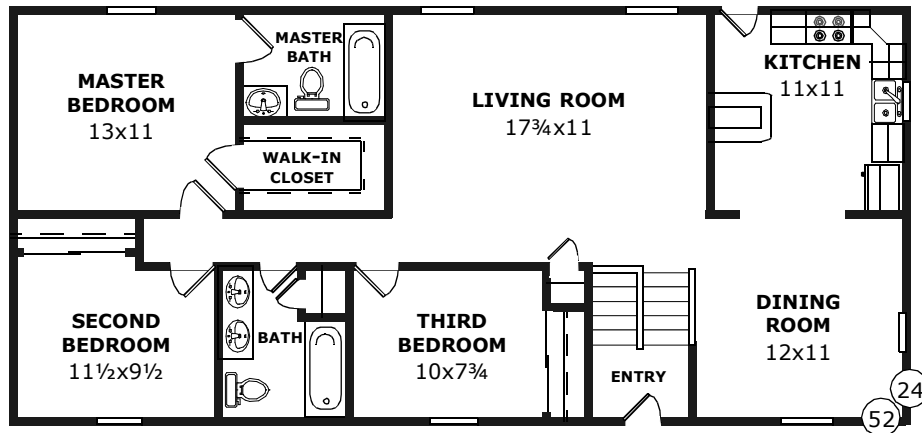
Rooms: 6

Bedrooms: 3

Baths: 2



SPLIT-ENTRY



**THE MONROE**

Cheerful open floor plan and six big rooms.

**D&G Split-Entry**

Model Number: SS-193

Size: 26x52 (1352 sqft)

Rooms: 6

Bedrooms: 3

Baths: 1 3/4

**THE PRESTMONT**

Huge living room, formal dining room and a nice master suite with a walk-in closet.

**D&G Split-Entry**

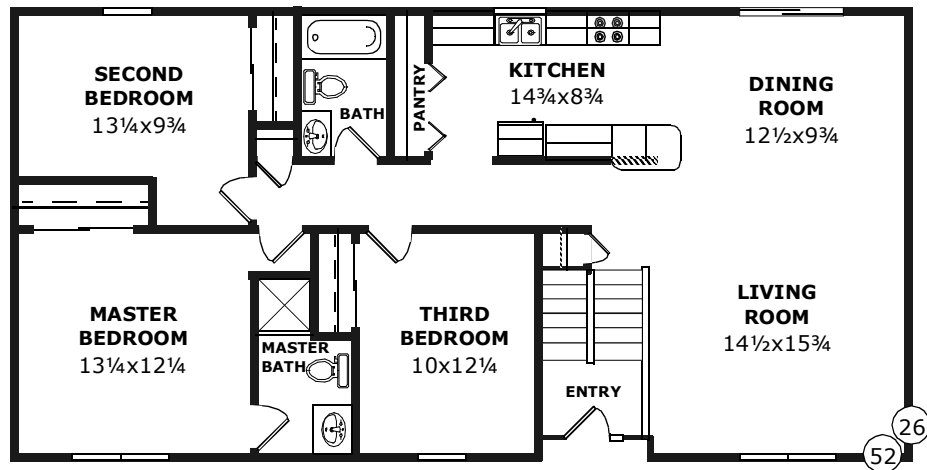
Model Number: SS-188

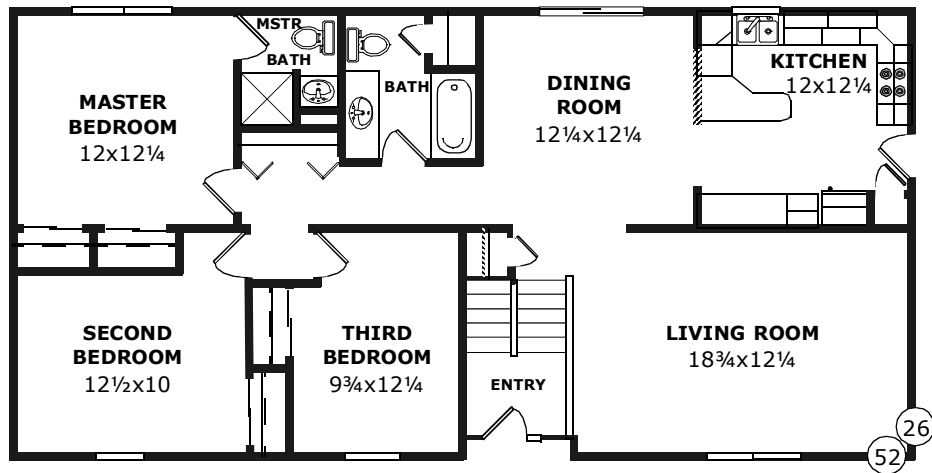
Size: 24x52 (1231 sqft)

Rooms: 6

Bedrooms: 3

Baths: 2





### THE HOMSEA

Sensational front-to-back master suite separated from the two other bedrooms.

#### D&G Split-Entry

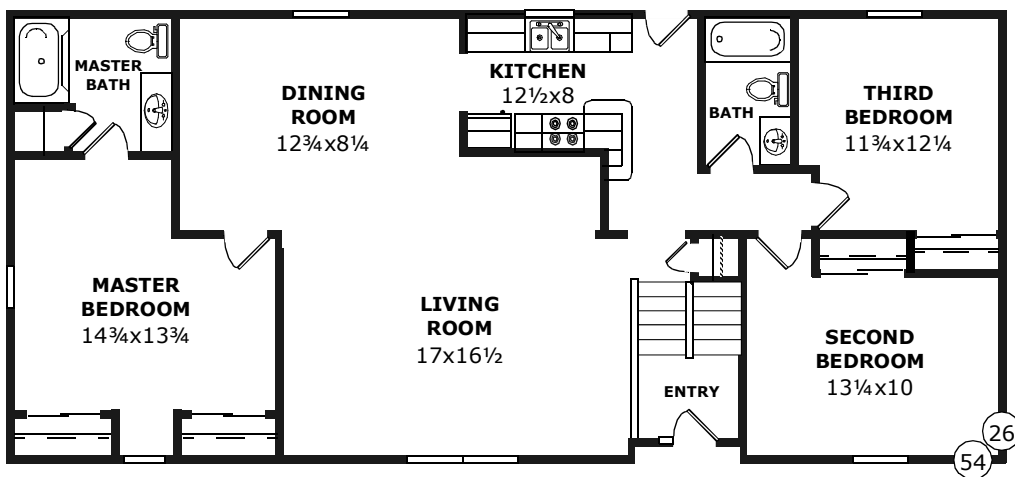
Model Number: SS-195  
 Size: 26x54 (1404 sqft)  
 Rooms: 6  
 Bedrooms: 3  
 Baths: 2

### THE KINGSTON

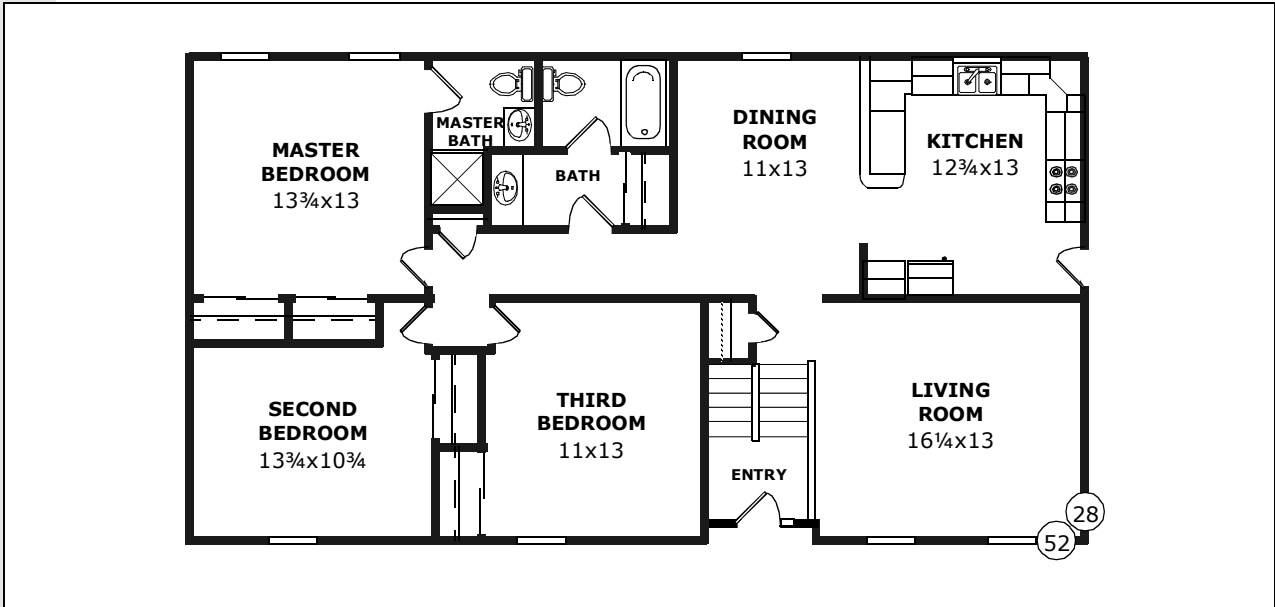
Super kitchen/dining room layout and a lovely master suite.

#### D&G Split-Entry

Model Number: SS-194  
 Size: 26x52 (1352 sqft)  
 Rooms: 6  
 Bedrooms: 3  
 Baths: 1¾



SPLIT-ENTRY



**THE CHARLEMONT**

Huge walk-in closet in the master suite and a fantastic pantry off the large kitchen.

**D&G Split-Entry**

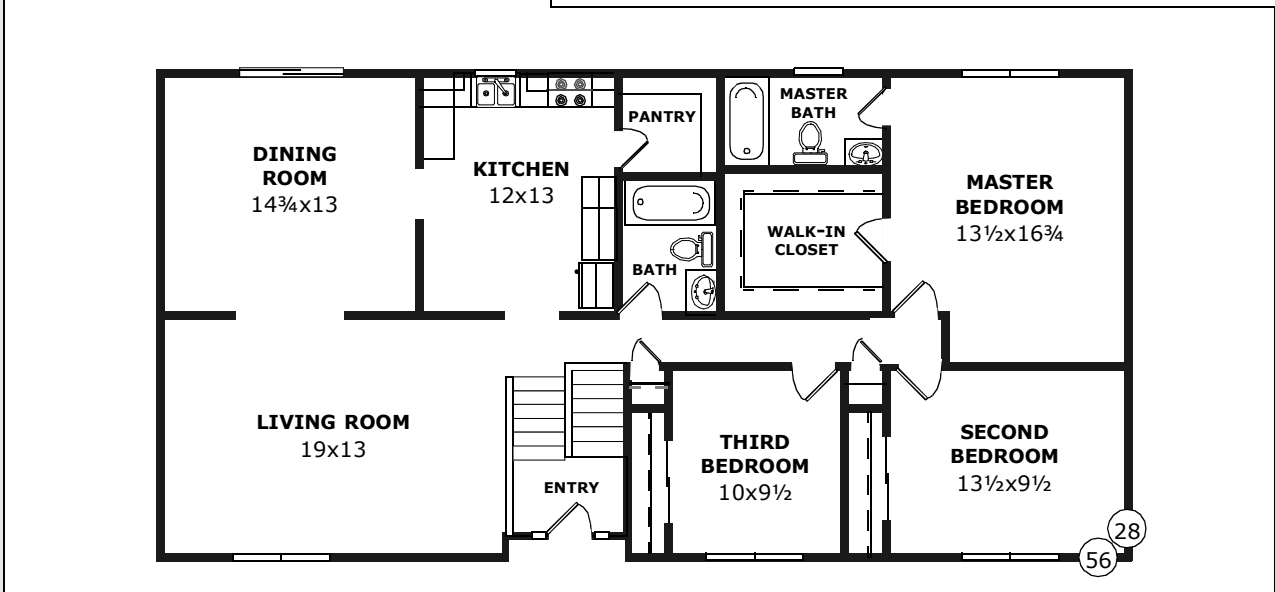
Model Number: SS-197  
 Size: 28x56 (1540 sqft)  
 Rooms: 6  
 Bedrooms: 3  
 Baths: 2

**THE DONORA**

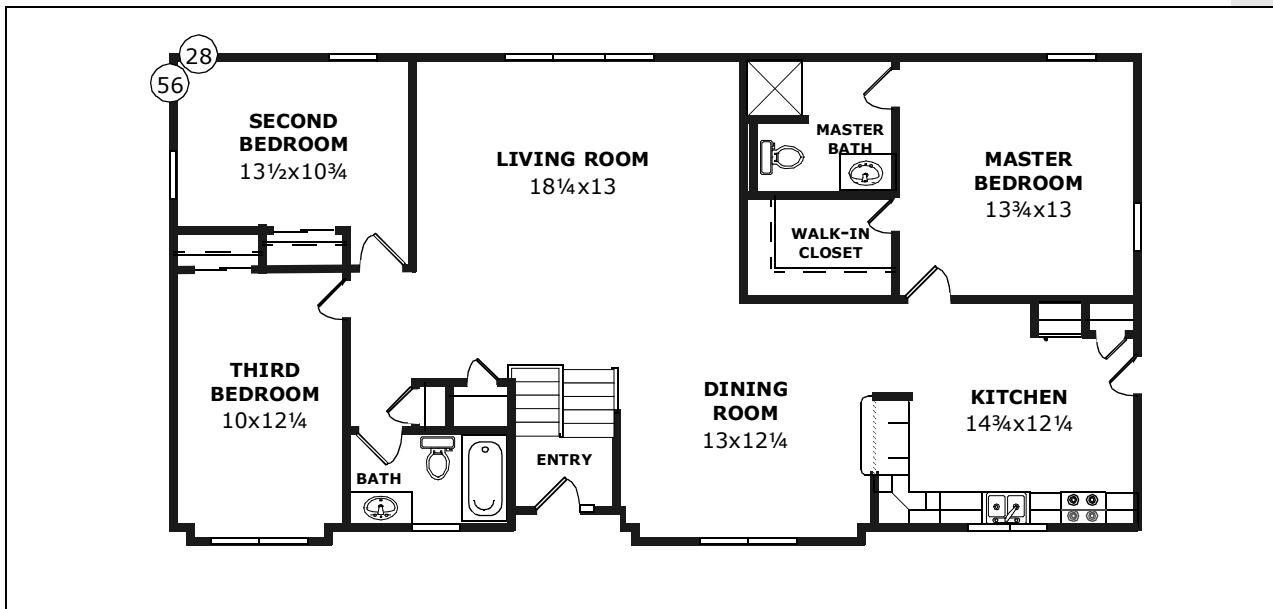
Every one of the six rooms is just plain big and what a great breakfast bar.

**D&G Split-Entry**

Model Number: SS-196  
 Size: 28x52 (1430 sqft)  
 Rooms: 6  
 Bedrooms: 3  
 Baths: 1 3/4







### THE ASHFORD

A sensational four-bedroom plan with two full baths and a huge living room.

#### D&G Split-Entry

Model Number: SS-199

Size: 28x58 (1595 sqft)

Rooms: 7

Bedrooms: 4

Baths: 2

### THE BERKLEY

Front-facing kitchen and dining room and separated sleeping quarters.

#### D&G Split-Entry

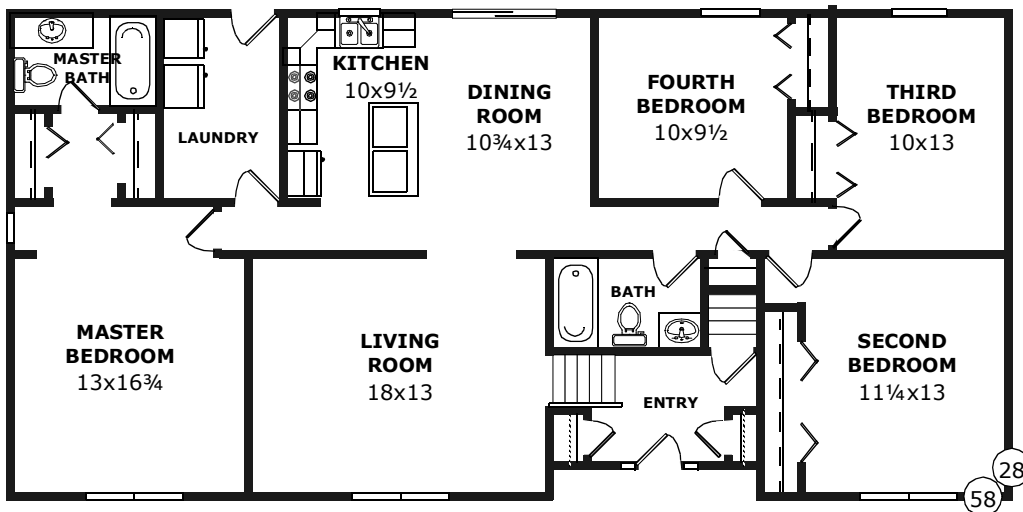
Model Number: SS-198

Size: 28x56 (1540 sqft)

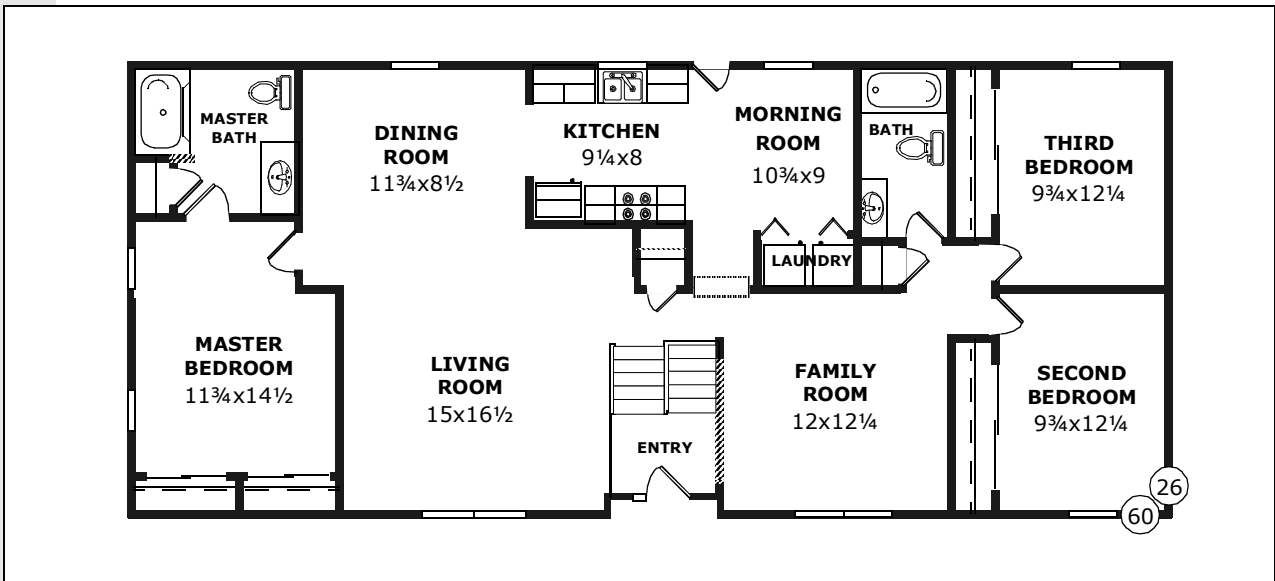
Rooms: 6

Bedrooms: 3

Baths: 1¾



SPLIT-ENTRY



**THE CONVENTRY**

What a huge family room. What a super kitchen with a pantry and what a monster master suite.

**D&G Split-Entry**

Model Number: SS-201  
 Size: 28x62 (1705 sqft)  
 Rooms: 7  
 Bedrooms: 3  
 Baths: 2

**THE AMESBURY**

A central kitchen, two cheerful eating spaces, and front-to-back master suite separated from the other bedrooms.

**D&G Split-Entry**

Model Number: SS-200  
 Size: 26x60 (1560 sqft)  
 Rooms: 8  
 Bedrooms: 3  
 Baths: 2

