



D&G SPECIALS

The **D&G** Specials Series is a collection of floor plans from various manufacturers that are "leaders". A leader is simply a selected plan that a manufacturer is willing to sell at a lower profit so that the marketing people have something to advertise at a low price. The disadvantage of a leader is that manufacturers will only allow selected upgrades and modifications. After all, they would prefer that you buy one of their standard homes.

If one of the plans in the **D&G** Specials Series meets your requirements, you will save 10% to 15% on your new home purchase.

The D&G Specials Series includes:

- capes,
- ranches,
- split-entries, and
- colonials.

So look at the pictures on this page; see what style appeals to you. Then check-out the floor-plans shown in the next few pages. If you find one that works for you, give us a call at:

(978) 373 0800


or send us e-mail at:

dgmodular@aol.com

If **D&G** Specials doesn't do it for you, use the Home Finder on pages 82 and 83 to help you find a house that does.

THE BREWSTER

Comfortable living in a cozy home.

 **Specials Cape**

Model Number: SLC-100

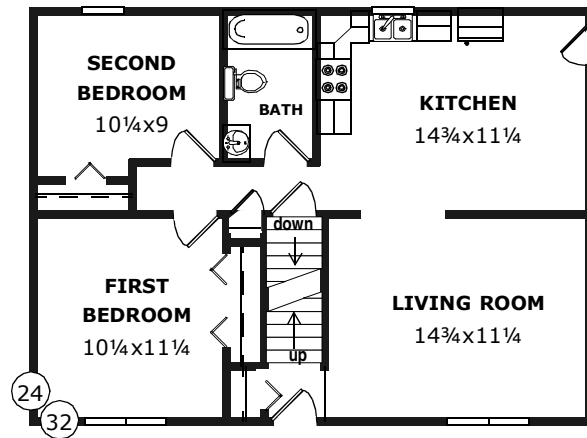
Size: 24x32 (768 sqft)

Rooms: 4

Bedrooms: 2


Baths: 1

Bonus Space: 448 sqft



THE EASTHAM

A slight step up in size at an affordable price.

 **Specials Cape**

Model Number: SLC-101

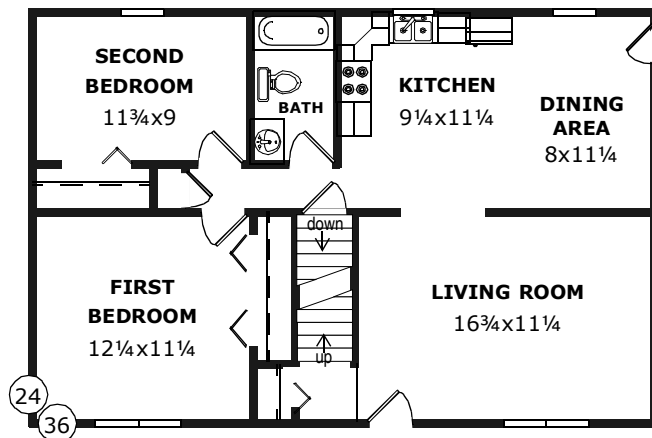
Size: 24x36 (864 sqft)

Rooms: 4

Bedrooms: 2


Baths: 1

Bonus Space: 504 sqft



THE WELLFLEET

Great second bedroom with a walk-in closet.

 **Specials Cape**

Model Number: SLC-102

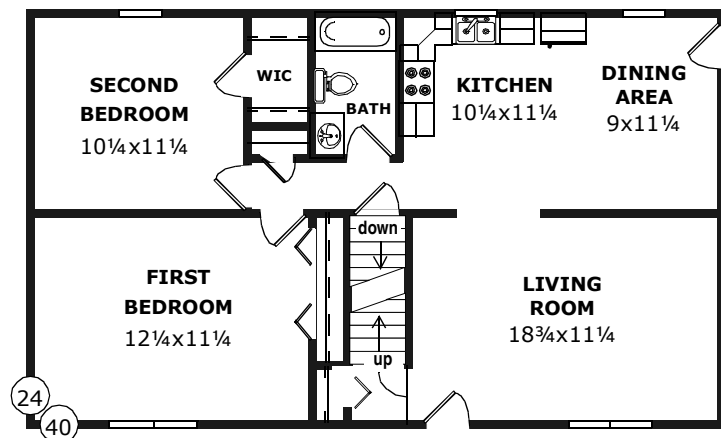
Size: 24x40 (960 sqft)

Rooms: 4

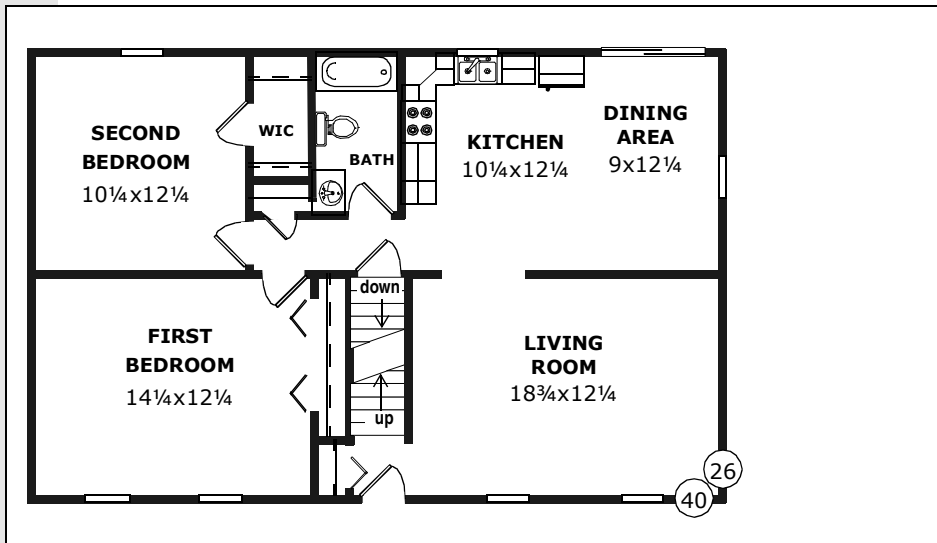
Bedrooms: 2

Baths: 1

Bonus Space: 560 sqft



LITE

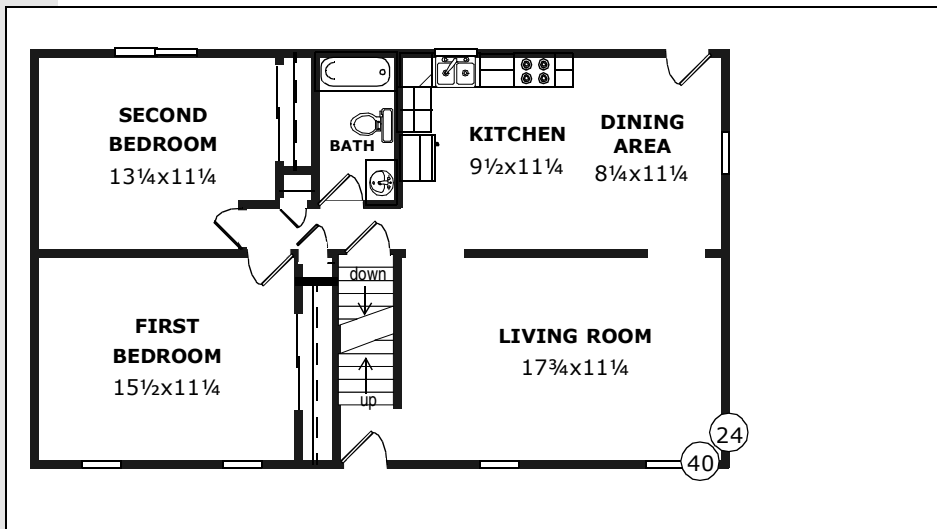


THE ALLENTOWN

Cozy dining area with a sliding door.

D&G Specials **Cape**

- Model Number: SLC-210
- Size: 26x40 (1040 sqft)
- Rooms: 4
- Bedrooms: 2
- Baths: 1
- Bonus Space: 640 sqft

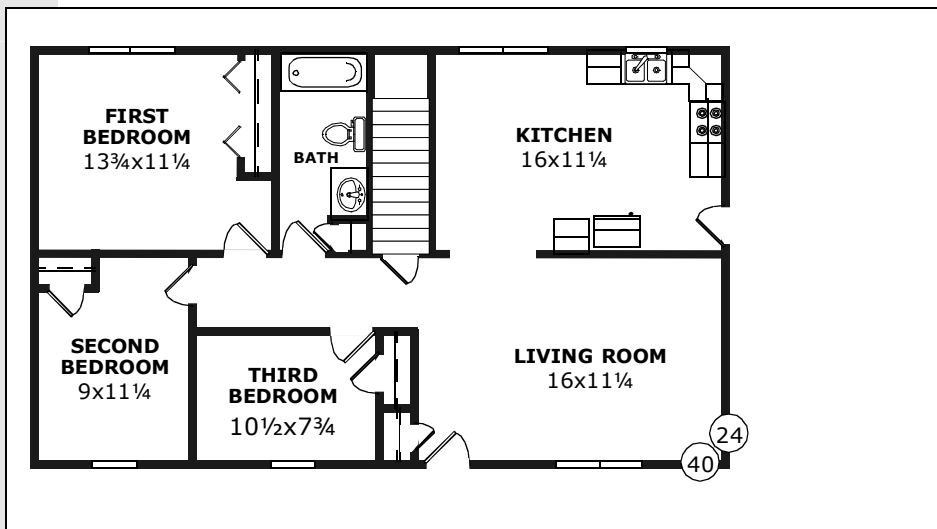


THE PLYMOUTH

Plenty of daytime space and two large bedrooms.

D&G Specials **Cape**

- Model Number: SLC-103
- Size: 24x40 (960 sqft)
- Rooms: 4
- Bedrooms: 2
- Baths: 1
- Bonus Space: 480 sqft



THE ABERDEEN

Single-level living with three bedrooms

D&G Specials **Ranch**

- Model Number: SLR-106
- Size: 24x40 (960 sqft)
- Rooms: 5
- Bedrooms: 3
- Baths: 1

THE WESTLEIGH

Three quiet-time rooms and two large daytime rooms.

 **Specials Ranch**

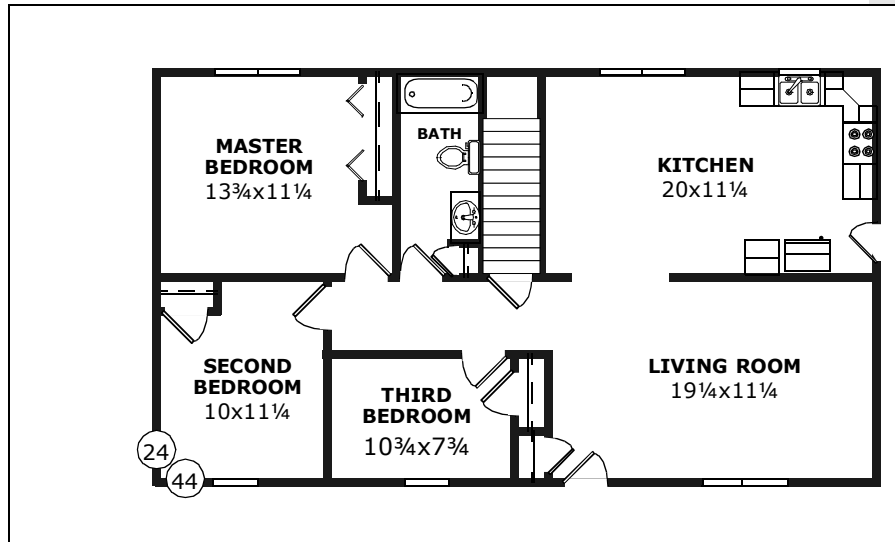
Model Number: SLR-107

Size: 24x44 (1056 sqft)

Rooms: 5

Bedrooms: 3

Baths: 1



THE CAMDEN

Lots of space for a growing family.

 **Specials Ranch**

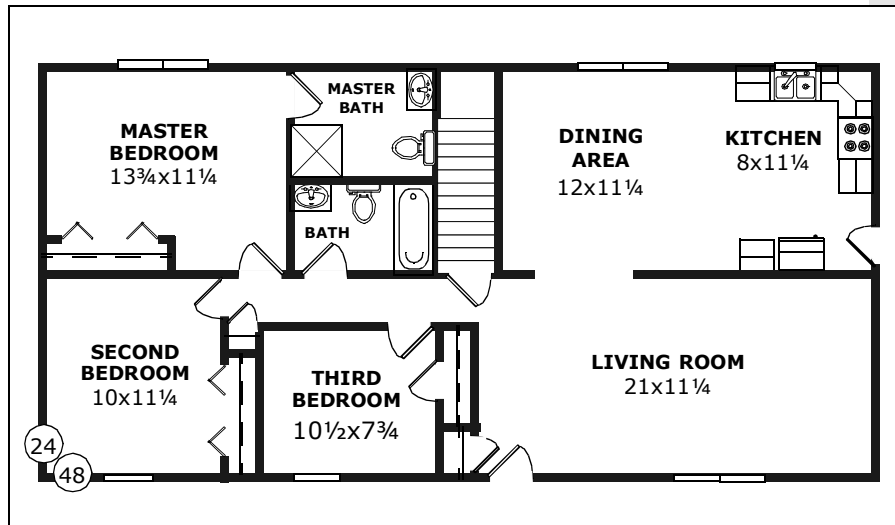
Model Number: SLR-108

Size: 24x48 (1152 sqft)

Rooms: 5

Bedrooms: 3

Baths: 1 3/4



THE GOTHAM

A terrific six-room floor plan.

 **Specials Ranch**

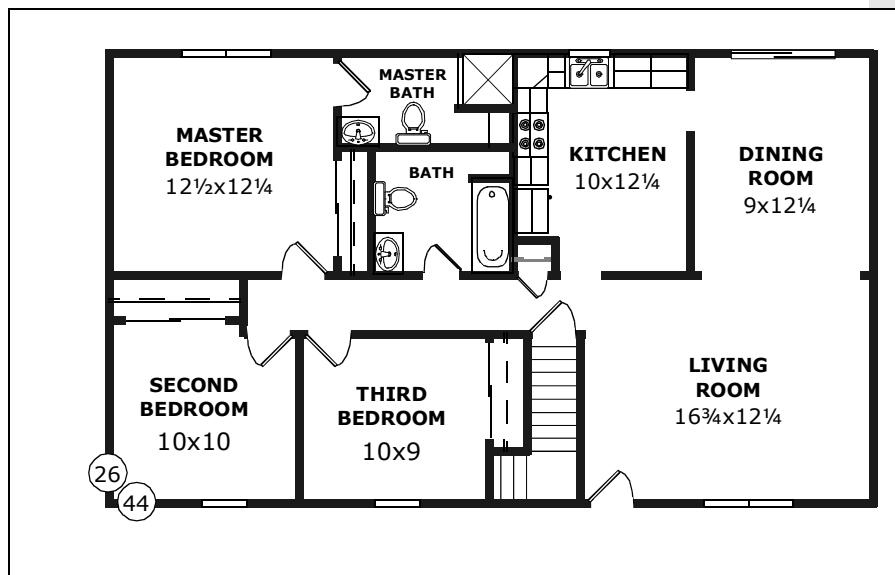
Model Number: SLR-109

Size: 26x44 (1144 sqft)

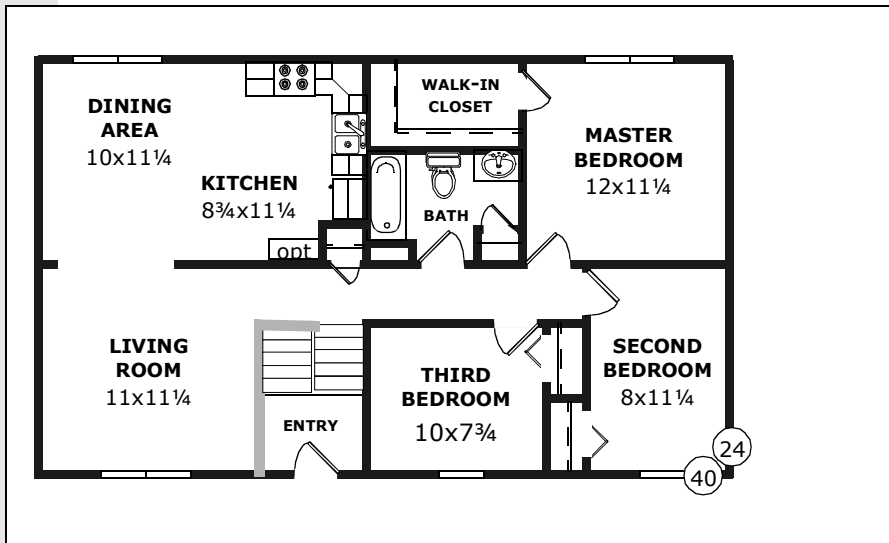
Rooms: 6

Bedrooms: 3

Baths: 1 3/4



LITE



THE STEDFORD

Perfect for a young family.

D&G Specials **Split-Entry**

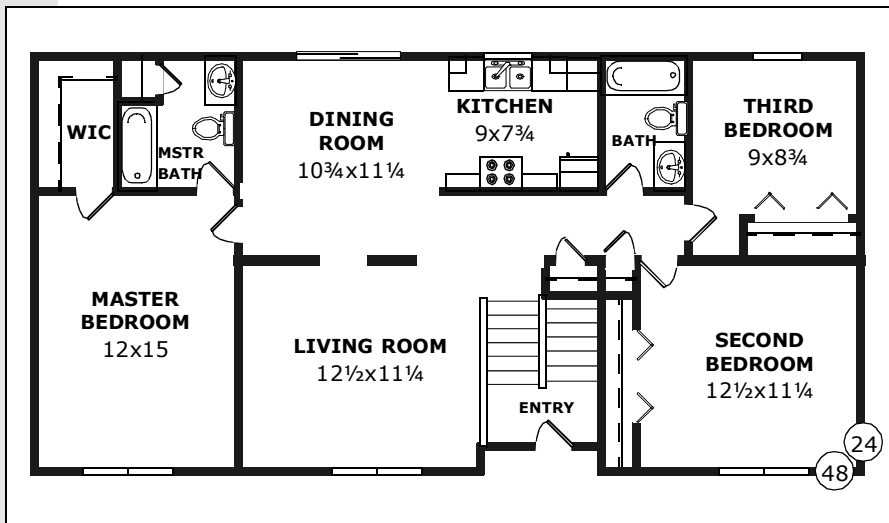
Model Number: SLS-111

Size: 24x40 (960 sqft)

Rooms: 5

Bedrooms: 3

Baths: 1



THE IPSWICH

Spacious with an isolated master suite.

D&G Specials **Split-Entry**

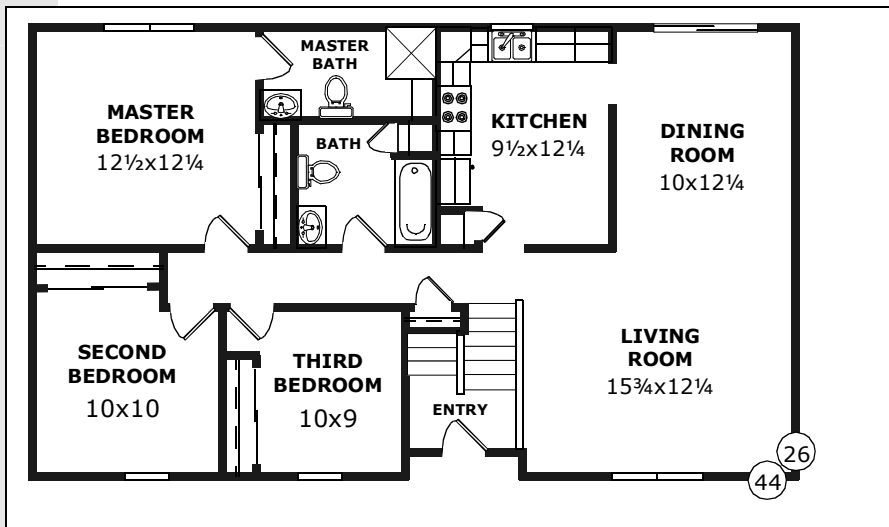
Model Number: SLS-112

Size: 24x48 (1152 sqft)

Rooms: 6

Bedrooms: 3

Baths: 2



THE HANCOCK

Nicely divided spaces.

D&G Specials **Split-Entry**

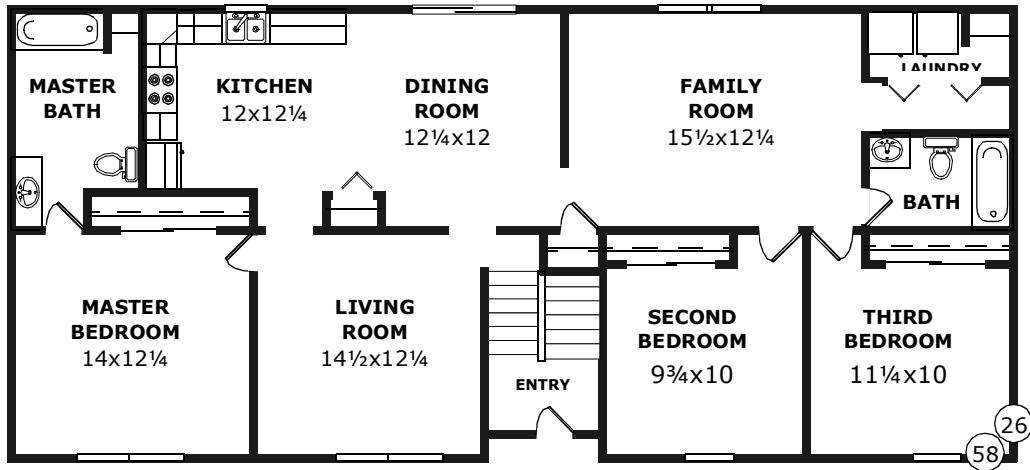
Model Number: SLS-113

Size: 26x44 (1144 sqft)

Rooms: 6

Bedrooms: 3

Baths: 1 3/4



THE SHERWOOD

A spacious plan with separated sleeping quarters.

D&G Specials **Ranch**

Model Number: SLR-110

Size: 26x58 (1508 sqft)

Rooms: 7

Bedrooms: 3

Baths: 2

THE BARRINGTON

Lots of space especially if you finish a portion of the lower level.

D&G Specials **Split-Entry**

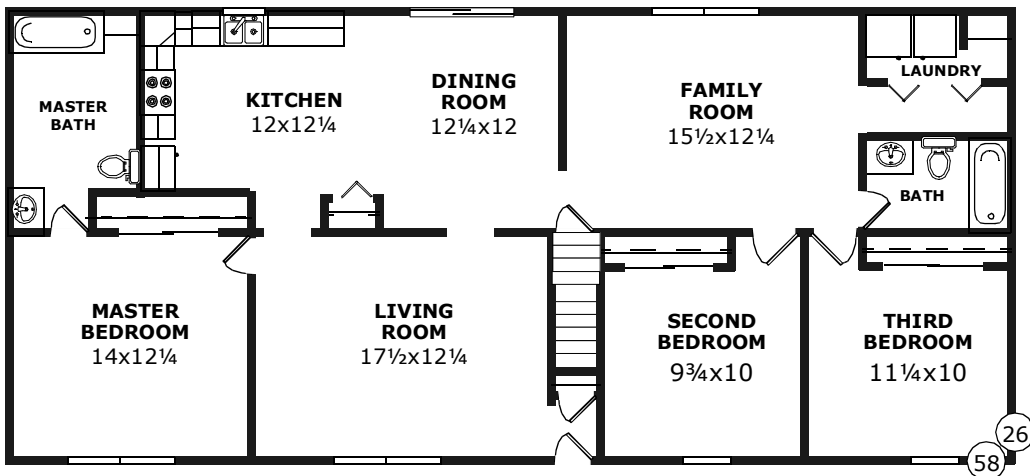
Model Number: SLS-114

Size: 26x58 (1508 sqft)

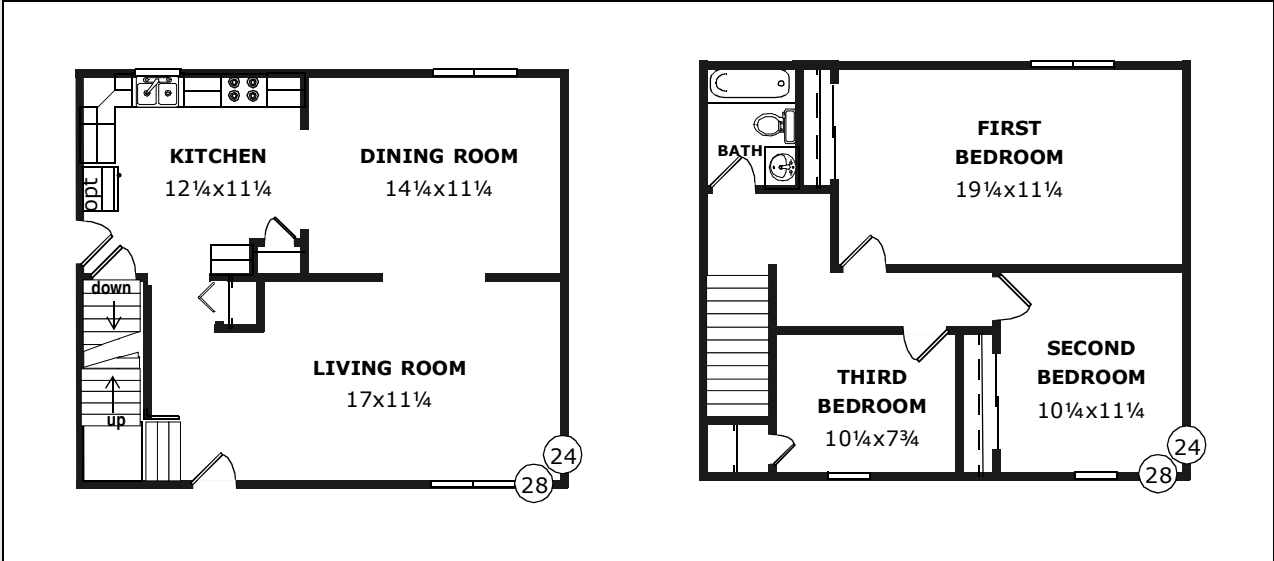
Rooms: 7

Bedrooms: 3

Baths: 2



LITE



THE HANOVER

A walk-in closet and an optional 1st-floor laundry.

Style: **D&G** Specials **Colonial**

Model Number: SLN-105

Size: 24x30 (1440 sqft)

Rooms: 6

Bedrooms: 3

Baths: 1 1/2

THE OXFORD

Compact but perfectly livable.

Style: **D&G** Specials **Colonial**

Model Number: SLN-104

Size: 24x28 (1344 sqft)

Rooms: 6

Bedrooms: 3

Baths: 1

