



## D&G CONTEMPORARIES

If you want an escape from the everyday world or if you want a cozy year-around home, look at the homes below. You can have two, three or four bedrooms and up to 2¾ baths. There are distinctive chalets like the one pictured above; there are ranch styles and genuine two-level contemporaries with a factory finished second floor and a fantastic two-story living room. We offer many options; for instance, you can customize your contemporary by adding a surrounding deck. And, if you have other special requirements, remember we will find a way to meet your needs.

As a representative example of the many contemporaries available from **D&G**, check the LEHIGH out below and, if the LEHIGH doesn't do it for you, browse through the many other contemporary floor plans on the following pages.

If you want a chalet or a spacious home with four bedrooms and 2¾ baths, **D&G** has it.

### THE LEHIGH

Look forward to this escape all week.

#### **D&G** Contemporary Cape

Model Number: SV-410

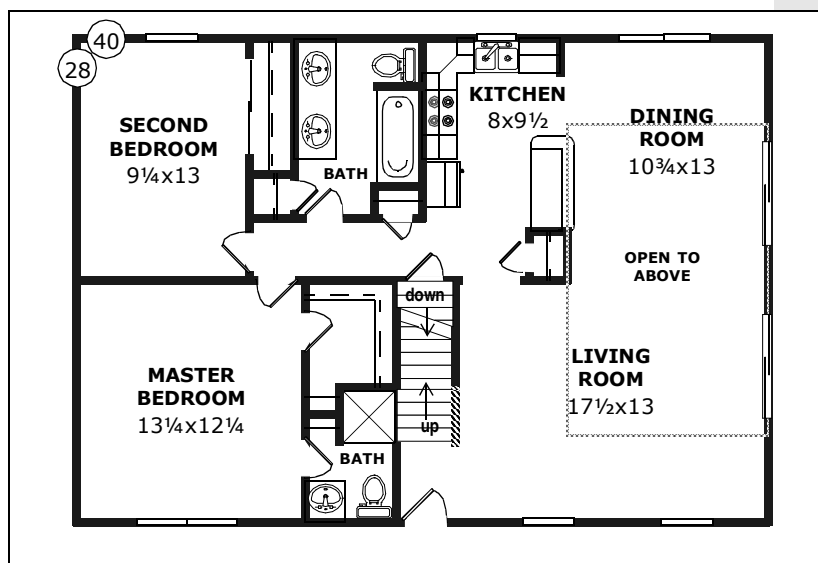
Size: 28x40 (1100 sqft)

Rooms: 5

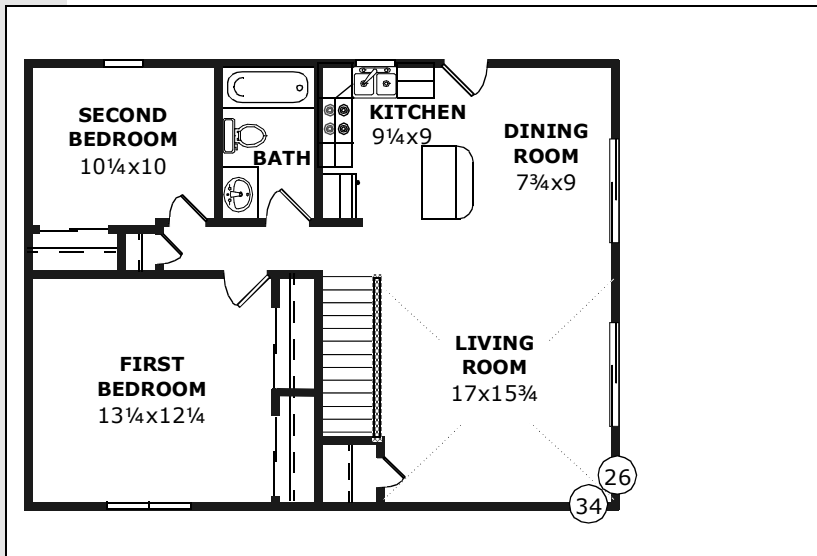
Bedrooms: 2

Baths: 1¾

Bonus Space: 448 sqft



CONTEMPORARY

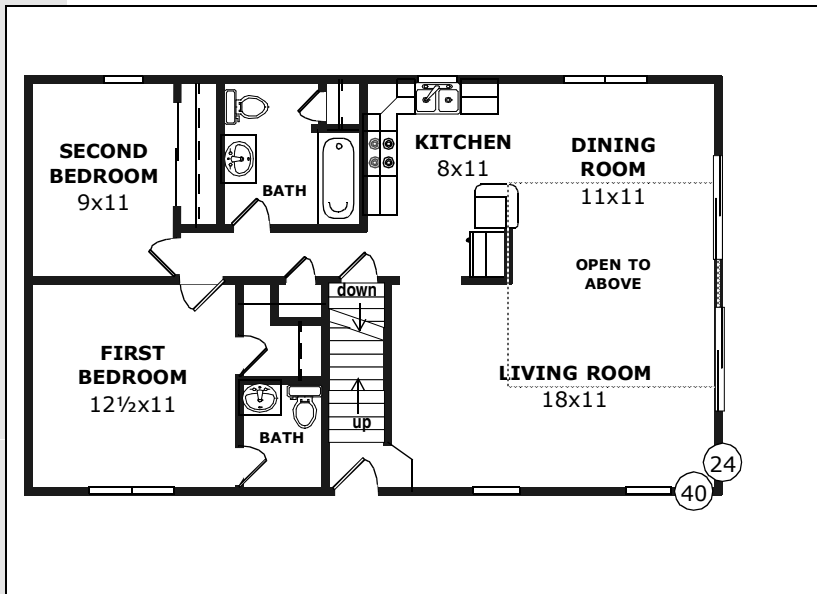


**THE DARLINGTON**

Cathedral ceilings and two nice bedrooms.

**D&G Contemporary Ranch**

Model Number: SV-402  
 Size: 26x34 (884 sqft)  
 Rooms: 5  
 Bedrooms: 2  
 Baths: 1

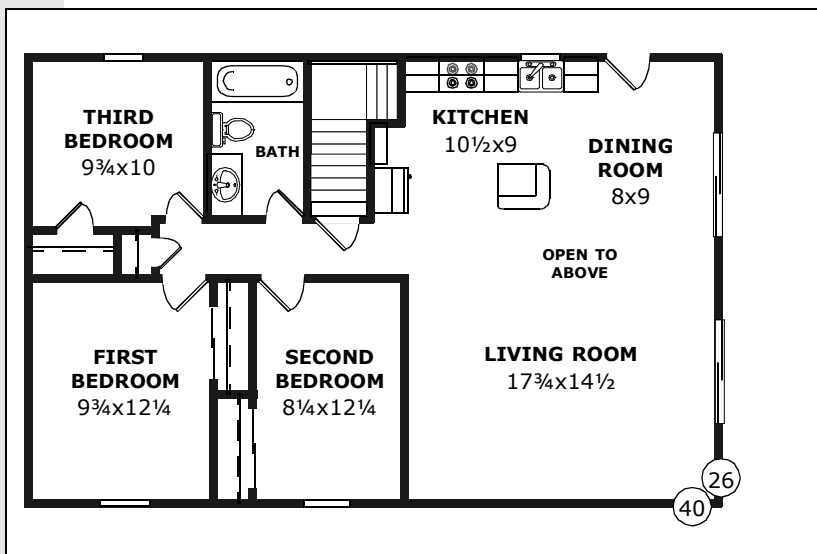


**THE ARMANDE**

Vaulted ceilings, two nice bedrooms and a private half-bath.

**D&G Contemporary Cape**

Model Number: SV-400  
 Size: 24x40 (947 sqft)  
 Rooms: 5  
 Bedrooms: 2  
 Baths: 1 1/2  
 Bonus Space: 350 sqft



**THE LONGVIEW**

A nice three-bedroom plan with cathedral ceilings in the daytime areas.

**D&G Contemporary Ranch**

Model Number: SV-403  
 Size: 26x40 (1040 sqft)  
 Rooms: 6  
 Bedrooms: 3  
 Baths: 1

## THE LYCOMING

A practical kitchen with an island adjoining the dining room plus three bedrooms.

### D&G Contemporary Ranch

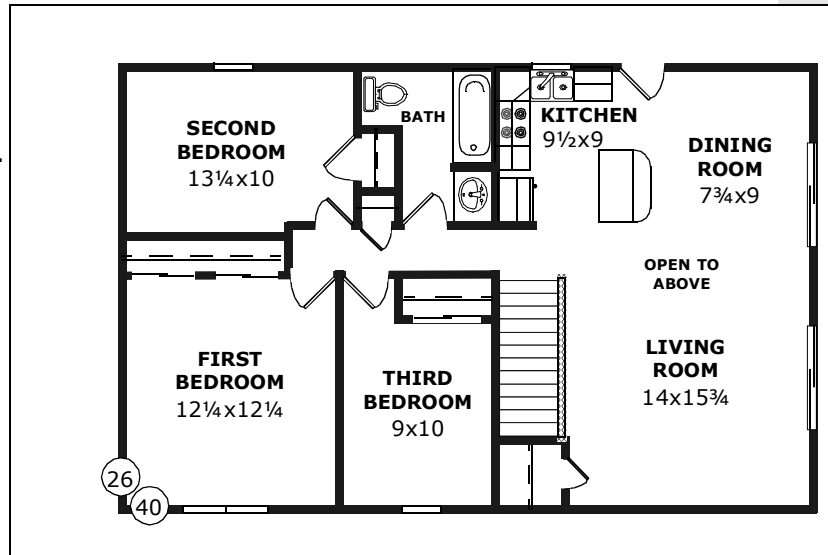
Model Number: SV-404

Size: 26x40 (1040 sqft)

Rooms: 6

Bedrooms: 3

Baths: 1



## THE CAMERON

Absolutely ideal for entertaining or for relaxing after a hard day.

### D&G Contemporary Cape

Model Number: SV-401

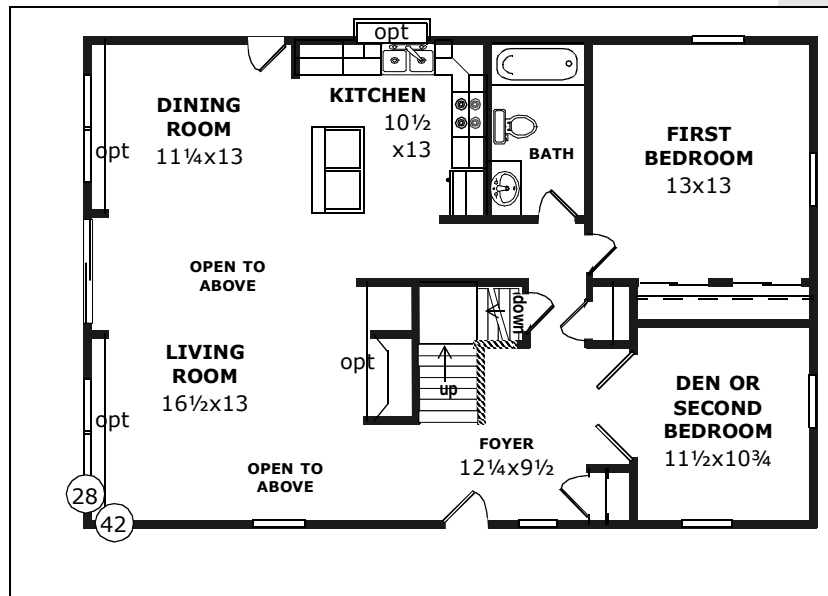
Size: 28x42 (1176 sqft)

Rooms: 5

Bedrooms: 2

Baths: 1

Bonus Space: 350 sqft



## THE WHITNEY

Spacious master suite and unique front-facing kitchen.

### D&G Contemporary Ranch

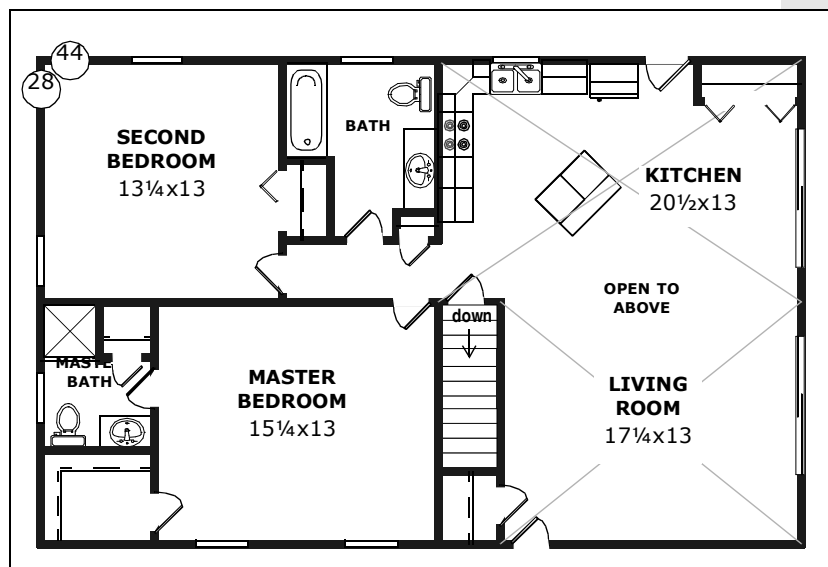
Model Number: SV-407

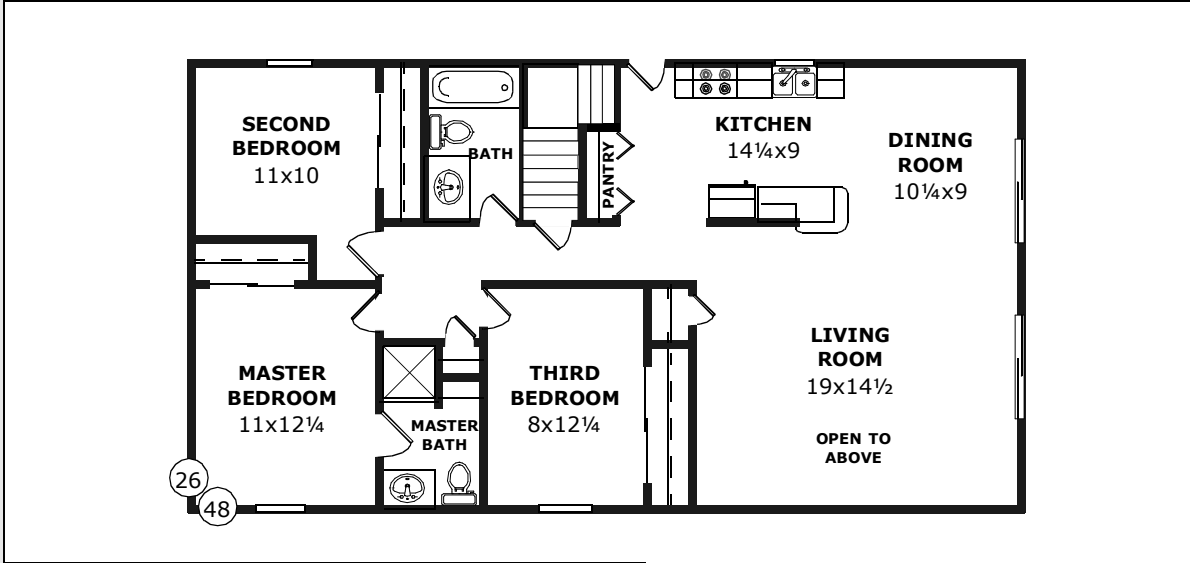
Size: 28x44 (1232 sqft)

Rooms: 4

Bedrooms: 2

Baths: 1 3/4





**THE SHENANGO**

A traditional home with spacious rooms throughout.

**D&G Contemporary Ranch**

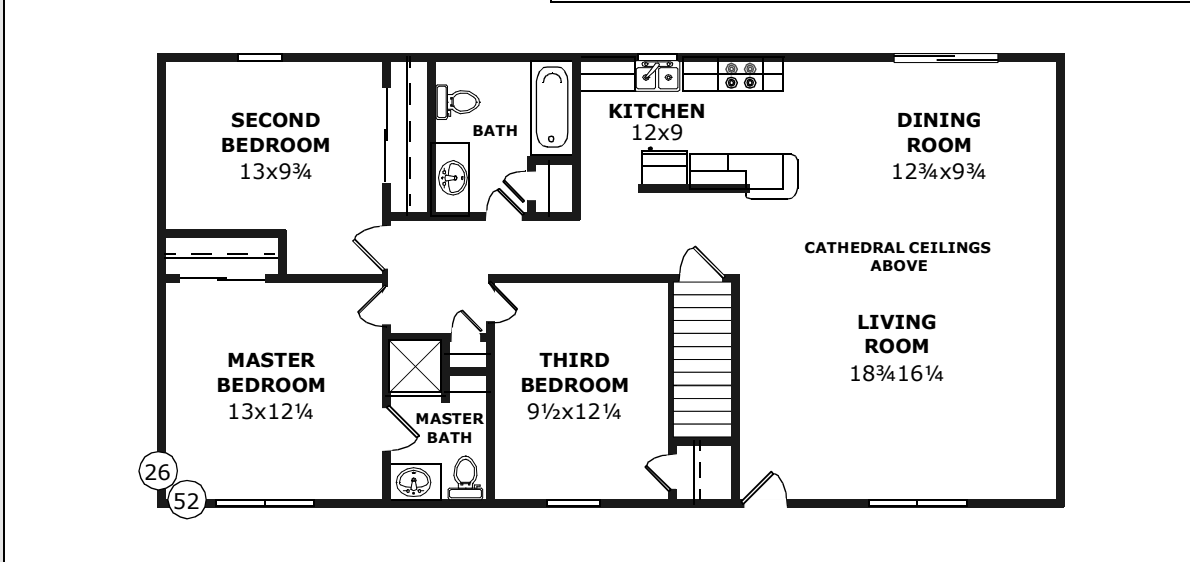
Model Number: SV-408  
 Size: 26x52 (1352 sqft)  
 Rooms: 6  
 Bedrooms: 3  
 Baths: 1 3/4

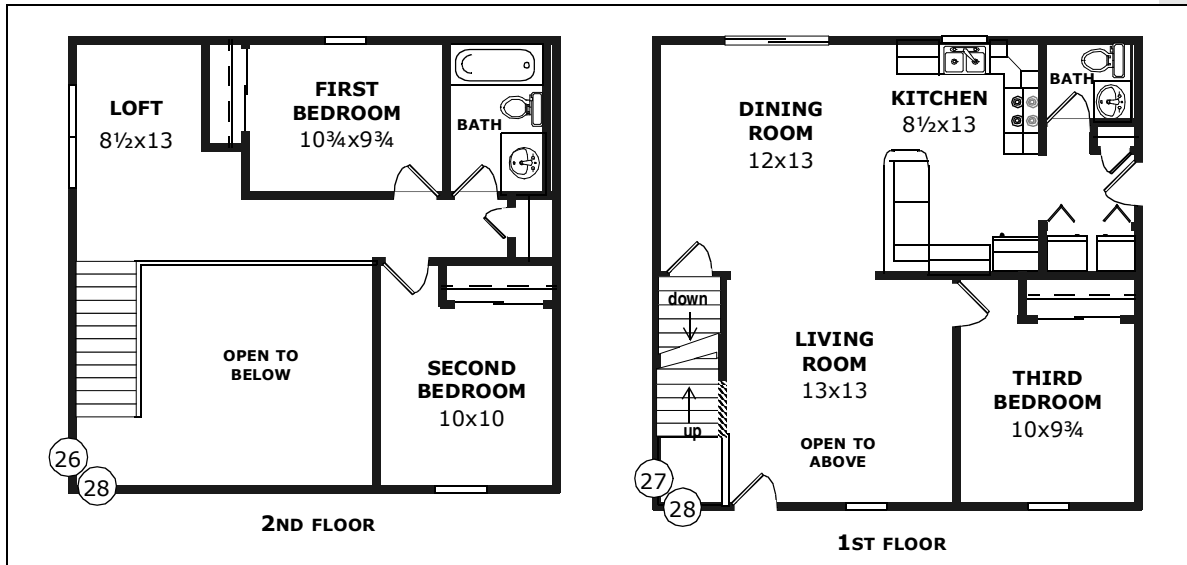
**THE SKYVIEW**

A kitchen with a pantry and a snackbar plus three nice bedrooms.

**D&G Contemporary Ranch**

Model Number: SV-406  
 Size: 26x48 (1248 sqft)  
 Rooms: 6  
 Bedrooms: 3  
 Baths: 1 3/4





### THE ASPEN

Two large bedrooms and bright daytime spaces.

#### D&G Contemporary Ranch

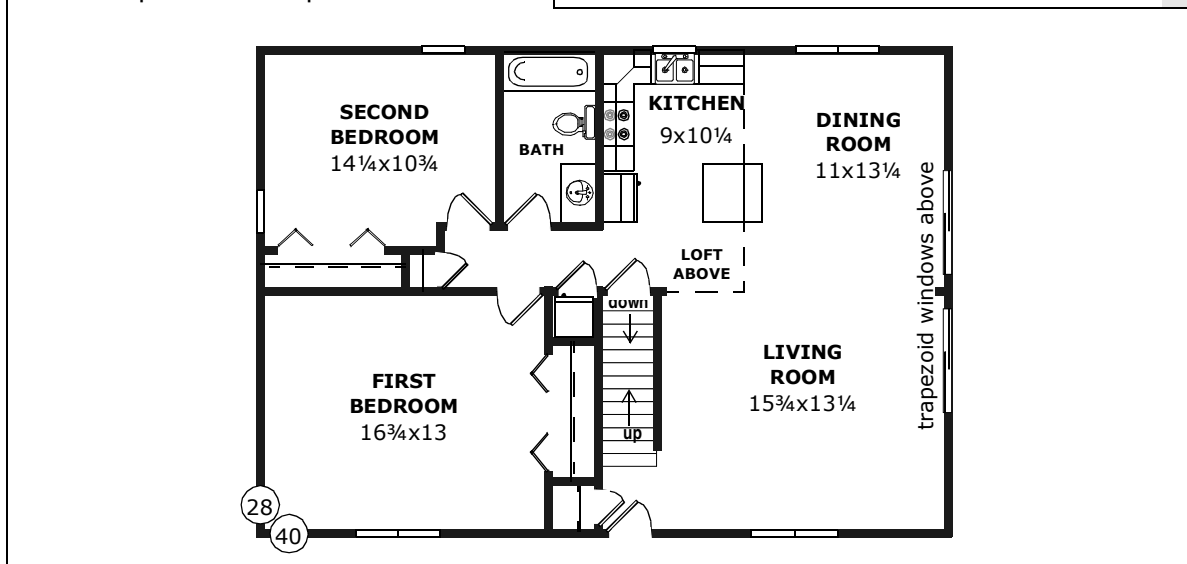
Model Number: SV-411  
 Size: 28x40 (1120 sqft)  
 Rooms: 5  
 Bedrooms: 2  
 Baths: 1  
 Bonus Space: 330 sqft

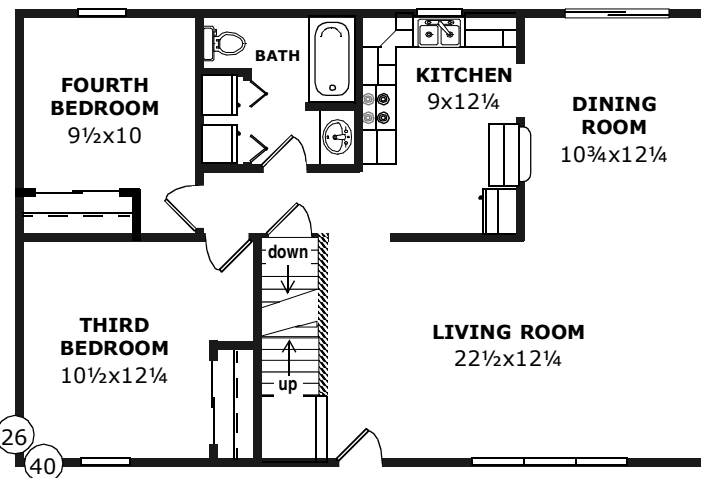
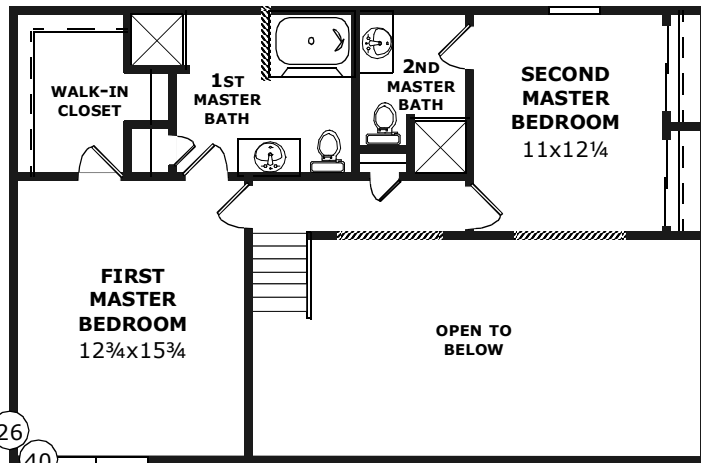
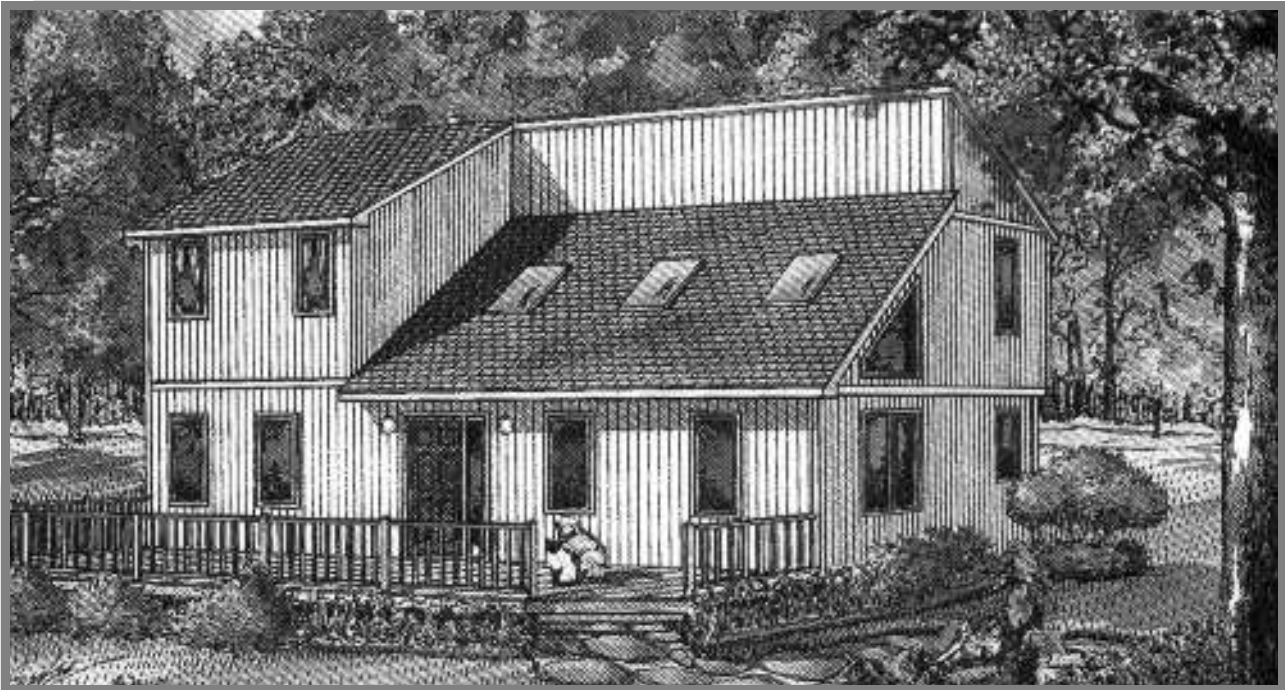
### THE PRINCETON

A lovely open two-story plan with three bedrooms.

#### D&G Contemporary

Model Number: SV-409  
 Size: 26x28 and 27x28 (1278 sqft)  
 Rooms: 6  
 Bedrooms: 3  
 Baths: 1½





## THE MARGATE

Fantastic daytime spaces plus four bedrooms including two master suites with a vaulted ceiling in the living room and sufficient facilities for four simultaneous baths.

 **D&G Contemporary**

Model Number: SV-405

Size: 26x40 (1745 sqft)

Rooms: 7

Bedrooms: 4

Baths: 2 3/4