



D&G CAPES

When you buy a **D&G** Cape, you get an excellent value because, although you purchase only two modules from the manufacturer, you end up with the "Bonus Space" of an unfinished 2nd floor. If you expect to finish the 2nd floor, you can order a full shed rear dormer. It significantly increases the 2nd floor living space while retaining the charming front view of a cape. To add elegance to that charming front view, order a pair of "Dog House" dormers. They are not expensive and they are so nice to look at. And, if you have other special requirements, remember we will find a way to meet your needs.

As a representative example of the many capes available from **D&G**, check the TEATICKET out below and, if the TEATICKET doesn't do it for you, browse through the other cape floor plans on the following pages.

If you want a cape, **D&G** has it.

THE TEATICKET

A five-room plan with a huge living room and a laundry.

D&G Cape

Model Number: SC-119

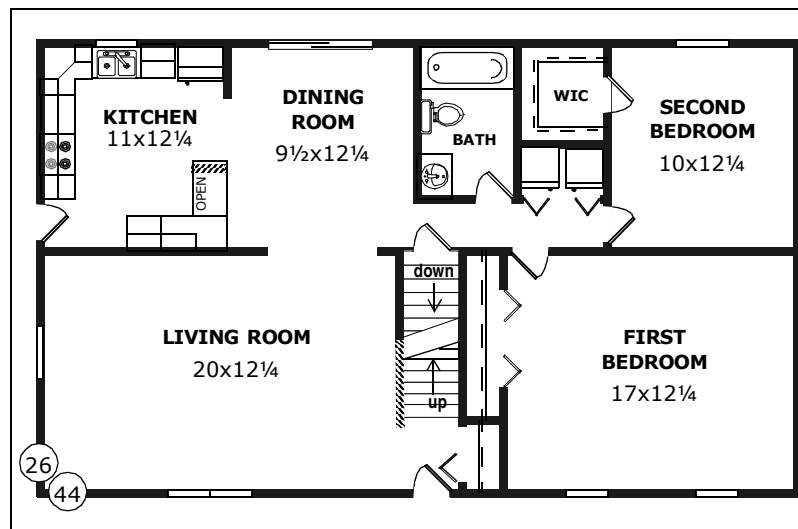
Size: 26x44 (1144 sqft)

Rooms: 5

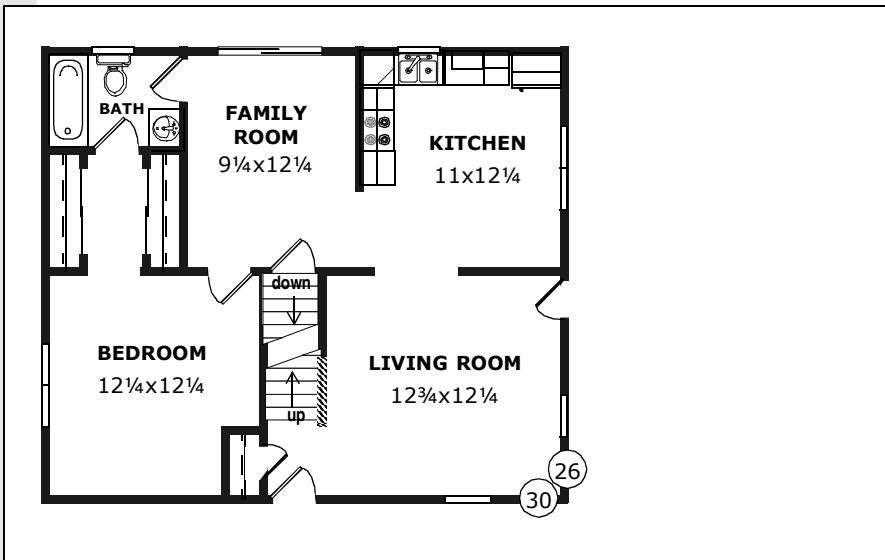
Bedrooms: 2

Baths: 1

Bonus Space: 704 sqft



CAPE

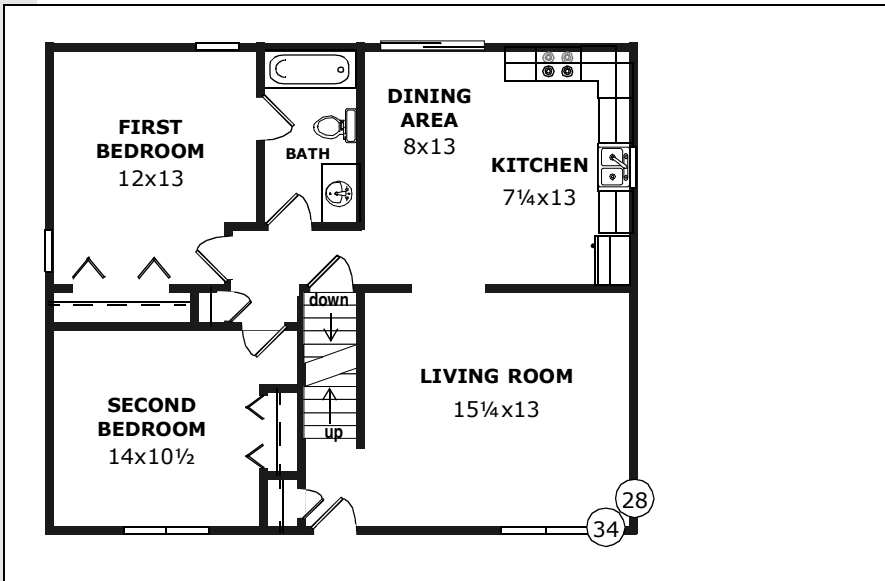


THE FALMOUTH

Sensible plan with both a living room and a family room.



Model Number: SC-212
 Size: 26x30 (780 sqft)
 Rooms: 4
 Bedrooms: 1
 Baths: 1
 Bonus Space: 480 sqft

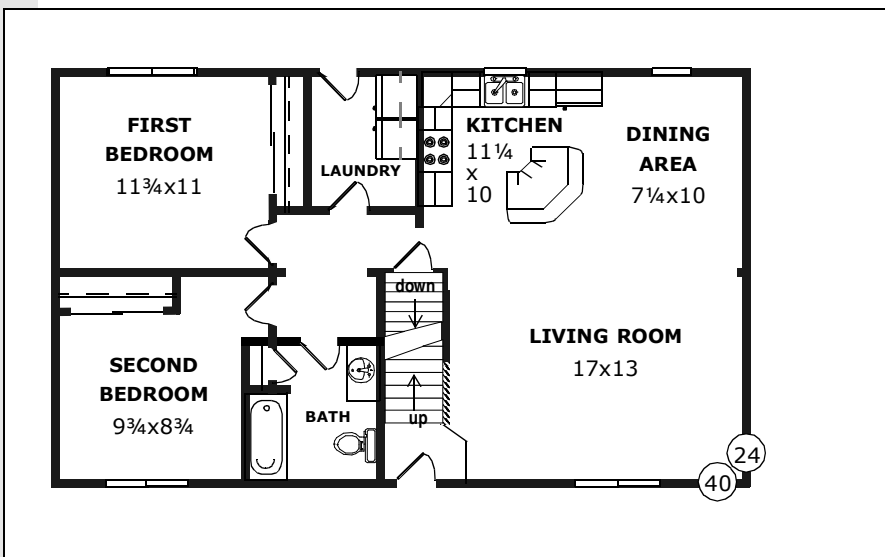


THE YARMOUTH

A logical plan for a young family.



Model Number: SC-214
 Size: 28x34 (952 sqft)
 Rooms: 4
 Bedrooms: 2
 Baths: 1
 Bonus Space: 612 sqft



THE BRISTOL

A quaint home with a spacious living room.



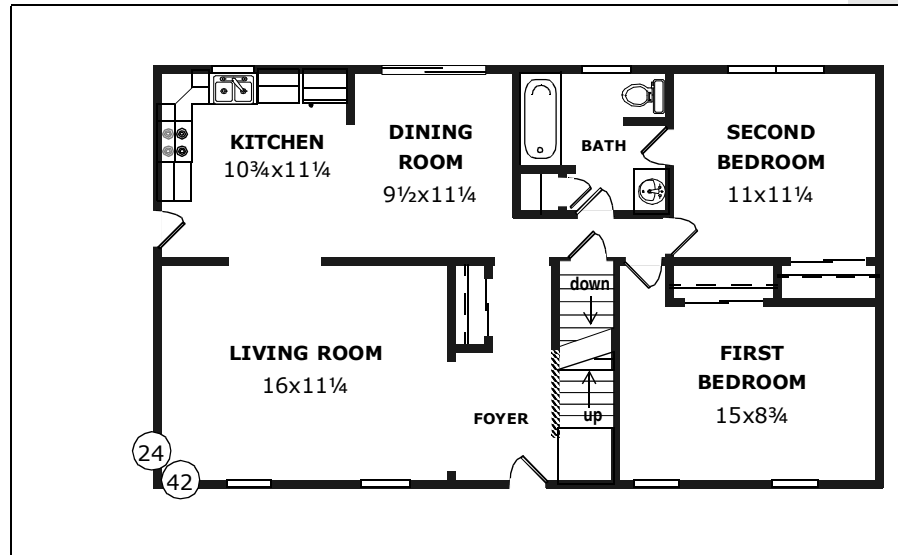
Model Number: SC-115
 Size: 24x40 (946 sqft)
 Rooms: 4
 Bedrooms: 2
 Baths: 1
 Bonus Space: 500 sqft

THE HARWICH

Good relationship of daytime rooms.



Model Number: SC-211
 Size: 24x42 (1008 sqft)
 Rooms: 5
 Bedrooms: 2
 Baths: 1
 Bonus Space: 588 sqft

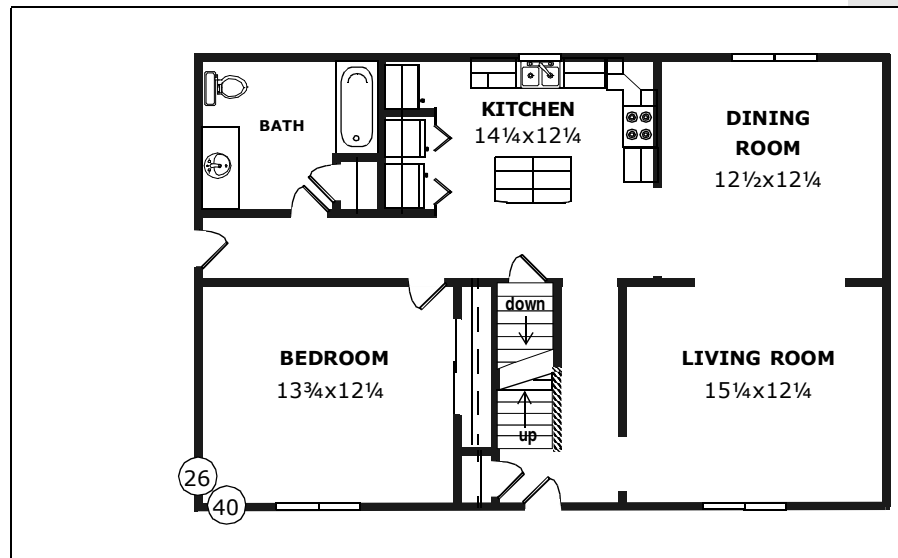


THE CAPE MAY

Lovely kitchen with first-floor laundry.



Model Number: SC-117
 Size: 26x40 (1040 sqft)
 Rooms: 4
 Bedrooms: 1
 Baths: 1
 Bonus Space: 580

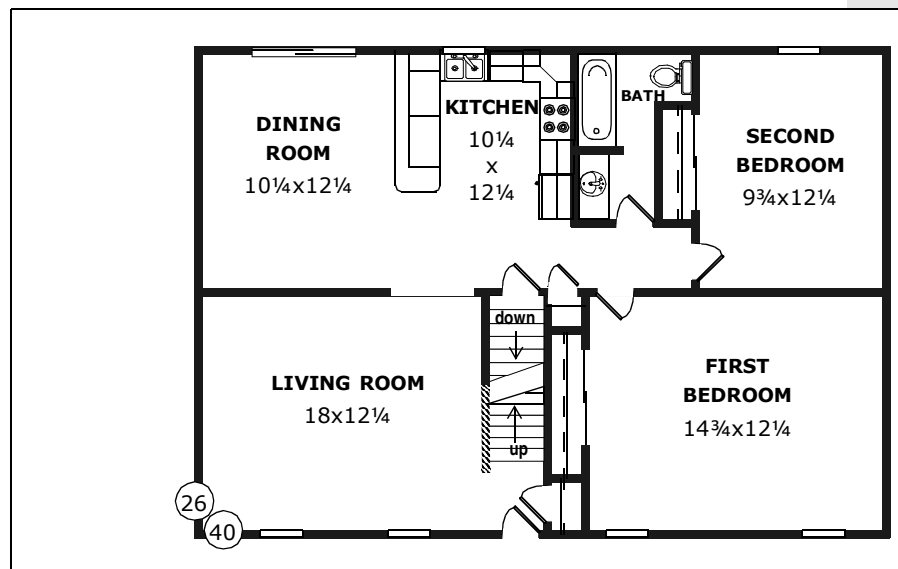


THE CHATHAM

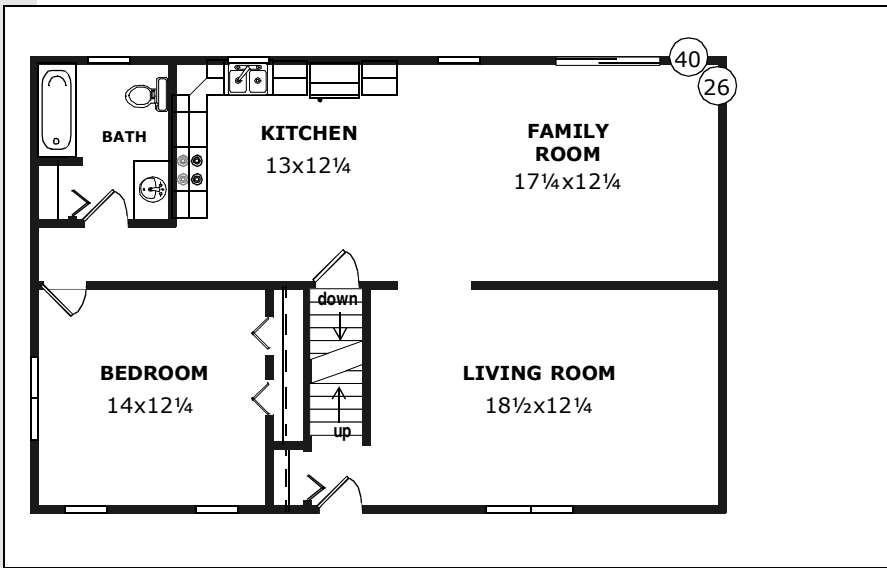
Large living room; good kitchen/dining room layout.



Model Number: SC-118
 Size: 26x40 (1040 sqft)
 Rooms: 5
 Bedrooms: 2
 Baths: 1
 Bonus Space: 580



CAPE



THE HYANNIS

Open spaces for casual living and a formal living room.

D&G Cape

Model Number: SC-213

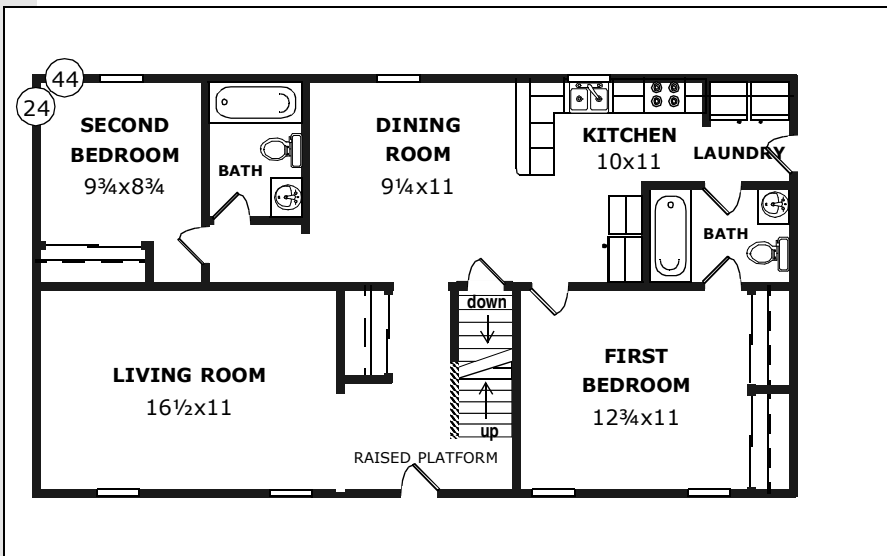
Size: 26x40 (1040 sqft)

Rooms: 4

Bedrooms: 1

Baths: 1

Bonus Space: 640 sqft



THE ORLEANS

Separated bedrooms and two full baths.

D&G Cape

Model Number: SC-116

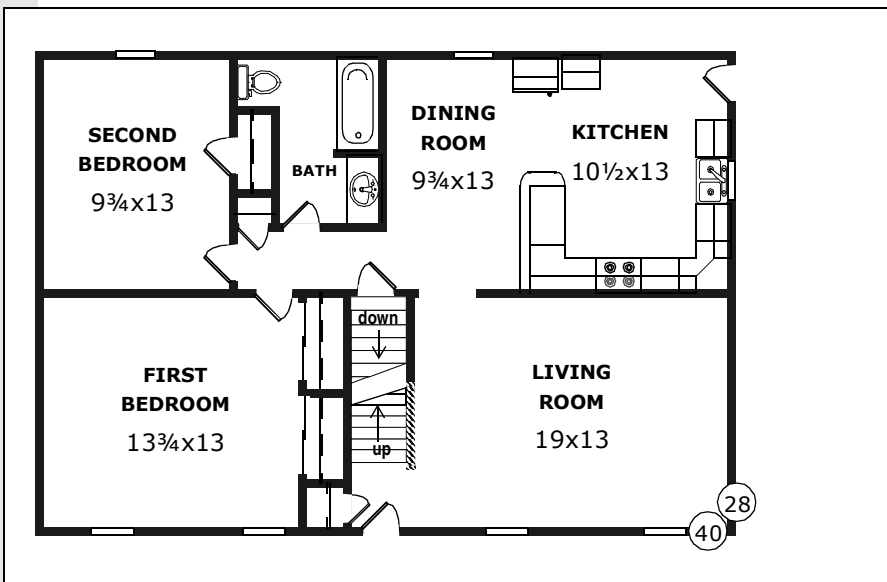
Size: 24x44 (1041 sqft)

Rooms: 5

Bedrooms: 2

Baths: 2

Bonus Space: 550 sqft



THE HALIFAX

Cozy kitchen/dining area; good closet space.

D&G Cape

Model Number: SC-121

Size: 28x40 (1100 sqft)

Rooms: 5

Bedrooms: 2

Baths: 1

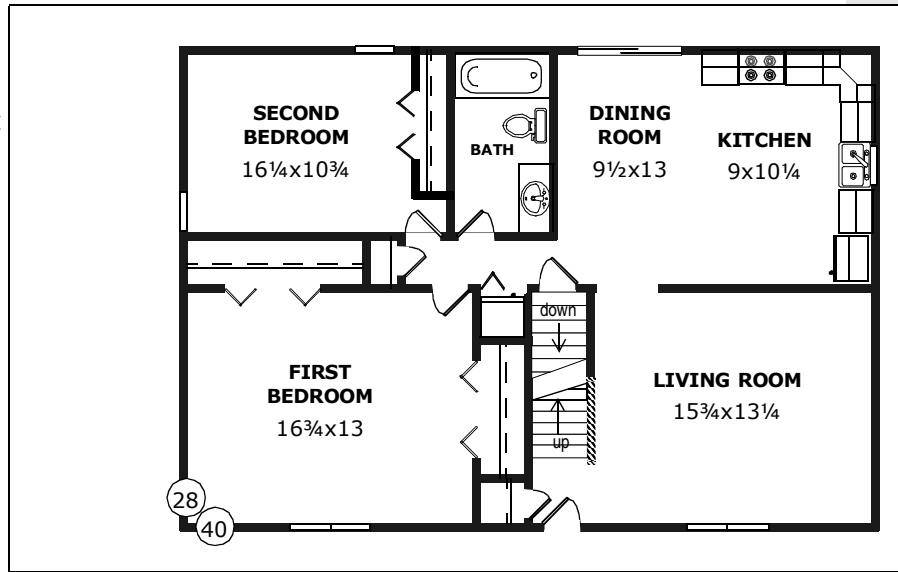
Bonus Space: 640 sqft

THE HATTERAS

A logical plan like SC-121 but with a bit more closet space.



Model Number: SC-122
 Size: 28x40 (1100 sqft)
 Rooms: 5
 Bedrooms: 2
 Baths: 1
 Bonus Space: 700 sqft

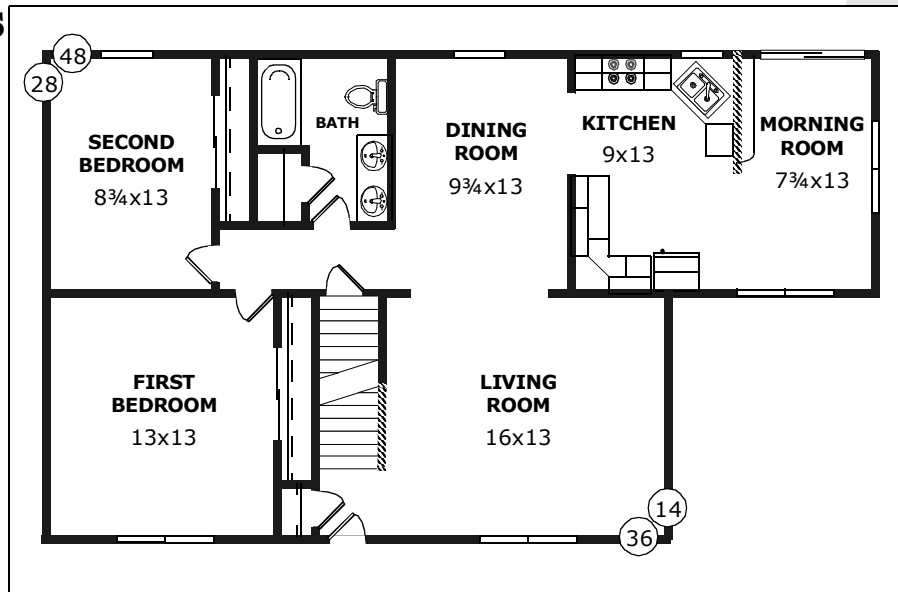


THE OAK BLUFFS

Sensational morning room with glass on three walls.



Model Number: SC-127
 Size: 28x48/36 (1105 sqft)
 Rooms: 6
 Bedrooms: 2
 Baths: 1
 Bonus Space: 651 sqft

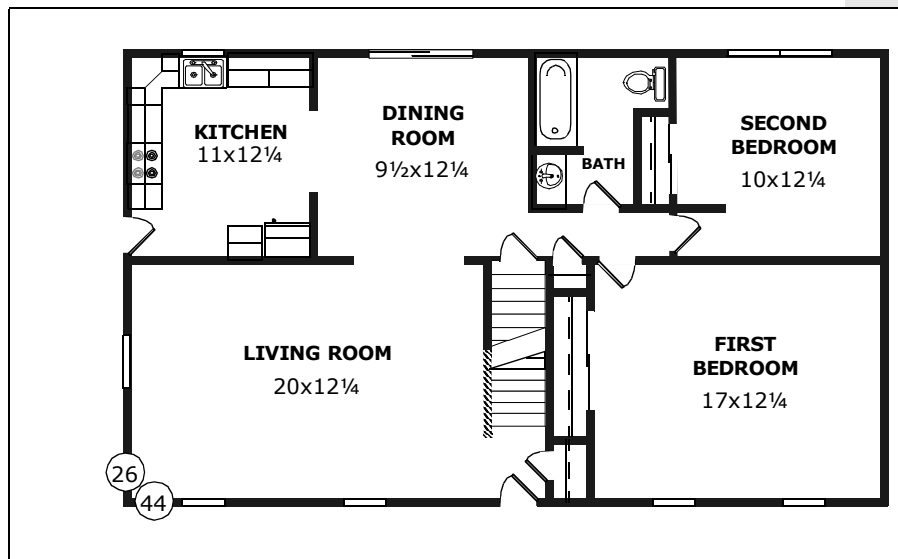


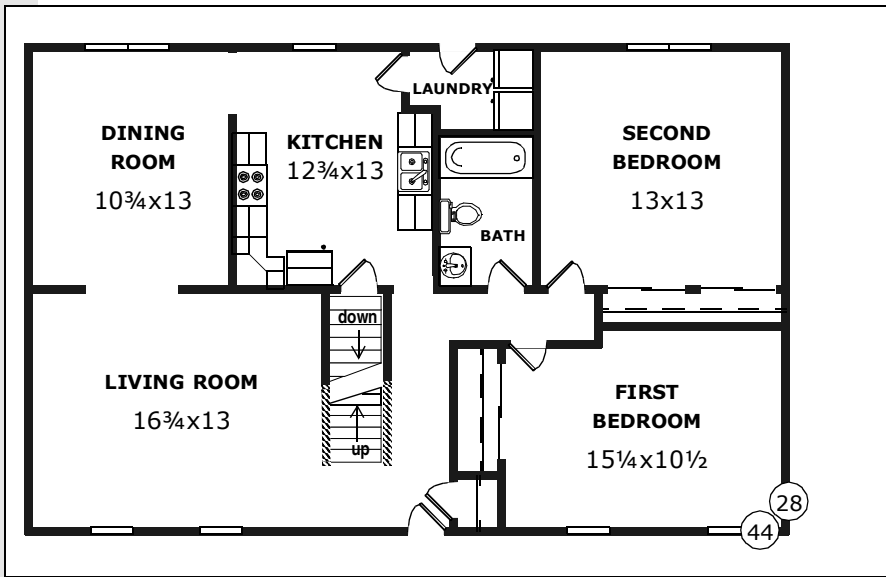
THE HESTER

A five-room plan with a huge living room and a laundry.



Model Number: SC-319
 Size: 26x44 (1144 sqft)
 Rooms: 5
 Bedrooms: 2
 Baths: 1
 Bonus Space: 638 sqft





THE EVERLY

Big kitchen with laundry with a formal dining room.

D&G Cape

Model Number: SC-322

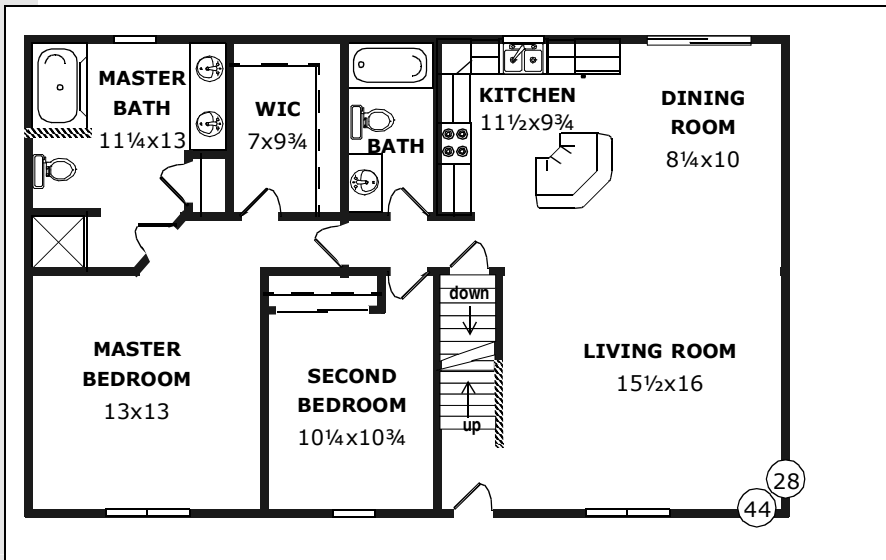
Size: 28x44 (1210 sqft)

Rooms: 5

Bedrooms: 2

Baths: 1

Bonus Space: 704 sqft



THE GULFPORT

Magnificent master suite and open daytime spaces.

D&G Cape

Model Number: SC-123

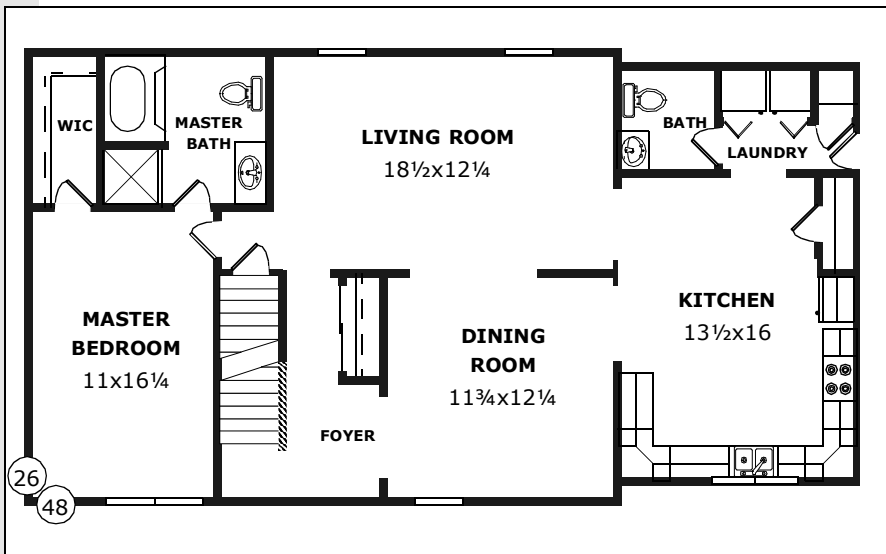
Size: 28x44 (1210 sqft)

Rooms: 5

Bedrooms: 2

Baths: 2

Bonus Space: 704 sqft



THE EASTBORNE

Spacious kitchen and a huge master suite.

D&G Cape

Model Number: SC-120

Size: 26x48 (1214 sqft)

Rooms: 4

Bedrooms: 1

Baths: 1 1/2

Bonus Space: 696 sqft

THE NEWPORT

Plenty of elbow room throughout.



Model Number: SC-126

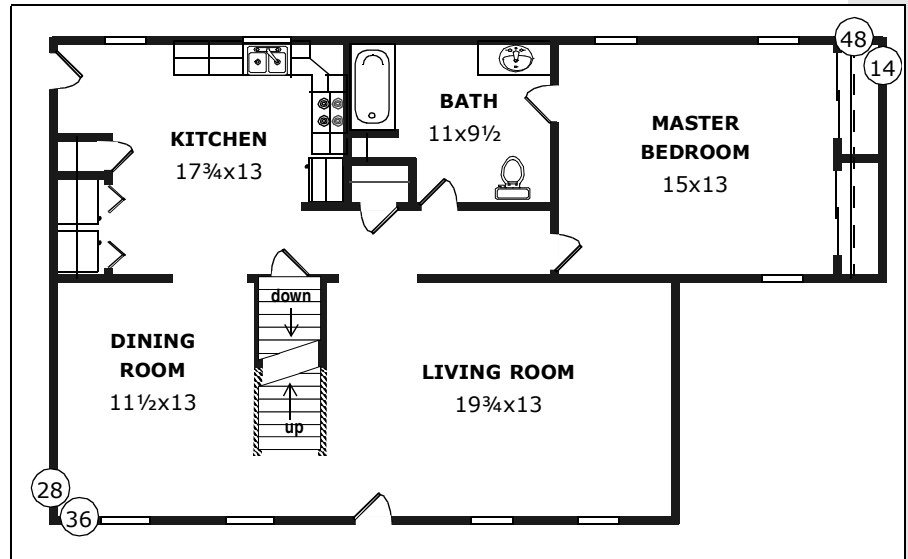
Size: 28x48/36
(1105 sqft)

Rooms: 4

Bedrooms: 1

Baths: 1

Bonus Space: 651 sqft



THE OSTERVILLE

A formal dining room, a morning room and a large living room.



Model Number: SC-125

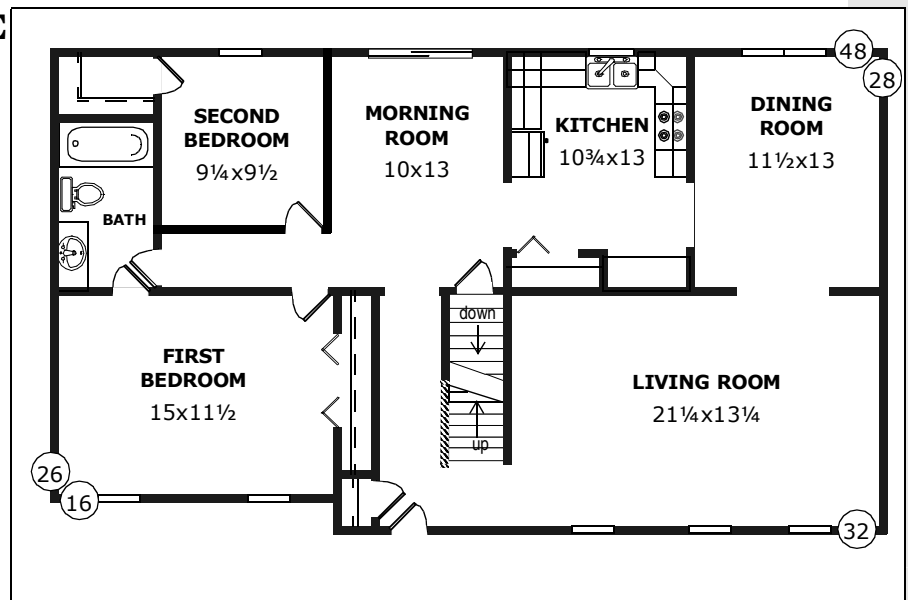
Size: 28/26x48
(1296 sqft)

Rooms: 6

Bedrooms: 2

Baths: 1

Bonus Space: 840 sqft



THE NANTUCKET

Wonderful food preparation and eating spaces.



Model Number: SC-124

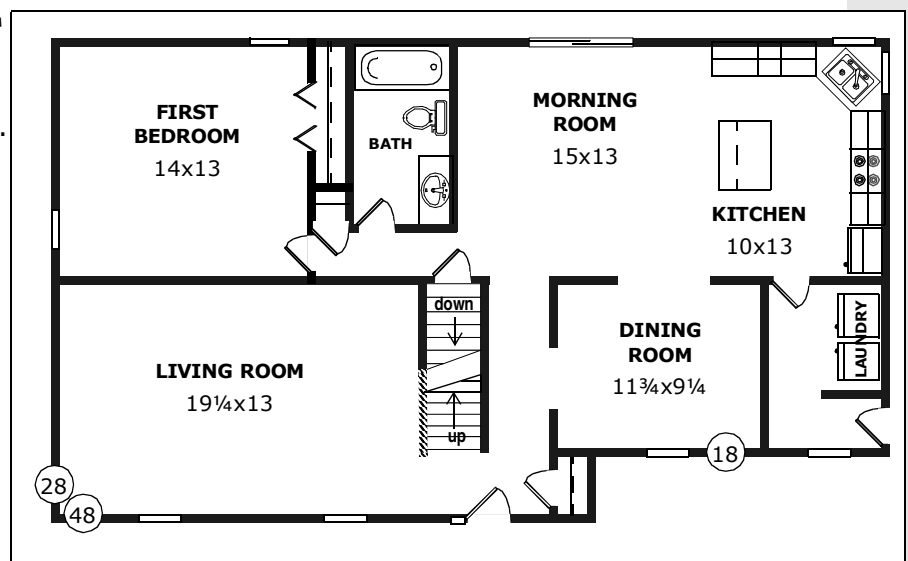
Size: 28/24x48
(1260 sqft)

Rooms: 5

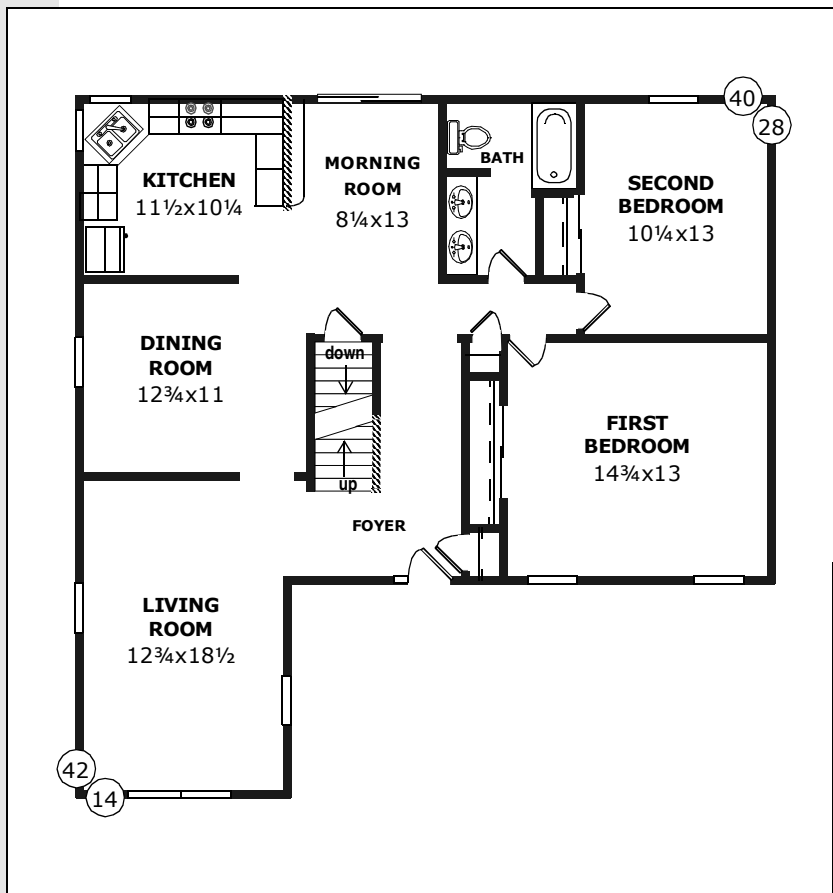
Bedrooms: 1

Baths: 1

Bonus Space: 840 sqft



CAPE



THE TISBURY

Marvelous living room with glass on three walls.



Model Number: SC-129

Size: 42/28x40
(1306 sqft)

Rooms: 6

Bedrooms: 2

Baths: 1

Bonus Space: 620 sqft

THE PRESTON

An elegant and spacious two-bedroom plan.

Model Number: SC-128

Size: 28x60 (1576 sqft)

Rooms: 6

Bedrooms: 2

Baths: 1 1/2

Bonus Space: 930 sqft

