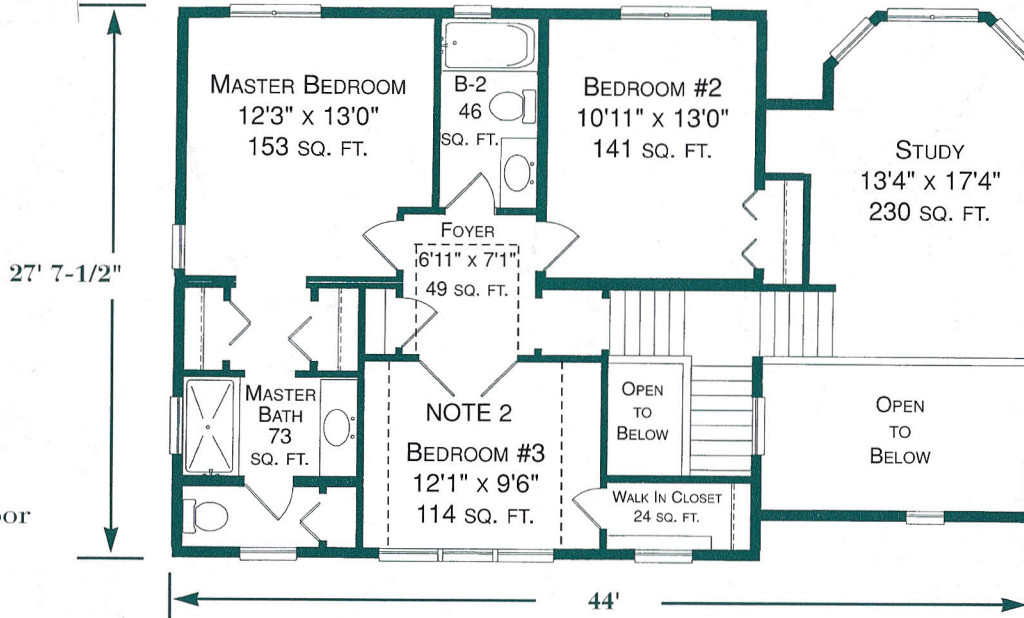


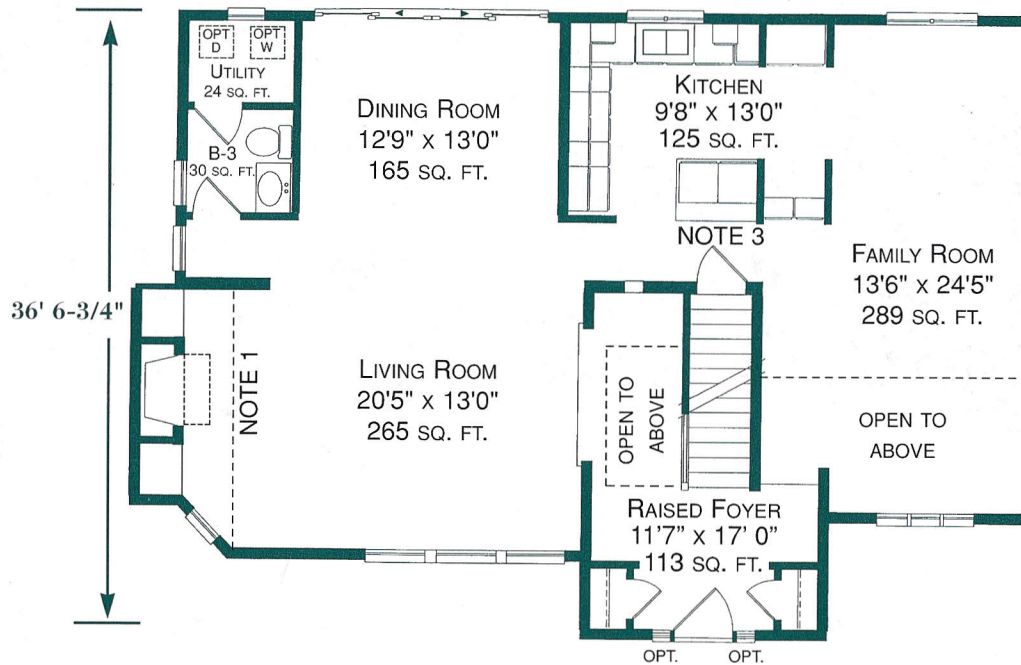
Approximately 2400 sq. ft. of space. Drawings are for illustration only and may vary in precise detail from plans and specifications.

TWO STORY H-351

Second Floor



First Floor



NOTES

1. RAISED FLOOR, FIREPLACE, CABINETS AND BOOKSHELVES ARE OPTIONAL
2. RAISED CEILINGS IN UPPER HALL AND BEDROOM #3 ARE OPTIONAL AND FINISHED BY BUILDER ON SITE.
3. OPTIONAL 12" COUNTERTOP OVERHANG SHOWN.

CHelsea
MODULAR
HOMES

