

FRANKLIN - 507



24'-9"

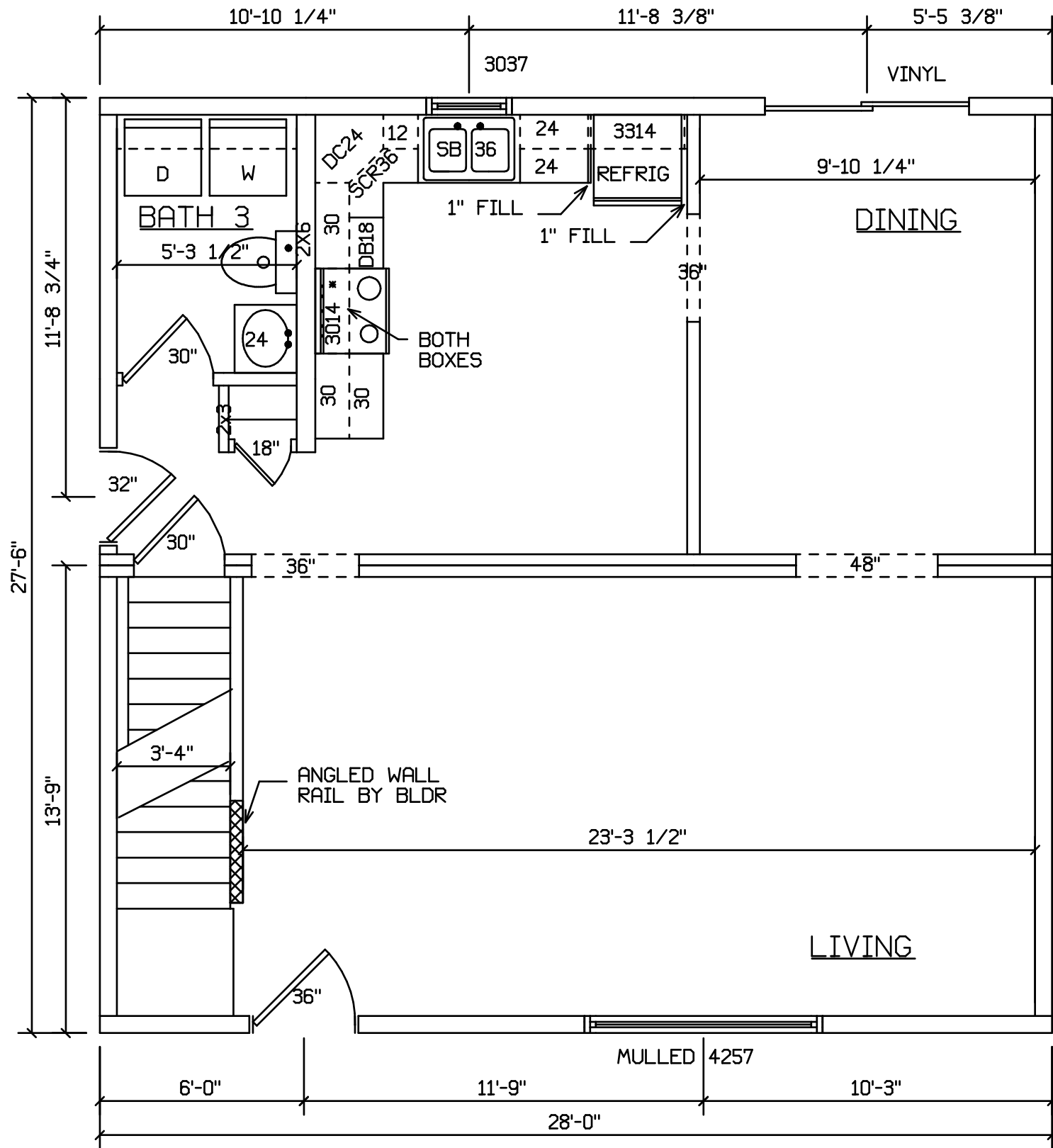
FRONT

SITE LOCATION

 HOLD BACK GYPBD 1'-0" PER SIDE IN OPEN AREAS

STAIRS DESIGNED TO 8 1/4" RISE MAX., AND 9" TREAD MIN W/ 1 1/8" NOSING

BLDR/DEVEL. AUTHORIZATION	DATE	# LABEL LOCATION CLG HGTH	<i>Linda A. Litz</i> LINDA A. LITZ PRODUCTION ENGINEER	SUPERIOR BUILDERS 1565 PA. RT. 442 E. MUNCY, PA. 17756 A DIVISION OF MUNCY HOMES, INC.	REV.
MANUF. AUTHORIZATION	DATE	PLANS HAVE BEEN EXTRACTED FROM APPROVED BLDG SYSTEM DOCUMENTATION		BUILDER/CUSTOMER	DATABASE
		DWN BY LITZ	DATE 2-12-00	SCALE 1/4"=1'-0"	507a
				FRANKLIN 28X28 2 STORY	

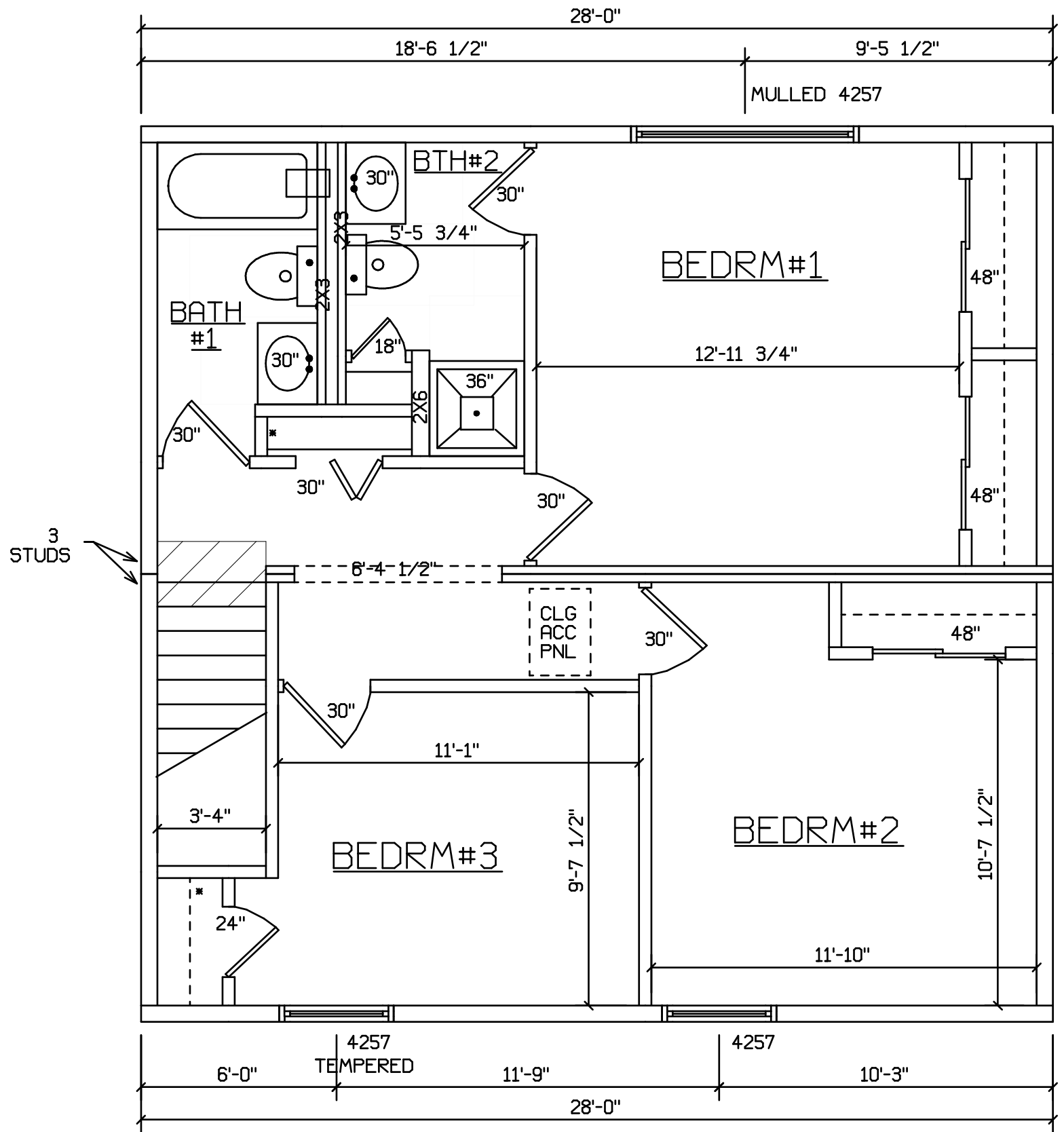


SITE LOCATION

HOLD BACK GYPBD 1'-0" PER SIDE IN OPEN AREAS

STAIRS DESIGNED TO 8 1/4" RISE MAX., AND 9" TREAD MIN W/ 1 1/8" NOSING

BLDR/DEVEL. AUTHORIZATION	DATE	#LABEL LOCATION	<i>Gregory J. Hayes</i> Production Engineer	SUPERIOR BUILDERS 1565 PA. RT. 442 E. MUNCY, PA. 17756 A DIVISION OF MUNCY HOMES, INC.	REV.
MANUF. AUTHORIZATION	DATE	PLANS HAVE BEEN EXTRACTED FROM APPROVED BLDG SYSTEM DOCUMENTATION	BUILDER/CUSTOMER		DATABASE
		DWN BY LITZ	DATE 2-12-00	SCALE 1/4"=1'-0"	507a
				FRANKLIN 28X28 2 STORY	



SITE LOCATION

HOLD BACK GYPBD 1'-0" PER SIDE IN OPEN AREAS

STAIRS DESIGNED TO 8 1/4" RISE MAX., AND 9" TREAD MIN W/ 1 1/8" NOSING

BLDR/DEVEL. AUTHORIZATION	DATE	# LABEL LOCATION	<i>Linda A. Litz</i> LINDA A. LITZ PRODUCTION ENGINEER	SUPERIOR BUILDERS 1565 PA. RT. 442 E. MUNCY, PA. 17756 A DIVISION OF MUNCY HOMES, INC.	REV.
MANUF. AUTHORIZATION	DATE	PLANS HAVE BEEN EXTRACTED FROM APPROVED BLDG SYSTEM DOCUMENTATION	BUILDER/CUSTOMER	FRANKLIN 28X28 2 STORY	DATABASE
		DWN BY LITZ	DATE 2-12-00	SCALE 1/4"=1'-0"	507a