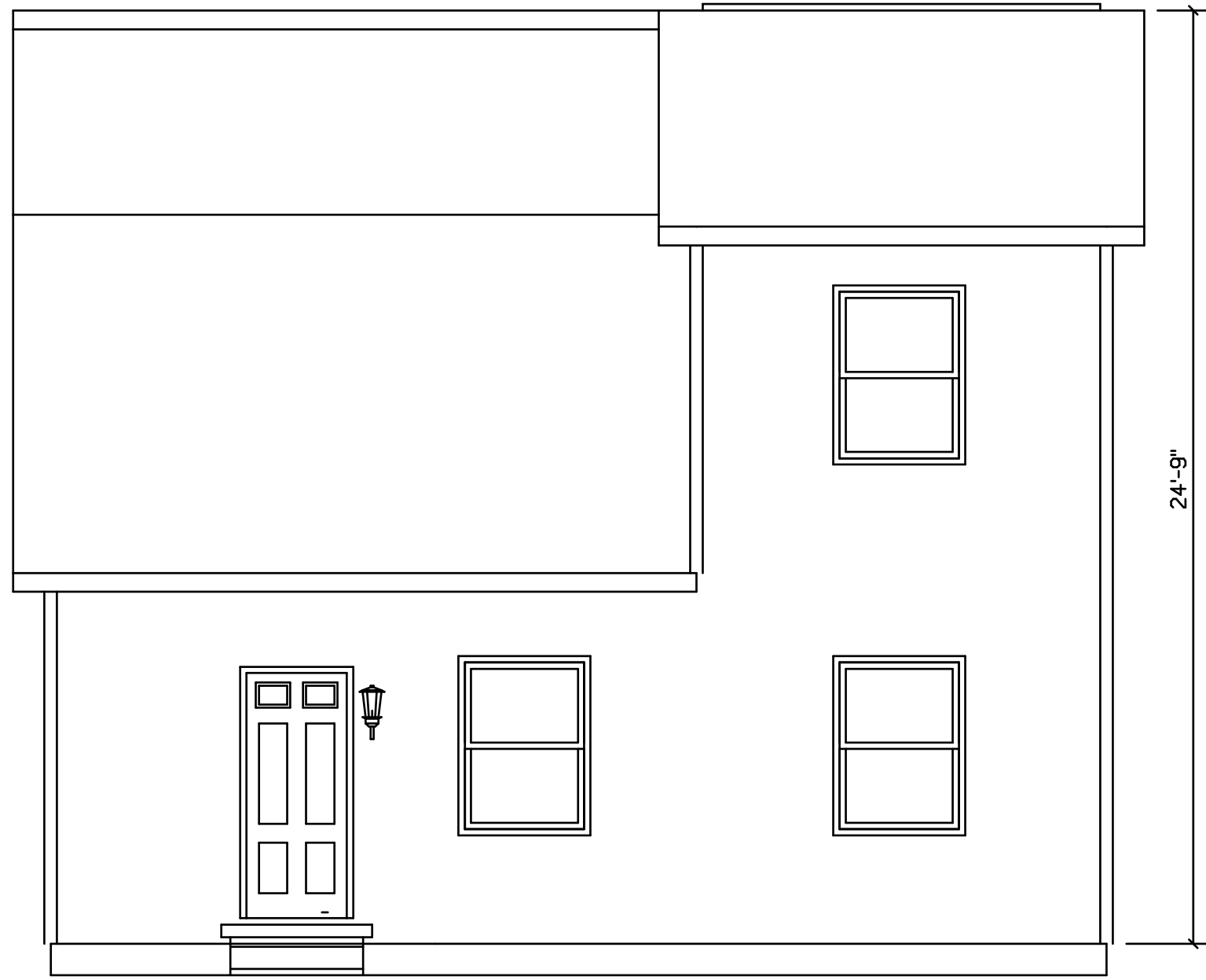
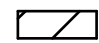


BENTON #502

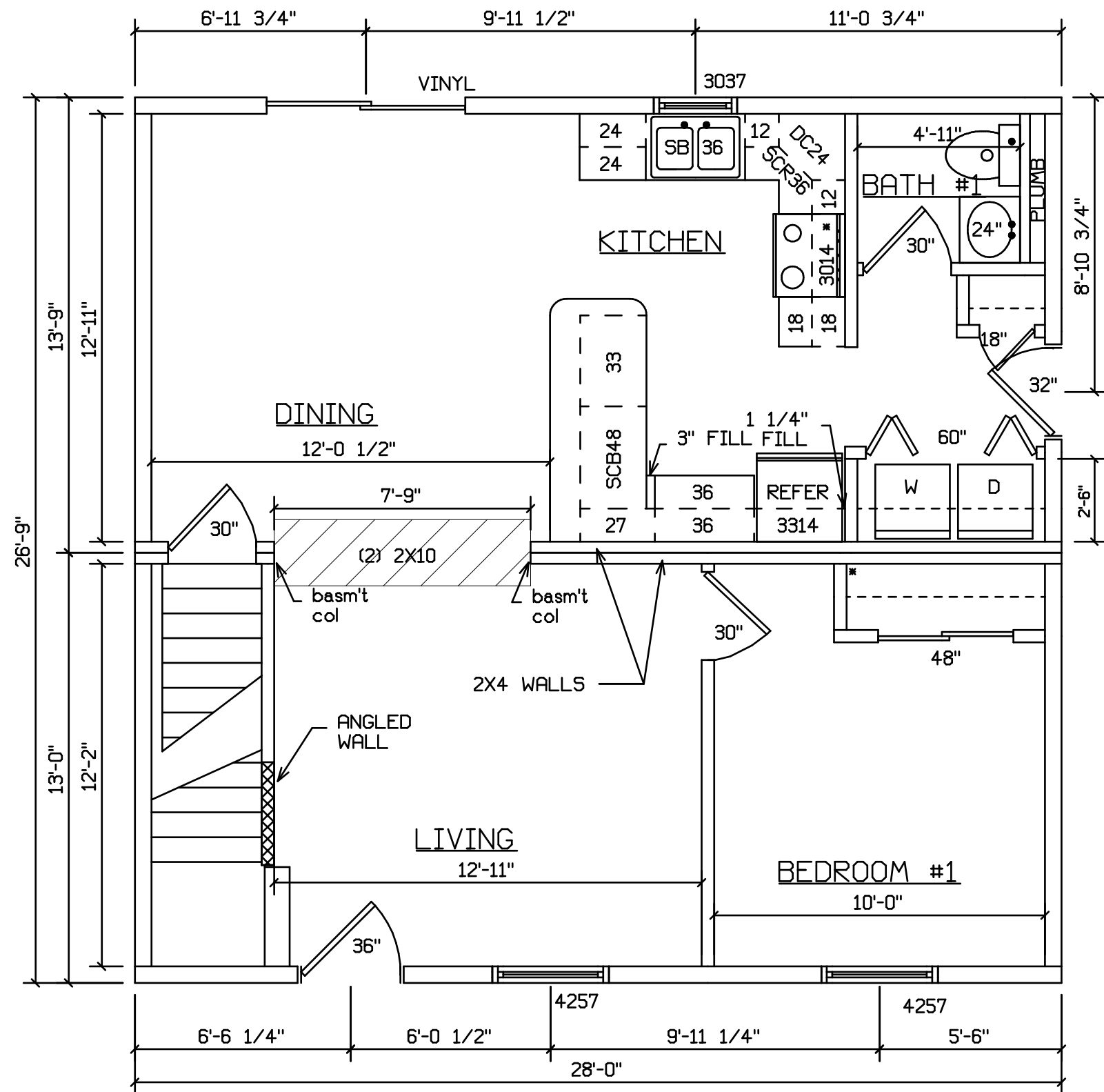


SITE LOCATION

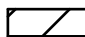
 HOLD BACK GYPBD 1'-0" PER SIDE IN OPEN AREAS

STAIRS DESIGNED TO 8 1/4" RISE MAX., AND 9" TREAD MIN W/ 1 1/8" NOSING

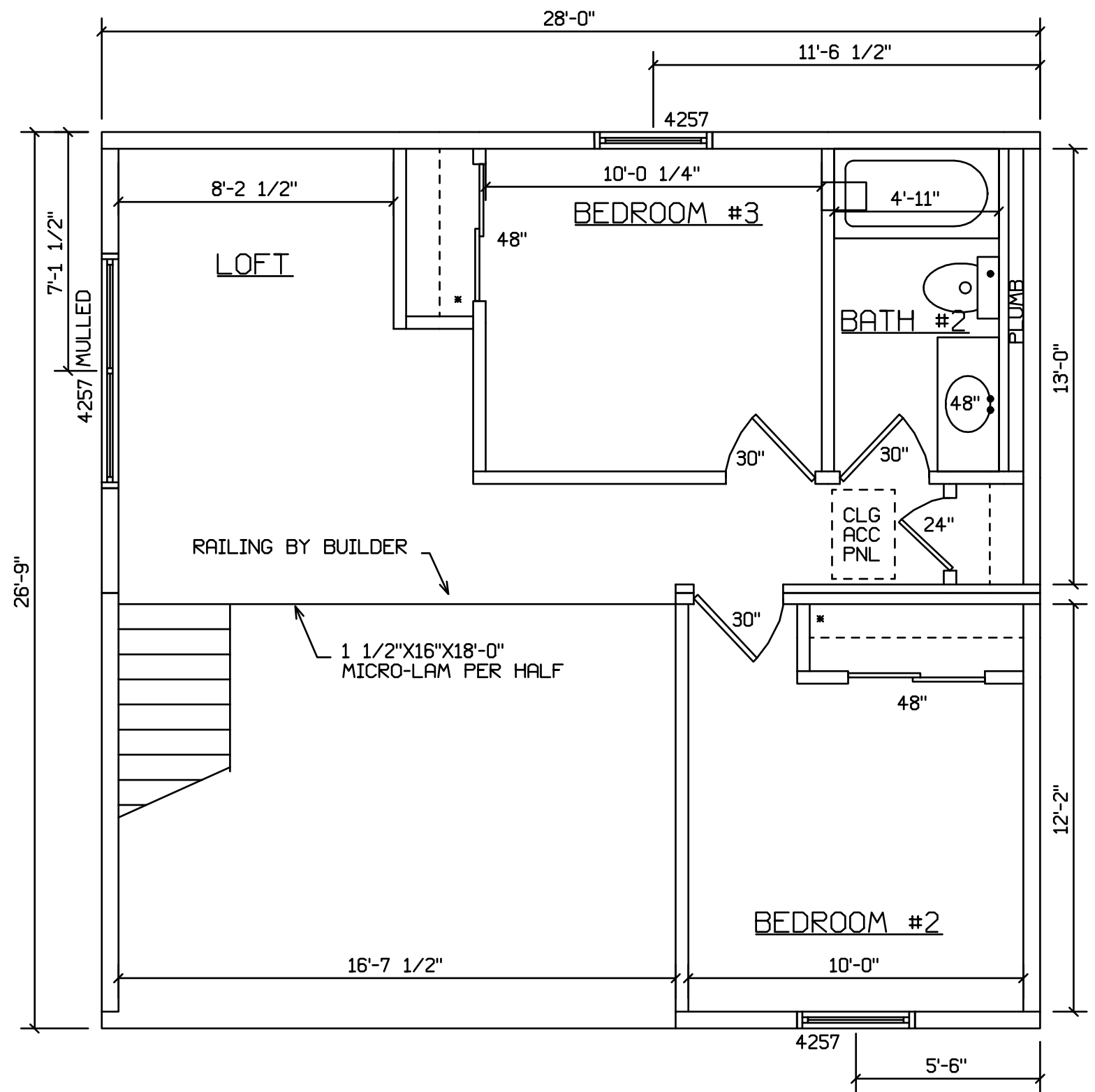
| | | | | | |
|---------------------------|------|------------------|--|--|----------|
| BLDG/DEVEL. AUTHORIZATION | DATE | # LABEL LOCATION | <i>Gregory J. Hoyer</i> Production Engineer | SUPERIOR BUILDERS 1565 PA. RT. 442 E. MUNCY, PA. 17756 A DIVISION OF MUNCY HOMES, INC. | REV. |
| MANUF. AUTHORIZATION | DATE | CLG HGTH | PLANS HAVE BEEN EXTRACTED FROM APPROVED BLD'G SYSTEM DOCUMENTATION | | DATABASE |
| | | DWN BY | DATE | SCALE | |
| | | LOWE | 2-16-01 | 1/4"=1'-0" | |
| | | | | FRONT | 502A |



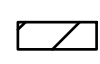
SITE LOCATION

 HOLD BACK GYPBD 1'-0" PER SIDE IN OPEN AREAS
 STAIRS DESIGNED TO 8 1/4" RISE MAX., AND 9" TREAD MIN W/ 1 1/8" NOSING

| | | | | | |
|---------------------------|------|------------------|--|--|----------|
| BLDR/DEVEL. AUTHORIZATION | DATE | # LABEL LOCATION | <i>Gregory J. Hayee</i> Production Engineer | SUPERIOR BUILDERS 1565 PA. RT. 442 E. MUNCY, PA. 17756 A DIVISION OF MUNCY HOMES, INC. | REV. |
| MANUF. AUTHORIZATION | DATE | CLG HGTH | PLANS HAVE BEEN EXTRACTED FROM APPROVED BLDG SYSTEM DOCUMENTATION DWN BY LOWE DATE 2-16-01 SCALE 1/4"=1'-0" | | DATABASE |
| | | | | 27X28 CONTEMPORARY BENTON | 502A |
| | | | | 1ST FLOOR PLAN | |



SITE LOCATION

 HOLD BACK GYPBD 1'-0" PER SIDE IN OPEN AREAS
 STAIRS DESIGNED TO 8 1/4" RISE MAX., AND 9" TREAD MIN W/ 1 1/8" NOSING

| | | | | | |
|---------------------------|------|------------------|---|--|----------|
| BLDR/DEVEL. AUTHORIZATION | DATE | # LABEL LOCATION | <i>Gregory J. Hoyer</i> Production Engineer | SUPERIOR BUILDERS 1565 PA. RT. 442 E. MUNCY, PA. 17756 A DIVISION OF MUNCY HOMES, INC. | REV. |
| MANUF. AUTHORIZATION | DATE | CLG HGTH | PLANS HAVE BEEN EXTRACTED FROM APPROVED BLD'G SYSTEM DOCUMENTATION DWN BY LOWE DATE 2-16-01 SCALE 1/4"=1'-0" | | DATABASE |
| | | | | 27X28 CONTEMPORARY BENTON | 502A |
| | | | | 2ND FLOOR PLAN | |