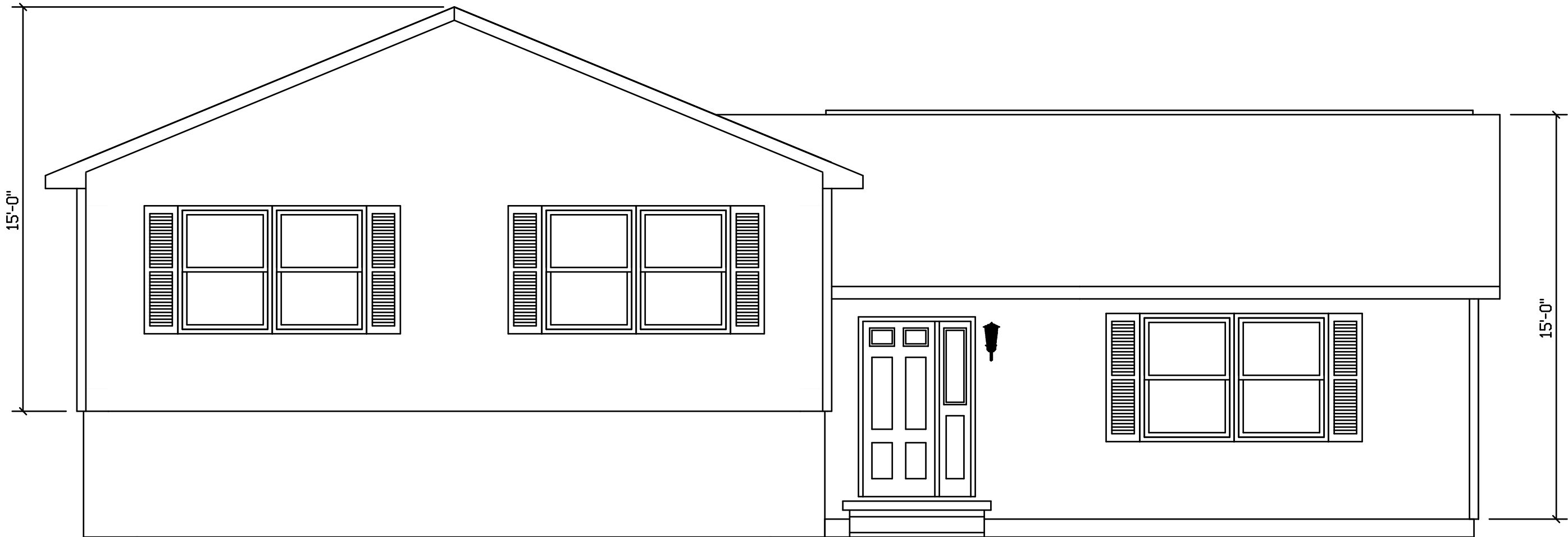


HAMPTON - 405

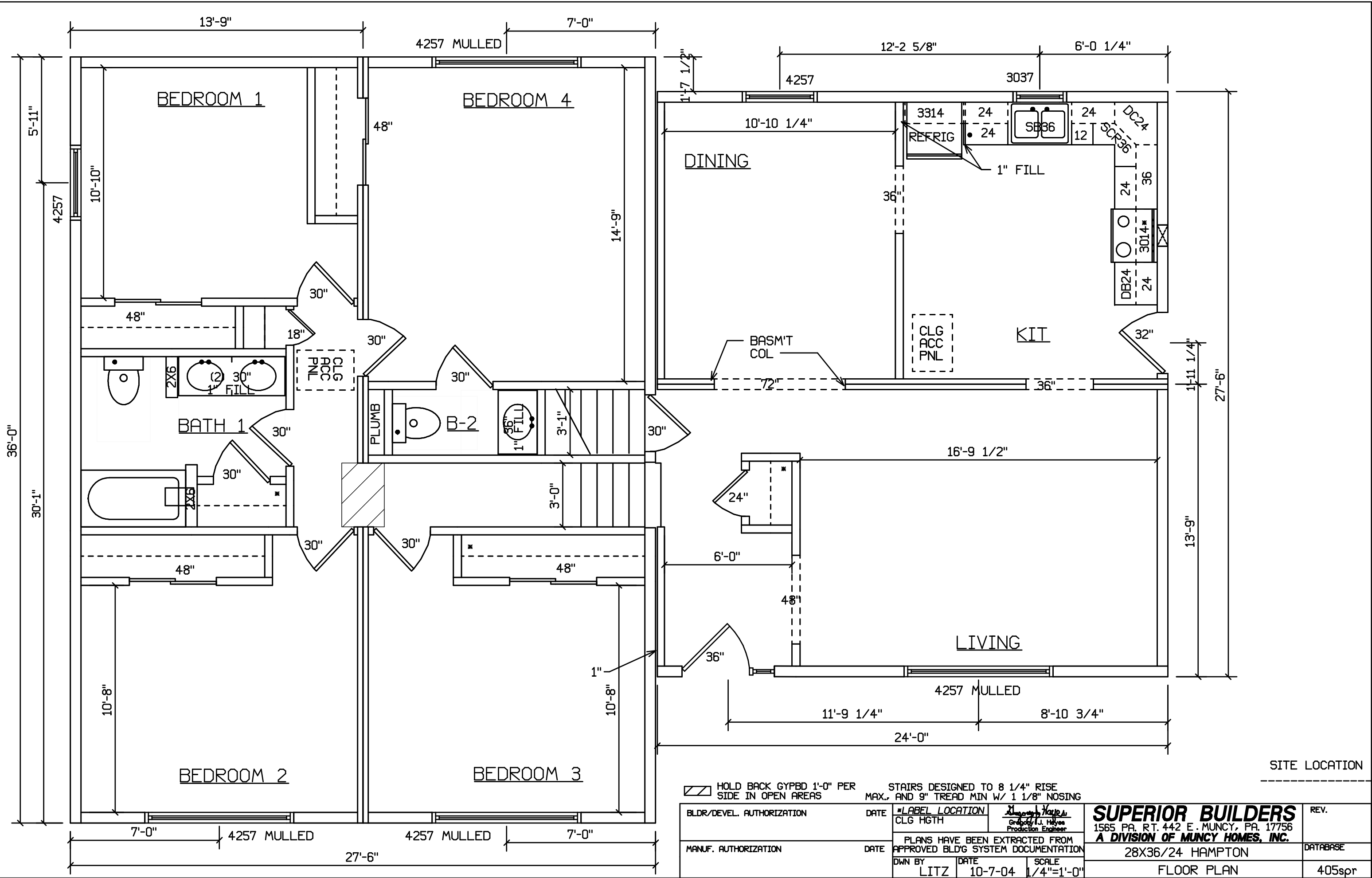


SITE LOCATION

HOLD BACK GYPBD 1'-0" PER SIDE IN OPEN AREAS

STAIRS DESIGNED TO 8 1/4" RISE MAX., AND 9" TREAD MIN W/ 1 1/8" NOSING

BLDR/DEVEL. AUTHORIZATION	DATE	# LABEL LOCATION	<i>Gregory J. Hayes</i> Production Engineer	SUPERIOR BUILDERS 1565 PA. RT. 442 E. MUNCY, PA. 17756 A DIVISION OF MUNCY HOMES, INC.	REV.
MANUF. AUTHORIZATION	DATE	PLANS HAVE BEEN EXTRACTED FROM APPROVED BLDG SYSTEM DOCUMENTATION			DATABASE
		DWN BY	DATE	SCALE	
		LITZ	10-7-04	1/4"=1'-0"	
					28X36/24 HAMPTON
					FRONT
					405spr



SITE LOCATION

HOLD BACK GYPBD 1'-0" PER SIDE IN OPEN AREAS		STAIRS DESIGNED TO 8 1/4" RISE MAX., AND 9" TREAD MIN W/ 1 1/8" NOSING	
BLDR/DEVEL. AUTHORIZATION	DATE	# LABEL LOCATION	<i>Gregory J. Hayes</i> Production Engineer
MANUF. AUTHORIZATION	DATE	CLG HGTH	
		PLANS HAVE BEEN EXTRACTED FROM APPROVED BLDG SYSTEM DOCUMENTATION	
DWN BY	DATE	SCALE	
LITZ	10-7-04	1/4"=1'-0"	

SUPERIOR BUILDERS
 1565 PA. RT. 442 E. MUNCY, PA. 17756
A DIVISION OF MUNCY HOMES, INC.
 28X36/24 HAMPTON
 FLOOR PLAN

REV.	
DATABASE	
	405spr