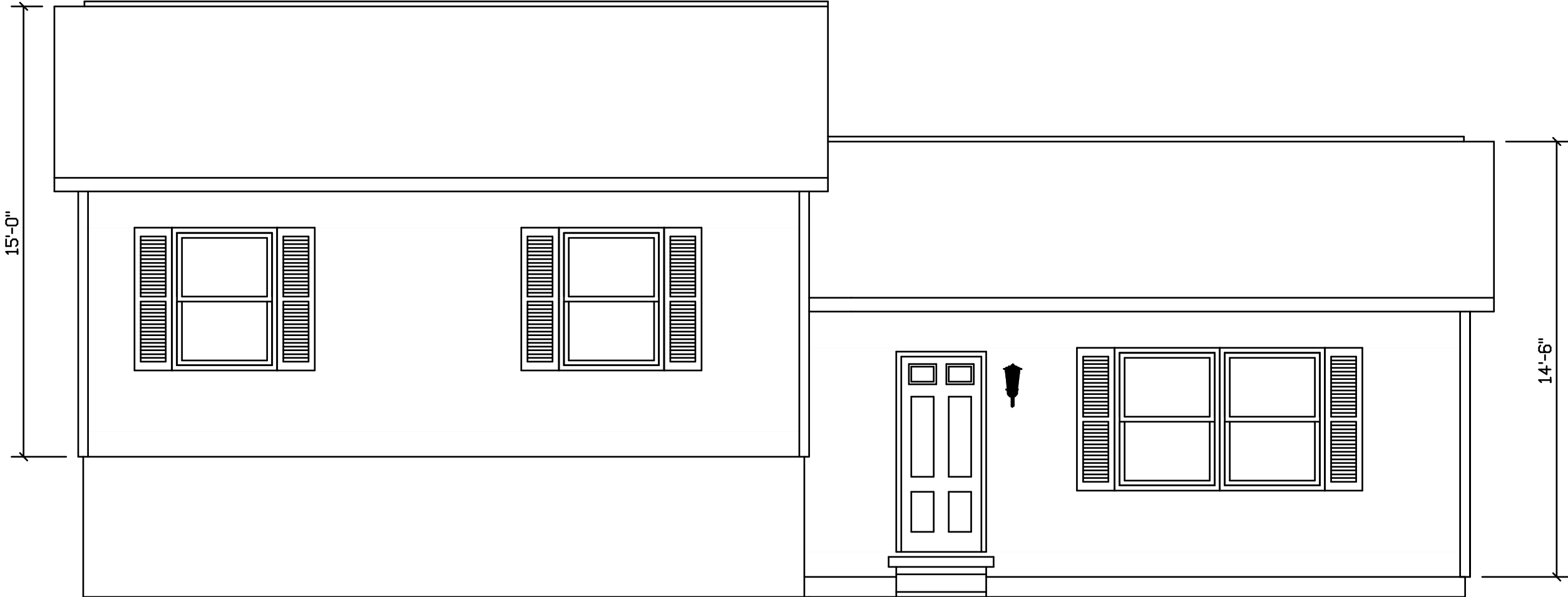


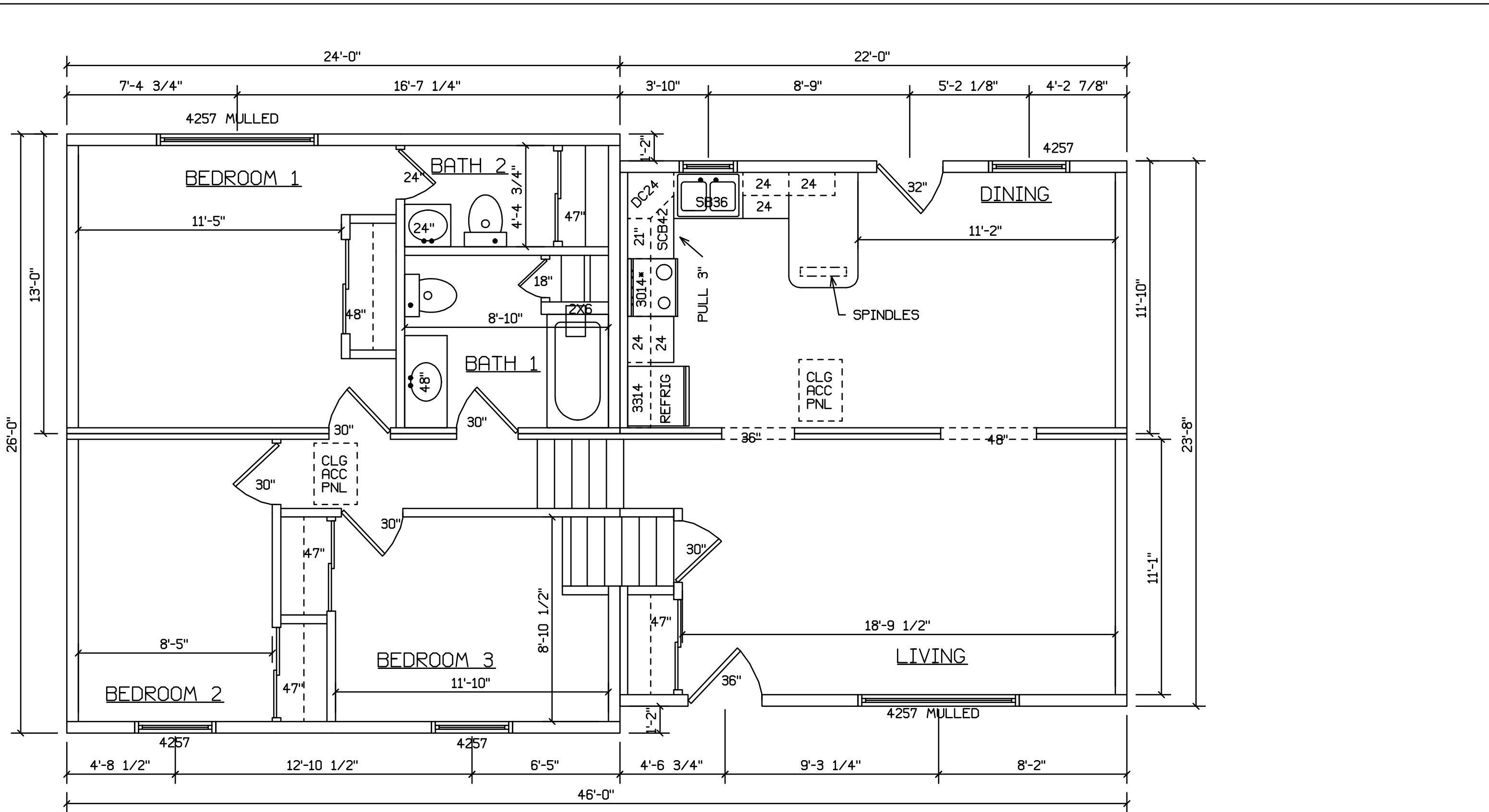
LYCOMING - 402



SITE LOCATION

STAIRS DESIGNED TO 8 1/4" RISE
MAX., AND 9" TREAD MIN W/ 1 1/8" NOSING

BLDR/DEVEL. AUTHORIZATION	DATE	# LABEL LOCATION	<i>Gregory J. Hayes</i> Production Engineer	SUPERIOR BUILDERS 1565 PA. RT. 442 E. MUNCY, PA. 17756 A DIVISION OF MUNCY HOMES, INC.	REV.
MANUF. AUTHORIZATION	DATE	CLG HGTH	PLANS HAVE BEEN EXTRACTED FROM APPROVED BLDG SYSTEM DOCUMENTATION		DATABASE
		DWN BY	DATE	SCALE	
		LITZ	6-12-03	1/4"=1'-0"	FRONT
					402



SITE LOCATION

STAIRS DESIGNED TO 8 1/4" RISE
 MAX., AND 9" TREAD MIN W/ 1 1/8" NOSING

BLDR/DEVEL. AUTHORIZATION	DATE	# LABEL LOCATION	1565 PA. RT. 442 E. MUNCY, PA. 17756	REV.
		CLG HGTH	<i>Gregory L. Hayes</i> Production Engineer	
MANUF. AUTHORIZATION	DATE	PLANS HAVE BEEN EXTRACTED FROM APPROVED BLD'G SYSTEM DOCUMENTATION		DATABASE
		DWN BY	SCALE	
		LITZ	1/4"=1'-0"	
		DATE	6-12-03	
SUPERIOR BUILDERS A DIVISION OF MUNCY HOMES, INC.				
24/26X46 SPLIT-LEVEL				FLOOR PLAN
				402