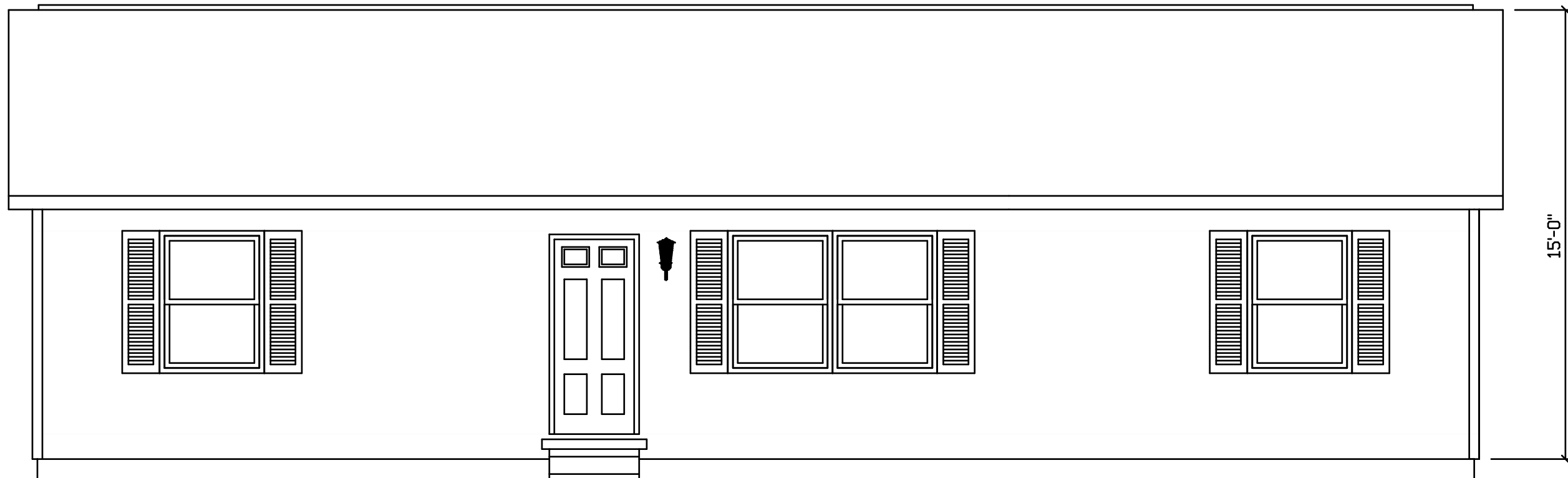
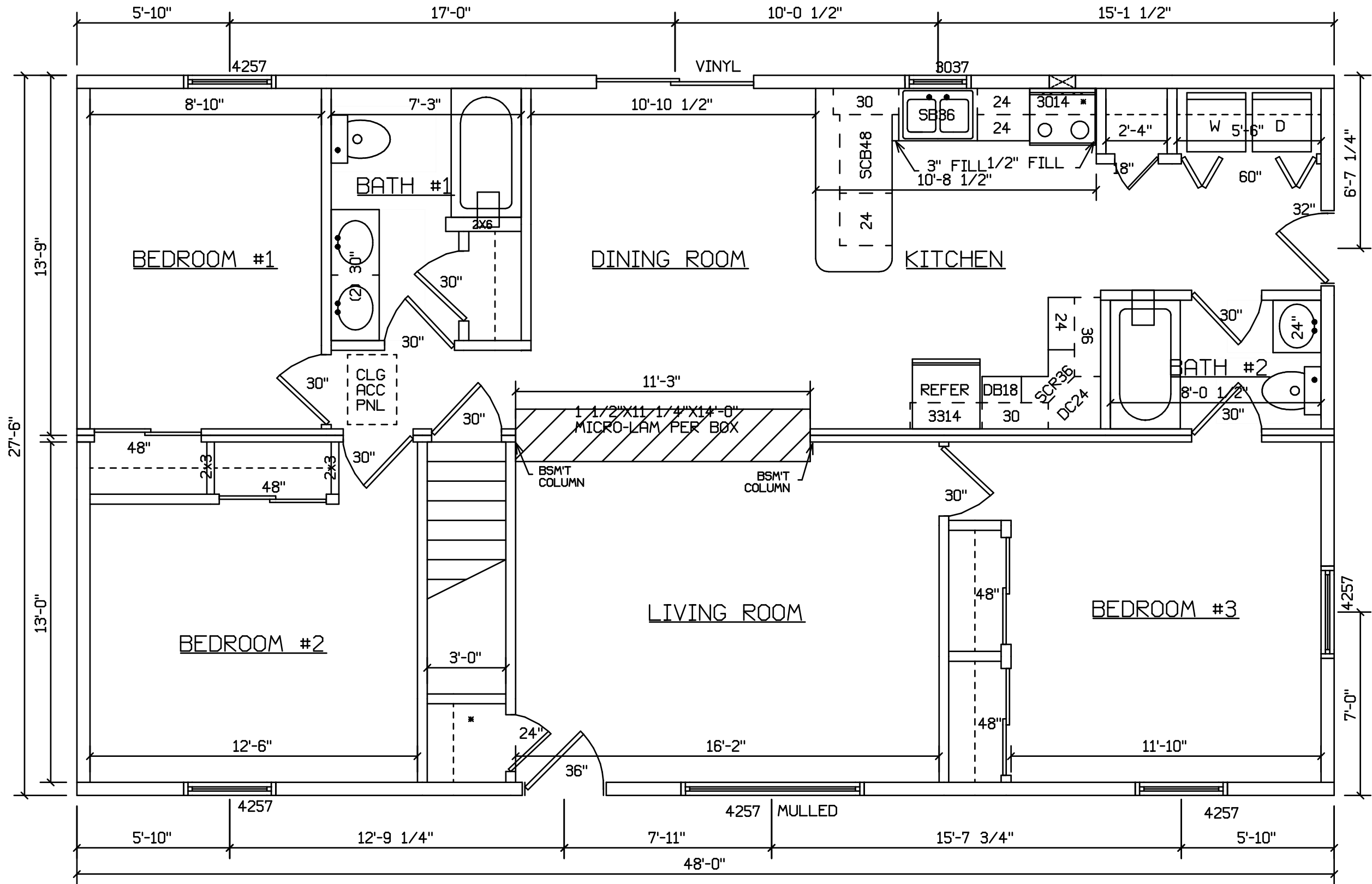


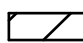
GREENSBURG 385




BLDR/DEVEL. AUTHORIZATION	DATE	# LABEL LOCATION	<i>Linda A. Litz</i> LINDA A. LITZ PRODUCTION ENGINEER	SUPERIOR BUILDERS 1565 PA. RT. 442 E. MUNCY, PA. 17756 A DIVISION OF MUNCY HOMES, INC.	REV.
MANUF. AUTHORIZATION	DATE	CLG HGTH	PLANS HAVE BEEN EXTRACTED FROM APPROVED BLDG SYSTEM DOCUMENTATION	BUILDER / CUSTOMER	DATABASE
		DWN BY	DATE	SCALE	385A
		LOWE	10-22-99	1/4"=1'-0"	28 X 48 RANCH - GREENSBURG
					13



SITE LOCATION

 HOLD BACK GYPBD 1'-0" PER SIDE IN OPEN AREAS
 STAIRS DESIGNED TO 8 1/4" RISE MAX., AND 9" TREAD MIN W/ 1 1/8" NOSING

BLDR/DEVEL. AUTHORIZATION	DATE	# LABEL LOCATION	 LINDA A. LITZ PRODUCTION ENGINEER	SUPERIOR BUILDERS 1565 PA. RT. 442 E. MUNCY, PA. 17756 A DIVISION OF MUNCY HOMES, INC.	REV.
MANUF. AUTHORIZATION	DATE	PLANS HAVE BEEN EXTRACTED FROM APPROVED BLDG SYSTEM DOCUMENTATION			BUILDER / CUSTOMER
		DWN BY LOWE	DATE 10-22-99	SCALE 1/4"=1'-0"	28 X 48 RANCH - GREENSBURG