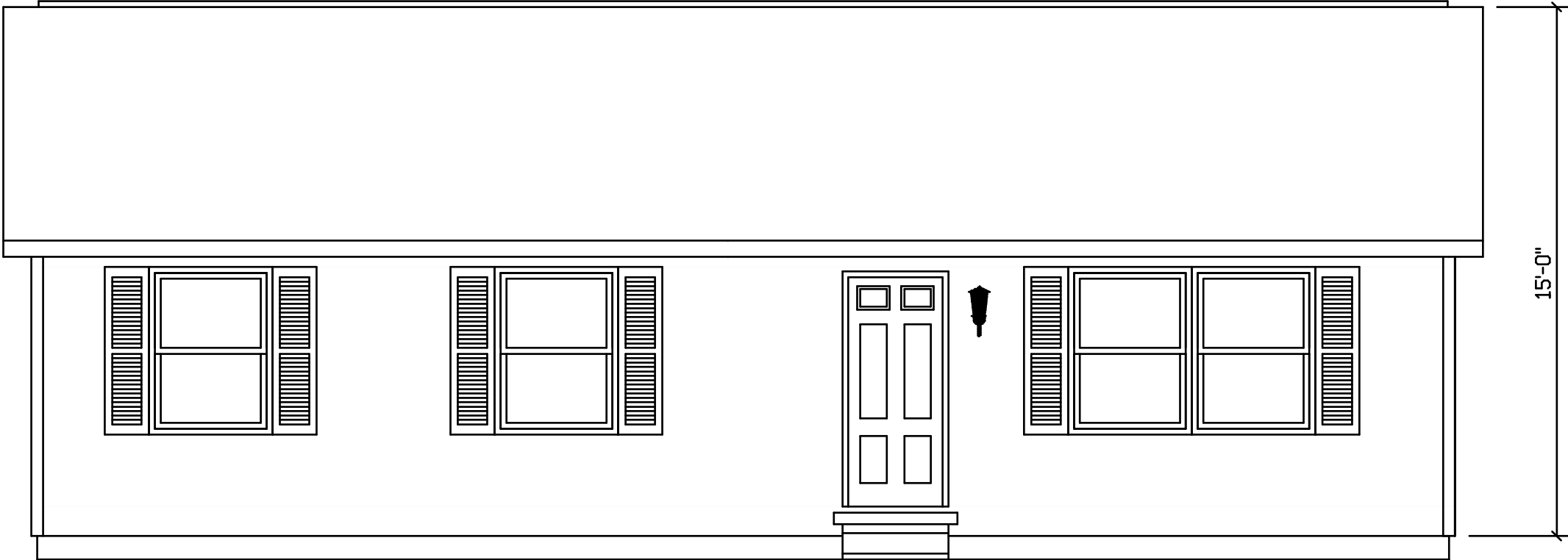
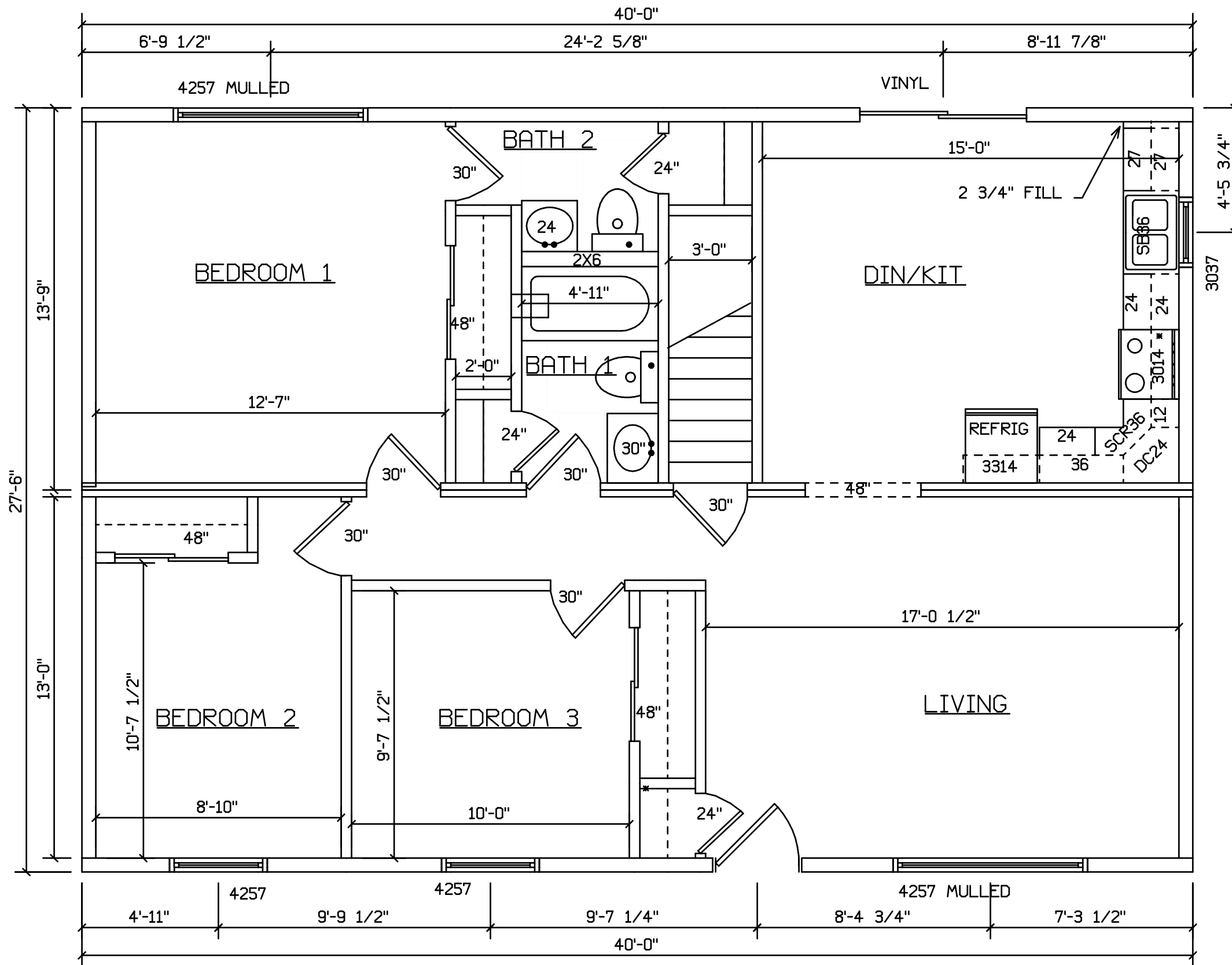


BEDFORD 382



BLDR/DEVEL. AUTHORIZATION	DATE	# LABEL LOCATION	<i>Linda A. Litz</i>	SUPERIOR BUILDERS 1565 PA. RT. 442 E. MUNCY, PA. 17756 A DIVISION OF MUNCY HOMES, INC.	REV.
		CLG HGTH	LINDA R. LITZ PRODUCTION ENGINEER		
MANUF. AUTHORIZATION	DATE	THIS PLAN DERIVED FROM MASTER SERIES BUILDING SYSTEM			DATABASE
		DWN BY	DATE	SCALE	
		LITZ	6-8-00	1/4"=1'-0"	28X40 BEDFORD-RANCH 382a



SITE LOCATION

STAIRS DESIGNED TO 8 1/4" RISE
MAX., AND 9" TREAD MIN W/ 1 1/8" NOSING

BLDR/DEVEL. AUTHORIZATION	DATE	# LABEL LOCATION	<i>Linda A. Litz</i> LINDA R. LITZ PRODUCTION ENGINEER	SUPERIOR BUILDERS 1565 PA. RT. 442 E. MUNCY, PA. 17756 A DIVISION OF MUNCY HOMES, INC.	REV.
MANUF. AUTHORIZATION	DATE	CLG HGTH			THIS PLAN DERIVED FROM MASTER SERIES BUILDING SYSTEM BLDR / CUST
		DWN BY	DATE	SCALE	
		LITZ	6-8-00	1/4"=1'-0"	28X40 BEDFORD-RANCH
					382a