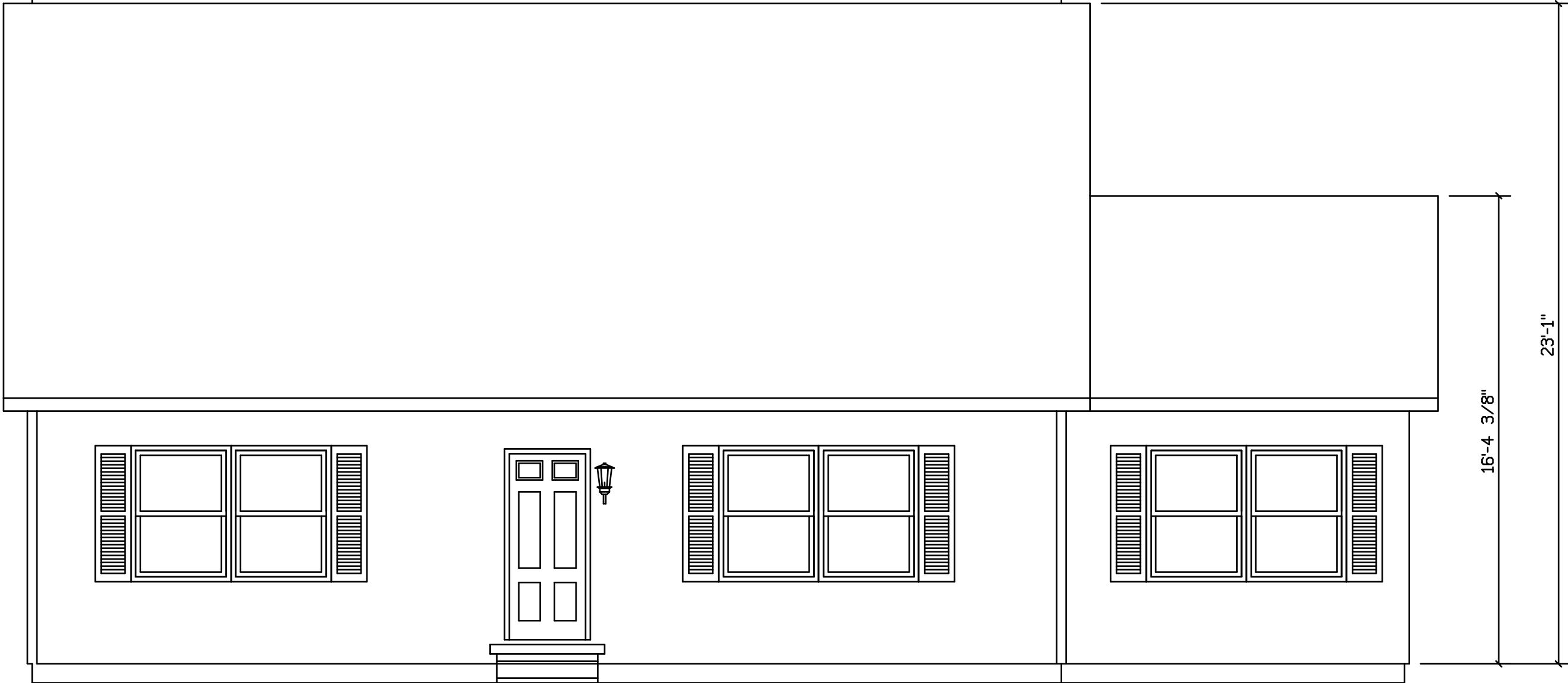


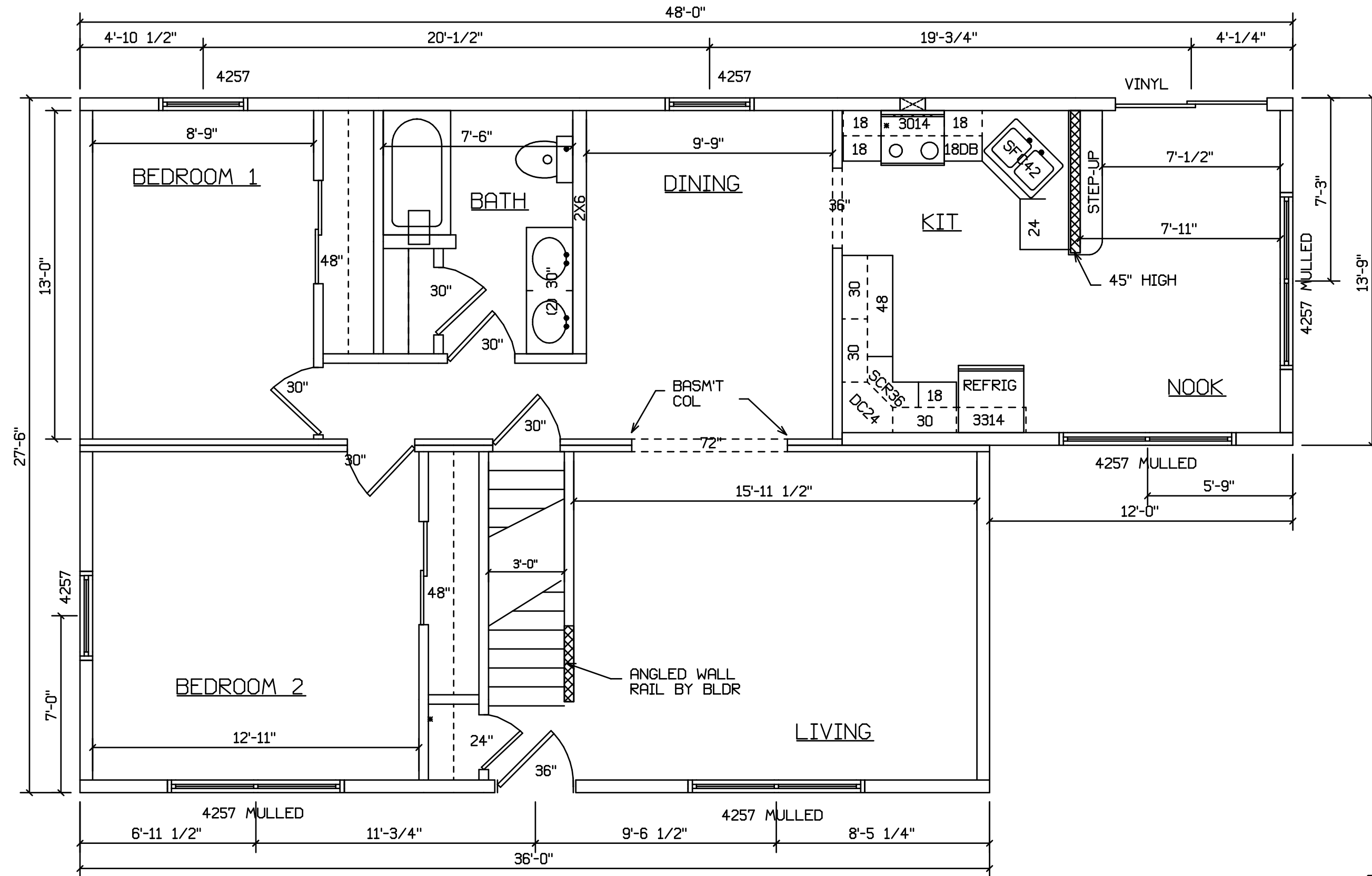
CAPE BARROW #341



SITE LOCATION

STAIRS DESIGNED TO 8 1/4" RISE
MAX., AND 9" TREAD MIN W/ 1 1/8" NOSING

Bldr/DEVEL. AUTHORIZATION	DATE	# LABEL LOCATION	<i>Joseph V. Kozlowski</i> Production Engineer	SUPERIOR BUILDERS 1565 PA. RT. 442 E. MUNCY, PA. 17756 A DIVISION OF MUNCY HOMES, INC.	REV.
MANUF. AUTHORIZATION	DATE	PLANS HAVE BEEN EXTRACTED FROM APPROVED BLDG SYSTEM DOCUMENTATION			DATABASE
		DWN BY	DATE	SCALE	
		LITZ	8-18-99	1/4"=1'-0"	
				FRONT	341a



SITE LOCATION

STAIRS DESIGNED TO 8 1/4" RISE
MAX., AND 9" TREAD MIN W/ 1 1/8" NOSING

BLDR/DEVEL. AUTHORIZATION	DATE	# LABEL LOCATION	<i>Gregory J. Hayee</i> Production Engineer	SUPERIOR BUILDERS 1565 PA. RT. 442 E. MUNCY, PA. 17756 A DIVISION OF MUNCY HOMES, INC.	REV.
MANUF. AUTHORIZATION	DATE	CLG HGTH	PLANS HAVE BEEN EXTRACTED FROM APPROVED BLDG SYSTEM DOCUMENTATION		DATABASE
		DWN BY	DATE	SCALE	
		LITZ	8-18-99	1/4"=1'-0"	FLOOR PLAN 341a

CAPE BARROW #341
WITH OPTIONAL 60" DORMERS



STAIRS DESIGNED TO 8 1/4" RISE
MAX., AND 9" TREAD MIN W/ 1 1/8" NOSING

Bldr/DEVEL. AUTHORIZATION	DATE	# LABEL LOCATION	<i>Joseph V. ...</i> Production Engineer	SUPERIOR BUILDERS 1565 PA. RT. 442 E. MUNCY, PA. 17756 A DIVISION OF MUNCY HOMES, INC.	REV.
MANUF. AUTHORIZATION	DATE	PLANS HAVE BEEN EXTRACTED FROM APPROVED BLDG SYSTEM DOCUMENTATION			DATABASE
		DWN BY	DATE	SCALE	
		LITZ	8-18-99	1/4"=1'-0"	
				FRONT	341a

SITE LOCATION
