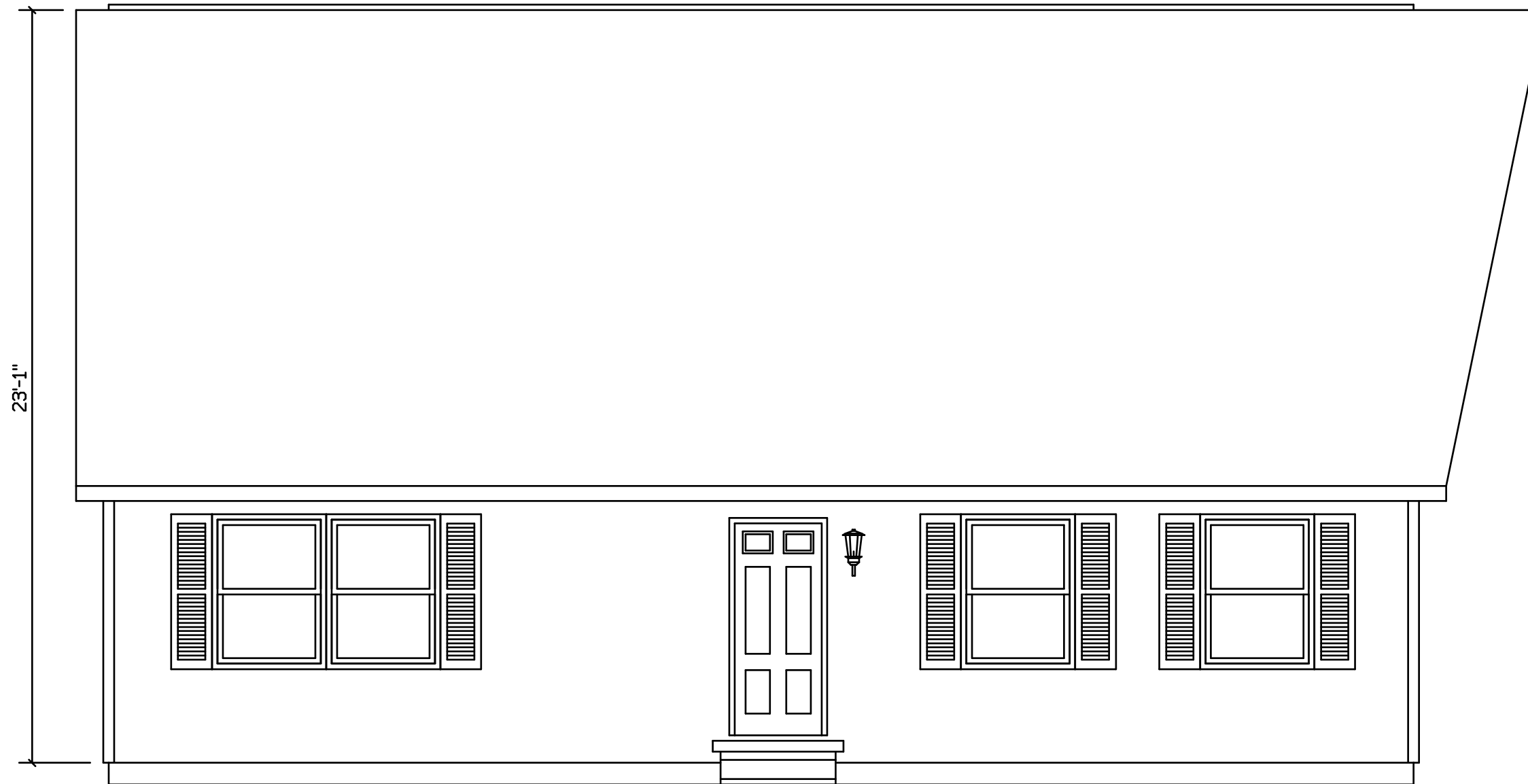


ASPEN #332

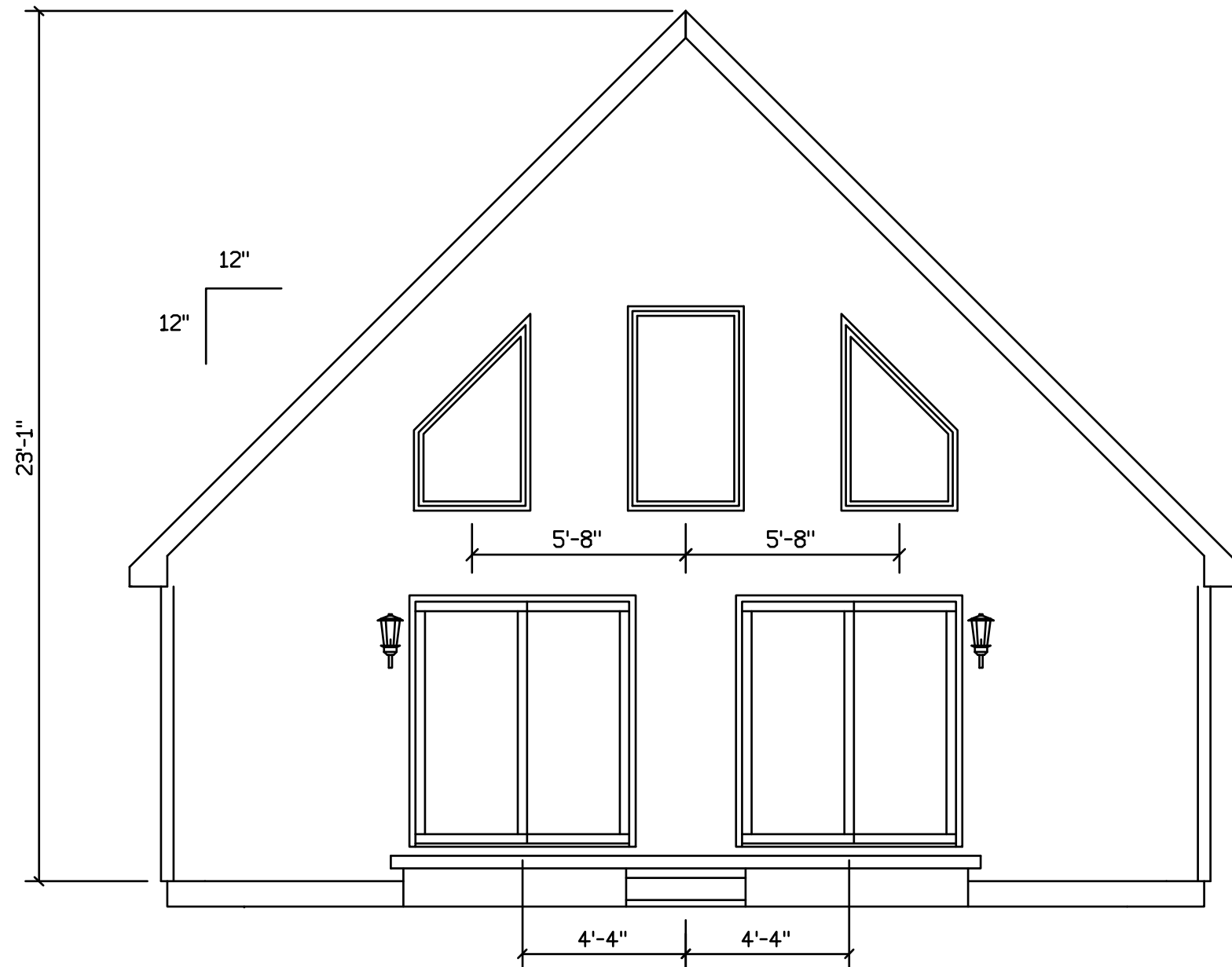


SITE LOCATION

STAIRS DESIGNED TO 8 1/4" RISE
MAX., AND 9" TREAD MIN W/ 1 1/8" NOSING

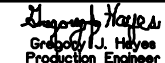
BLDR/DEVEL. AUTHORIZATION	DATE	# LABEL LOCATION	<i>Gregory J. Hayes</i> Production Engineer	SUPERIOR BUILDERS 1565 PA. RT. 442 E. MUNCY, PA. 17756 A DIVISION OF MUNCY HOMES, INC.	REV.
MANUF. AUTHORIZATION	DATE	CLG HGTH	PLANS HAVE BEEN EXTRACTED FROM APPROVED BLDG SYSTEM DOCUMENTATION		DATABASE
		DWN BY	DATE	SCALE	
		LITZ	02-28-00	1/4"=1'-0"	FRONT
					332a

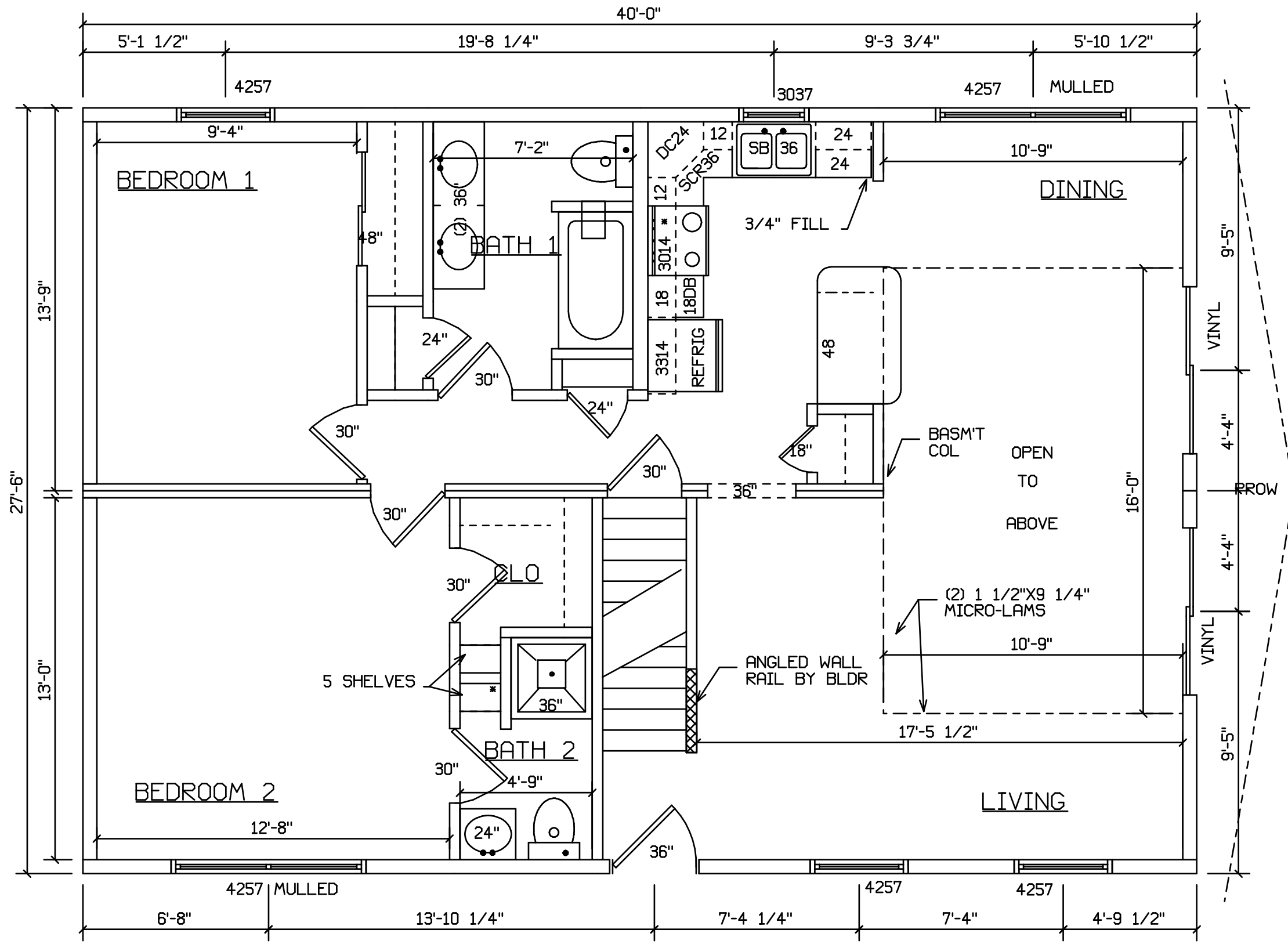
ASPEN #332



SITE LOCATION

STAIRS DESIGNED TO 8 1/4" RISE
MAX., AND 9" TREAD MIN W/ 1 1/8" NOSING

BLDR/DEVEL. AUTHORIZATION	DATE	# LABEL LOCATION	 Gregory J. Hayes Production Engineer	SUPERIOR BUILDERS 1565 PA. RT. 442 E. MUNCY, PA. 17756 A DIVISION OF MUNCY HOMES, INC.	REV.
MANUF. AUTHORIZATION	DATE	CLG HGTH			PLANS HAVE BEEN EXTRACTED FROM APPROVED BLDG SYSTEM DOCUMENTATION
		DWN BY	DATE	SCALE	
		LITZ	02-28-00	1/4"=1'-0"	
					28X40 ASPEN CAPE CHALET SIDE 332a



TRAP GLASS ABOVE SGD AND PROW ARE STANDARD

SITE LOCATION

STAIRS DESIGNED TO 8 1/4" RISE MAX., AND 9" TREAD MIN W/ 1 1/8" NOSING


BLDR/DEVEL. AUTHORIZATION	DATE	# LABEL LOCATION	 Gregory J. Hayes Production Engineer	SUPERIOR BUILDERS 1565 PA. RT. 442 E. MUNCY, PA. 17756 A DIVISION OF MUNCY HOMES, INC.	REV.
MANUF. AUTHORIZATION	DATE	PLANS HAVE BEEN EXTRACTED FROM APPROVED BLDG SYSTEM DOCUMENTATION			28X40 ASPEN CAPE CHALET
		DWN BY LITZ	DATE 02-28-00	SCALE 1/4"=1'-0"	FLOOR PLAN
					332a

ASPEN #332
WITH OPTIONAL 60" DORMERS



SITE LOCATION

STAIRS DESIGNED TO 8 1/4" RISE
MAX., AND 9" TREAD MIN W/ 1 1/8" NOSING

BLDR/DEVEL. AUTHORIZATION	DATE	# LABEL LOCATION	 Gregory J. Hayes Production Engineer	SUPERIOR BUILDERS 1565 PA. RT. 442 E. MUNCY, PA. 17756 A DIVISION OF MUNCY HOMES, INC.	REV.
MANUF. AUTHORIZATION	DATE	CLG HGTH			PLANS HAVE BEEN EXTRACTED FROM APPROVED BLDG SYSTEM DOCUMENTATION
		DWN BY	DATE	SCALE	
		LITZ	02-28-00	1/4"=1'-0"	FRONT
					332a