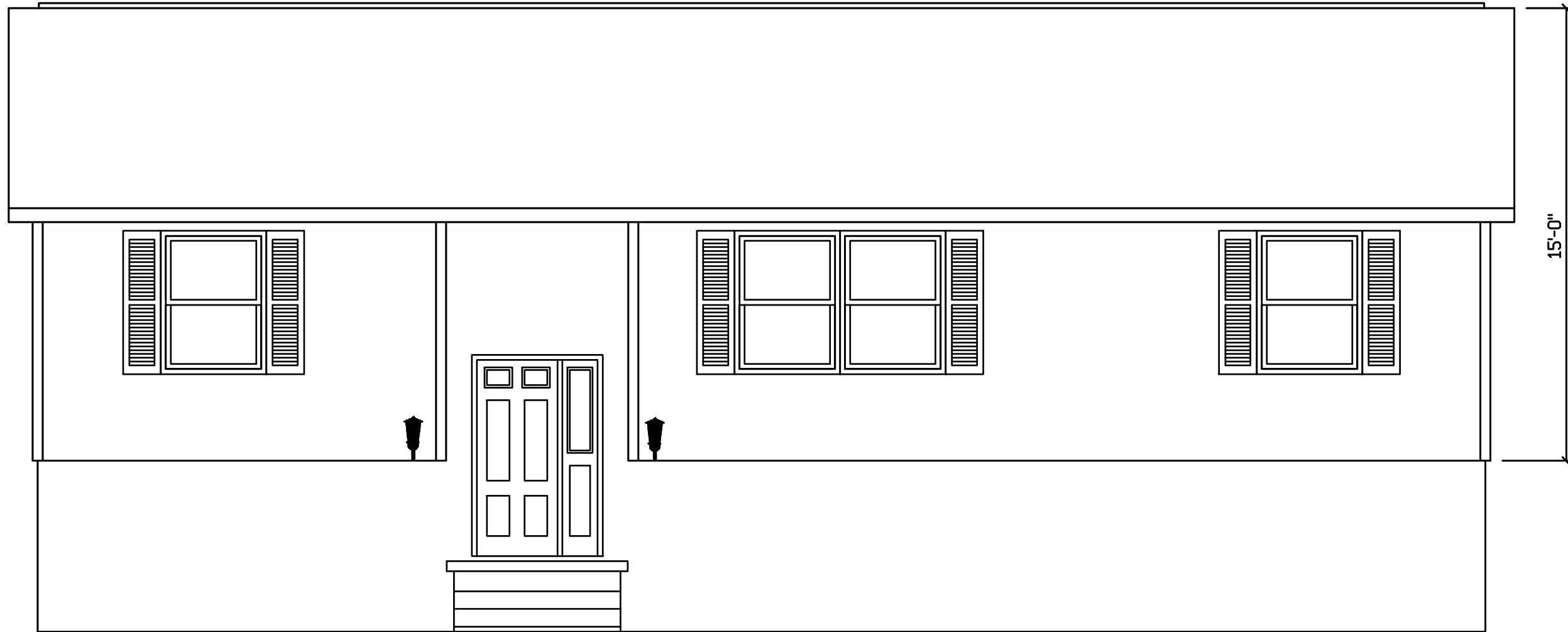


DANVILLE - 316



FINISH, WINDOWS, SHUTTERS, AND
STOOP BY BLDR ON SITE

INSTALLATION OF INSULATION
AND SOFFIT MATERIAL ON CANTILEVER
BY BUILDER ON SITE

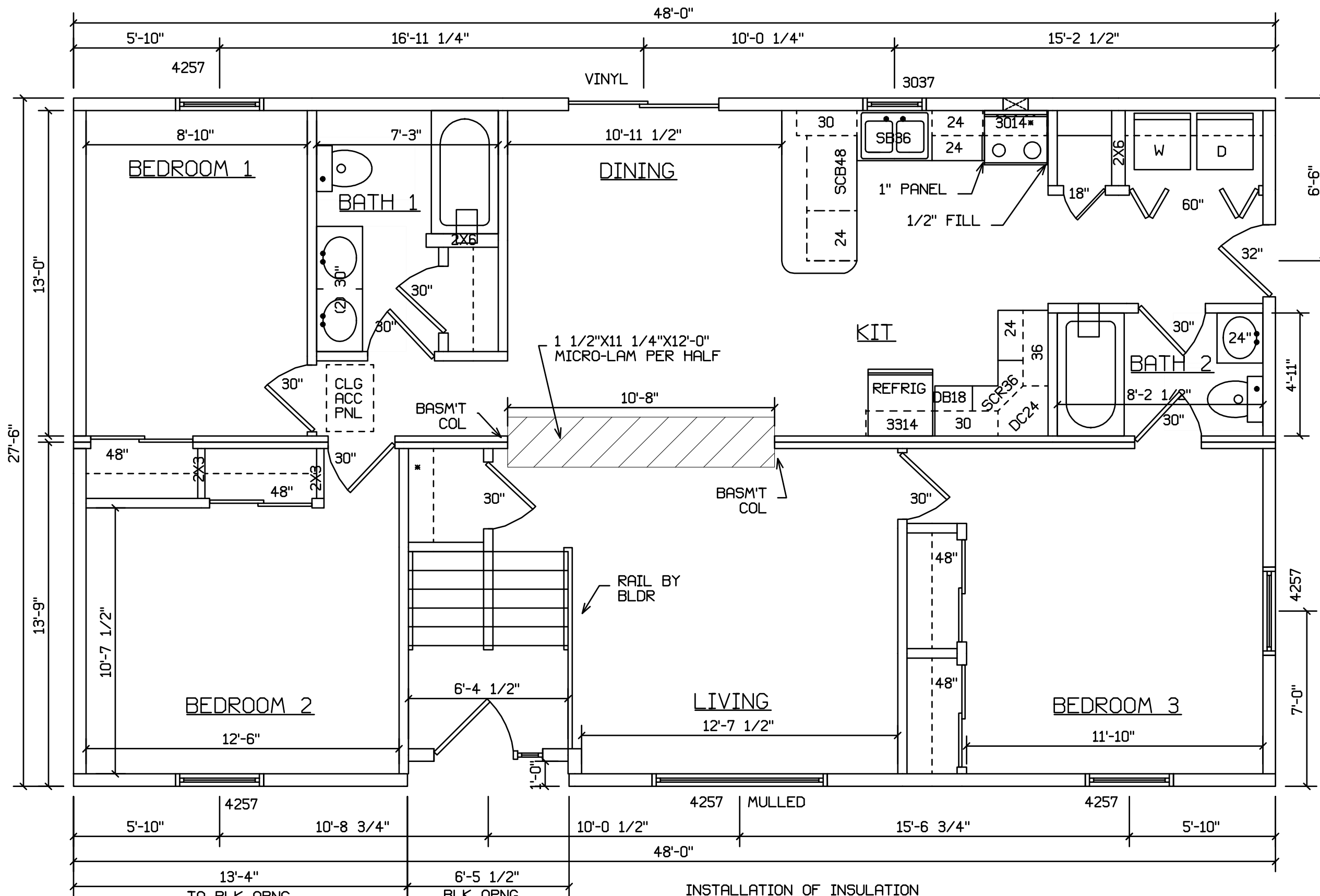
SITE LOCATION

 HOLD BACK GYPBD 1'-0" PER
SIDE IN OPEN AREAS

STAIRS DESIGNED TO 8 1/4" RISE
MAX., AND 9" TREAD MIN W/ 1 1/8" NOSING

BLDR/DEVEL. AUTHORIZATION	DATE	# LABEL LOCATION CLG HGTH	<i>Gregory J. Hayes</i> Production Engineer	SUPERIOR BUILDERS 1565 PA. RT. 442 E. MUNCY, PA. 17756 A DIVISION OF MUNCY HOMES, INC.	REV.
MANUF. AUTHORIZATION	DATE	PLANS HAVE BEEN EXTRACTED FROM APPROVED BLDG SYSTEM DOCUMENTATION	BLDR / CUST		DATABASE
		DWN BY LITZ	DATE 02-10-00	SCALE 1/4"=1'-0"	28X48 RAISED RANCH DANVILLE

316a



INSTALLATION OF INSULATION AND SOFFIT MATERIAL ON CANTILEVER BY BUILDER ON SITE

SITE LOCATION

HOLD BACK GYPBD 1'-0" PER SIDE IN OPEN AREAS

STAIRS DESIGNED TO 8 1/4" RISE MAX., AND 9" TREAD MIN W/ 1 1/8" NOSING

BLDR/DEVL. AUTHORIZATION	DATE	# LABEL LOCATION	 Gregory J. Hayes Production Engineer	SUPERIOR BUILDERS 1565 PA. RT. 442 E. MUNCY, PA. 17756 A DIVISION OF MUNCY HOMES, INC.	REV.
MANUF. AUTHORIZATION	DATE	PLANS HAVE BEEN EXTRACTED FROM APPROVED BLDG SYSTEM DOCUMENTATION			BLDR / CUST
		DWN BY LITZ	DATE 02-10-00	SCALE 1/4"=1'-0"	28X48 RAISED RANCH DANVILLE