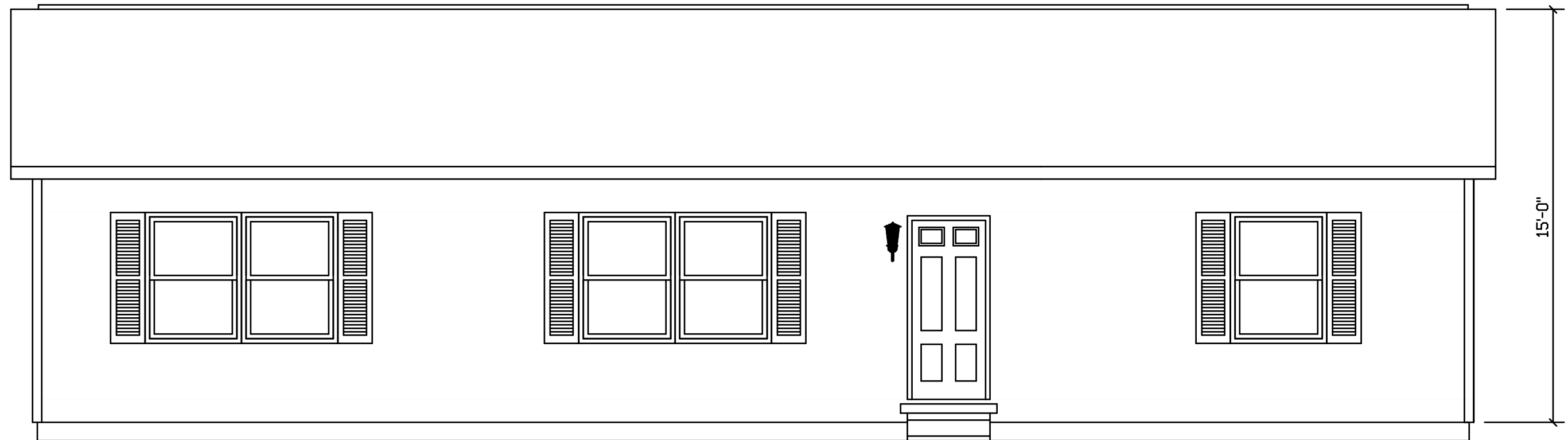
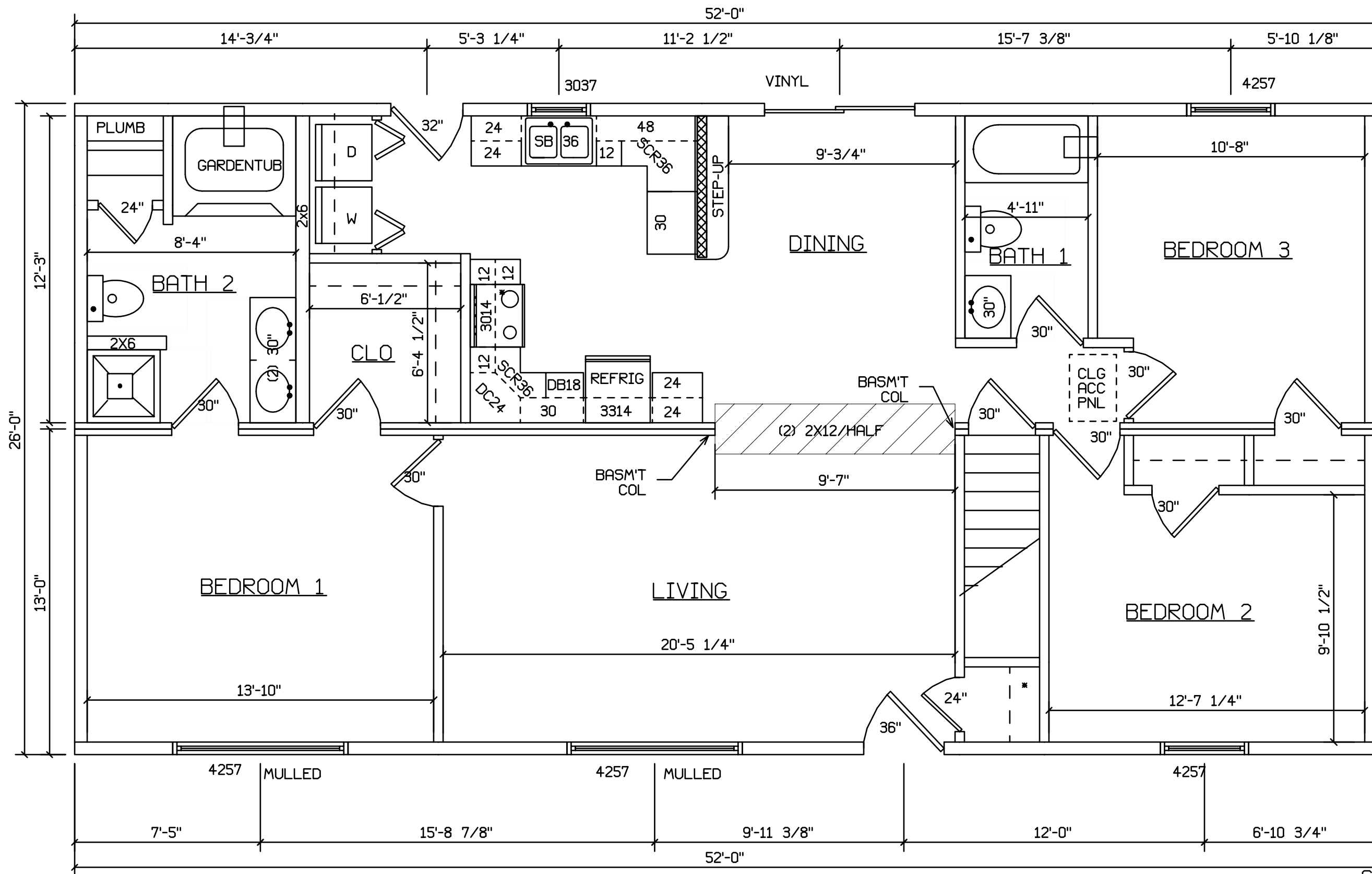


OHIO 265



BLDR/DEVEL. AUTHORIZATION	DATE	# LABEL LOCATION	<i>Linda A. Litz</i>	SUPERIOR BUILDERS 1565 PA. RT. 442 E. MUNCY, PA. 17756 A DIVISION OF MUNCY HOMES, INC.	REV.
		CLG HGTH	LINDA A. LITZ PRODUCTION ENGINEER		
MANUF. AUTHORIZATION	DATE	THIS PLAN DERIVED FROM MASTER PLAN SERIES BUILDING SYSTEM			DATABASE 265
		DWN BY	DATE	SCALE AND	BLDR / CUST
		LITZ	4-5-99	1/4"=1'-0"	7/12



SITE LOCATION

HOLD BACK GYPBD 1'-0" PER
 STAIRS DESIGNED TO SIDE IN OPEN AREAS
 MAX., AND 10" TREAD MIN W/ 1 1/8" NOSING
 STAIRS DESIGNED TO 8 1/4" RISE
 MAX., AND 9" TREAD MIN W/ 1 1/8" NOSING

BLDR/DEVEL. AUTHORIZATION	DATE	# LABEL LOCATION	 LINDA A. LITZ PRODUCTION ENGINEER	SUPERIOR BUILDERS 1565 PA. RT. 442 E. MUNCY, PA. 17756 A DIVISION OF MUNCY HOMES, INC.	REV.
MANUF. AUTHORIZATION	DATE	CLG HGTH			BLDR / CUST
		PLANS HAVE BEEN EXTRACTED FROM APPROVED BLDG SYSTEM DOCUMENTATION		BLDR / CUST	
		DWN BY	DATE	SCALE	
		LITZ	4-5-99	1/4"=1'-0"	
				26x52 OHIO RANCH	