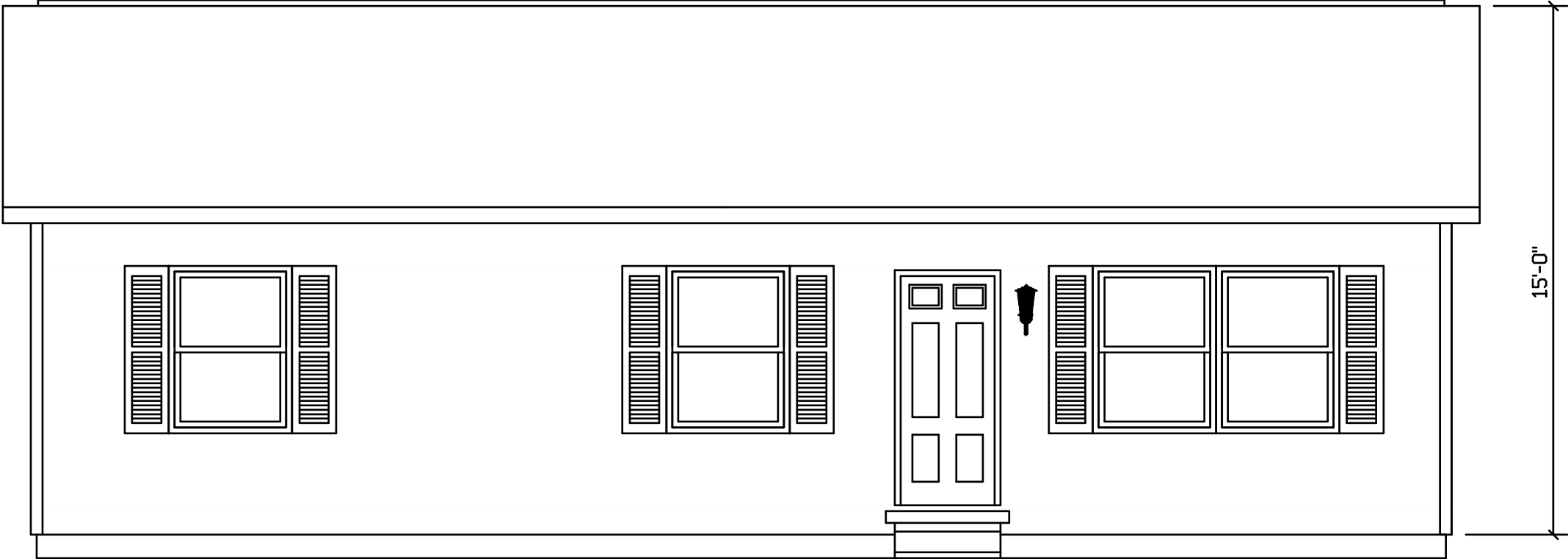
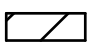


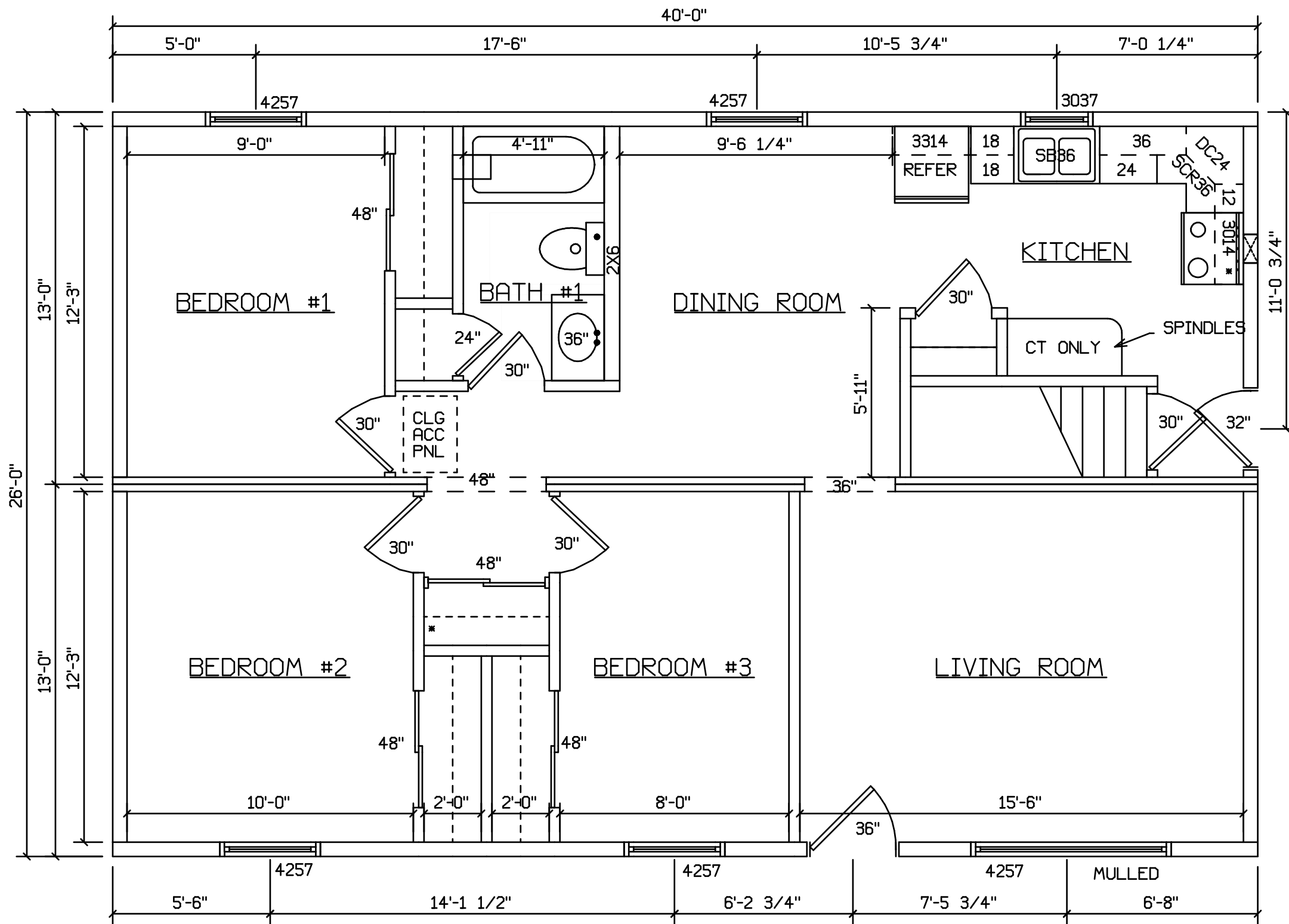
# ALLEGHENY 261



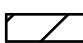
SITE LOCATION  
-----

 HOLD BACK GYPBD 1'-0" PER SIDE IN OPEN AREAS  
 STAIRS DESIGNED TO 8 1/4" RISE MAX., AND 9" TREAD MIN W/ 1 1/8" NOSING

|                           |      |  |                                      |  |          |
|---------------------------|------|--|--------------------------------------|--|----------|
| BLDR/DEVEL. AUTHORIZATION | DATE | # LABEL LOCATION                                     | <i>Linda A. Litz</i>                 | <b>SUPERIOR BUILDERS</b><br>1565 PA. RT. 442 E. MUNCY, PA. 17756<br><b>A DIVISION OF MUNCY HOMES, INC.</b> | REV.     |
|                           |      | CLG HGTH   | LINDA R. LITZ<br>PRODUCTION ENGINEER |  |          |
| MANUF. AUTHORIZATION      | DATE | THIS PLAN DERIVED FROM MASTER SERIES BUILDING SYSTEM |                                      |  | DATABASE |
|                           |      | DWN BY   | DATE                                 | SCALE  | 261A     |
|                           |      | LOWE   | 10-5-99                              | 1/4"=1'-0"   |          |
|                           |      |  |                                      | BLDR / CUST  |          |
|                           |      |  |                                      | 26X40 RANCH - ALLEGHENY  |          |



SITE LOCATION

 HOLD BACK GYPBD 1'-0" PER SIDE IN OPEN AREAS  
 STAIRS DESIGNED TO 8 1/4" RISE MAX., AND 9" TREAD MIN W/ 1 1/8" NOSING

|                           |      |  |  |  |          |
|---------------------------|------|--|--|--|----------|
| BLDR/DEVEL. AUTHORIZATION | DATE | # LABEL LOCATION                                     | <i>Linda A. Litz</i><br>LINDA R. LITZ<br>PRODUCTION ENGINEER | <b>SUPERIOR BUILDERS</b><br>1565 PA. RT. 442 E. MUNCY, PA. 17756<br><b>A DIVISION OF MUNCY HOMES, INC.</b> | REV.     |
| MANUF. AUTHORIZATION      | DATE | THIS PLAN DERIVED FROM MASTER SERIES BUILDING SYSTEM |  |  | DATABASE |
|                           |      | DWN BY   | DATE   | SCALE  |          |
|                           |      | LOWE   | 10-5-99  | 1/4"=1'-0"   | 261A     |
|                           |      |  |  | BLDR / CUST  |          |
|                           |      |  |  | 26X40 RANCH - ALLEGHENY  |          |