

CAPE COD #231



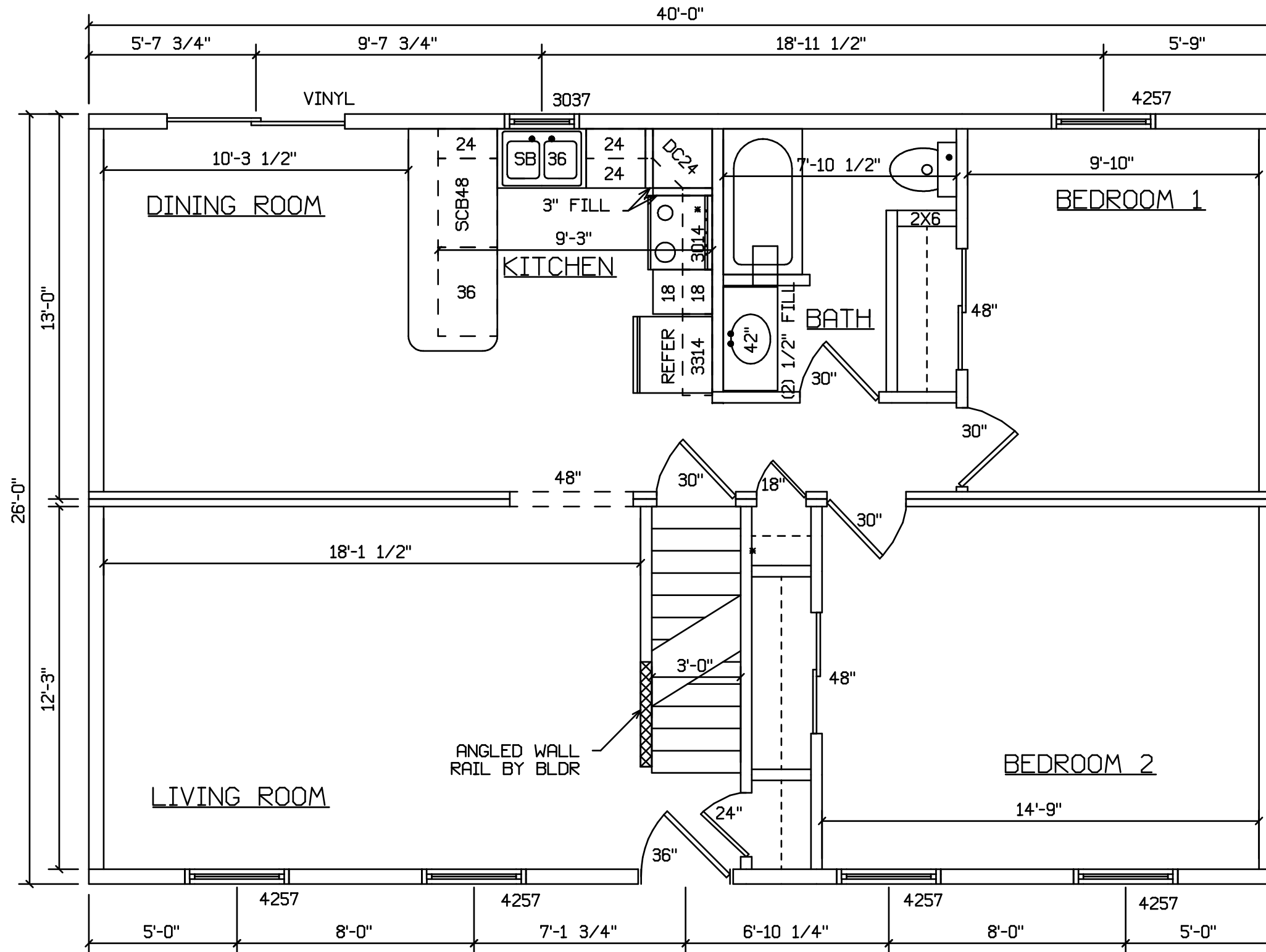
FRONT

SITE LOCATION

IF DISHWASHER INSTALLED FILLERS NEED TO BE 5" BTWN DW AND CORNER AND 4" BTWN CORNER AND RANGE.

STAIRS DESIGNED TO 8 1/4" RISE MAX., AND 9" TREAD MIN W/ 1 1/8" NOSING

BLDR/DEVEL. AUTHORIZATION	DATE	# LABEL LOCATION	<i>Gregory J. Hayes</i> Production Engineer	SUPERIOR BUILDERS 1565 PA. RT. 442 E. MUNCY, PA. 17756 A DIVISION OF MUNCY HOMES, INC.	REV.
MANUF. AUTHORIZATION	DATE	PLANS HAVE BEEN EXTRACTED FROM APPROVED BLDG SYSTEM DOCUMENTATION	SCALE		DATABASE
		DWN BY	DATE	CAPE COD 26'-0"x40'-0"	
		LOWE	1/4"=1'-0"	FRONT	231A



SITE LOCATION

IF DISHWASHER INSTALLED FILLERS NEED TO BE 5" BTWN DW AND CORNER AND 4" BTWN CORNER AND RANGE.

STAIRS DESIGNED TO 8 1/4" RISE MAX., AND 9" TREAD MIN W/ 1 1/8" NOSING

BLDR/DEVEL. AUTHORIZATION	DATE	# LABEL LOCATION	CLG HGTH	<i>Gregory J. Hayes</i> Production Engineer	SUPERIOR BUILDERS 1565 PA. RT. 442 E. MUNCY, PA. 17756 A DIVISION OF MUNCY HOMES, INC.	REV.
MANUF. AUTHORIZATION	DATE	PLANS HAVE BEEN EXTRACTED FROM APPROVED BLDG SYSTEM DOCUMENTATION		CAPE COD 26'-0"x40'-0"		DATABASE
		DWN BY	DATE	SCALE		FLOOR PLAN

DWN BY LOWE DATE 1/4"=1'-0" SCALE

CAPE COD #231
WITH OPTIONAL 60" DORMERS



FRONT

SITE LOCATION

IF DISHWASHER INSTALLED FILLERS NEED TO BE 5" BTWN DW AND CORNER AND 4" BTWN CORNER AND RANGE.

STAIRS DESIGNED TO 8 1/4" RISE MAX., AND 9" TREAD MIN W/ 1 1/8" NOSING

BLDR/DEVEL. AUTHORIZATION	DATE	# LABEL LOCATION	<i>Gregory J. Hayes</i> Production Engineer	SUPERIOR BUILDERS 1565 PA. RT. 442 E. MUNCY, PA. 17756 A DIVISION OF MUNCY HOMES, INC.	REV.
MANUF. AUTHORIZATION	DATE	CLG HGTH	PLANS HAVE BEEN EXTRACTED FROM APPROVED BLDG SYSTEM DOCUMENTATION		DATABASE
		DWN BY	DATE	SCALE	
		LOWE	1/4"=1'-0"		
				FRONT	231A