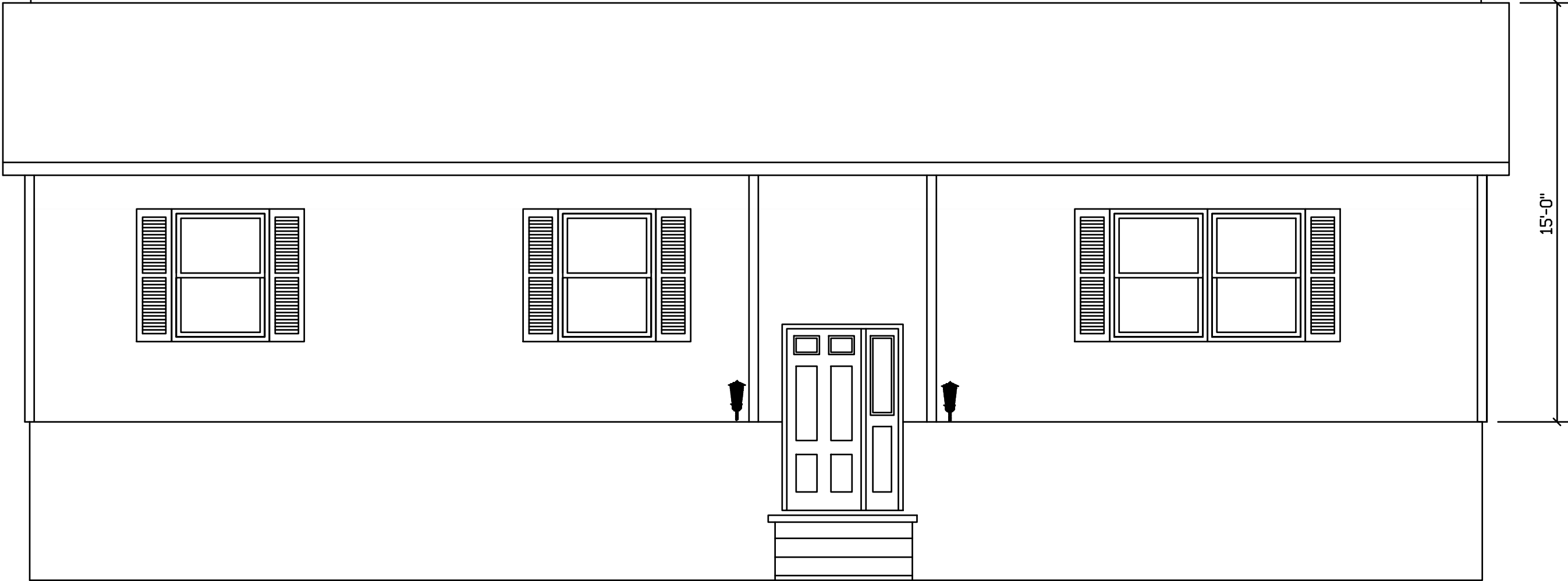
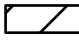


RICHMOND - 219

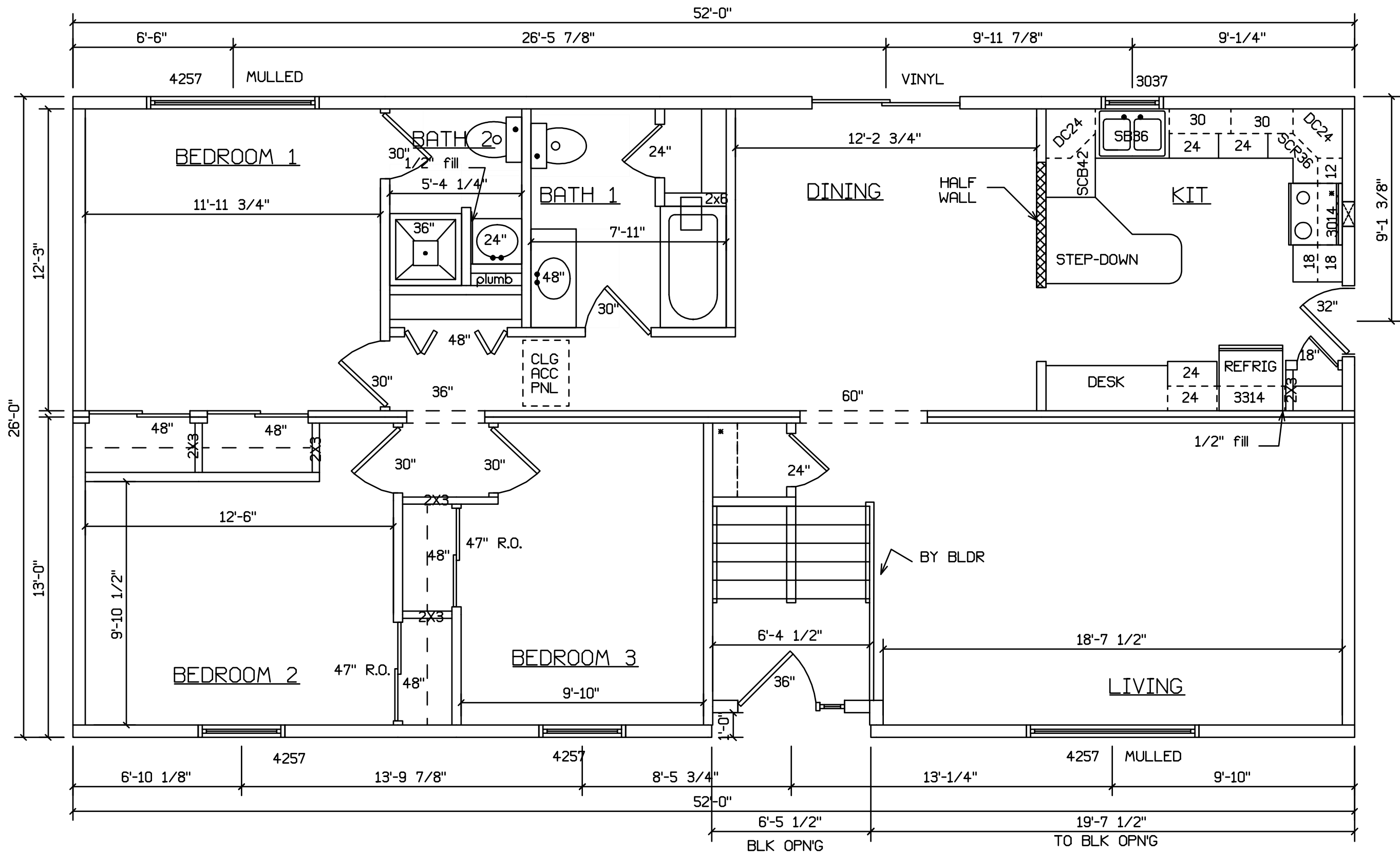


FINISH, WINDOWS, SHUTTERS, AND
STOOP BY BLDR ON SITE

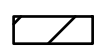
SITE LOCATION

 HOLD BACK GYPBD 1'-0" PER
SIDE IN OPEN AREAS
STAIRS DESIGNED TO 8 1/4" RISE
MAX., AND 9" TREAD MIN W/ 1 1/8" NOSING

BLDR/DEVEL. AUTHORIZATION	DATE	# LABEL LOCATION	<i>Gregory J. Hayee</i> Production Engineer	SUPERIOR BUILDERS 1565 PA. RT. 442 E. MUNCY, PA. 17756 A DIVISION OF MUNCY HOMES, INC.	REV.
MANUF. AUTHORIZATION	DATE	CLG HGTH	PLANS HAVE BEEN EXTRACTED FROM APPROVED BLDG SYSTEM DOCUMENTATION		BUILDER/CUSTOMER
		DWN BY	DATE	SCALE	DATABASE
		LITZ	3-17-99	1/4"=1'-0"	219a
				26X52 RICHMOND RAISED RANCH	219



SITE LOCATION

 HOLD BACK GYPBD 1'-0" PER SIDE IN OPEN AREAS
 STAIRS DESIGNED TO 8 1/4" RISE MAX., AND 9" TREAD MIN W/ 1 1/8" NOSING

BLDR/DEVEL. AUTHORIZATION	DATE	# LABEL LOCATION	<i>Gregory J. Hayes</i> Production Engineer	SUPERIOR BUILDERS 1565 PA. RT. 442 E. MUNCY, PA. 17756 A DIVISION OF MUNCY HOMES, INC.	REV.
MANUF. AUTHORIZATION	DATE	PLANS HAVE BEEN EXTRACTED FROM APPROVED BLDG SYSTEM DOCUMENTATION	BUILDER/CUSTOMER		DATABASE
		DWN BY	DATE	SCALE	
		LITZ	3-17-99	1/4"=1'-0"	219a
					219

26X52 RICHMOND RAISED RANCH