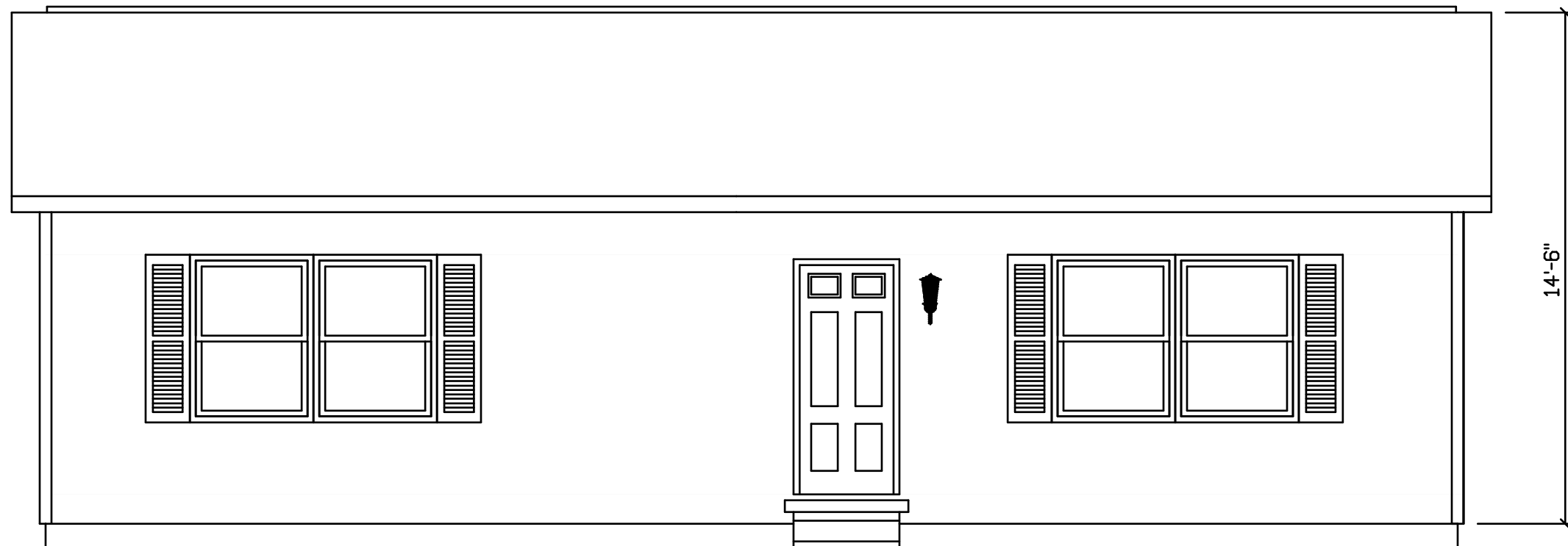
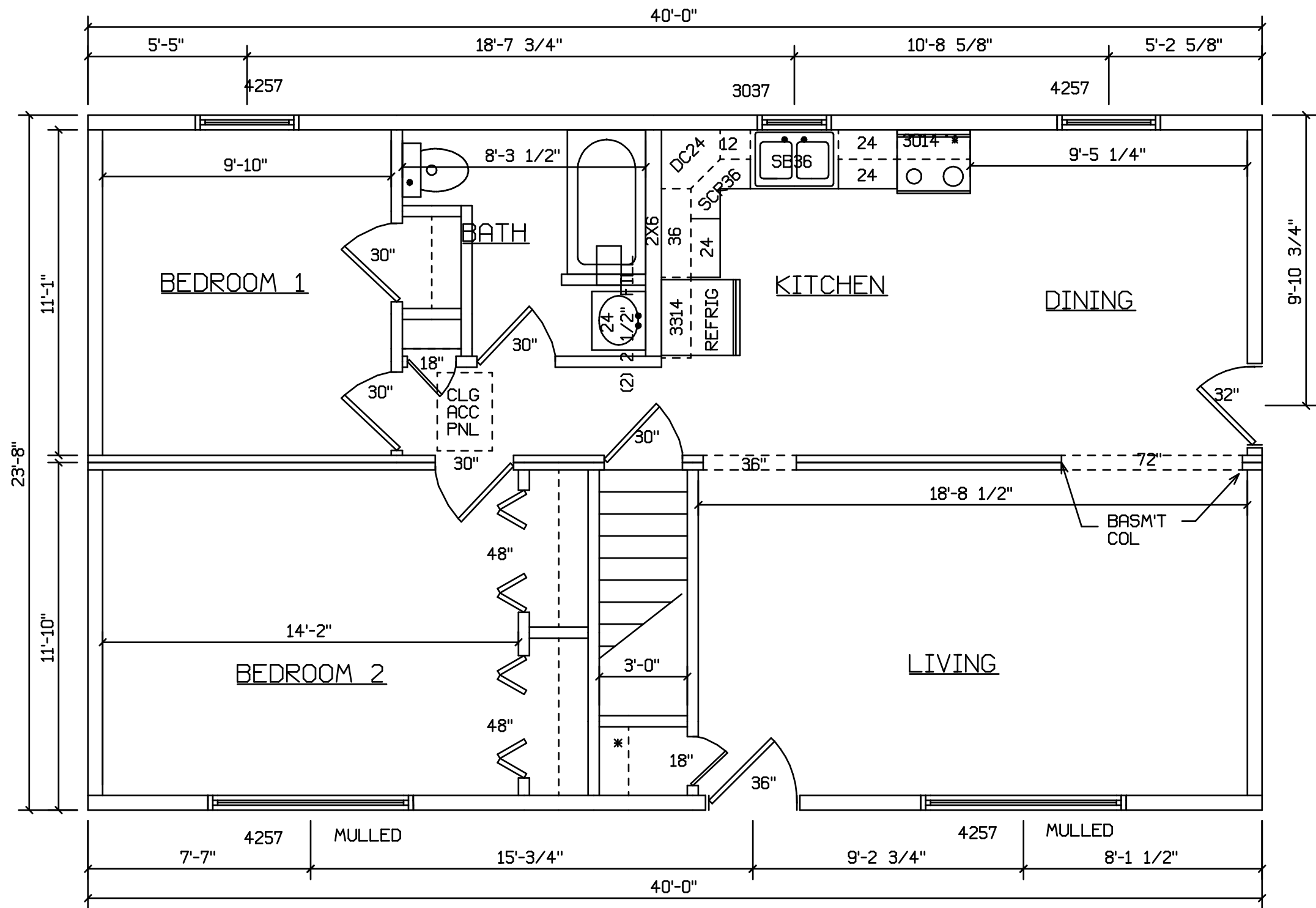


# CLINTON 142



Bldr/DEVEL. AUTHORIZATION	DATE	# LABEL LOCATION	<i>Linda A. Litz</i> LINDA A. LITZ PRODUCTION ENGINEER	<b>SUPERIOR BUILDERS</b> 1565 PA. RT. 442 E. MUNCY, PA. 17756 <b>A DIVISION OF MUNCY HOMES, INC.</b>	REV.
MANUF. AUTHORIZATION	DATE	THIS PLAN DERIVED FROM MASTER SERIES BUILDING SYSTEM			DATABASE 142a
		DWN BY	DATE	SCALE	142
		LITZ	7-15-99	1/4"=1'-0"	



SITE LOCATION  
-----

STAIRS DESIGNED TO 8 1/4" RISE  
MAX., AND 9" TREAD MIN W/ 1 1/8" NOSING

Bldr/DEVEL. AUTHORIZATION	DATE	*LABEL LOCATION CLG HGTH	Linda A. Litz LINDA A. LITZ PRODUCTION ENGINEER	<b>SUPERIOR BUILDERS</b> 1565 PA. RT. 442 E. MUNCY, PA. 17756 <b>A DIVISION OF MUNCY HOMES, INC.</b>	REV.
MANUF. AUTHORIZATION	DATE	THIS PLAN DERIVED FROM MASTER SERIES BUILDING SYSTEM		BUILD/CUST	DATABASE 142a
		DWN BY LITZ	DATE 7-15-99	SCALE 1/4"=1'-0"	24X40 RANCH - CLINTON 142