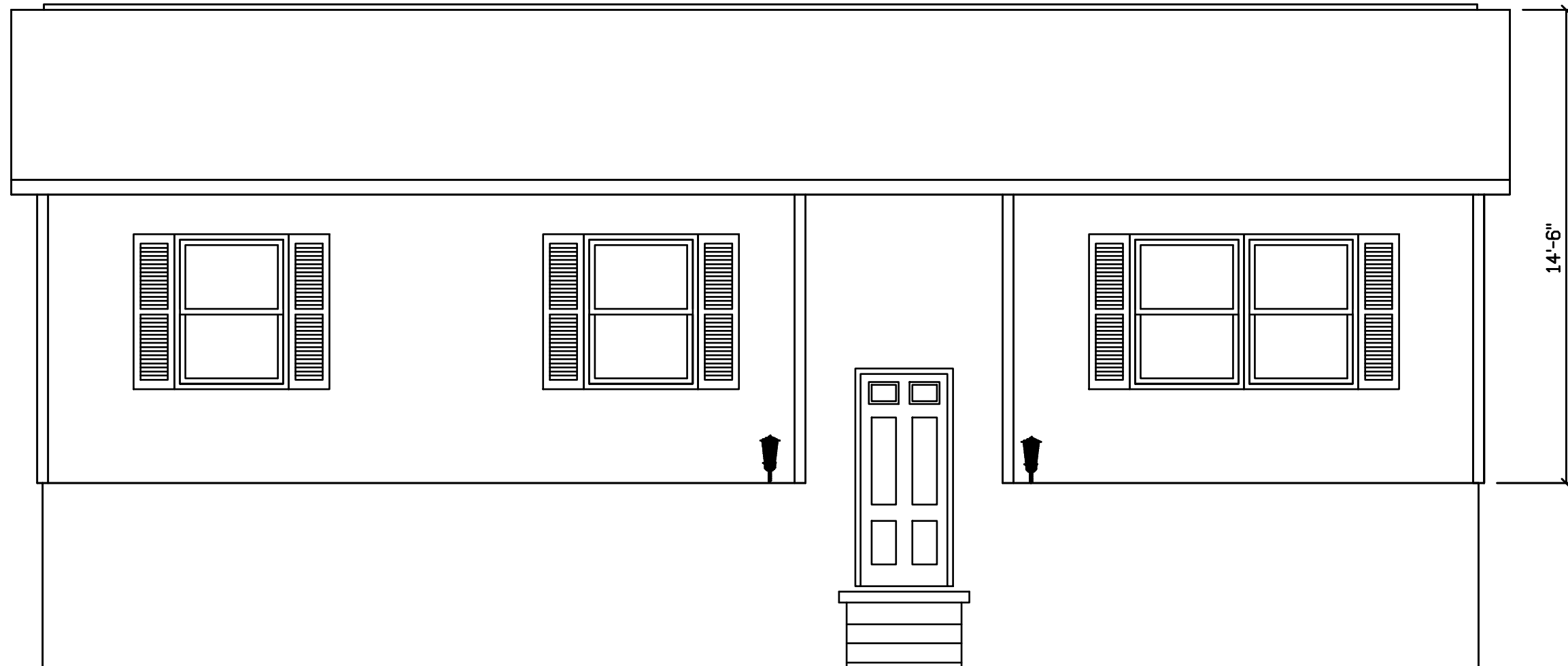


CRAFTON - 111



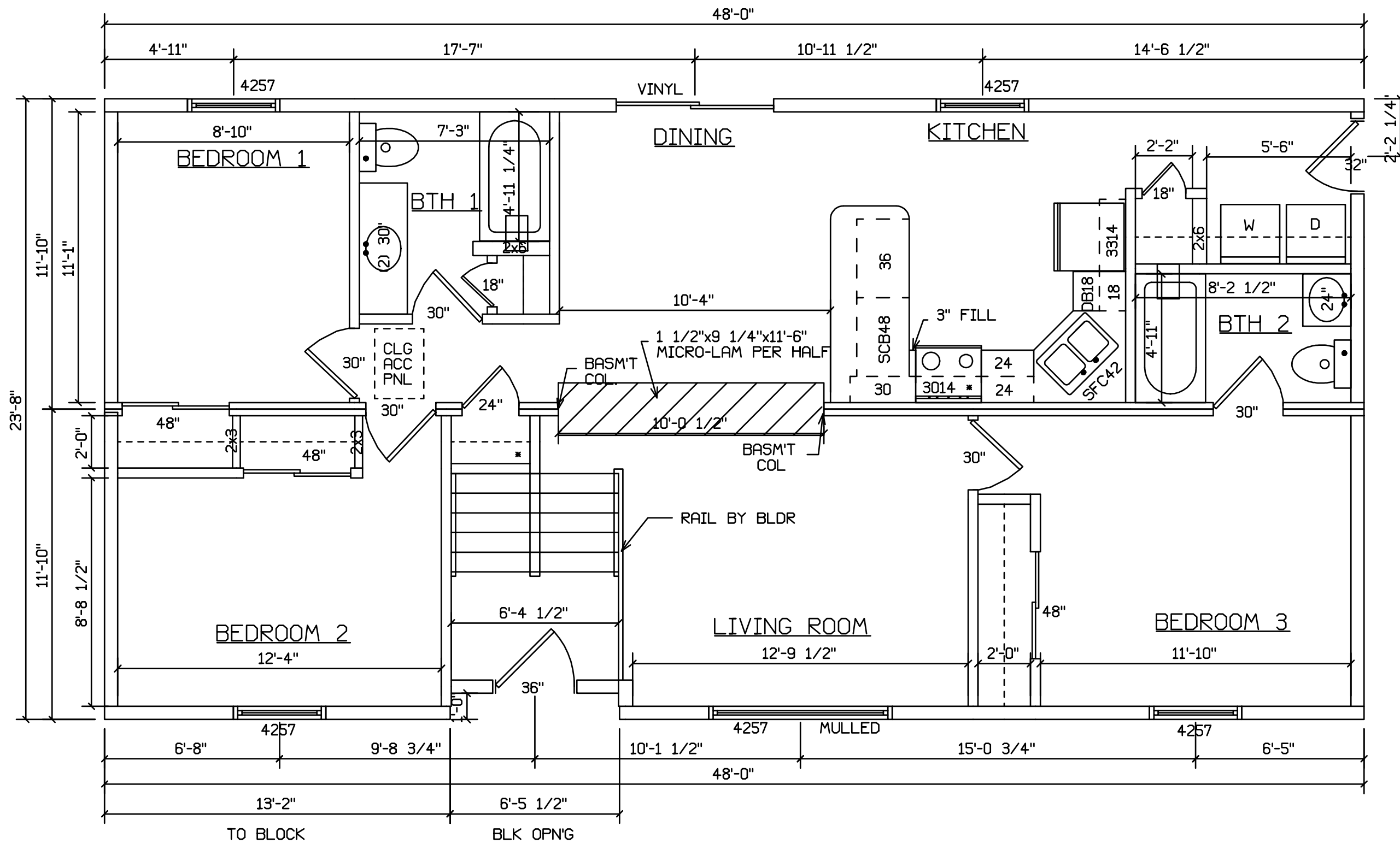
FINISH, WINDOWS, SHUTTERS, AND
STOOP BY BLDR ON SITE

SITE LOCATION

INSTALLATION OF INSULATION
AND SOFFIT MATERIAL ON CANTILEVER
BY BUILDER ON SITE

STAIRS DESIGNED TO 8 1/4" RISE
MAX., AND 9" TREAD MIN W/ 1 1/8" NOSING

| | | | | | |
|---------------------------|------|------------------|---|--|---------------|
| Bldr/DEVEL. AUTHORIZATION | DATE | # LABEL LOCATION | <i>Gregory J. Hayes</i> Production Engineer | SUPERIOR BUILDERS 1565 PA. RT. 442 E. MUNCY, PA. 17756 A DIVISION OF MUNCY HOMES, INC. | REV. |
| MANUF. AUTHORIZATION | DATE | CLG HGTH | PLANS HAVE BEEN EXTRACTED FROM APPROVED BLD'G SYSTEM DOCUMENTATION | | DATABASE 111a |
| | | DWN BY | DATE | SCALE | |
| | | FWP | 5-05-00 | 1/4"=1'-0" | 111 |
| | | | | BUILDER/CUSTOMER | |
| | | | | 24X44 GRAFTON | |



 HOLD BACK GYPBD 1'-0" PER SIDE IN OPEN AREAS

INSTALLATION OF INSULATION AND SOFFIT MATERIAL ON CANTILEVER BY BUILDER ON SITE

STAIRS DESIGNED TO 8 1/4" RISE MAX., AND 9" TREAD MIN W/ 1 1/8" NOSING

SITE LOCATION

| | | | | | | |
|---------------------------|------|------------------|---|--|-----------------------------|----------|
| BLDR/DEVEL. AUTHORIZATION | DATE | # LABEL LOCATION | <i>Gregory J. Hayes</i> Production Engineer | SUPERIOR BUILDERS 1565 PA. RT. 442 E. MUNCY, PA. 17756 A DIVISION OF MUNCY HOMES, INC. | REV. | |
| MANUF. AUTHORIZATION | DATE | CLG HGTH | PLANS HAVE BEEN EXTRACTED FROM APPROVED BLDG SYSTEM DOCUMENTATION | | BLDR / CUST | DATABASE |
| | | OWN BY | DATE | SCALE | | |
| | | FWP | 8-4-00 | 1/4"=1'-0" | 24x48 RAISED RANCH-CRANSTON | 6_118a_6 |