
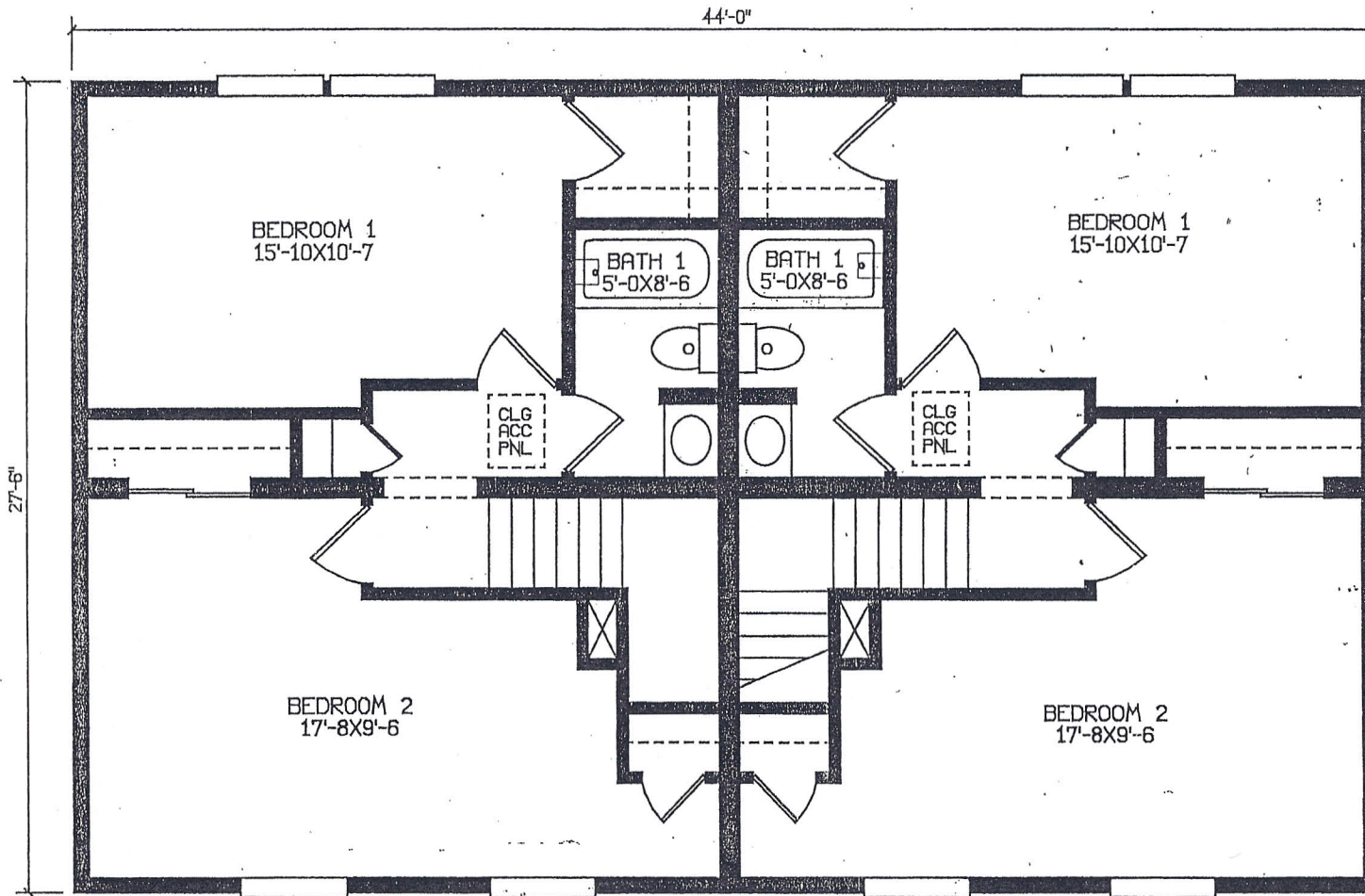


STAIRS DESIGNED TO 8 1/4" RISE
 MAX. AND 9" TREAD MIN W/ 1 1/8" NOSING

 HOLD BACK GYPBD 1'-0" PER
 SIDE IN OPEN AREAS

* LABELS		<i>Linda A. Litz</i> LINDA A. LITZ PRODUCTION ENGINEER	SUPERIOR BUILDERS P.O. BOX 344 RT. 448 MUNCY, PA. 17758 A DIVISION OF MUNCY HOMES INC.	REV
THIS PLAN IS DERIVED FROM MASTER SERIES BUILDING SYSTEM				DATE
BLDR/CUST. AUTHORIZATION		DATE	BLDR /CUST	PLAN NO.
CUSTOMER AUTHORIZATION		DATE	26/28X44 2 STORY DUPLEX	PLAN NO.
DATE	LITZ	DATE	12-24-01	SCALE 1/4"=1'-0"



BLDR./DEVEL. AUTHORIZATION		DATE	SUPERIOR BUILDERS P.O. BOX 344 RT. 142 HUNTSVILLE, PA 17133 A DIVISION OF MUNCY HOMES INC.		REV/A
BLDR. / CUST					DATABASE NAME 787
MANUF. AUTHORIZATION		DATE	26/28X44 2 STORY DUPLEX		PLAN NO.
DRAWN BY LITZ	DATE 12-24-01	SCALE 3/4"=1'-0"			DATE NO.