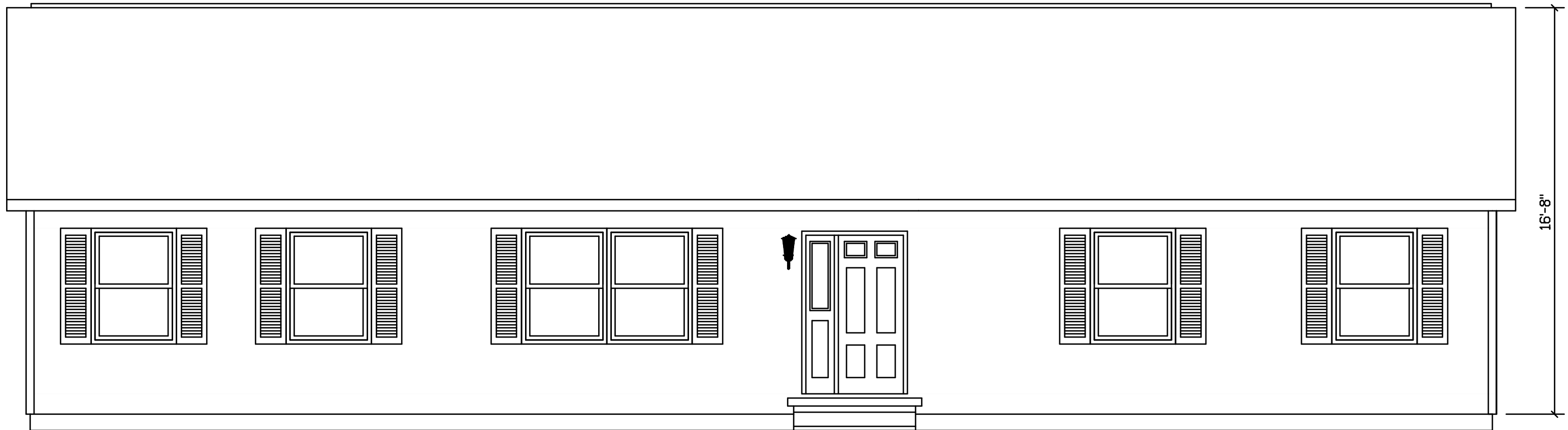


SCRANTON 389

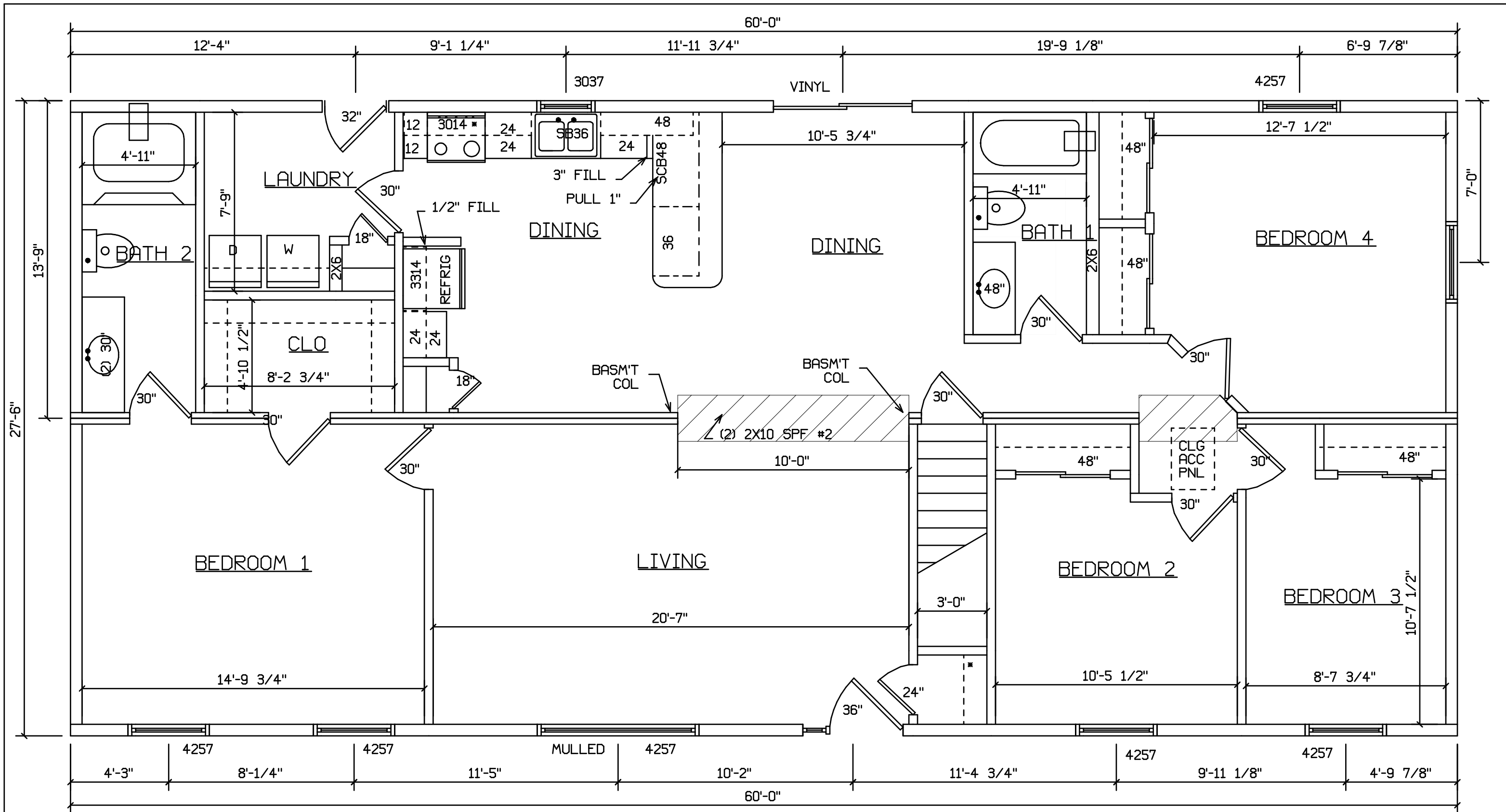


SITE LOCATION

 HOLD BACK GYPBD 1'-0" PER SIDE IN OPEN AREAS

STAIRS DESIGNED TO 8 1/4" RISE MAX., AND 9" TREAD MIN W/ 1 1/8" NOSING

| | | | | | |
|---------------------------|------|---|--|--|----------------------|
| BLDR/DEVEL. AUTHORIZATION | DATE | # LABEL LOCATION CLG HGTH | <i>Linda A. Litz</i> LINDA A. LITZ PRODUCTION ENGINEER | SUPERIOR BUILDERS 1565 PA. RT. 442 E. MUNCY, PA. 17756 A DIVISION OF MUNCY HOMES, INC. | REV. |
| MANUF. AUTHORIZATION | DATE | PLANS HAVE BEEN EXTRACTED FROM APPROVED BLDG SYSTEM DOCUMENTATION | | BLDR / CUST | DATABASE |
| | | DWN BY LITZ | DATE 8-28-99 | SCALE 1/4"=1'-0" | 28X60 SCRANTON RANCH |
| | | | | | 389a |
| | | | | | 13 |



SITE LOCATION

 HOLD BACK GYPBD 1'-0" PER SIDE IN OPEN AREAS

STAIRS DESIGNED TO 8 1/4" RISE MAX., AND 9" TREAD MIN W/ 1 1/8" NOSING

| | | | | | |
|---------------------------|------|------------------|--|--|---|
| BLDR/DEVEL. AUTHORIZATION | DATE | # LABEL LOCATION | <i>Linda A. Litz</i> LINDA A. LITZ PRODUCTION ENGINEER | SUPERIOR BUILDERS 1565 PA. RT. 442 E. MUNCY, PA. 17756 A DIVISION OF MUNCY HOMES, INC. | REV. |
| MANUF. AUTHORIZATION | DATE | CLG HGTH | | | PLANS HAVE BEEN EXTRACTED FROM APPROVED BLDG SYSTEM DOCUMENTATION |
| | | DWN BY | DATE | SCALE | DATABASE |
| | | LITZ | 8-28-99 | 1/4"=1'-0" | 389a |
| | | | | 28X60 SCRANTON RANCH | |