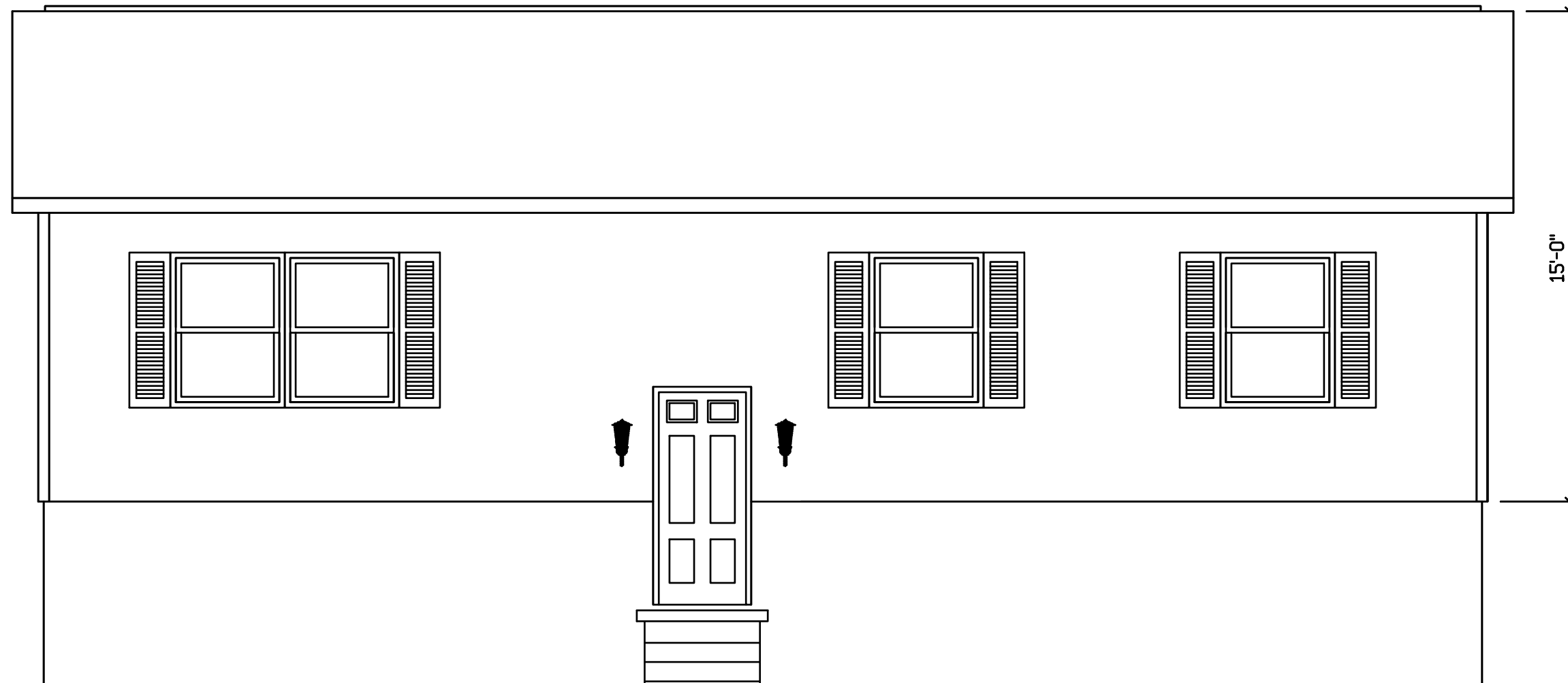


HERNDON - 217



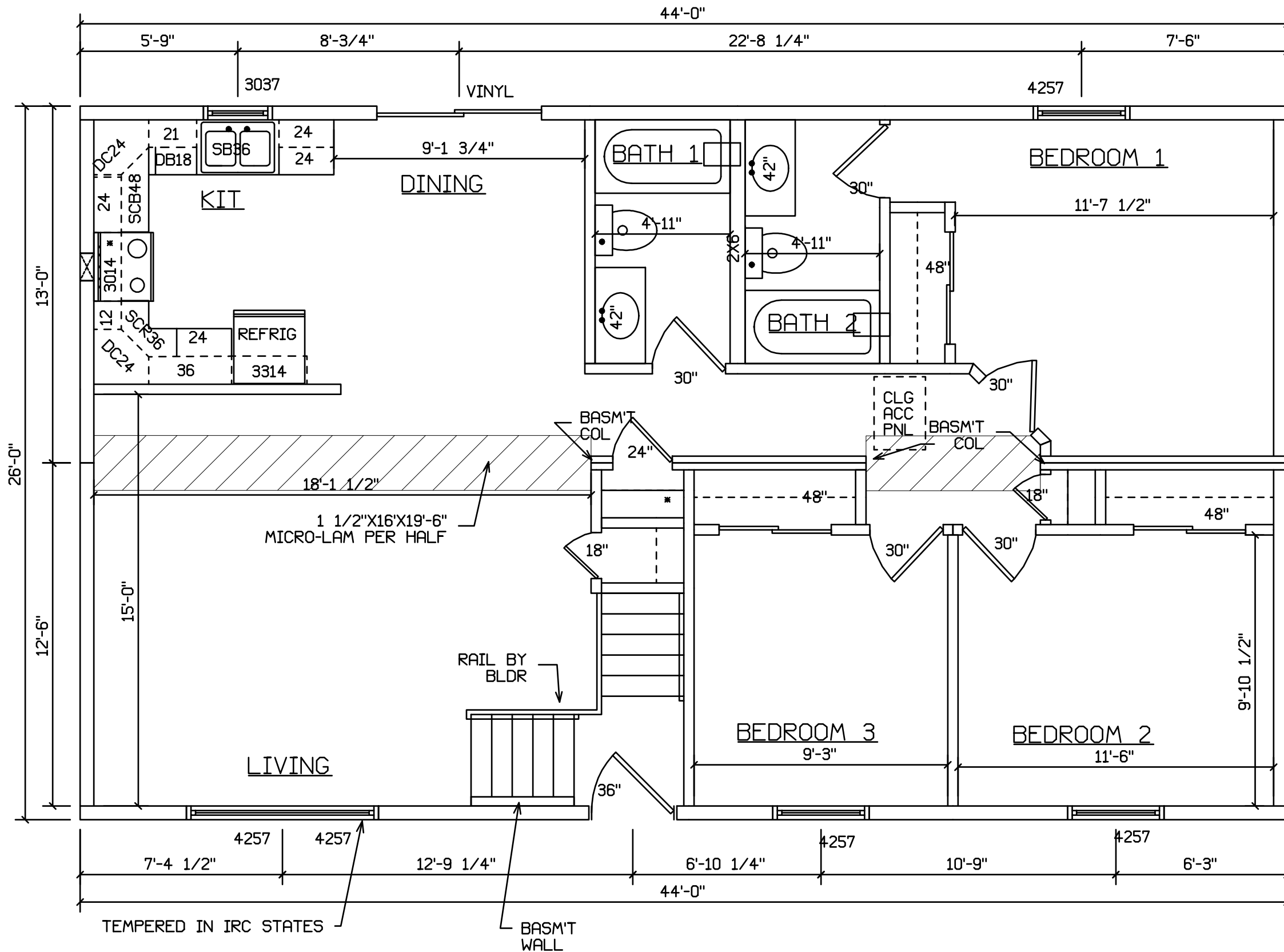
FINISH, WINDOWS, SHUTTERS, AND
STOOP BY BLDR ON SITE

SITE LOCATION

 HOLD BACK GYPBD 1'-0" PER
SIDE IN OPEN AREAS

STAIRS DESIGNED TO 8 1/4" RISE
MAX., AND 9" TREAD MIN W/ 1 1/8" NOSING

BLDR/DEVEL. AUTHORIZATION	DATE	# LABEL LOCATION CLG HGTH	<i>Gregory J. Hylton</i> Production Engineer	SUPERIOR BUILDERS 1565 PA. RT. 442 E. MUNCY, PA. 17756 A DIVISION OF MUNCY HOMES, INC.	REV.
MANUF. AUTHORIZATION	DATE	PLANS HAVE BEEN EXTRACTED FROM APPROVED BLD'G SYSTEM DOCUMENTATION			BLDR / CUST
		DWN BY LITZ	DATE 8-5-99	SCALE 1/4"=1'-0"	26X44 RAISED RANCH HERDON



SITE LOCATION

 HOLD BACK GYPBD 1'-0" PER SIDE IN OPEN AREAS

STAIRS DESIGNED TO 8 1/4" RISE MAX., AND 9" TREAD MIN W/ 1 1/8" NOSING

BLDR/DEVEL. AUTHORIZATION	DATE	# LABEL LOCATION	<i>Gregory J. Hayes</i> Production Engineer	SUPERIOR BUILDERS 1565 PA. RT. 442 E. MUNCY, PA. 17756 A DIVISION OF MUNCY HOMES, INC.	REV.
MANUF. AUTHORIZATION	DATE	CLG HGTH	PLANS HAVE BEEN EXTRACTED FROM APPROVED BLDG SYSTEM DOCUMENTATION DWN BY LITZ DATE 8-5-99 SCALE 1/4"=1'-0"		BLDR / CUST 26X44 RAISED RANCH HERDON DATABASE 217a