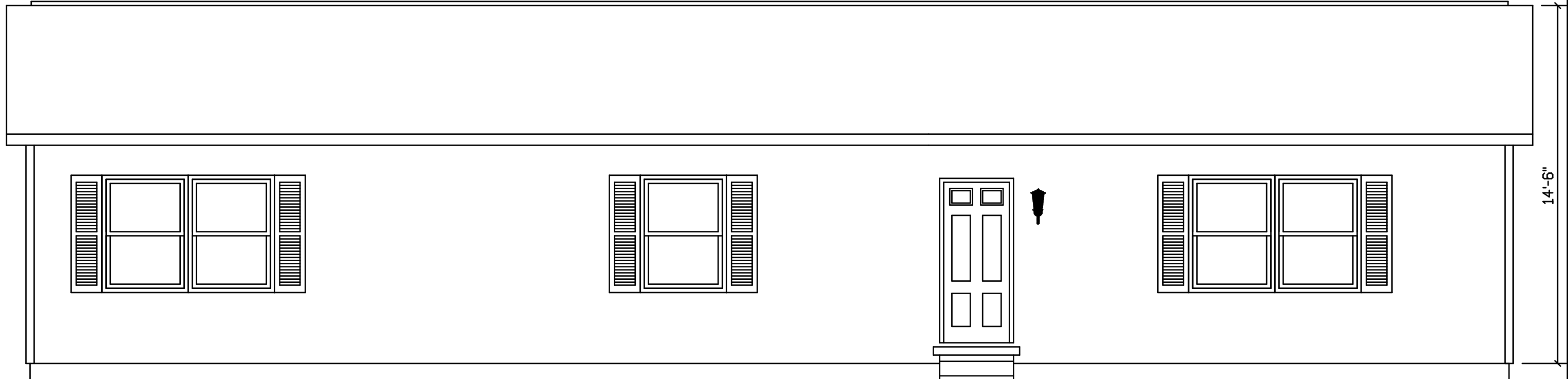


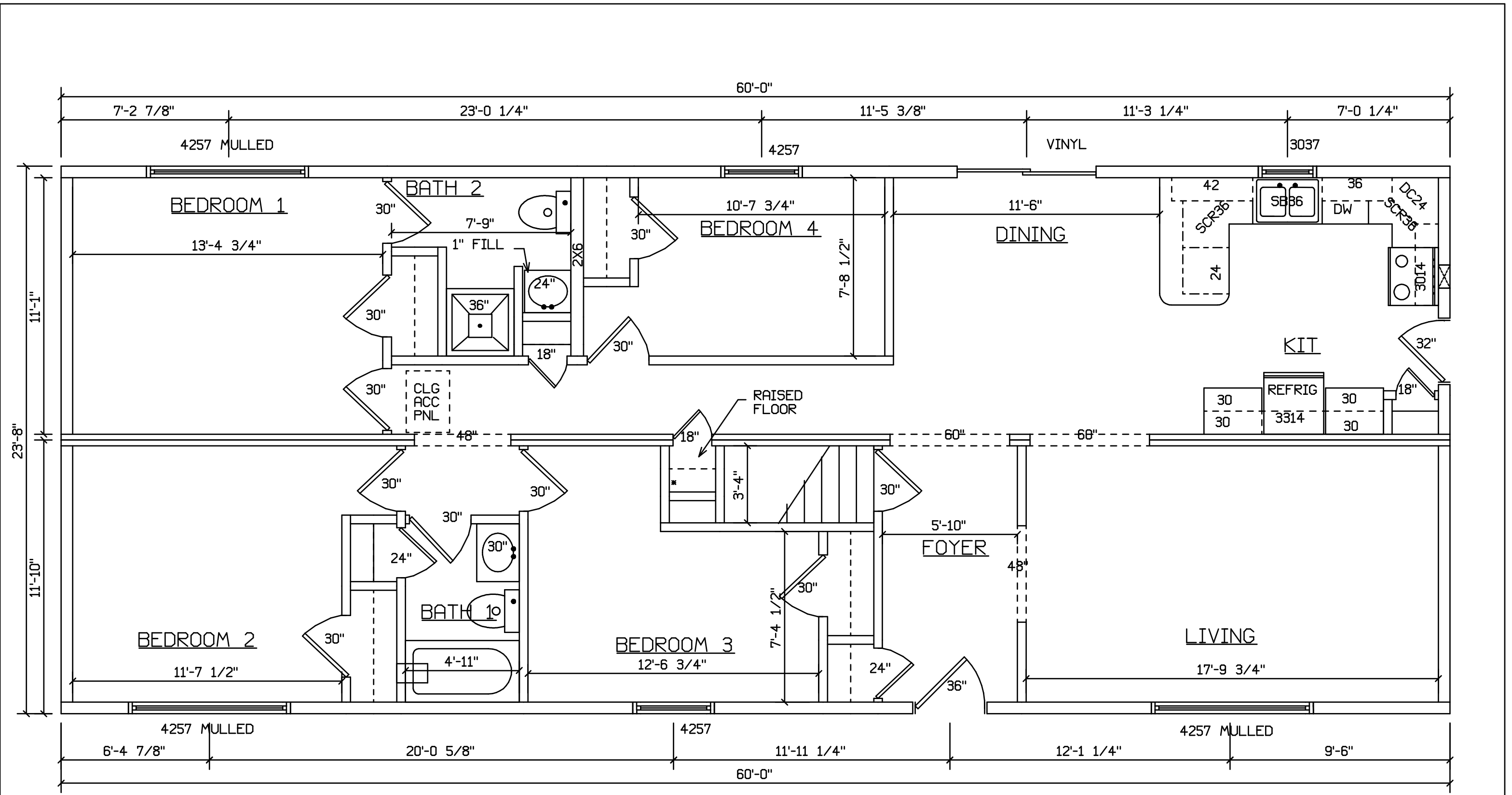
WYOMING 149



SITE LOCATION

STAIRS DESIGNED TO 8 1/4" RISE
MAX., AND 9" TREAD MIN W/ 1 1/8" NOSING

BLDR/DEVEL. AUTHORIZATION	DATE	# LABEL LOCATION CLG HGTH	<i>Linda A. Litz</i> LINDA A. LITZ PRODUCTION ENGINEER	SUPERIOR BUILDERS 1565 PA. RT. 442 E. MUNCY, PA. 17756 A DIVISION OF MUNCY HOMES, INC.	REV.
MANUF. AUTHORIZATION	DATE	THIS PLAN DERIVED FROM MASTER SERIES BUILDING SYSTEM		24 WIDE RANCH	DATABASE 149
		DWN BY LITZ	DATE 5-23-00	SCALE 1/4"=1'-0"	24X60 WYOMING RANCH



SITE LOCATION
FRANKLINVILLE, N.J.

STAIRS DESIGNED TO 8 1/4" RISE
MAX., AND 9" TREAD MIN W/ 1 1/8" NOSING

BLDR/DEVEL. AUTHORIZATION	DATE	# LABEL LOCATION CLG HGTH	<i>Gregory J. Hayes</i> Production Engineer	SUPERIOR BUILDERS 1565 PA. RT. 442 E. MUNCY, PA. 17756 A DIVISION OF MUNCY HOMES, INC.	REV.
MANUF. AUTHORIZATION	DATE	PLANS HAVE BEEN EXTRACTED FROM APPROVED BLDG SYSTEM DOCUMENTATION	SCALE 1/4"=1'-0"		12-17-04
			DWN BY LITZ	DATE 5-23-00	DATABASE 149
				24X60 WYOMING RANCH	