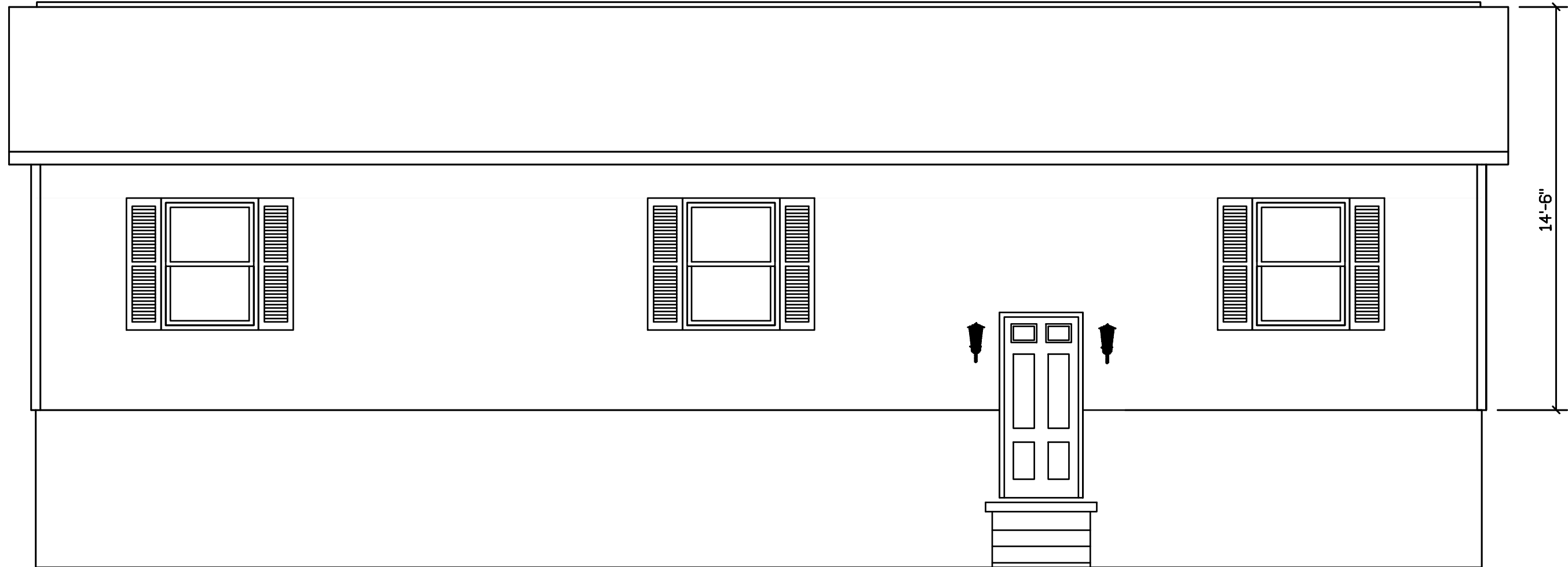


SHILOH - 119

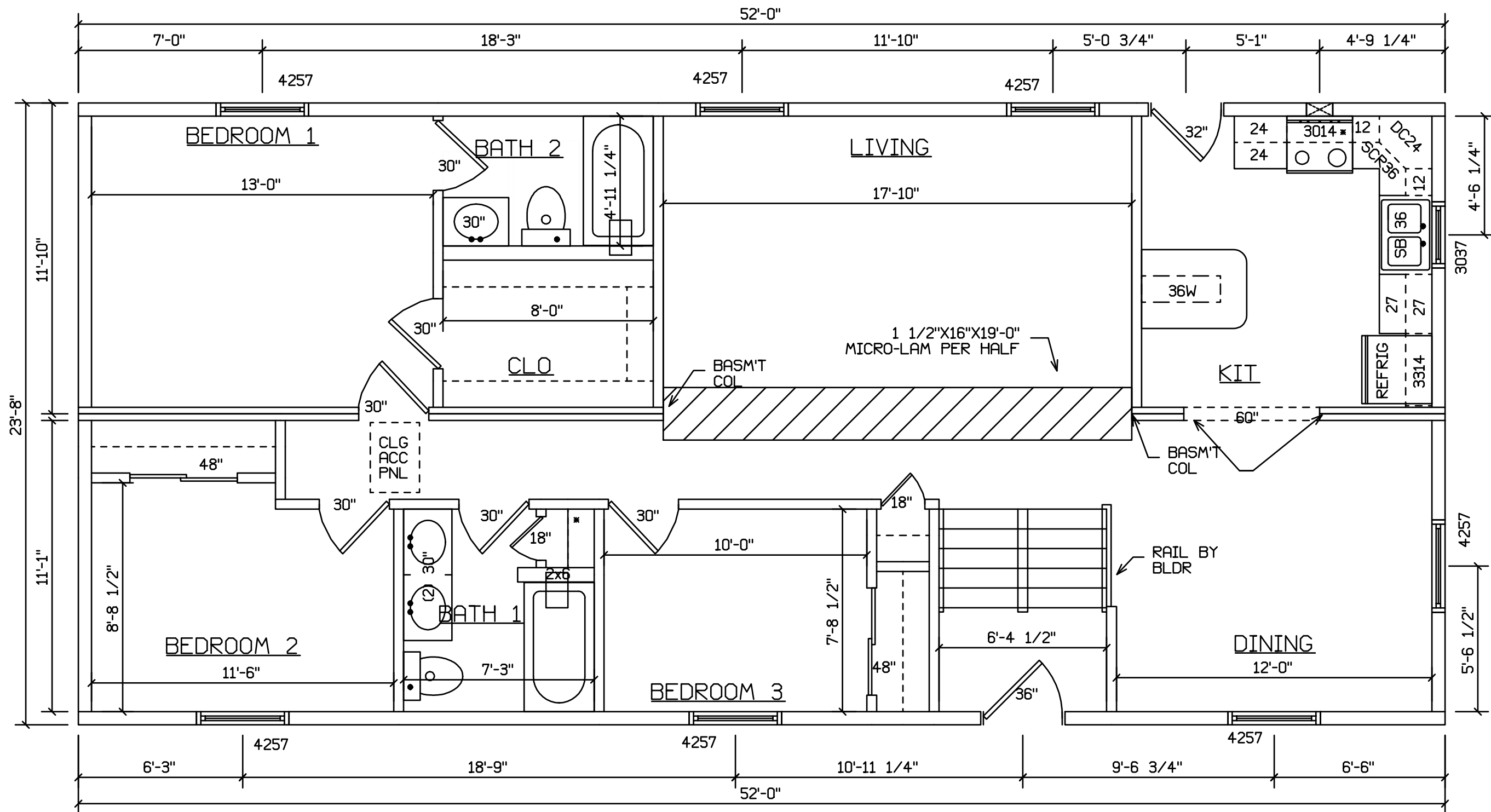


FINISH, WINDOWS, SHUTTERS, AND
STOOP BY BLDR ON SITE

SITE LOCATION

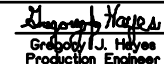
 HOLD BACK GYPBD 1'-0" PER
SIDE IN OPEN AREAS
STAIRS DESIGNED TO 8 1/4" RISE
MAX., AND 9" TREAD MIN W/ 1 1/8" NOSING

BLDR/DEVEL. AUTHORIZATION	DATE	# LABEL LOCATION CLG HGTH	<i>Gregory J. Hayes</i> Production Engineer	SUPERIOR BUILDERS 1565 PA. RT. 442 E. MUNCY, PA. 17756 A DIVISION OF MUNCY HOMES, INC.	REV.
MANUF. AUTHORIZATION	DATE	PLANS HAVE BEEN EXTRACTED FROM APPROVED BLDG SYSTEM DOCUMENTATION			5-03-01
		DWN BY	DATE	SCALE	DATABASE
			4-10-00	1/4"=1'-0"	119a
				BLDR / CUST	
				24X52 RAISED RANCH SHILOH	



SITE LOCATION

 HOLD BACK GYPBD 1'-0" PER SIDE IN OPEN AREAS
 STAIRS DESIGNED TO 8 1/4" RISE MAX., AND 9" TREAD MIN W/ 1 1/8" NOSING

BLDR/DEVEL. AUTHORIZATION	DATE	# LABEL LOCATION	CLG HGTH	 Gregory J. Hayes Production Engineer	SUPERIOR BUILDERS 1565 PA. RT. 442 E. MUNCY, PA. 17756 A DIVISION OF MUNCY HOMES, INC. BLDR / CUST 24X52 RAISED RANCH SHILOH	REV.
MANUF. AUTHORIZATION	DATE	PLANS HAVE BEEN EXTRACTED FROM APPROVED BLDG SYSTEM DOCUMENTATION	DWN BY	SCALE		5-03-01
			4-10-00	1/4"=1'-0"		DATABASE 119a