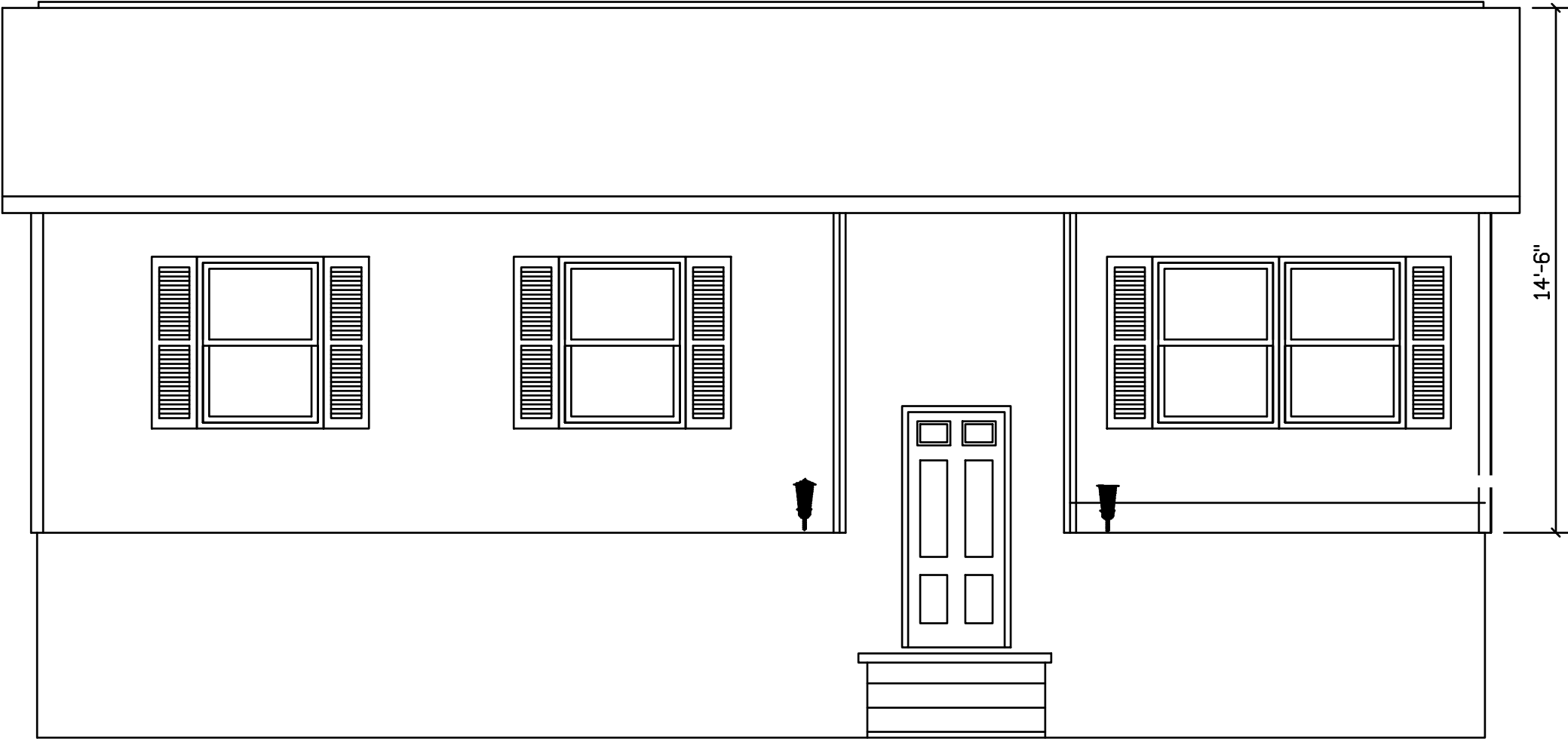


HANOVER - 106



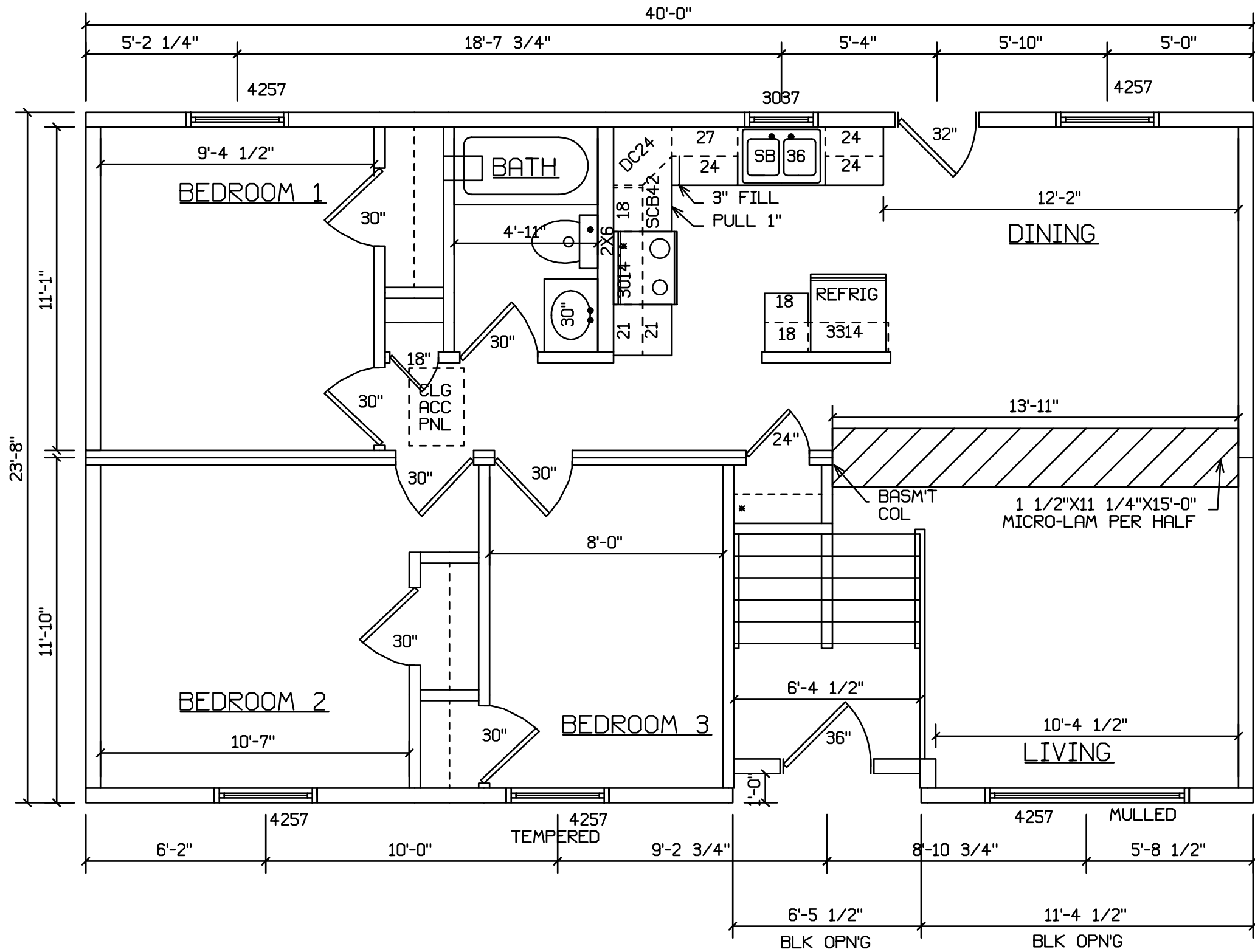
FINISH, WINDOWS, SHUTTERS, AND
STOOP BY BLDR ON SITE

SITE LOCATION

INSTALLATION OF INSULATION
AND SOFFIT MATERIAL ON CANTILEVER
BY BUILDER ON SITE

STAIRS DESIGNED TO 8 1/4" RISE
MAX., AND 9" TREAD MIN W/ 1 1/8" NOSING

BLDR/DEVEL. AUTHORIZATION	DATE	# LABEL LOCATION CLG HGTH	<i>M. J. Hayes</i> Production Engineer	SUPERIOR BUILDERS 1565 PA. RT. 442 E. MUNCY, PA. 17756 A DIVISION OF MUNCY HOMES, INC.	REV. GJH3/12/03
MANUF. AUTHORIZATION	DATE	PLANS HAVE BEEN EXTRACTED FROM APPROVED BLD'G SYSTEM DOCUMENTATION		BLDR / CUSTOM	DATABASE 106a
	DWN BY LITZ	DATE	SCALE 1/4"=1'-0"	24X40 RAISED RANCH HANOVER	FRONT



SITE LOCATION

BLDR/DEVEL. AUTHORIZATION	DATE	# LABEL LOCATION	CLG HGTH	<i>Gregory J. Hayes</i> Production Engineer	SUPERIOR BUILDERS 1565 PA. RT. 442 E. MUNCY, PA. 17756 A DIVISION OF MUNCY HOMES, INC.	REV.
MANUF. AUTHORIZATION	DATE	PLANS HAVE BEEN EXTRACTED FROM APPROVED BLDG SYSTEM DOCUMENTATION	OWN BY	DATE		SCALE
			LITZ	03-15-00	1/4"=1'-0"	106a
					BLDR / CUSTOM	24X40 RAISED RANCH HANOVER