

D&G COLONIALS

If you need ready-to-move-in living space, you can't beat the value of a colonial; it has a factory finished second floor. We have many floor plans, from a very affordable 3-bedroom, 1-bath, 1325-sqft home to a 4-bedroom 2½-bath, 2860-sqft home. And, from the outside, a colonial has a stately appearance rising high off the ground proudly showing its two rows of windows and its gently sloping roof. We offer many options; you can customize your colonial by adding a quaint front porch, a covered entry, or a garage.

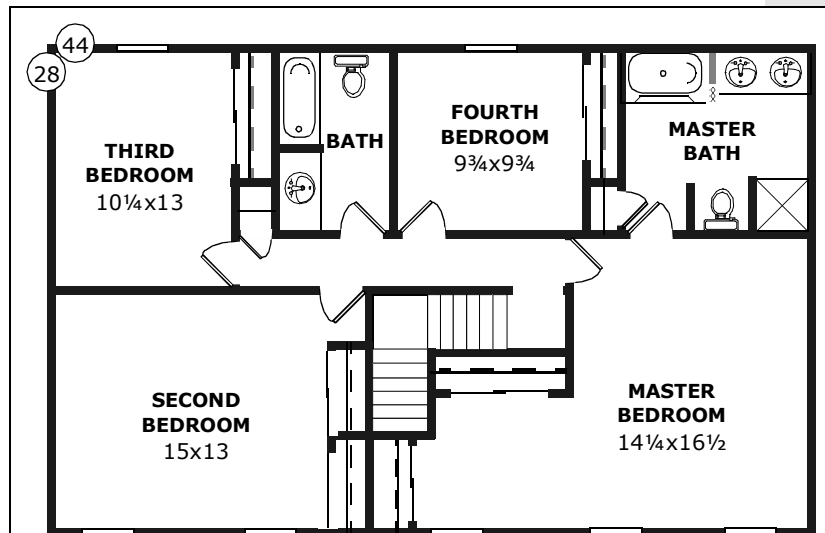


And remember **D&G** will find a way to meet your needs if you have other special requirements.

As a representative example of the many colonials available, check the LENOX out and, if the LENOX doesn't do it for you, browse through the other colonial floor plans on the following pages.

If you need a larger colonial, see the Elegant-Series floor plans starting on page 76.

If you want a colonial, **D&G** has it.



THE LENOX

Plenty of space for parents and children.

D&G Colonial

Model Number: SN-140

Size (1st Flr): 28x44

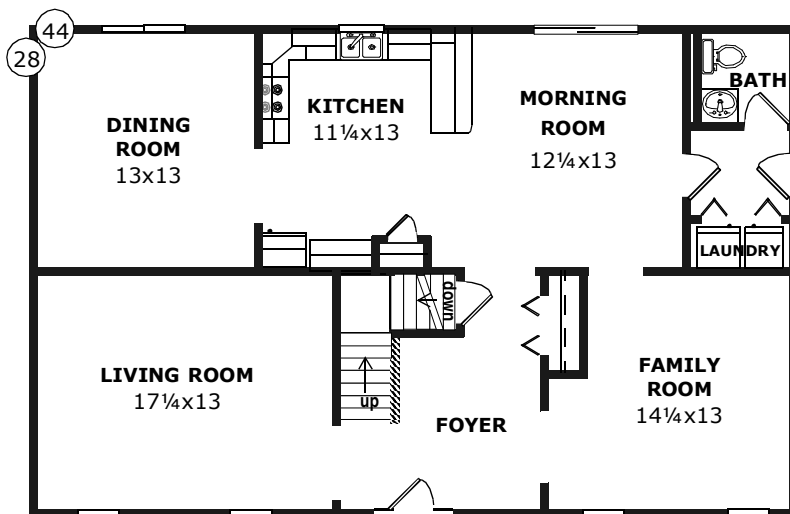
Size (2nd Flr): 28x44

Sqft: 2420

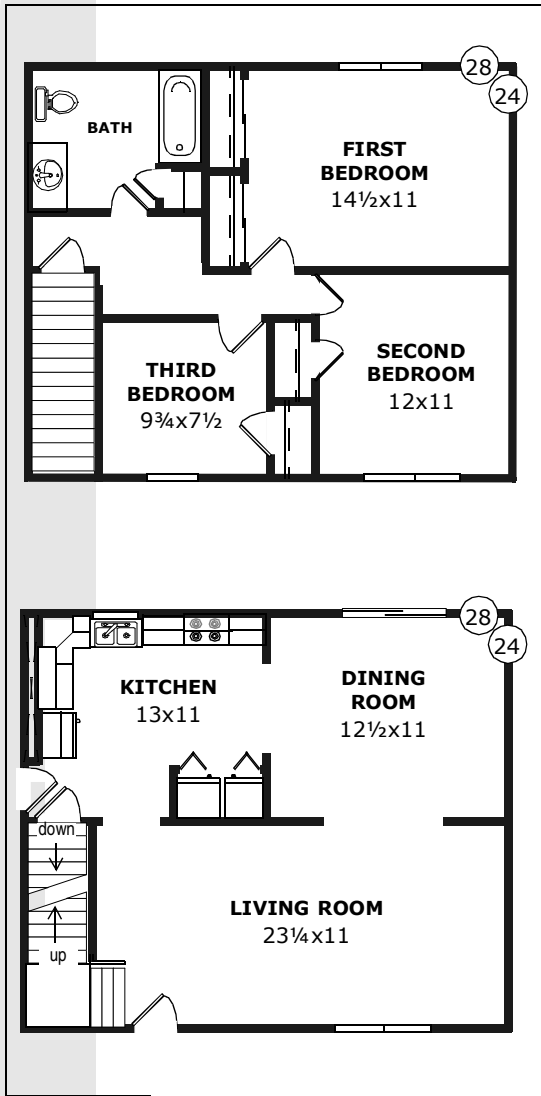
Rooms: 9

Bedrooms: 4

Baths: 2½



COLONIAL

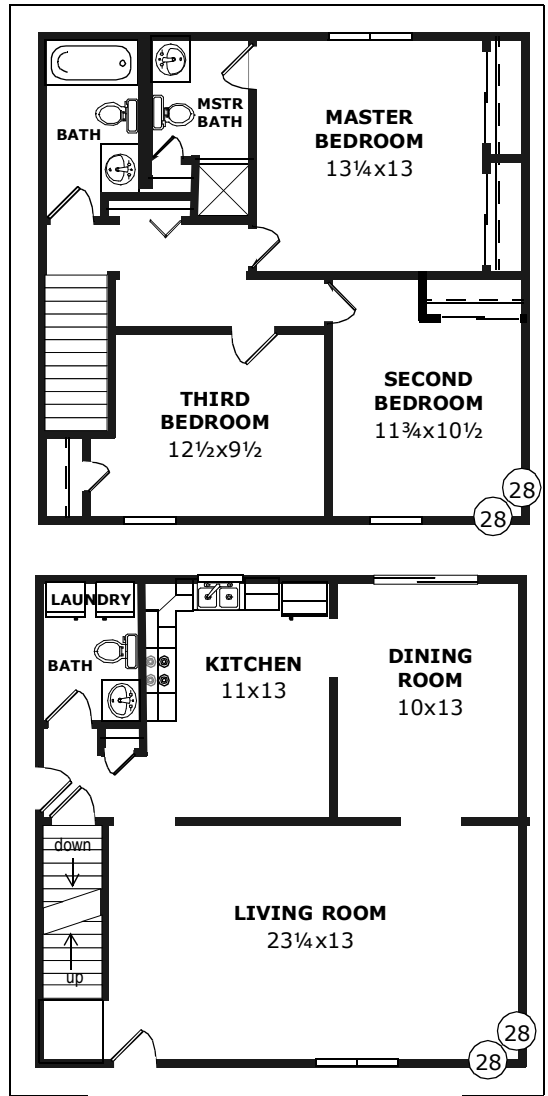


THE BEDFORD

Lots of living space in a small footprint and even a first-floor laundry.



Model Number: SN-130
 Size (1st Flr): 24x28
 Size (2nd Flr): 24x28
 Sqft: 1325
 Rooms: 6
 Bedrooms: 3
 Baths: 1

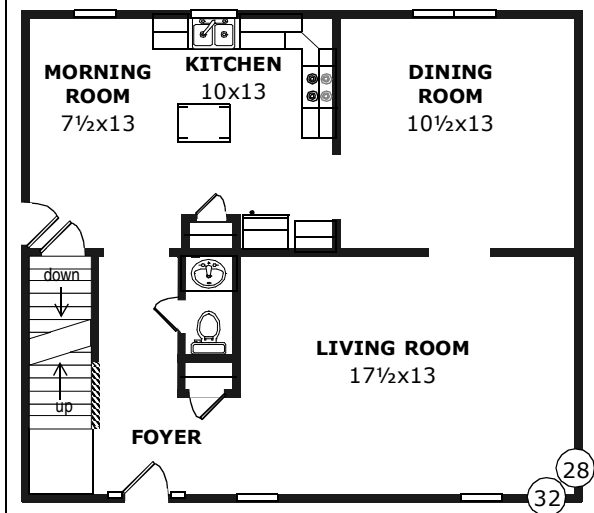
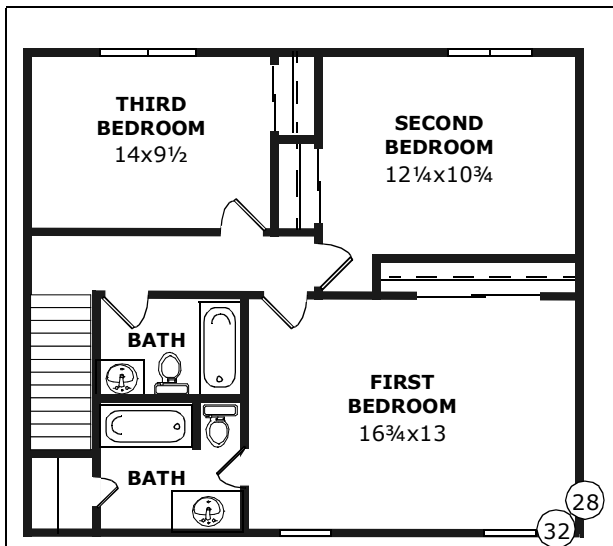


THE BERKSHIRE

Two baths up and one down and you don't need a big lot.



Model Number: SN-131
 Size (1st Flr): 28x28
 Size (2nd Flr): 28x28
 Sqft: 1540
 Rooms: 6
 Bedrooms: 3
 Baths: 1 3/4 + 1/2



THE BRENTWOOD

Formality is the theme for this home including a welcoming foyer, an entry hall and a large living room.

D&G Colonial

Model Number: SN-132

Size (1st Flr): 28x32

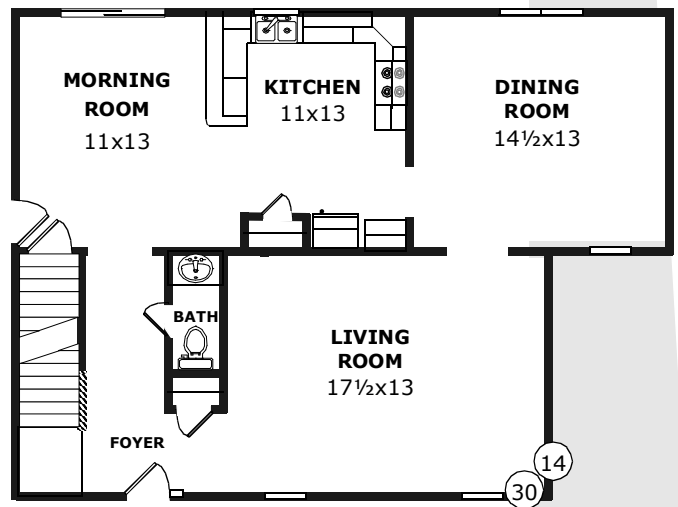
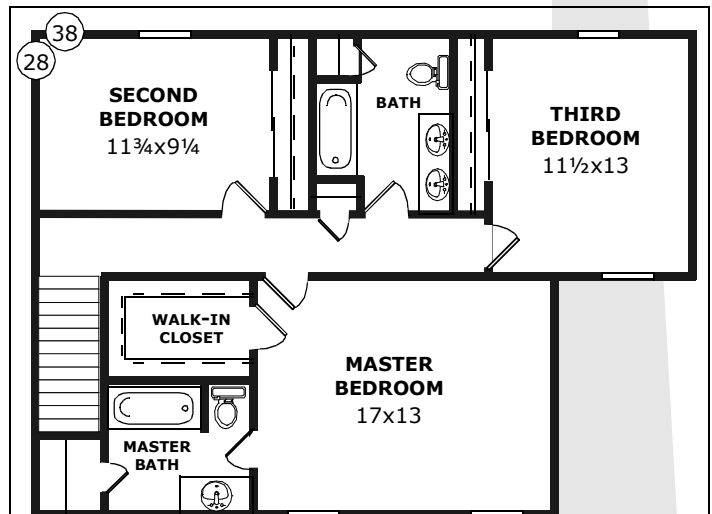
Size (2nd Flr): 28x32

Sqft: 1760

Rooms: 7

Bedrooms: 3

Baths: 2 1/2



THE CAMBRIDGE

If you like daylight, add gable-end windows to the dining room and third bedroom!

D&G Colonial

Model Number: SN-133

Size (1st Flr): 28x38/30

Size (2nd Flr): 28x38/30

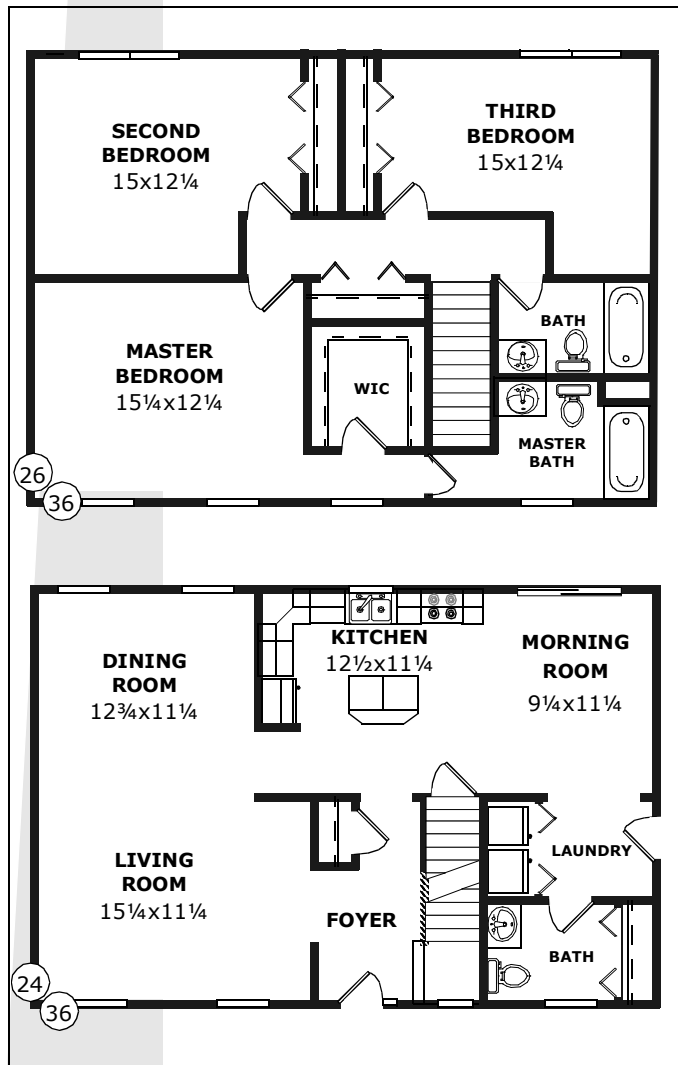
Sqft: 1870

Rooms: 7

Bedrooms: 3

Baths: 2 1/2

COLONIAL

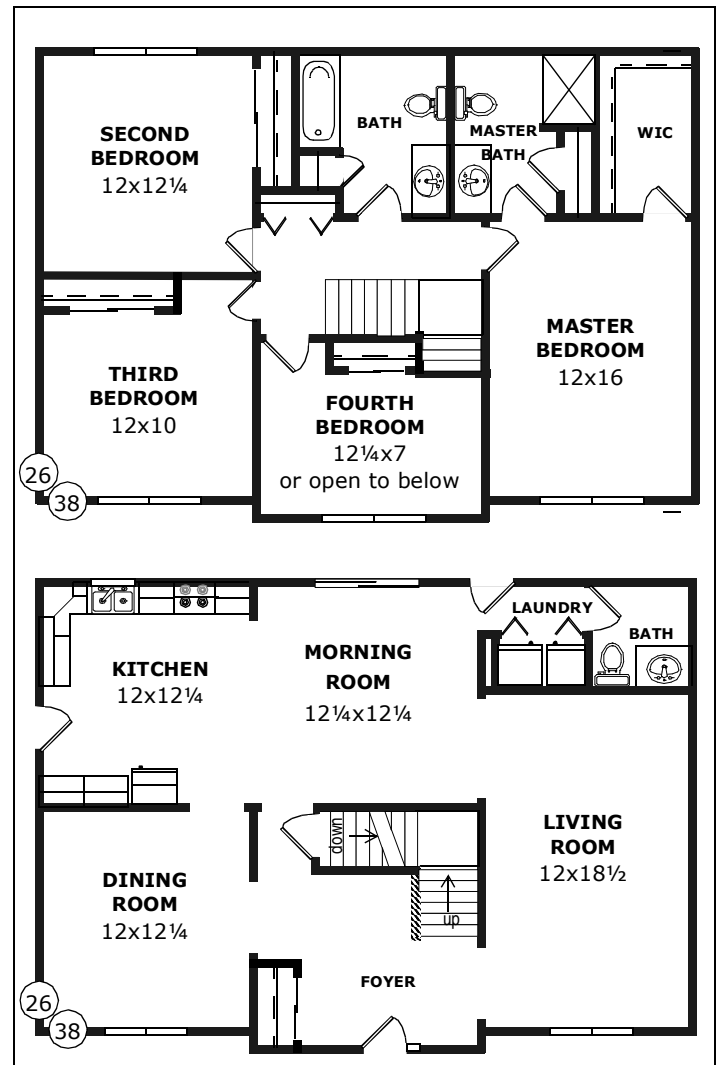


THE FAVERSHAM

Formal and informal spaces nicely separated.

D&G Colonial

- Model Number: SN-147
- Size (1st Flr): 24x36
- Size (2nd Flr): 26x36
- Sqft: 1800
- Rooms: 7
- Bedrooms: 3
- Baths: 2 1/2

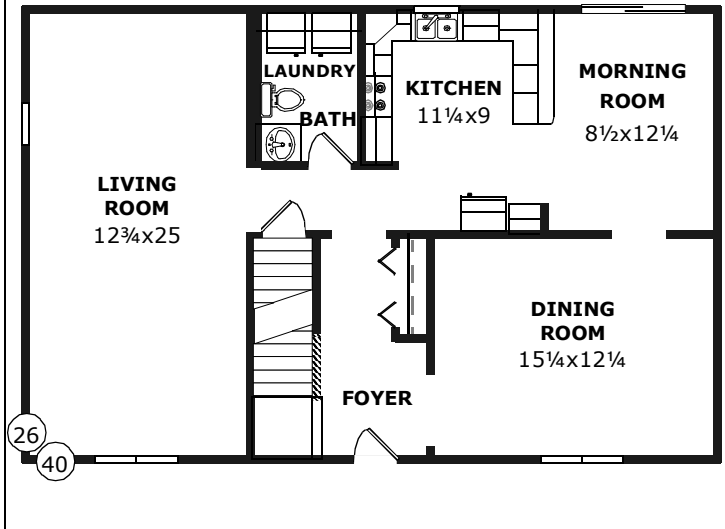
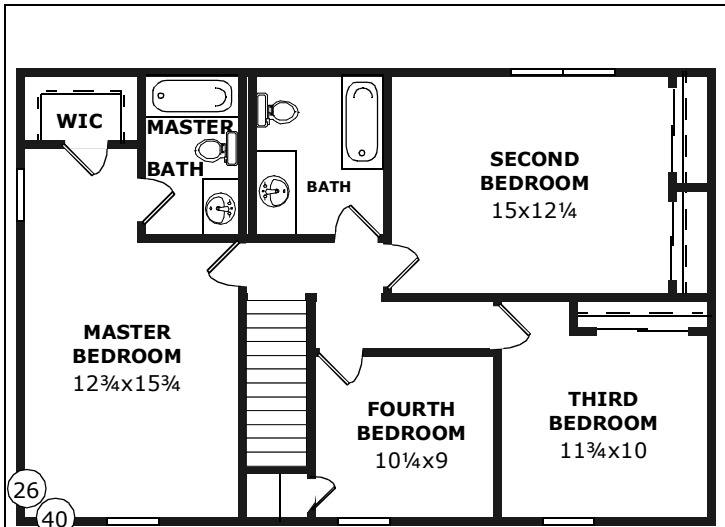


THE CRESTMONT

Interesting facade and optional two-story foyer.

D&G Colonial

- Model Number: SN-134
- Size (1st Flr): 26x38
- Size (2nd Flr): 26x38
- Sqft: 1976
- Rooms: 8
- Bedrooms: 4
- Baths: 1 3/4 + 1/2

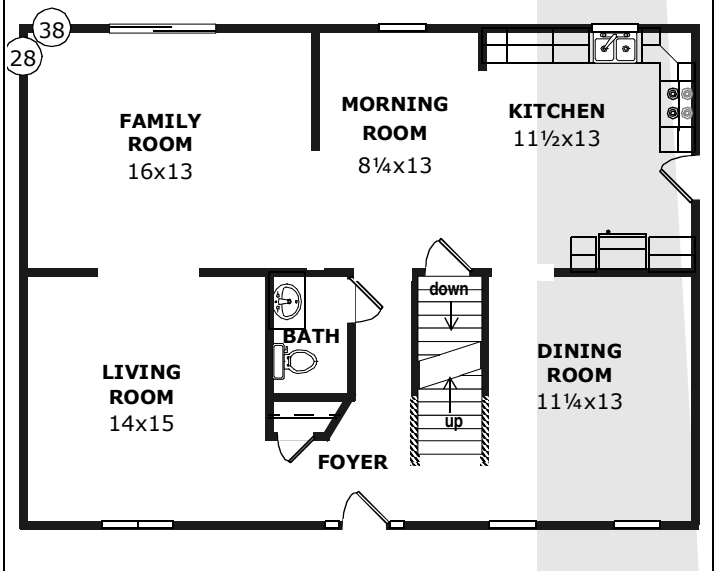
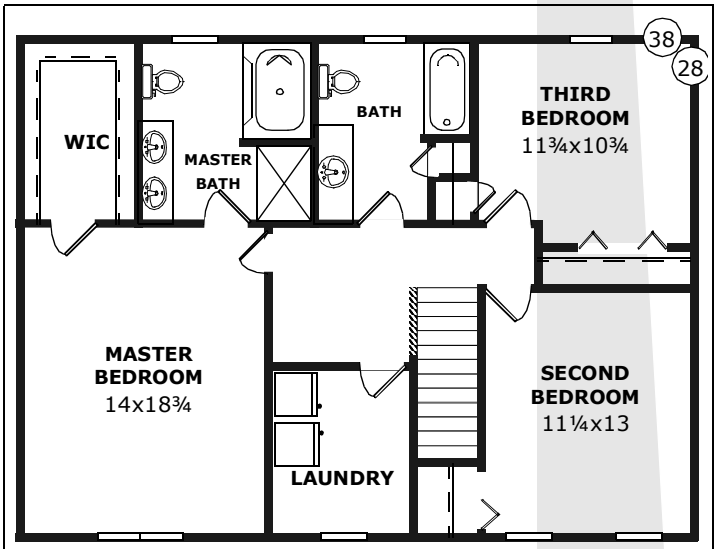


THE GETTYSBURG

A front-to-back living room down and a front-to-back master suite up.



- Model Number: SN-135
- Size (1st Flr): 26x40
- Size (2nd Flr): 26x40
- Sqft: 2080
- Rooms: 8
- Bedrooms: 4
- Baths: 2 1/2



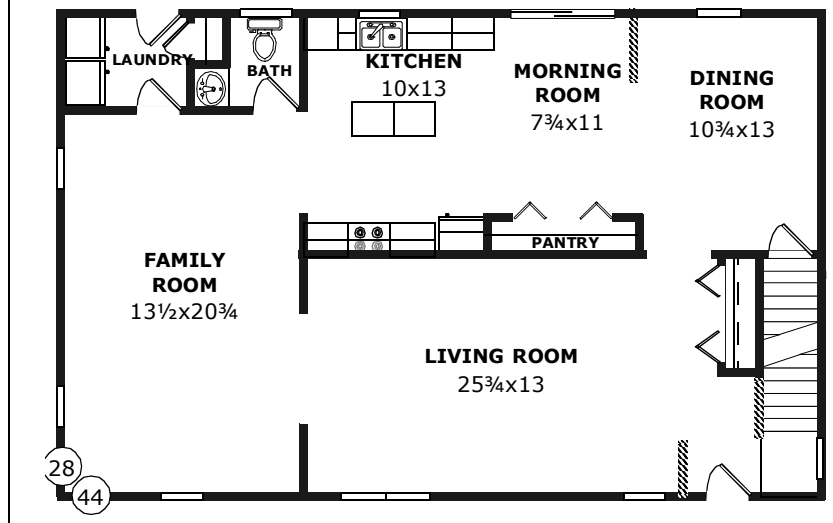
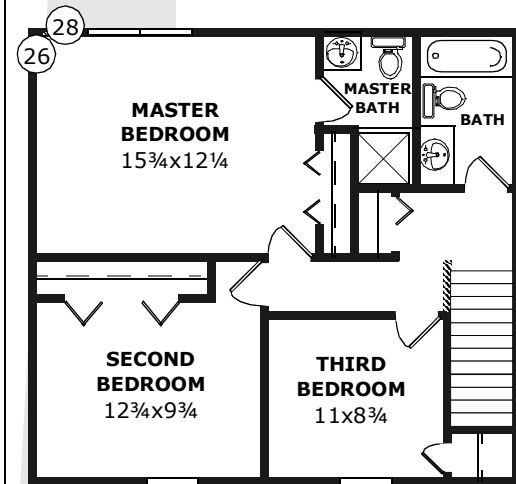
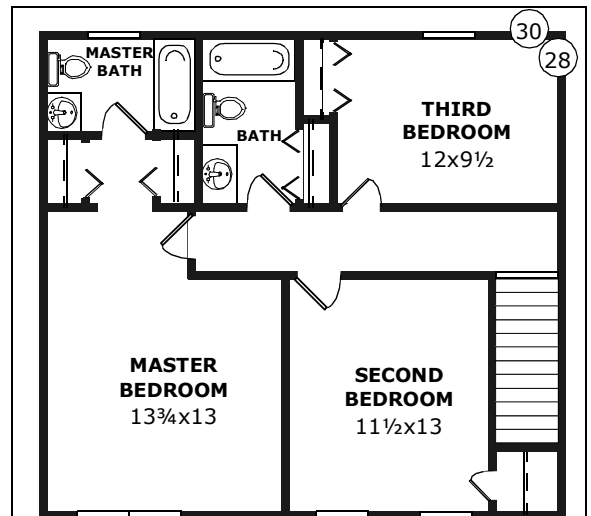
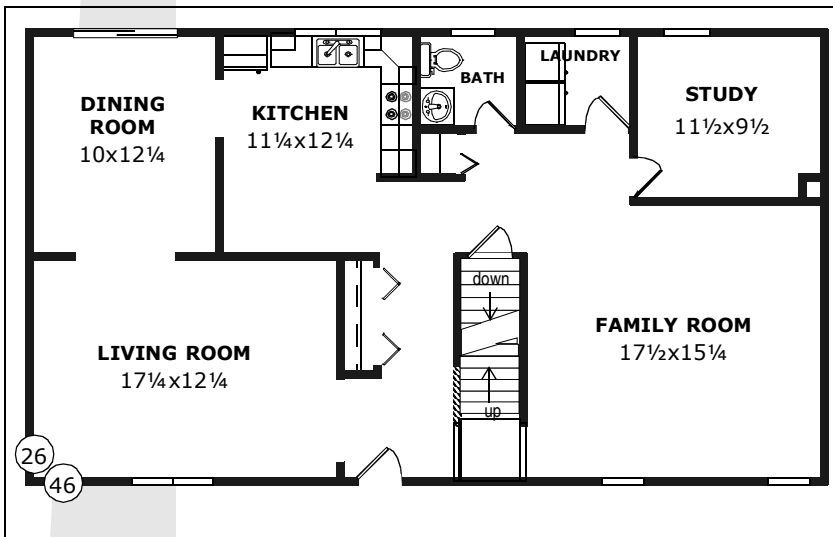
THE WESTPORT

Every room in this three-bedroom plan is spacious. Even the laundry is large.



- Model Number: SN-149
- Size (1st Flr): 28x38
- Size (2nd Flr): 28x38
- Sqft: 2128
- Rooms: 8
- Bedrooms: 3
- Baths: 2 1/2

COLONIAL



THE ADWICK

Gable-end windows or skylights could really do wonders for this nice three-bedroom plan.



Model Number: SN-137

Size (1st Flr): 26x46

Size (2nd Flr): 26x28

Sqft: 1924

Rooms: 8

Bedrooms: 3

Baths: 1 3/4 + 1/2

THE JAMESTOWN

Another fine three-bedroom plan with a cheerful family room and a large living room.



Model Number: SN-138

Size (1st Flr): 28x44

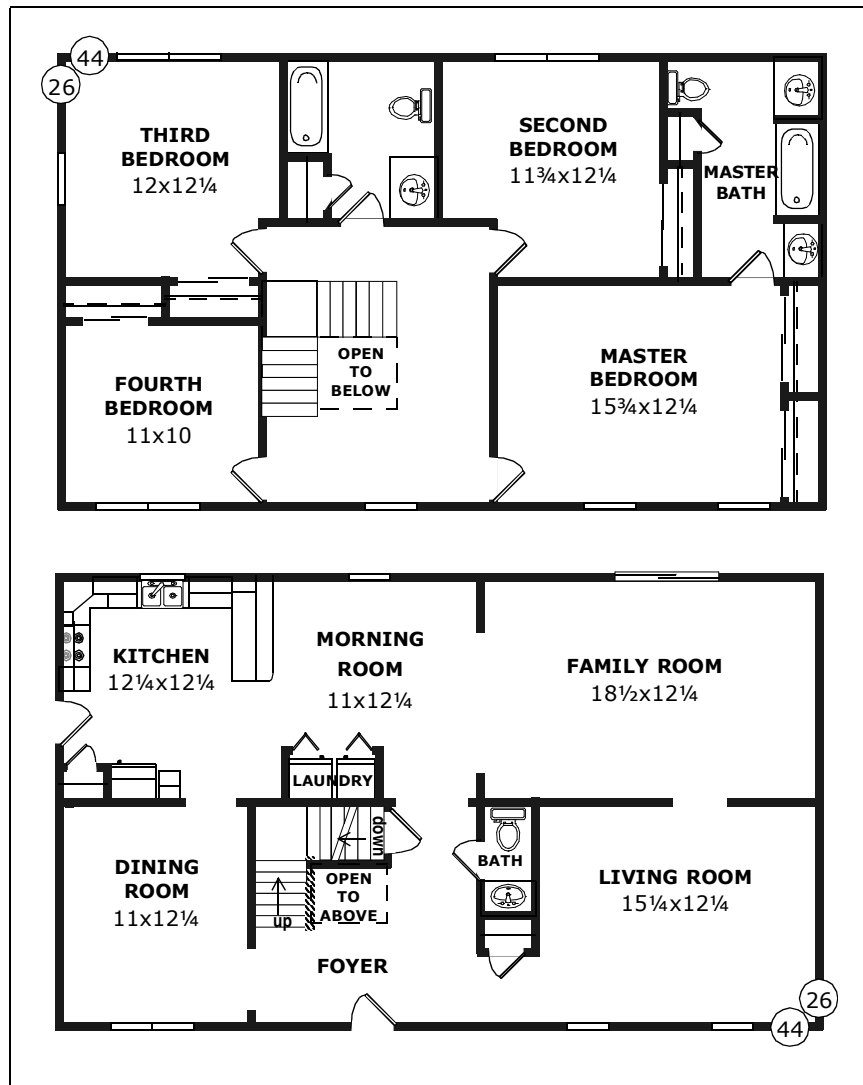
Size (2nd Flr): 28x30

Sqft: 2072

Rooms: 8

Bedrooms: 3

Baths: 2 1/2



THE HAMPTON

A very convenient layout with a corner kitchen, a well situated laundry and four comfortable bedrooms.



Model Number: SN-136

Size (1st Flr): 26x44

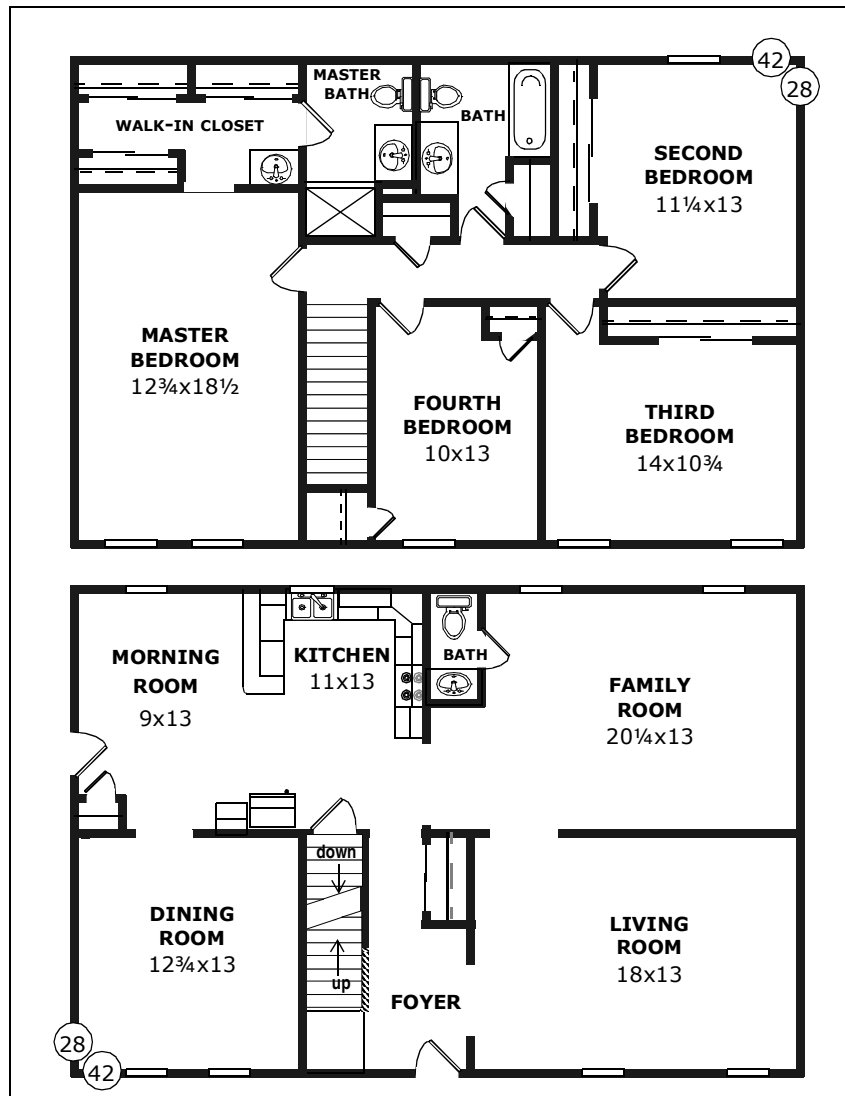
Size (2nd Flr): 26x44

Sqft: 2288

Rooms: 9

Bedrooms: 4

Baths: 2 1/2



THE LANCASTER

A couple of sliding doors leading to a deck or patio off the family room would be mighty nice!



Model Number: SN-139

Size (1st Flr): 28x42

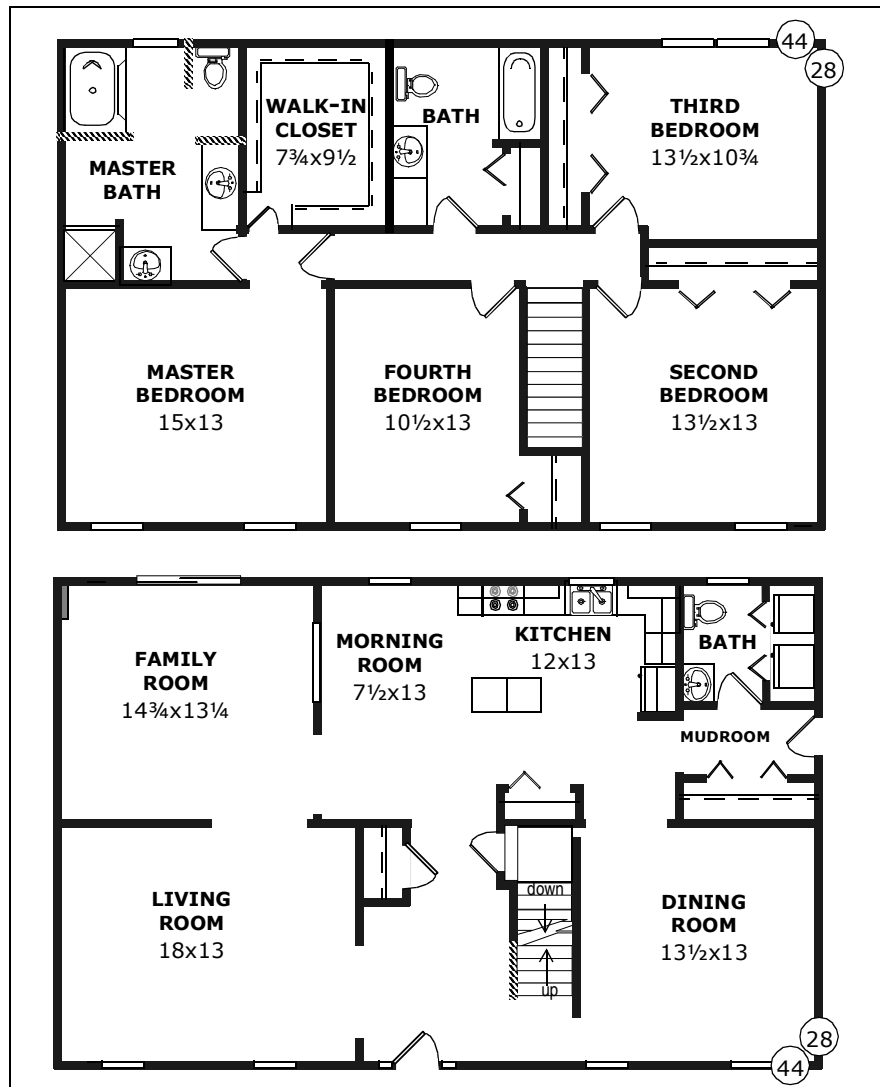
Size (2nd Flr): 28x42

Sqft: 2310

Rooms: 9

Bedrooms: 4

Baths: 1 3/4 + 1/2



THE LEXINGTON

A luxurious master suite, three other bedrooms and a great first-floor plan.



Model Number: SN-141

Size (1st Flr): 28x44

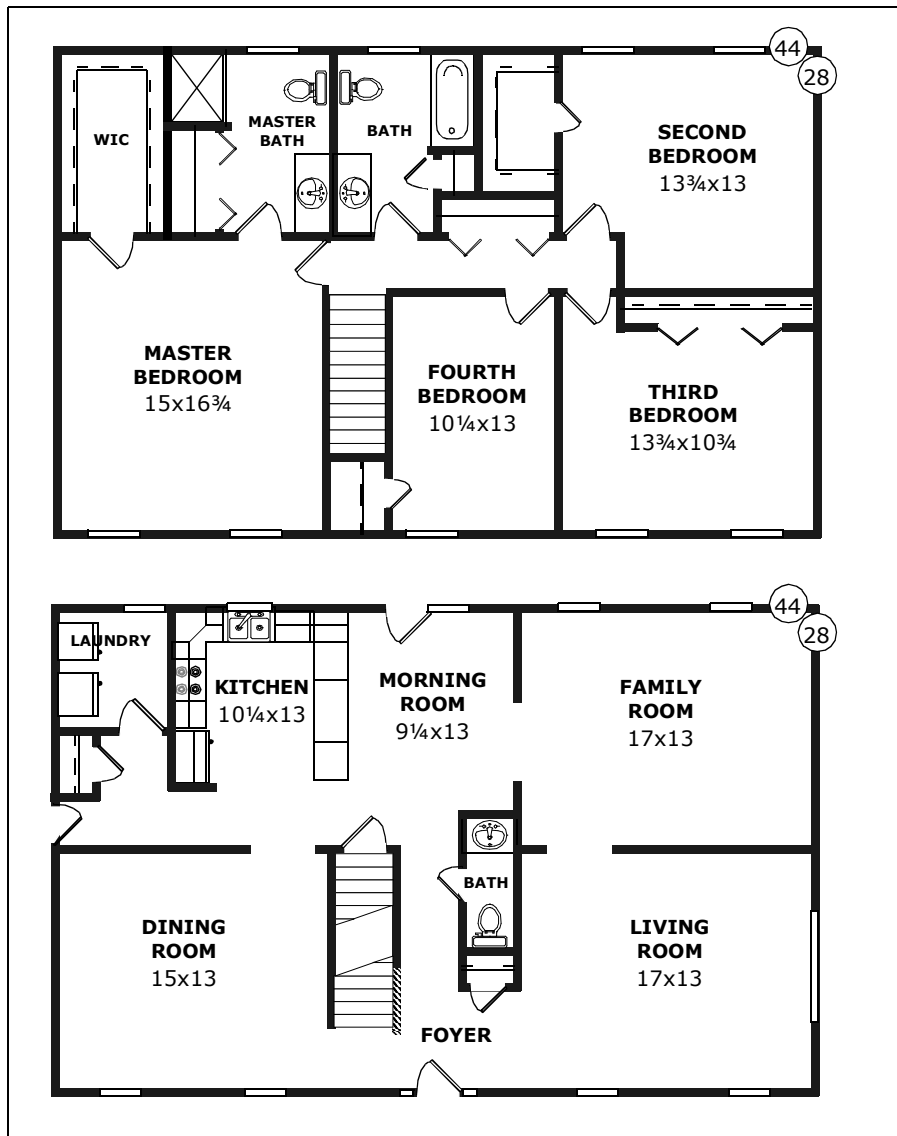
Size (2nd Flr): 28x44

Sqft: 2464

Rooms: 9

Bedrooms: 4

Baths: 2 1/2



THE RICHMOND

A lovely home; a deck and sliders off the family room would be just super.



Model Number: SN-142

Size (1st Flr): 28x44

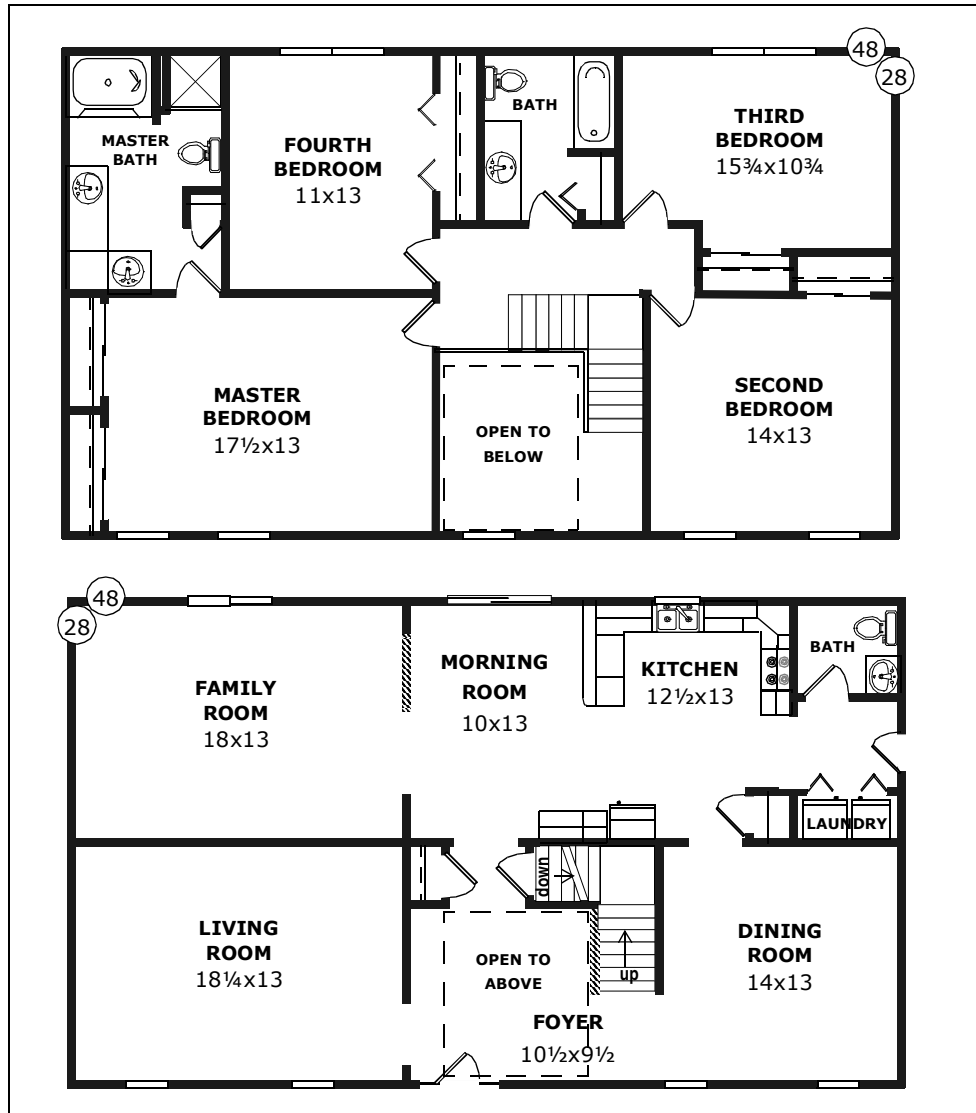
Size (2nd Flr): 28x44

Sqft: 2464

Rooms: 9

Bedrooms: 4

Baths: 1 3/4 + 1/2



THE STRATFORD

Plenty of space in this nine-room home. The two-story foyer will impress your friends.



Model Number: SN-143

Size (1st Flr): 28x48

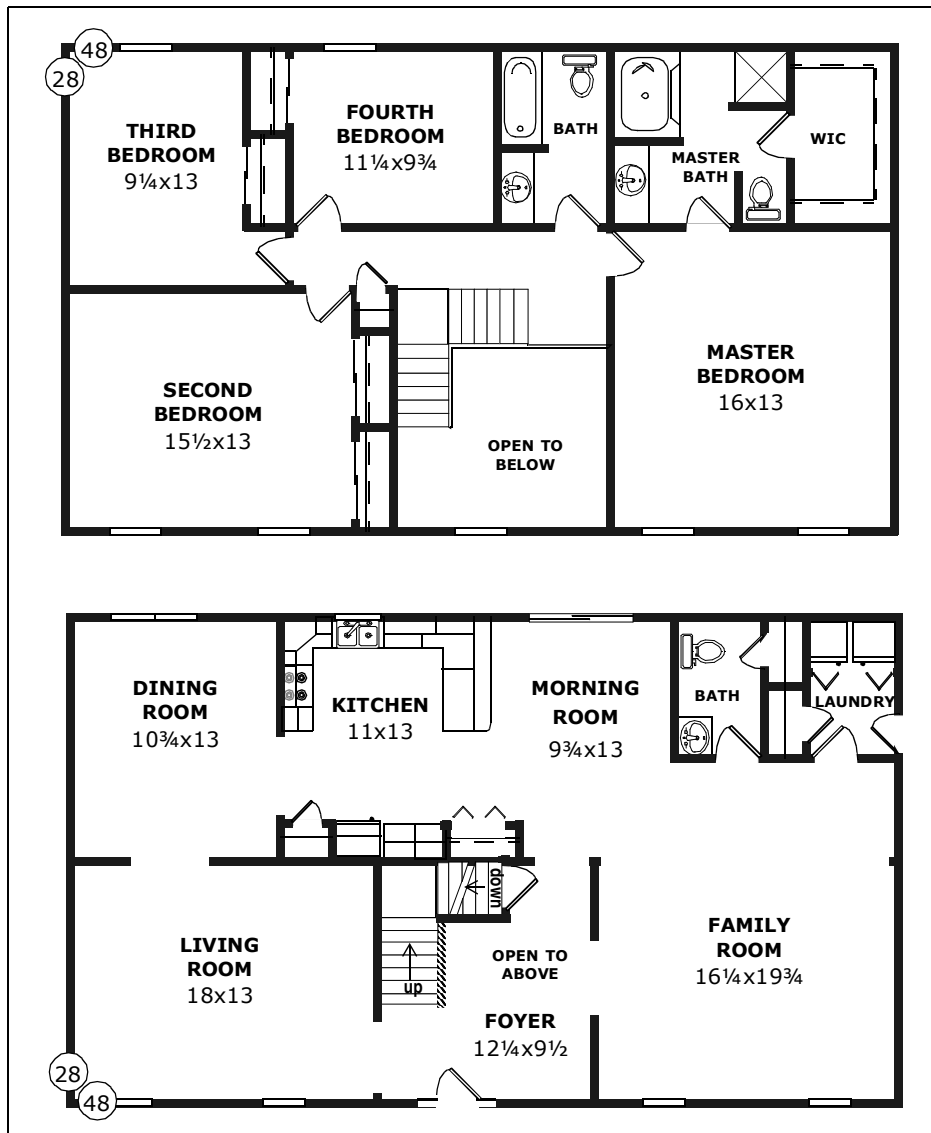
Size (2nd Flr): 28x48

Sqft: 2640

Rooms: 9

Bedrooms: 4

Baths: 2 1/2



THE WESTFIELD

Nice separation of formal and informal spaces in this grand nine-room home.



Model Number: SN-144

Size (1st Flr): 28x48

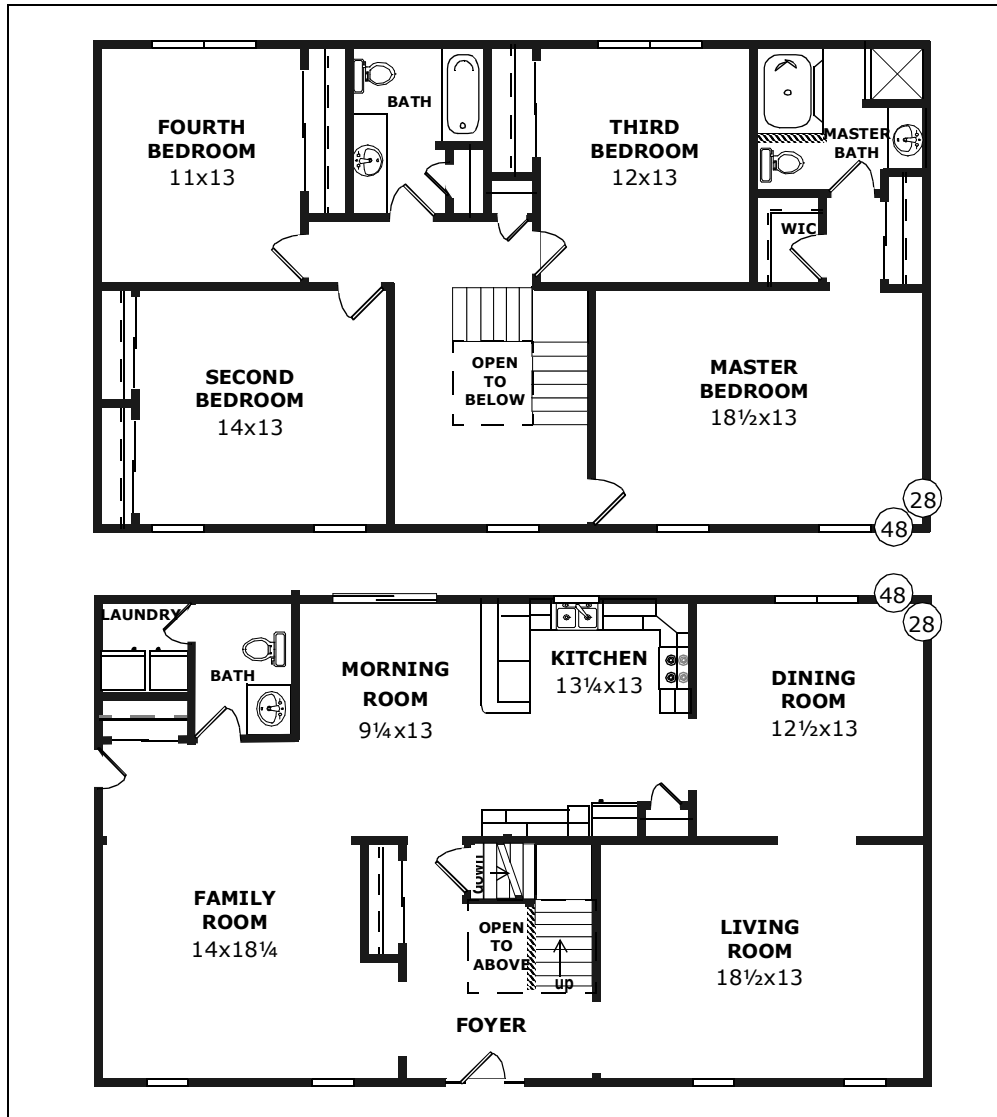
Size (2nd Flr): 28x48

Sqft: 2640

Rooms: 9

Bedrooms: 4

Baths: 2 1/2



THE WINCHESTER

Large kitchen, large dining room, cozy morning room and four large bedrooms.



Model Number: SN-145

Size (1st Flr): 28x48

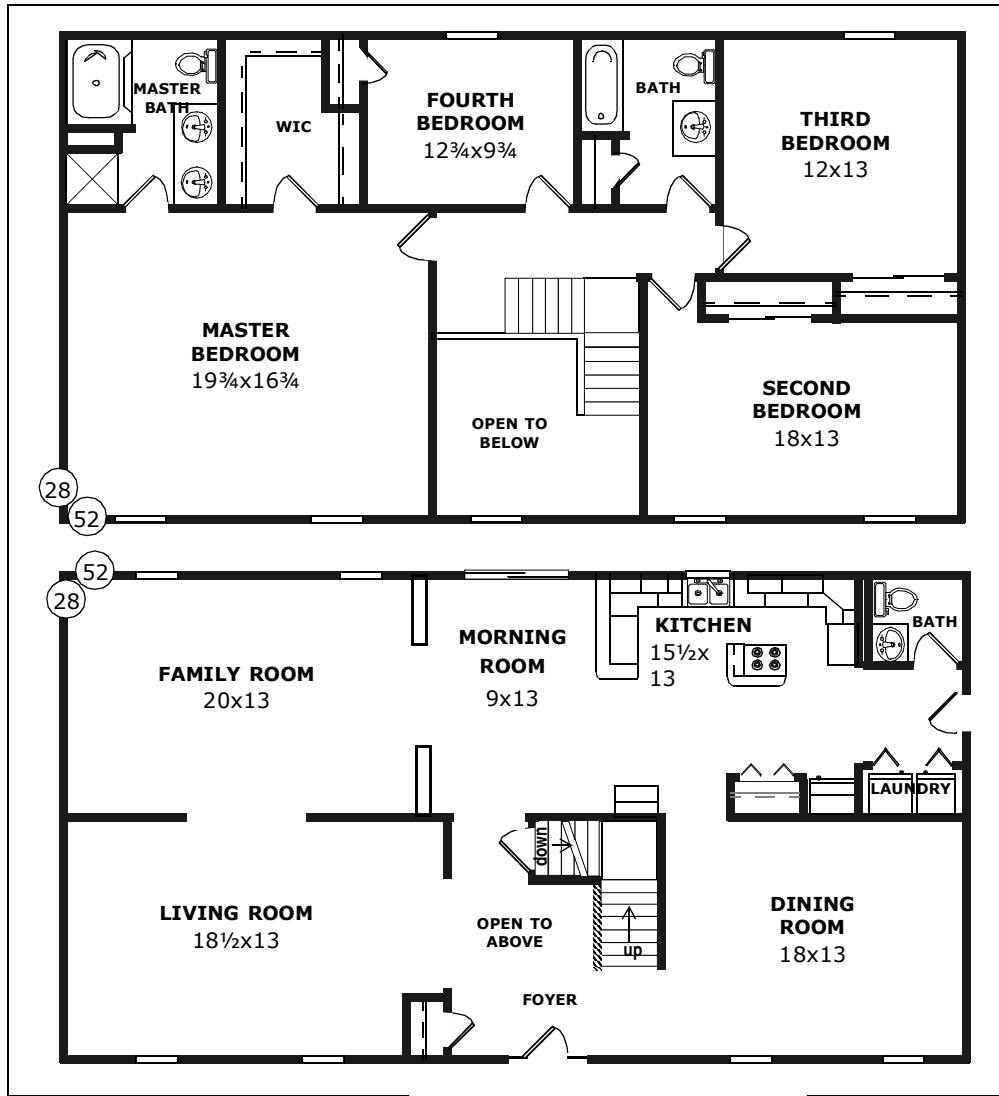
Size (2nd Flr): 28x48

Sqft: 2640

Rooms: 9

Bedrooms: 4

Baths: 2 1/2



THE BUCKINGHAM

A stunning colonial. Even the dining room is huge and what a lovely two-story foyer.

D&G Colonial

Model Number: SN-146

Size (1st Flr): 28x52

Size (2nd Flr): 28x52

Sqft: 2860

Rooms: 9

Bedrooms: 4

Baths: 2 1/2