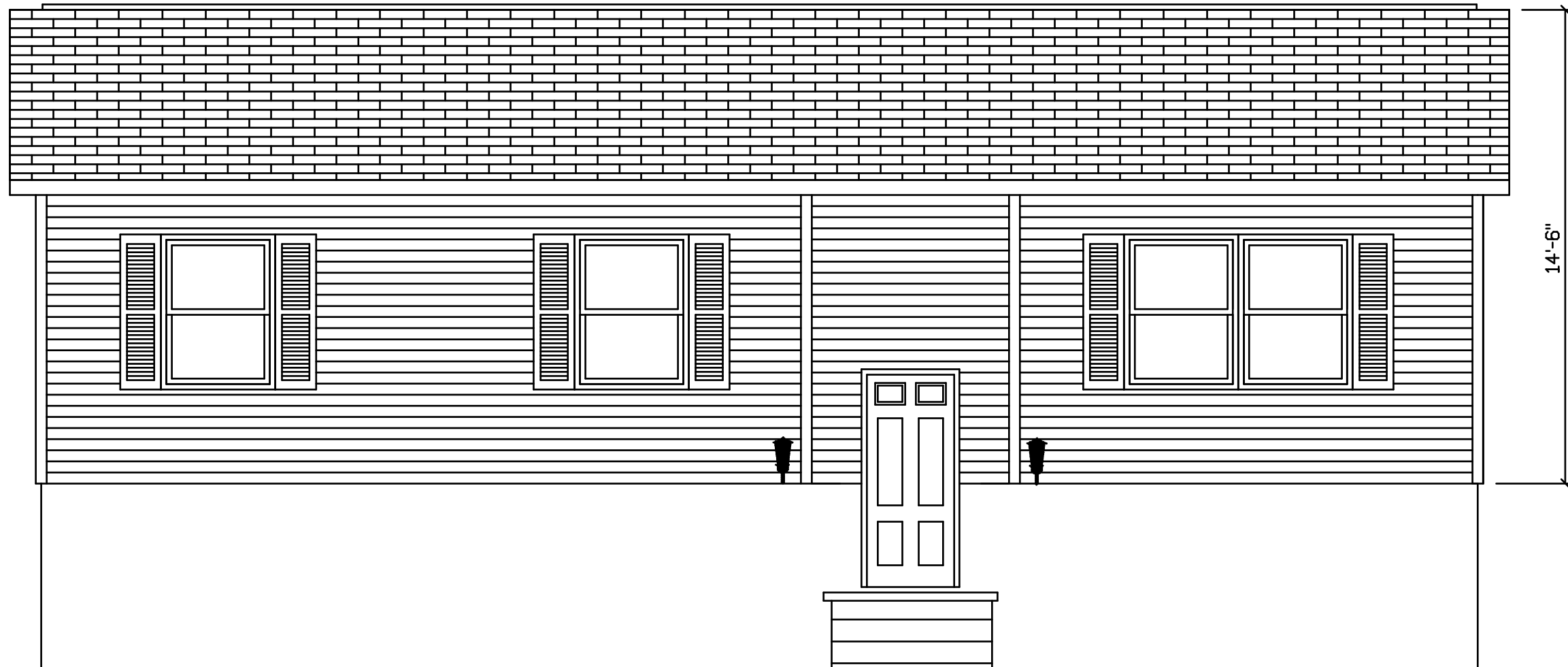


# CENTURION 922



FINISH, WINDOWS, SHUTTERS, AND  
STOOP BY BLDR ON SITE

INSTALLATION OF INSULATION  
AND SOFFIT MATERIAL ON CANTILEVER  
BY BUILDER ON SITE

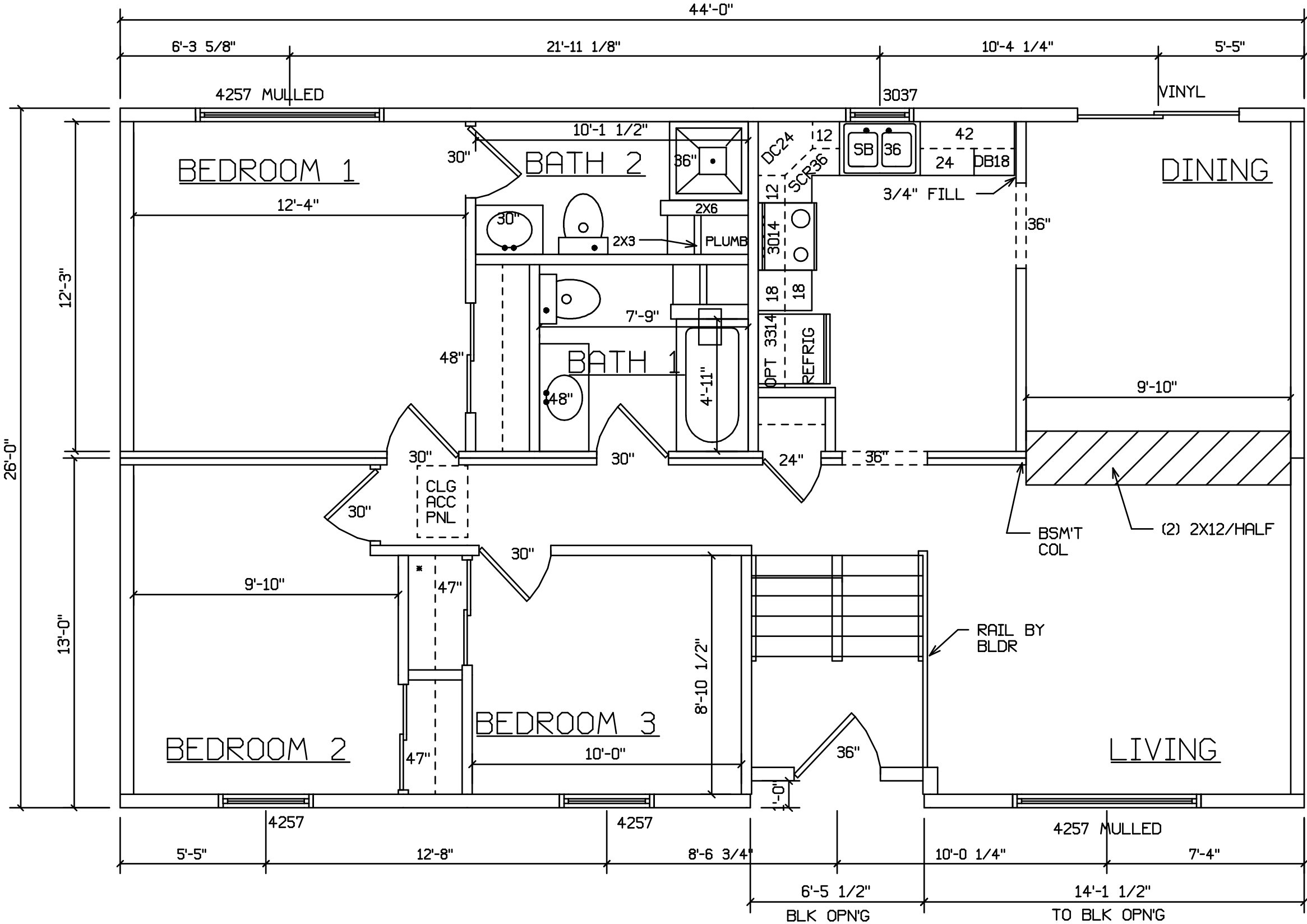
 HOLD BACK GYPBD 1'-0" PER  
SIDE IN OPEN AREAS

STAIRS DESIGNED TO 8 1/4" RISE  
MAX., AND 9" TREAD MIN W/ 1 1/8" NOSING

SITE LOCATION  
-----

BLDR/DEVEL. AUTHORIZATION	DATE	# LABEL LOCATION CLG HGTH	<i>Mary Kay A. Grady, P.E.</i> Production Engineer	<b>SUPERIOR BUILDERS</b> 1565 PA. RT. 442 E. MUNCY, PA. 17756 <b>A DIVISION OF MUNCY HOMES, INC.</b>	
MANUF. AUTHORIZATION	DATE	PLANS HAVE BEEN EXTRACTED FROM APPROVED BLDG SYSTEM DOCUMENTATION			BLD/CUSTOMER
		DWN BY	DATE	SCALE	JOB #
		MAS	04/23/03	1/4"=1'0"	26X44 CENTURION 922RRMAS

# CENTURION 922 MASS



INSTALLATION OF INSULATION AND SOFFIT MATERIAL ON CANTILEVER BY BUILDER ON SITE

 HOLD BACK GYPBD 1'-0" PER SIDE IN OPEN AREAS

STAIRS DESIGNED TO 8 1/4" RISE MAX., AND 9" TREAD MIN W/ 1 1/8" NOSING

SITE LOCATION

BLDR/DEVEL. AUTHORIZATION	DATE	*LABEL LOCATION CLG HGTH	<i>Gregory J. Hayes</i> Production Engineer	<b>SUPERIOR BUILDERS</b> 1565 PA. RT. 442 E. MUNCY, PA. 17756 <b>A DIVISION OF MUNCY HOMES, INC.</b>	JOB #
MANUF. AUTHORIZATION	DATE	PLANS HAVE BEEN EXTRACTED FROM APPROVED BLD'G SYSTEM DOCUMENTATION	SCALE 1/4"=1'0"		
			DWN BY MAS	DATE 04/23/03	BLD/CUSTOMER 26X44 CENTURION
					922RRMAS