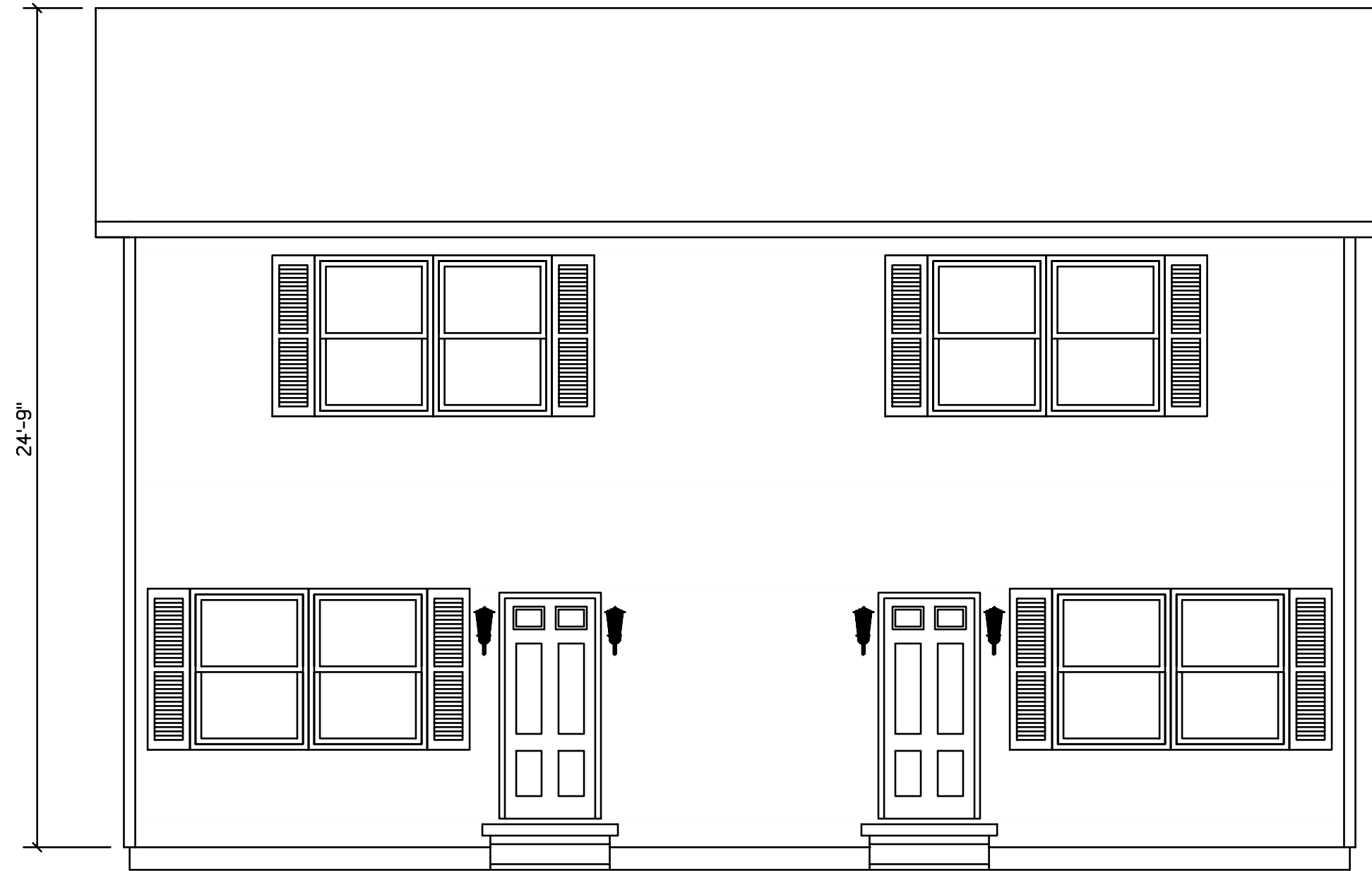

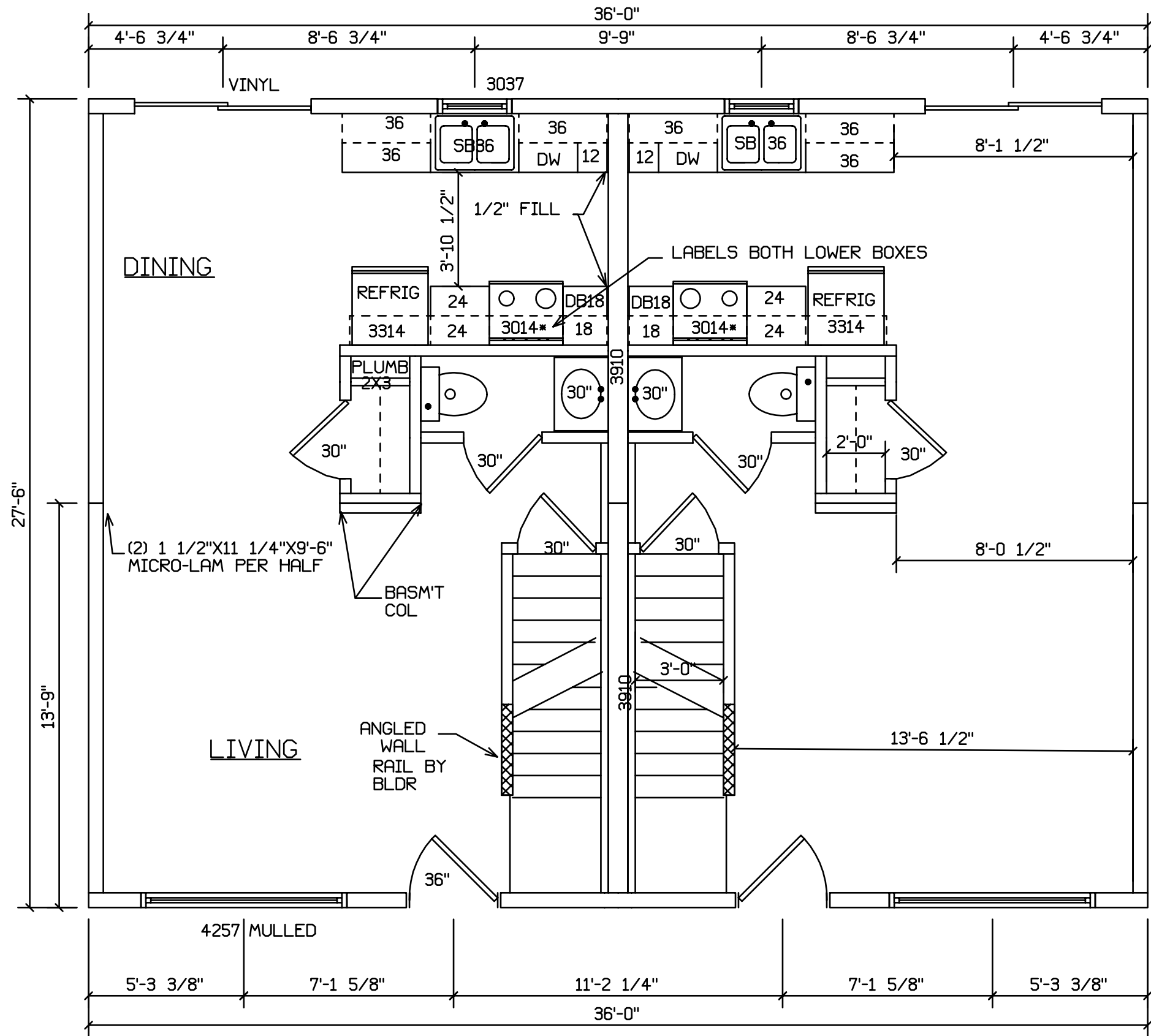


PLAN NO. 750



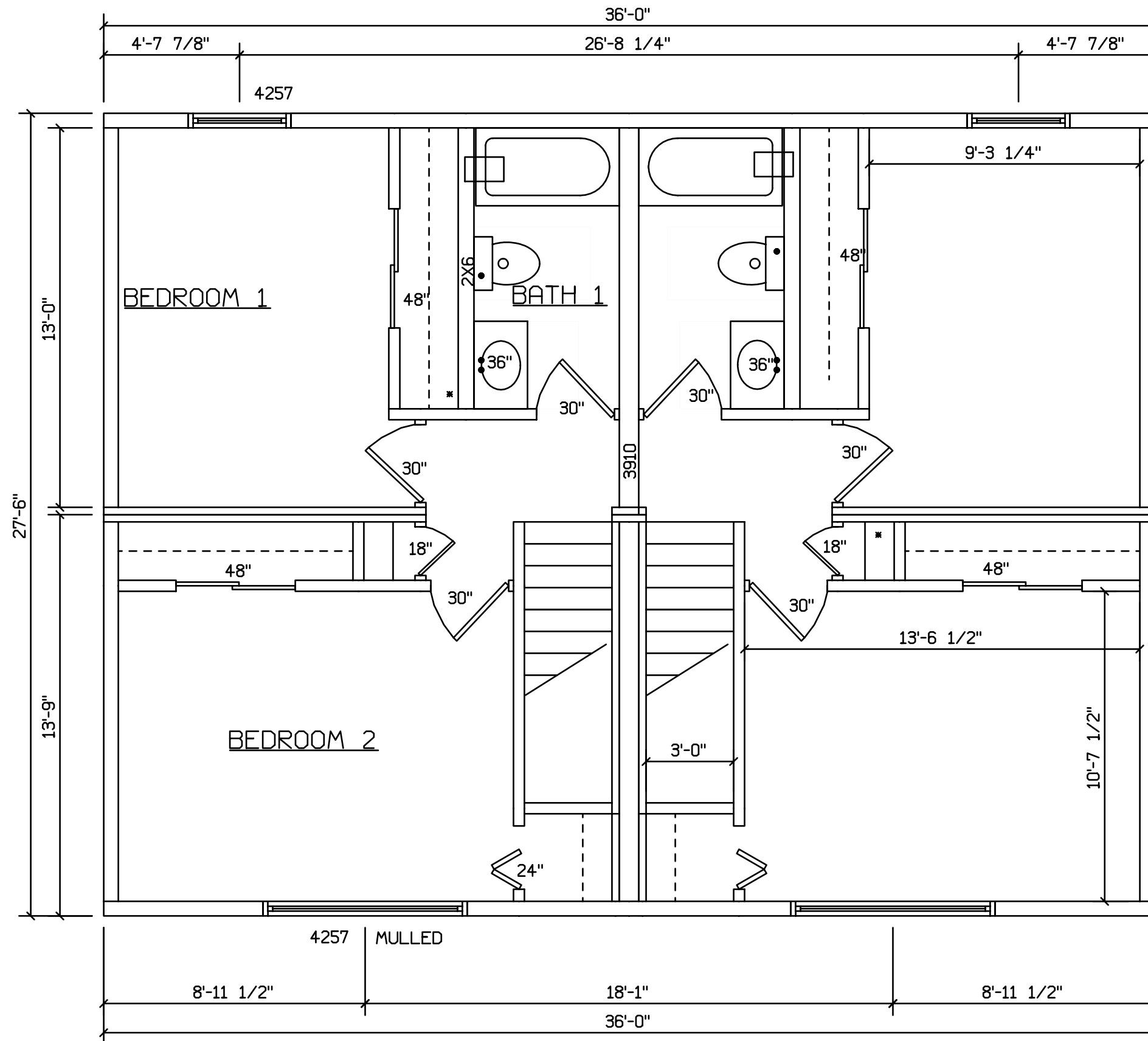
STAIRS DESIGNED TO 8 1/4" RISE
MAX., AND 9" TREAD MIN W/ 1 1/8" NOSING

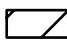
BLDR/DEVEL. AUTHORIZATION	DATE	# LABEL LOCATION	 LINDA A. LITZ PRODUCTION ENGINEER	SUPERIOR BUILDERS 1565 PA. RT. 442 E. MUNCY, PA. 17756 A DIVISION OF MUNCY HOMES, INC.	REV.
		CLG HGTH			
MANUF. AUTHORIZATION	DATE	THIS PLAN DERIVED FROM MASTER SERIES BUILDING SYSTEM		BLDR / CUST	DATABASE
		DWN BY	DATE	SCALE	
		LITZ	12-24-01	1/4"=1'-0"	750




STAIRS DESIGNED TO 8 1/4" RISE
MAX., AND 9" TREAD MIN W/ 1 1/8" NOSING

BLDR/DEVEL. AUTHORIZATION	DATE	# LABEL LOCATION CLG HGTH	<i>Linda A. Litz</i> LINDA A. LITZ PRODUCTION ENGINEER	SUPERIOR BUILDERS 1565 PA. RT. 442 E. MUNCY, PA. 17756 A DIVISION OF MUNCY HOMES, INC.	REV.
MANUF. AUTHORIZATION	DATE	THIS PLAN DERIVED FROM MASTER SERIES BUILDING SYSTEM		BLDR / CUST	DATABASE
		OWN BY LITZ	DATE 12-24-01	SCALE 1/4"=1'-0"	28X36 2 STORY DUPLEX 750



 HOLD BACK GYPBD 1'-0" PER SIDE IN OPEN AREAS
 STAIRS DESIGNED TO 8 1/4" RISE MAX., AND 9" TREAD MIN W/ 1 1/8" NOSING

BLDR/DEVEL. AUTHORIZATION	DATE	# LABEL LOCATION	 LINDA A. LITZ PRODUCTION ENGINEER	SUPERIOR BUILDERS 1565 PA. RT. 442 E. MUNCY, PA. 17756 A DIVISION OF MUNCY HOMES, INC.	REV.	
MANUF. AUTHORIZATION	DATE	CLG HGTH			THIS PLAN DERIVED FROM MASTER SERIES BUILDING SYSTEM	DATABASE
		OWN BY	DATE	SCALE	BLDR / CUST	
		LITZ	12-24-01	1/4"=1'-0"	28X36 2 STORY DUPLEX	750