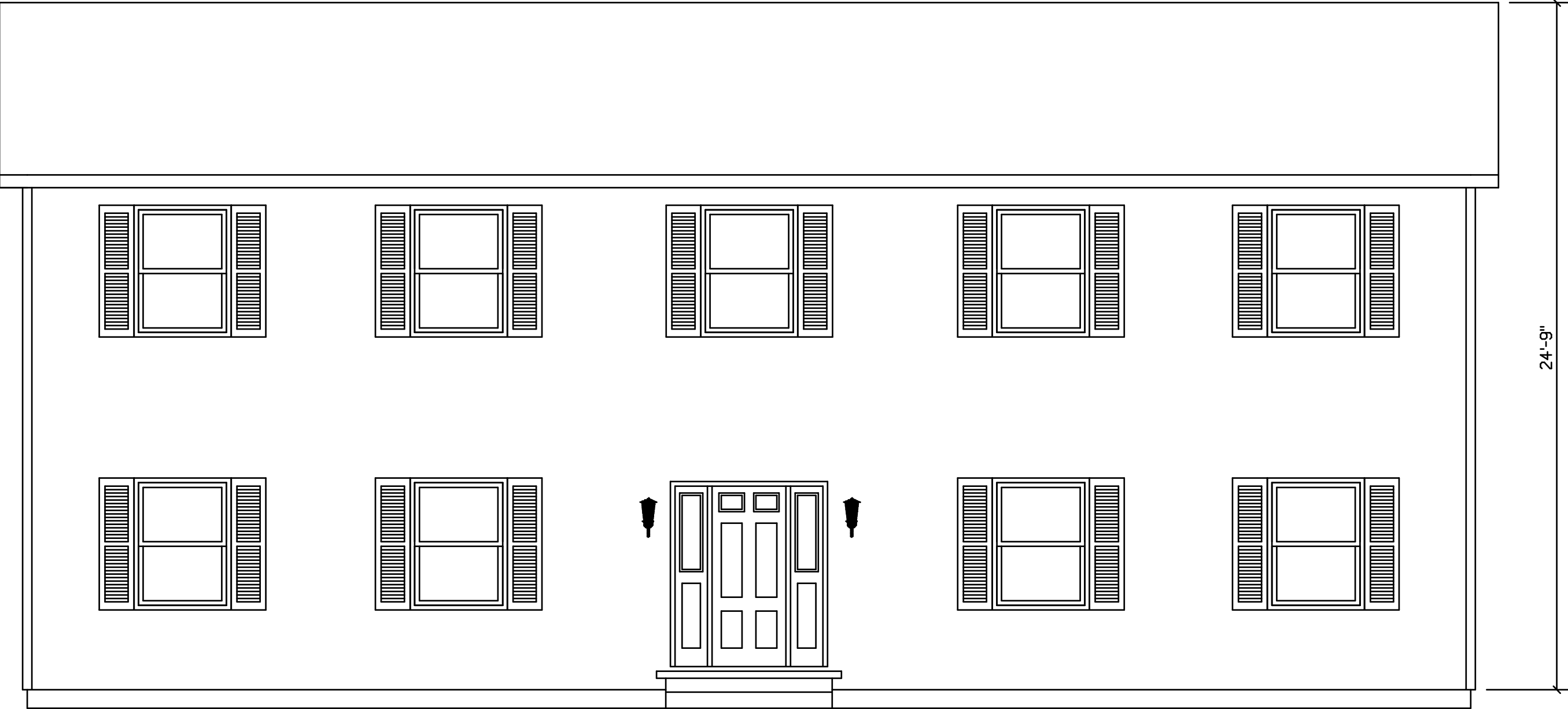


RUTLEDGE

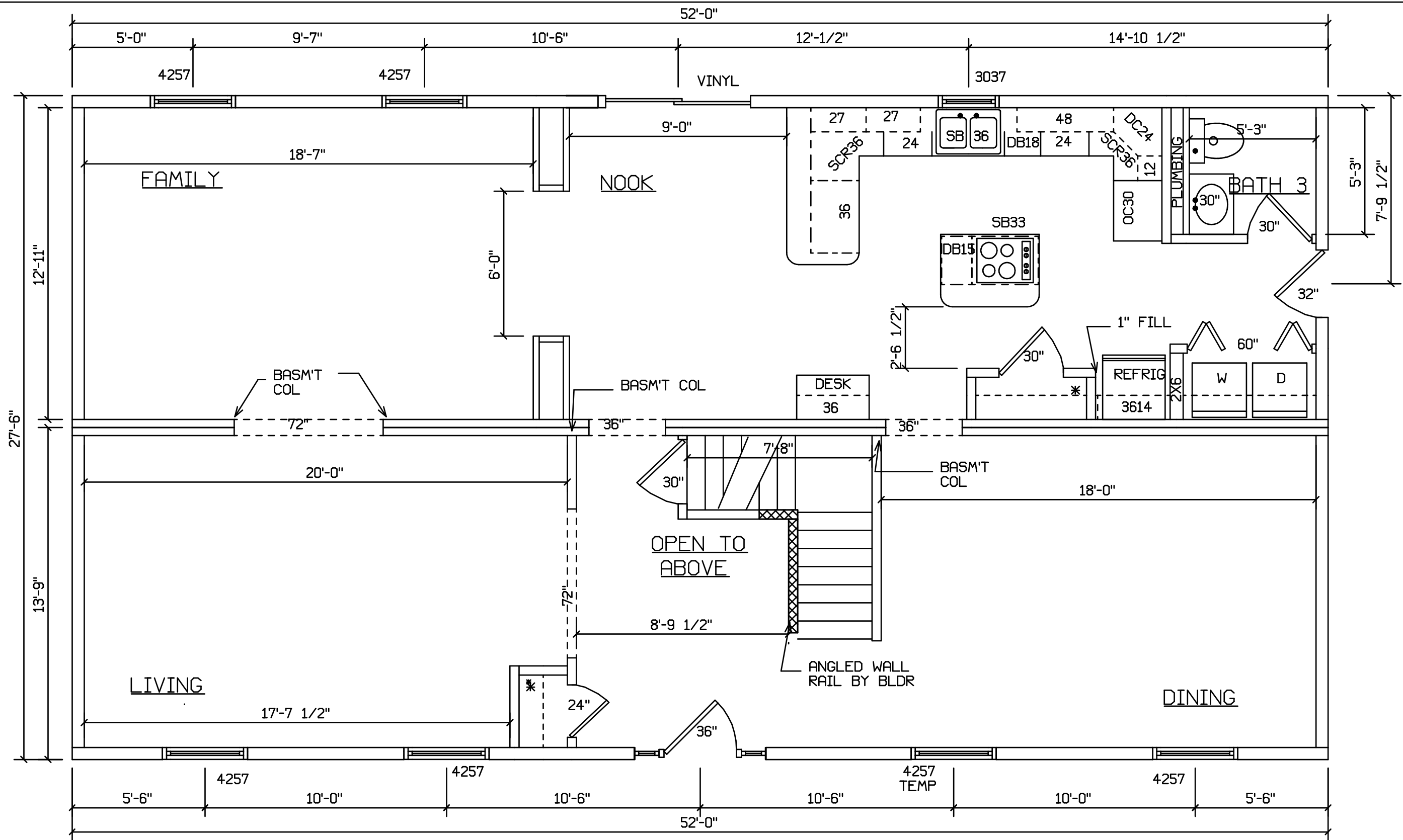


SITE LOCATION

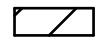
 HOLD BACK GYPBD 1'-0" PER SIDE IN OPEN AREAS

STAIRS DESIGNED TO 8 1/4" RISE MAX., AND 9" TREAD MIN W/ 1 1/8" NOSING

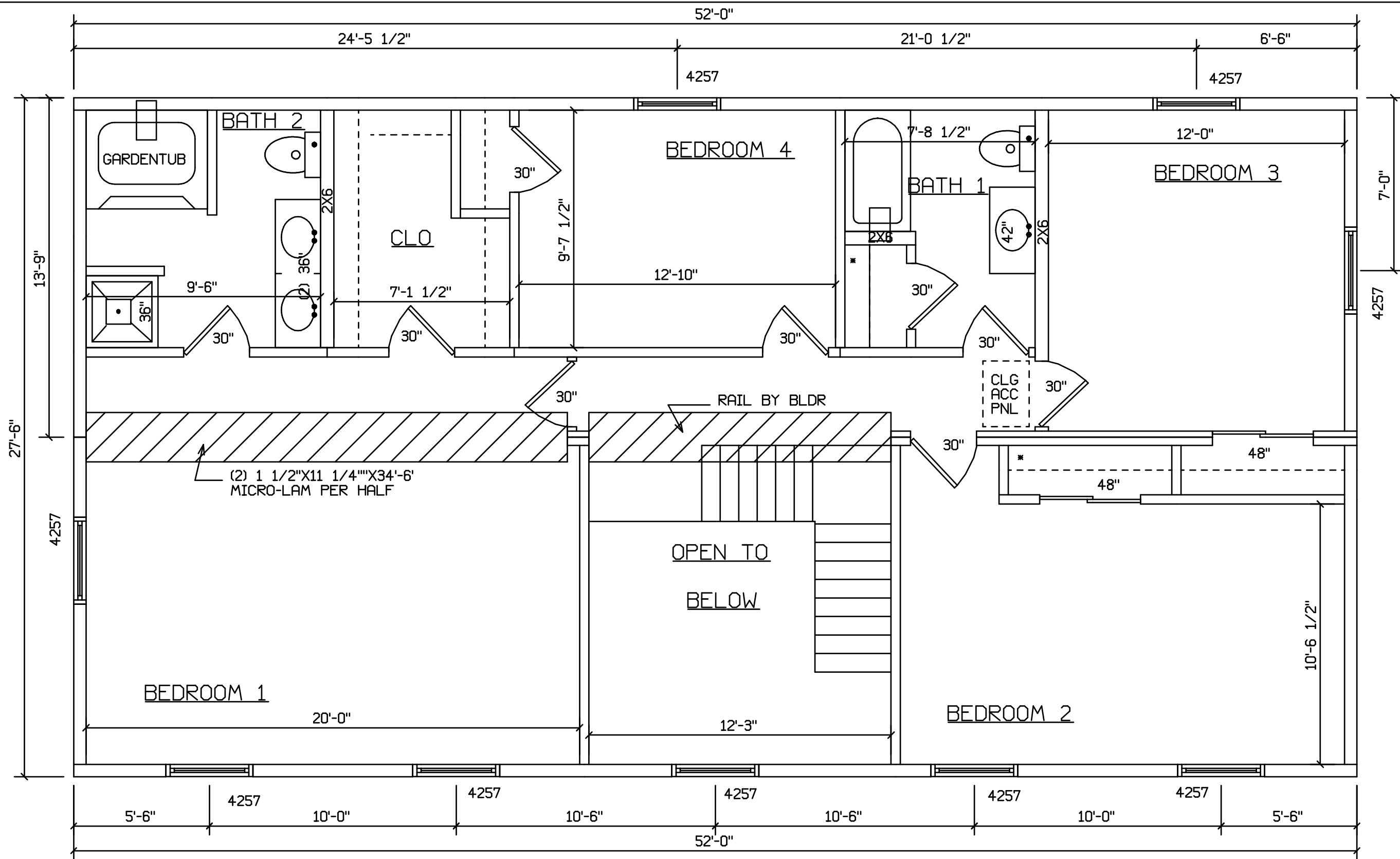
BLDR/DEVEL. AUTHORIZATION	DATE	# LABEL LOCATION	<i>Gregory J. Hayes</i> Production Engineer	SUPERIOR BUILDERS 1565 PA. RT. 442 E. MUNCY, PA. 17756 A DIVISION OF MUNCY HOMES, INC.	REV.
MANUF. AUTHORIZATION	DATE	CLG HGTH	PLANS HAVE BEEN EXTRACTED FROM APPROVED BLDG SYSTEM DOCUMENTATION		11-11-05
		DWN BY	DATE	SCALE	DATABASE
		LITZ	1-12-00	1/4"=1'-0"	516a
				BUILDER/CUSTOMER	
				28X52 RUTLEDGE 2 STORY	



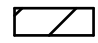
SITE LOCATION

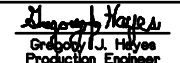
 HOLD BACK GYPBD 1'-0" PER SIDE IN OPEN AREAS
 STAIRS DESIGNED TO 8 1/4" RISE MAX., AND 9" TREAD MIN W/ 1 1/8" NOSING

BLDR/DEVEL. AUTHORIZATION	DATE	# LABEL LOCATION	CLG HGTH	<i>Gregory J. Hayes</i> Production Engineer	SUPERIOR BUILDERS 1565 PA. RT. 442 E. MUNCY, PA. 17756 A DIVISION OF MUNCY HOMES, INC.	REV.
MANUF. AUTHORIZATION	DATE	PLANS HAVE BEEN EXTRACTED FROM APPROVED BLDG SYSTEM DOCUMENTATION	DWN BY	DATE		SCALE
			LITZ	1-12-00	1/4"=1'-0"	516a
					BUILDER/CUSTOMER	
					28X52 RUTLEDGE 2 STORY	



SITE LOCATION

 HOLD BACK GYPBD 1'-0" PER SIDE IN OPEN AREAS
 STAIRS DESIGNED TO 8 1/4" RISE MAX., AND 9" TREAD MIN W/ 1 1/8" NOSING

BLDR/DEVEL. AUTHORIZATION	DATE	# LABEL LOCATION	 Gregory J. Hayes Production Engineer	SUPERIOR BUILDERS 1565 PA. RT. 442 E. MUNCY, PA. 17756 A DIVISION OF MUNCY HOMES, INC.	REV.
MANUF. AUTHORIZATION	DATE	PLANS HAVE BEEN EXTRACTED FROM APPROVED BLDG SYSTEM DOCUMENTATION			BUILDER/CUSTOMER
		DWN BY LITZ	DATE 1-12-00	SCALE 1/4"=1'-0"	DATABASE 516a
				28X52 RUTLEDGE 2 STORY	