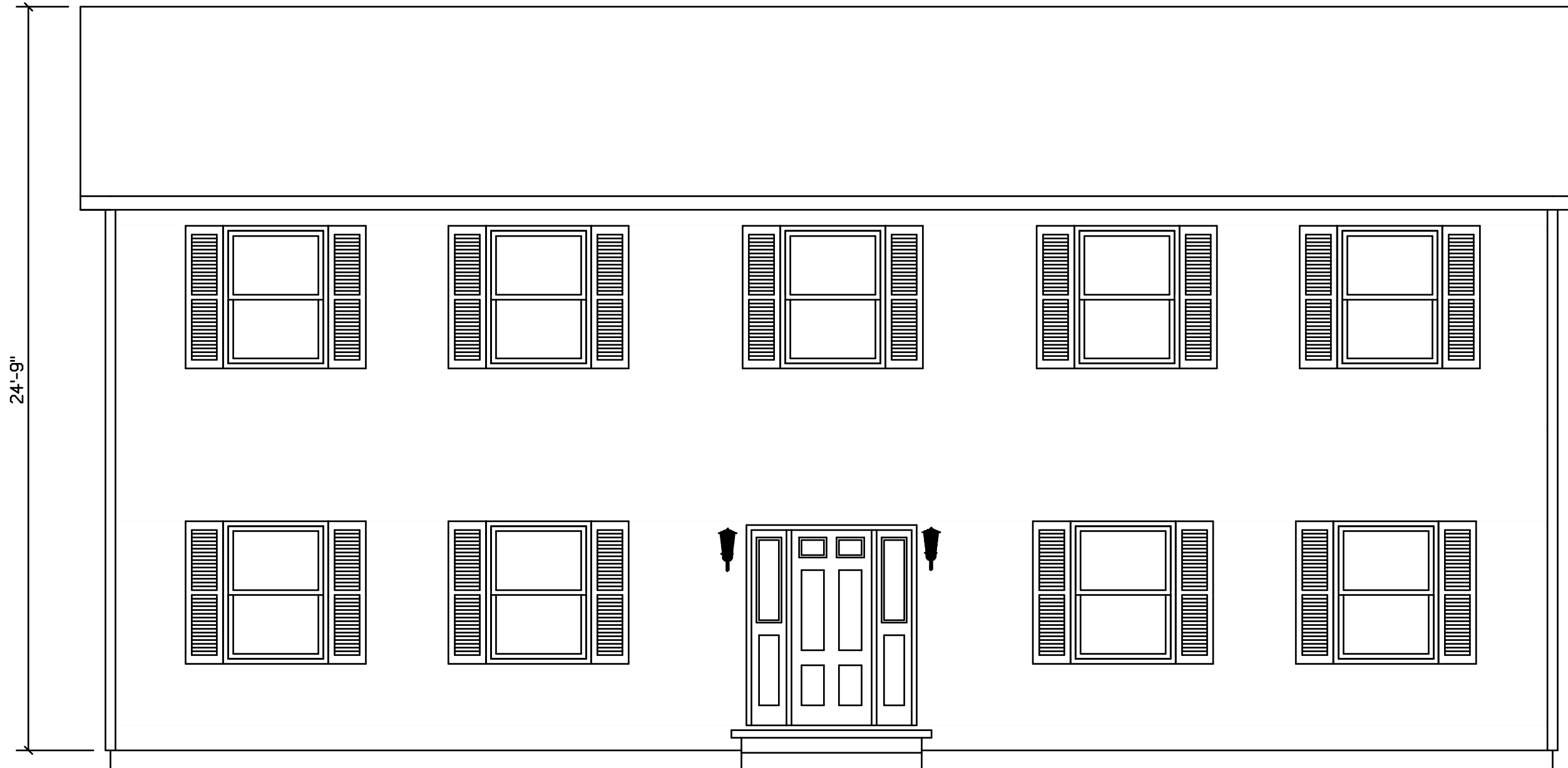


# MARTINSBURG - 513



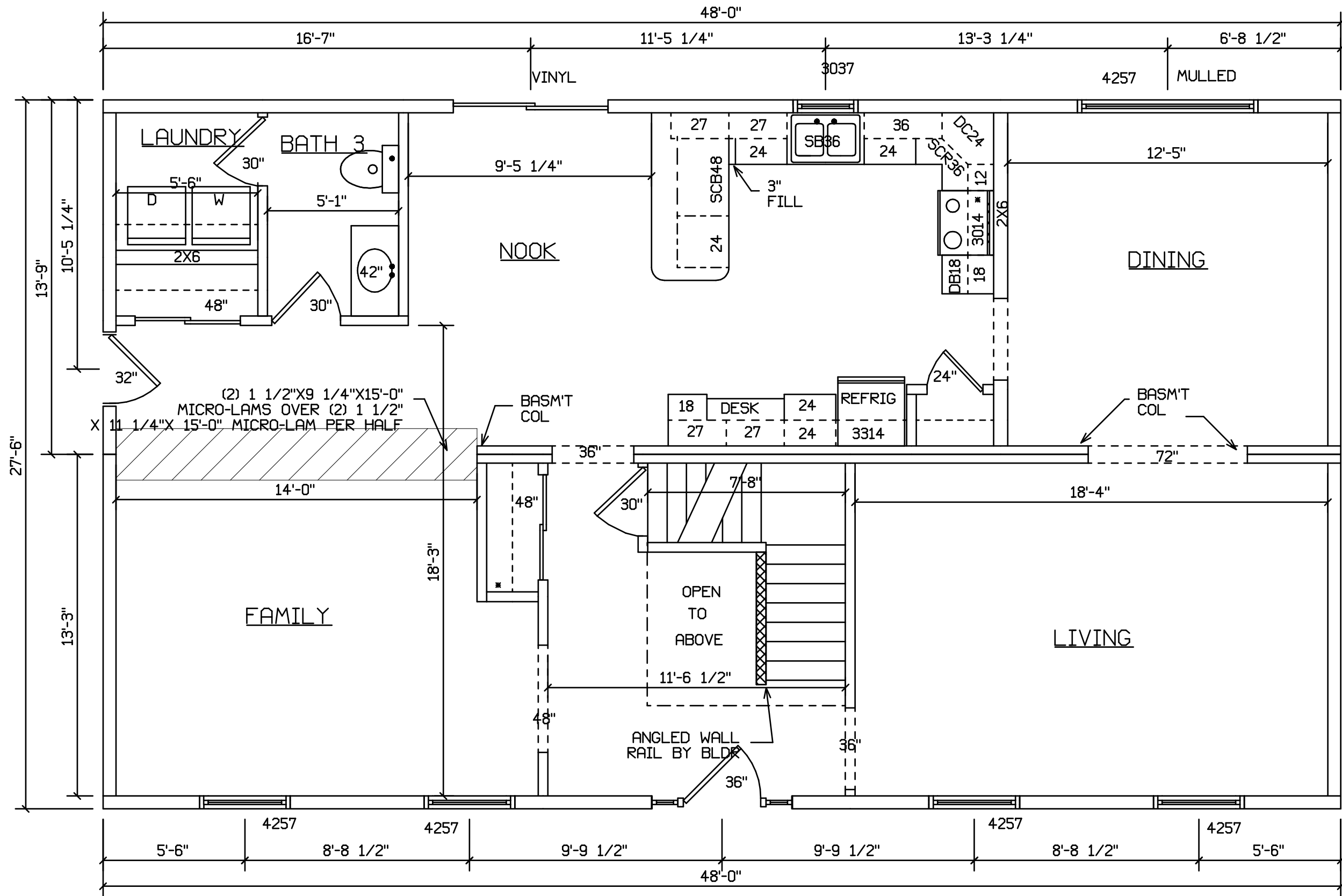
24'-9"

SITE LOCATION  
-----

 HOLD BACK GYPBD 1'-0" PER SIDE IN OPEN AREAS

STAIRS DESIGNED TO 8 1/4" RISE MAX., AND 9" TREAD MIN W/ 1 1/8" NOSING

BLDR/DEVEL. AUTHORIZATION	DATE	# LABEL LOCATION CLG HGTH	<i>Linda A. Litz</i> LINDA A. LITZ PRODUCTION ENGINEER	<b>SUPERIOR BUILDERS</b> 1565 PA. RT. 442 E. MUNCY, PA. 17756 <b>A DIVISION OF MUNCY HOMES, INC.</b>	REV.
MANUF. AUTHORIZATION	DATE	THIS PLAN DERIVED FROM MASTER SERIES BUILDING SYSTEM		BLDR / CUSTOMER	DATABASE
		DWN BY LITZ	DATE 03-10-00	SCALE 1/4"=1'-0"	513a
				MARTINSBURG 24X48 2 STORY	

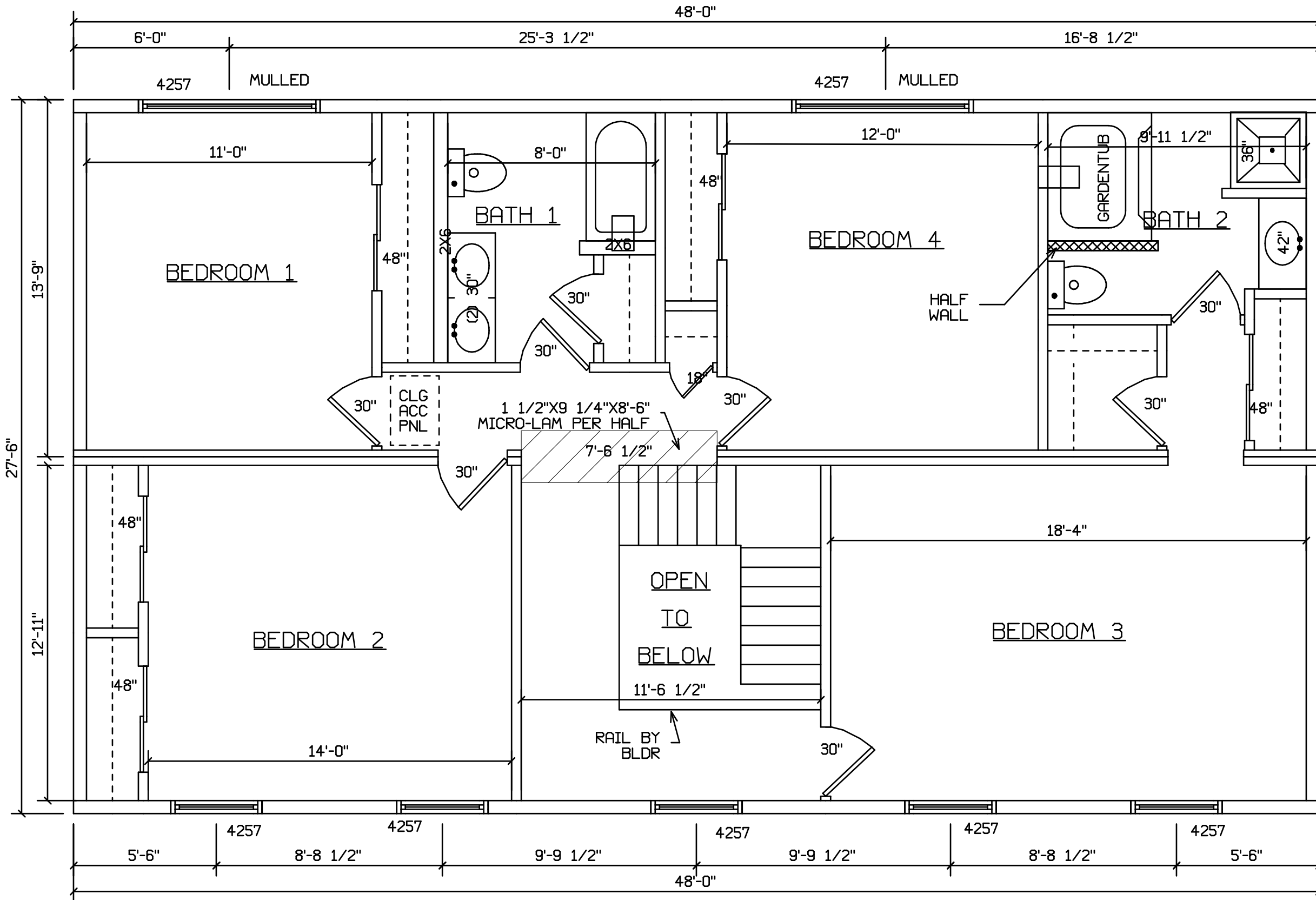


SITE LOCATION

HOLD BACK GYPBD 1'-0" PER SIDE IN OPEN AREAS

STAIRS DESIGNED TO 8 1/4" RISE MAX., AND 9" TREAD MIN W/ 1 1/8" NOSING


BLDR/DEVEL. AUTHORIZATION	DATE	# LABEL LOCATION	 LINDA A. LITZ PRODUCTION ENGINEER	<b>SUPERIOR BUILDERS</b> 1565 PA. RT. 442 E. MUNCY, PA. 17756 <b>A DIVISION OF MUNCY HOMES, INC.</b>	REV.
MANUF. AUTHORIZATION	DATE	CLG HGTH			THIS PLAN DERIVED FROM MASTER SERIES BUILDING SYSTEM DWN BY LITZ DATE 03-10-00 SCALE 1/4"=1'-0"
				BLDR / CUSTOMER	
				MARTINSBURG 24X48 2 STORY	



SITE LOCATION  
-----

 HOLD BACK GYPBD 1'-0" PER SIDE IN OPEN AREAS

STAIRS DESIGNED TO 8 1/4" RISE MAX., AND 9" TREAD MIN W/ 1 1/8" NOSING

BLDR/DEVEL. AUTHORIZATION	DATE	# LABEL LOCATION	 LINDA A. LITZ PRODUCTION ENGINEER	<b>SUPERIOR BUILDERS</b> 1565 PA. RT. 442 E. MUNCY, PA. 17756 <b>A DIVISION OF MUNCY HOMES, INC.</b>	REV.
MANUF. AUTHORIZATION	DATE	THIS PLAN DERIVED FROM MASTER SERIES BUILDING SYSTEM			BLDR / CUSTOMER
		DWN BY LITZ	DATE 03-10-00	SCALE 1/4"=1'-0"	MARTINSBURG 24X48 2 STORY