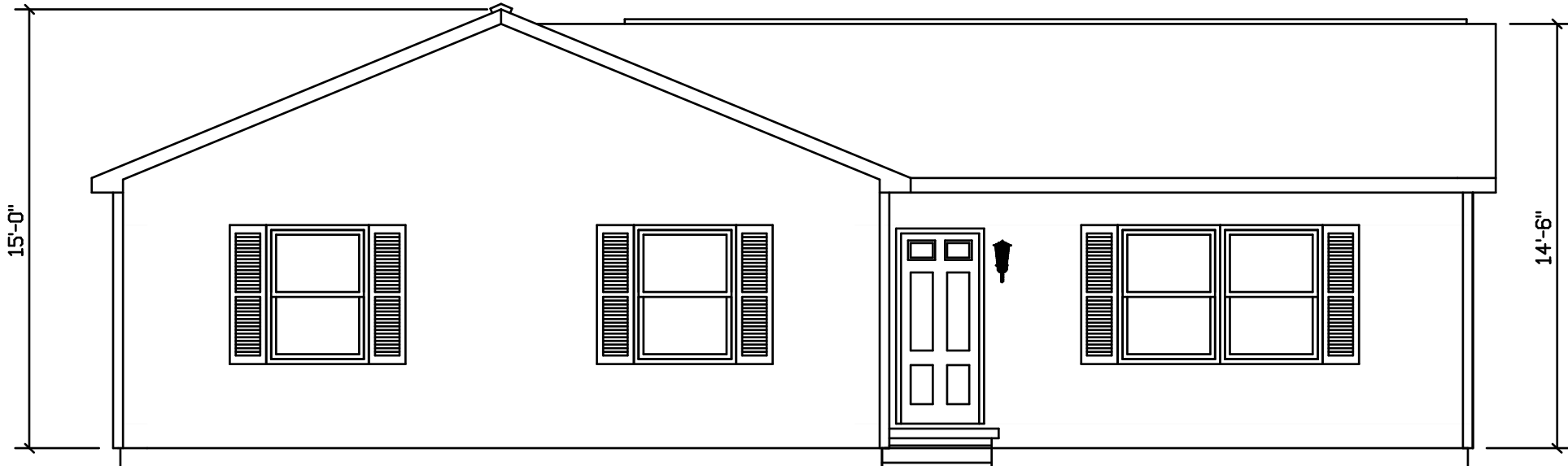
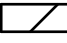



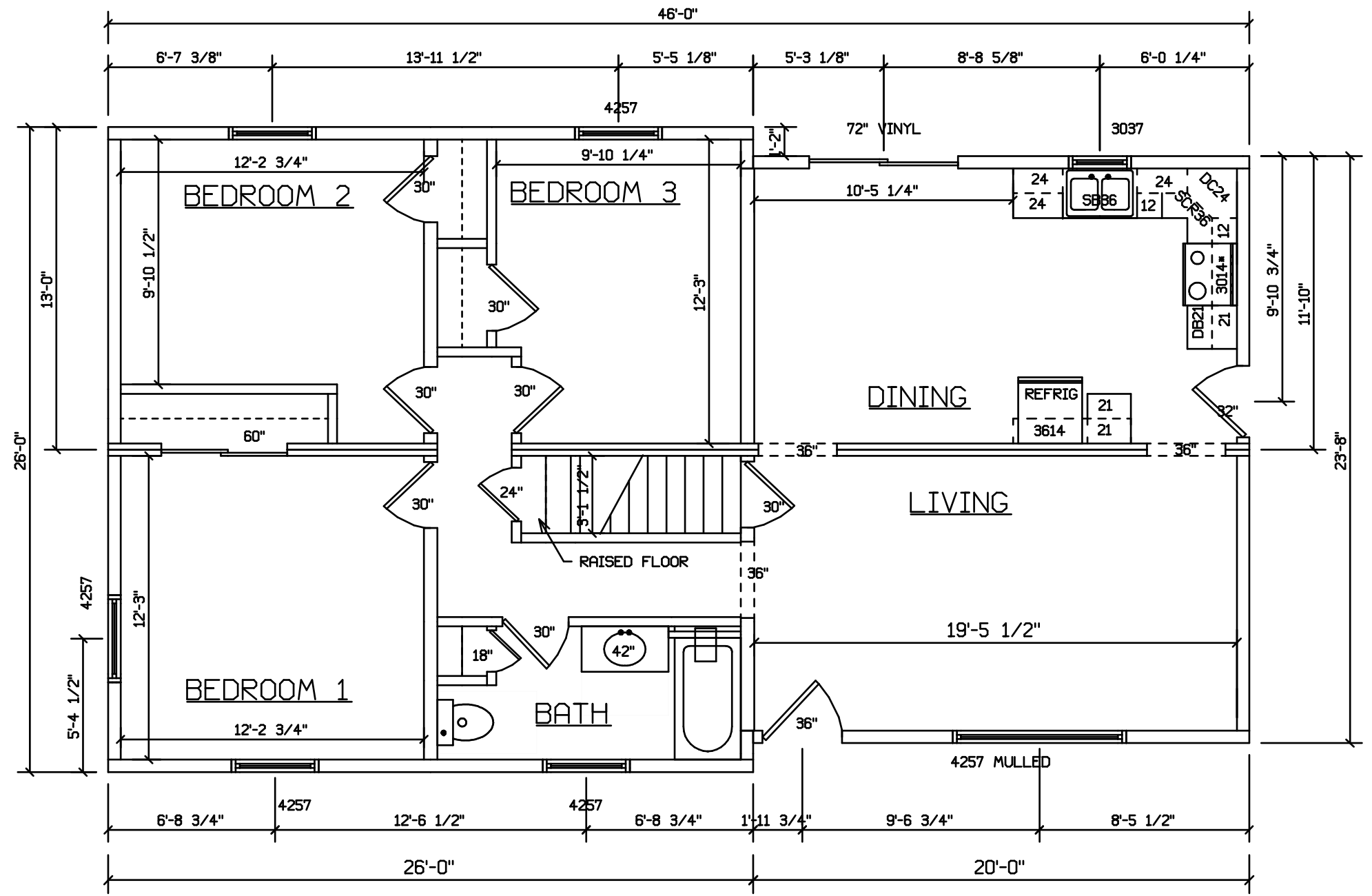
# TIMBERCREEK



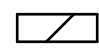
SITE LOCATION


 HOLD BACK GYPBD 1'-0" PER SIDE IN OPEN AREAS  
 STAIRS DESIGNED TO 8 1/4" RISE MAX., AND 9" TREAD MIN W/ 1 1/8" NOSING

BLDR/DEVEL. AUTHORIZATION	DATE	# LABEL LOCATION	 LINDA A. LITZ PRODUCTION ENGINEER	<b>SUPERIOR BUILDERS</b> 1565 PA. RT. 442 E. MUNCY, PA. 17756 <b>A DIVISION OF MUNCY HOMES, INC.</b>	REV.
MANUF. AUTHORIZATION	DATE	CLG HGTH			PLANS HAVE BEEN EXTRACTED FROM APPROVED BLD'G SYSTEM DOCUMENTATION
		DWN BY	DATE	SCALE	
		LITZ		3/16"=1'-0"	24/26 TEE RANCH



SITE LOCATION

 HOLD BACK GYPBD 1'-0" PER SIDE IN OPEN AREAS  
 STAIRS DESIGNED TO 8 1/4" RISE MAX., AND 9" TREAD MIN W/ 1 1/8" NOSING

BLDR/DEVEL. AUTHORIZATION	DATE	# LABEL LOCATION	 LINDA A. LITZ PRODUCTION ENGINEER	<b>SUPERIOR BUILDERS</b> 1565 PA. RT. 442 E. MUNCY, PA. 17756 <b>A DIVISION OF MUNCY HOMES, INC.</b>	REV.
MANUF. AUTHORIZATION	DATE	CLG HGTH			PLANS HAVE BEEN EXTRACTED FROM APPROVED BLD'G SYSTEM DOCUMENTATION
		DWN BY	DATE	SCALE	
		LITZ		3/16"=1'-0"	24/26 TEE RANCH