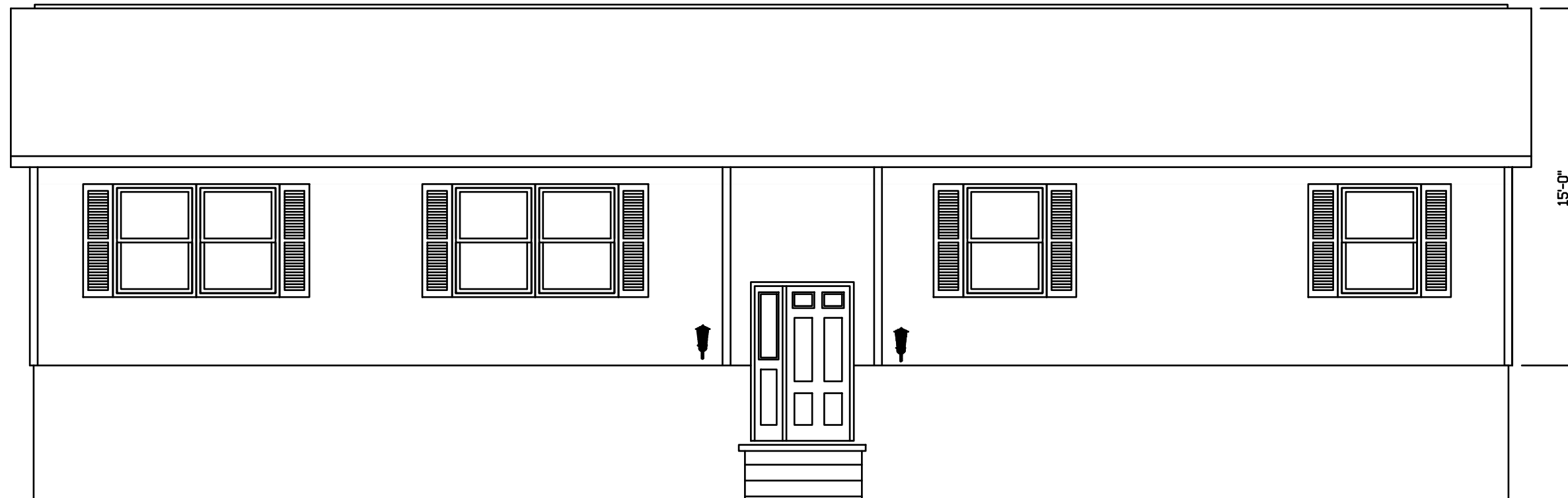


WHITNEY - 333



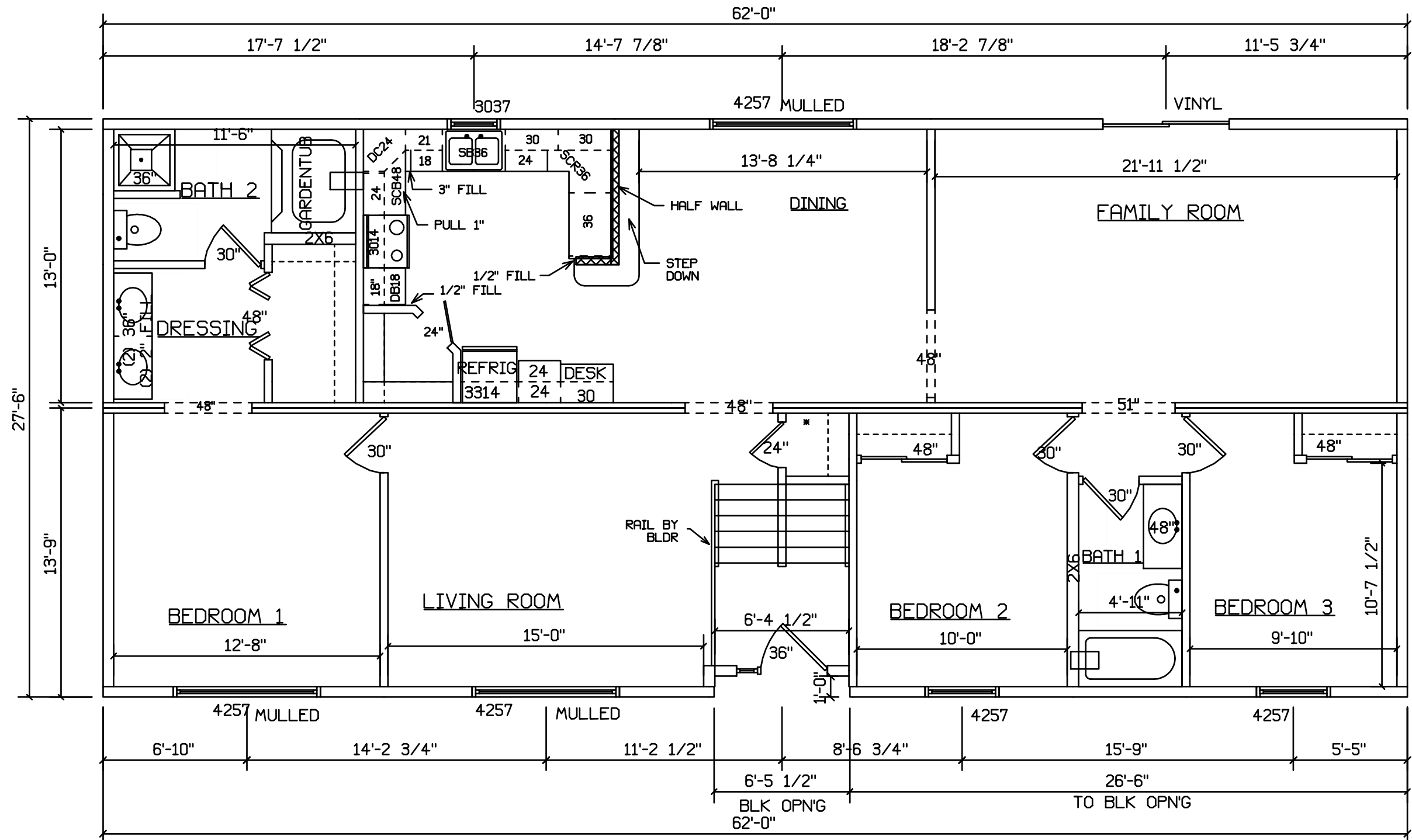
FINISH, WINDOWS, SHUTTERS, AND
STOOP BY BLDR ON SITE

INSTALLATION OF INSULATION
AND SOFFIT MATERIAL ON CANTILEVER
BY BUILDER ON SITE

SITE LOCATION

STAIRS DESIGNED TO 8 1/4" RISE
MAX., AND 9" TREAD MIN W/ 1 1/8" NOSING

BLDR/DEVEL. AUTHORIZATION	DATE	# LABEL LOCATION	BY	DATE	SCALE	PROJECT	REV.
		CLG HGTH	<i>James L. Lutz</i>			SUPERIOR BUILDERS 1565 PA. RT. 442 E. MUNCY, PA. 17756 A DIVISION OF MUNCY HOMES, INC.	
MANUF. AUTHORIZATION	DATE	PLANS HAVE BEEN EXTRACTED FROM APPROVED BLDG SYSTEM DOCUMENTATION		DATE	SCALE	BLDR / CUST	DATABASE
		OWN BY	LITZ	5-8-00	3/16"=1'-0"	28X62 WHITNEY RAISED RANCH	333cp



SITE LOCATION

STAIRS DESIGNED TO 8 1/4" RISE
MAX. AND 9" TREAD MIN W/ 1 1/8" NOSING

BILDR/DEVEL. AUTHORIZATION	DATE	# LABEL LOCATION	BY	DATE	SCALE	SUPERIOR BUILDERS 1565 PA. RT. 442 E. MUNCY, PA. 17756 A DIVISION OF MUNCY HOMES, INC.	REV.
MANUF. AUTHORIZATION	DATE	PLANS HAVE BEEN EXTRACTED FROM APPROVED BLDG SYSTEM DOCUMENTATION	BY	DATE	SCALE		BLDR / CUST
		LITZ		5-8-00	3/16"=1'-0"	28X62 WHITNEY RAISED RANCH	