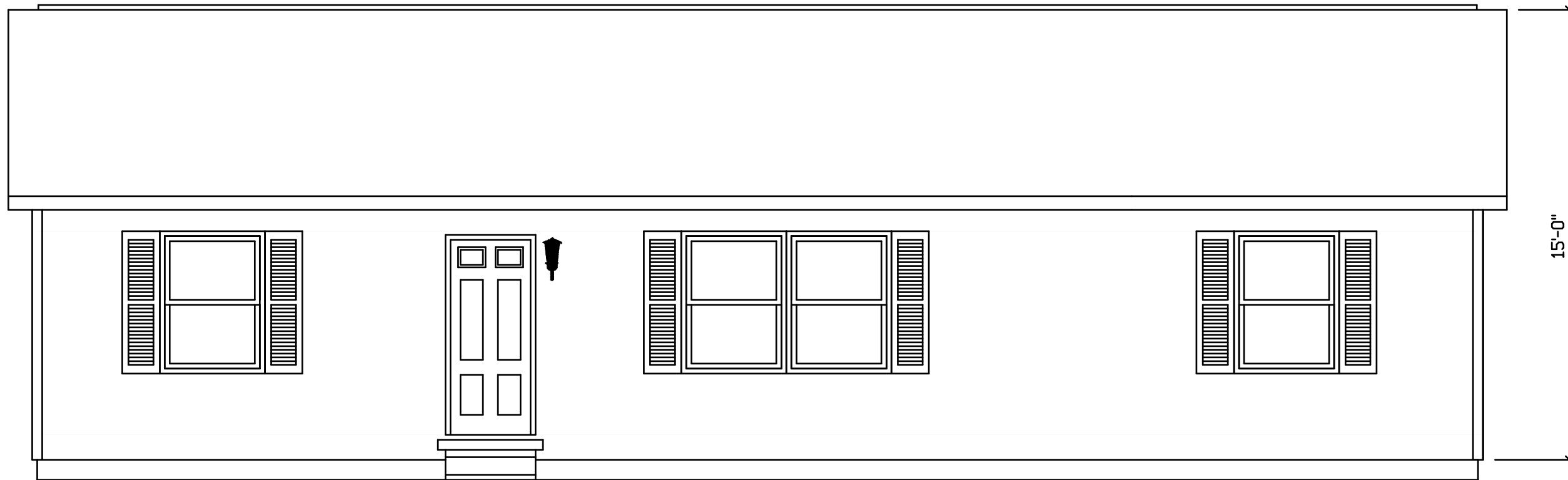


JUNIATA 264



15'-0"

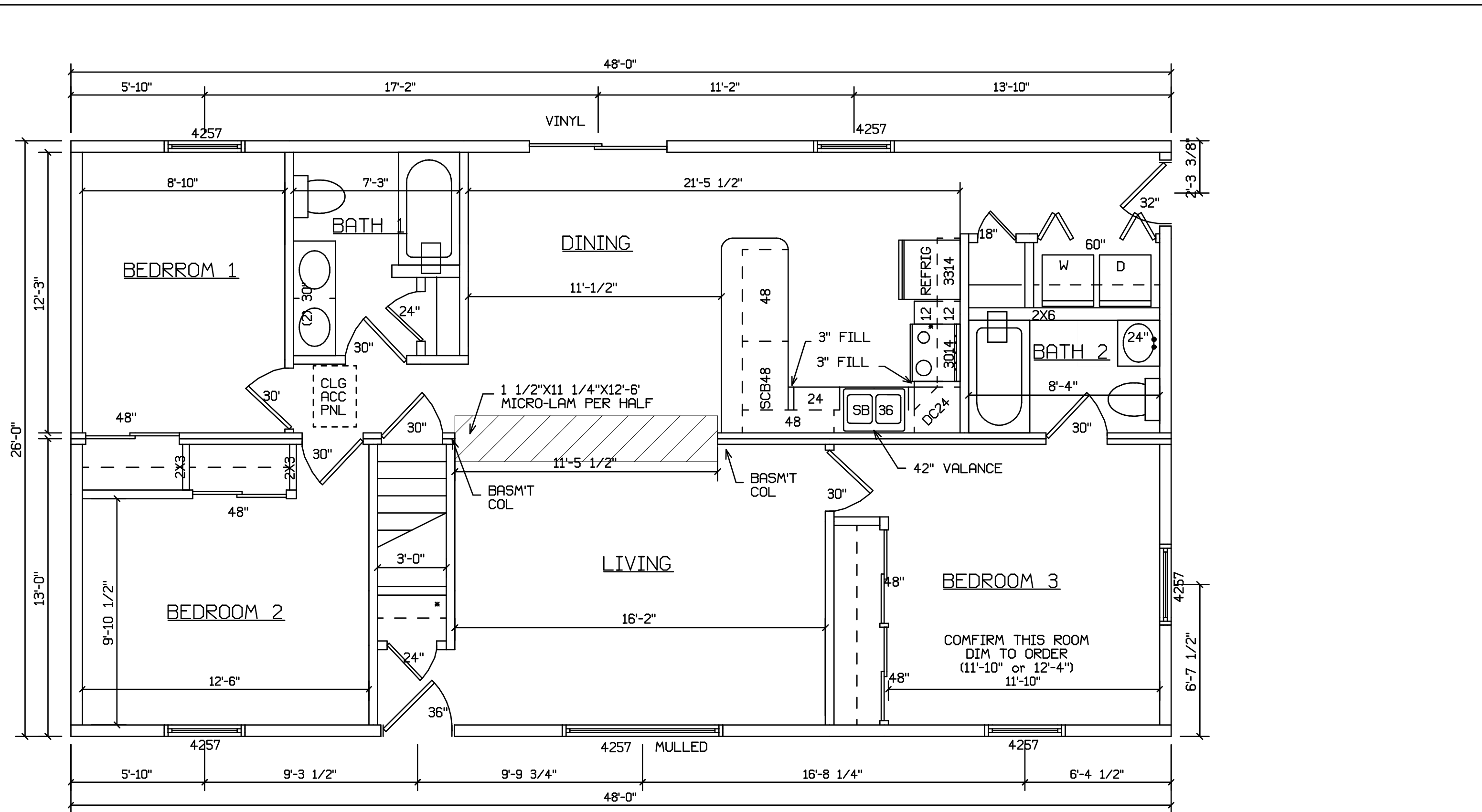
SITE LOCATION



HOLD BACK GYPBD 1'-0" PER SIDE IN OPEN AREAS

STAIRS DESIGNED TO 8 1/4" RISE MAX., AND 9" TREAD MIN W/ 1 1/8" NOSING


BLDR/DEVEL. AUTHORIZATION	DATE	# LABEL LOCATION CLG HGTH	<i>Linda A. Litz</i> LINDA A. LITZ PRODUCTION ENGINEER	SUPERIOR BUILDERS 1565 PA. RT. 442 E. MUNCY, PA. 17756 A DIVISION OF MUNCY HOMES, INC.	REV. 2-8-01
MANUF. AUTHORIZATION	DATE	THIS PLAN DERIVED FROM MASTER SERIES BUILDING SYSTEM		BLDR / CUSTOMER	DATABASE 264a
		DWN BY LITZ	DATE 3-17-99	SCALE 1/4"=1'-0"	264



SITE LOCATION

 HOLD BACK GYPBD 1'-0" PER SIDE IN OPEN AREAS

STAIRS DESIGNED TO 8 1/4" RISE MAX., AND 9" TREAD MIN W/ 1 1/8" NOSING

BLDR/DEVEL. AUTHORIZATION	DATE	# LABEL LOCATION	 LINDA A. LITZ PRODUCTION ENGINEER	SUPERIOR BUILDERS 1565 PA. RT. 442 E. MUNCY, PA. 17756 A DIVISION OF MUNCY HOMES, INC.	REV.
MANUF. AUTHORIZATION	DATE	CLG HGTH			THIS PLAN DERIVED FROM MASTER SERIES BUILDING SYSTEM
		DWN BY	DATE	SCALE	DATABASE
		LITZ	3-17-99	1/4"=1'-0"	264a
				BLDR / CUSTOMER	264
				26x48 RANCH JUANITA	