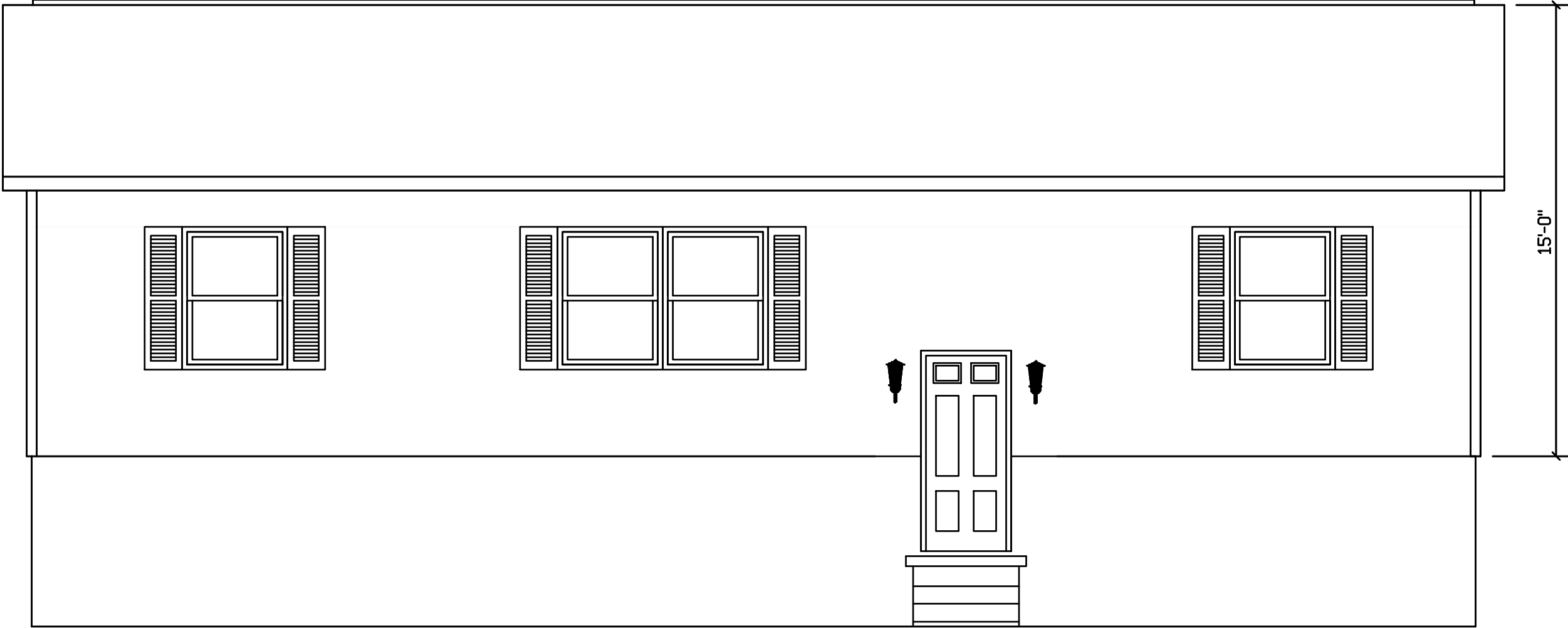


ORELAND-260



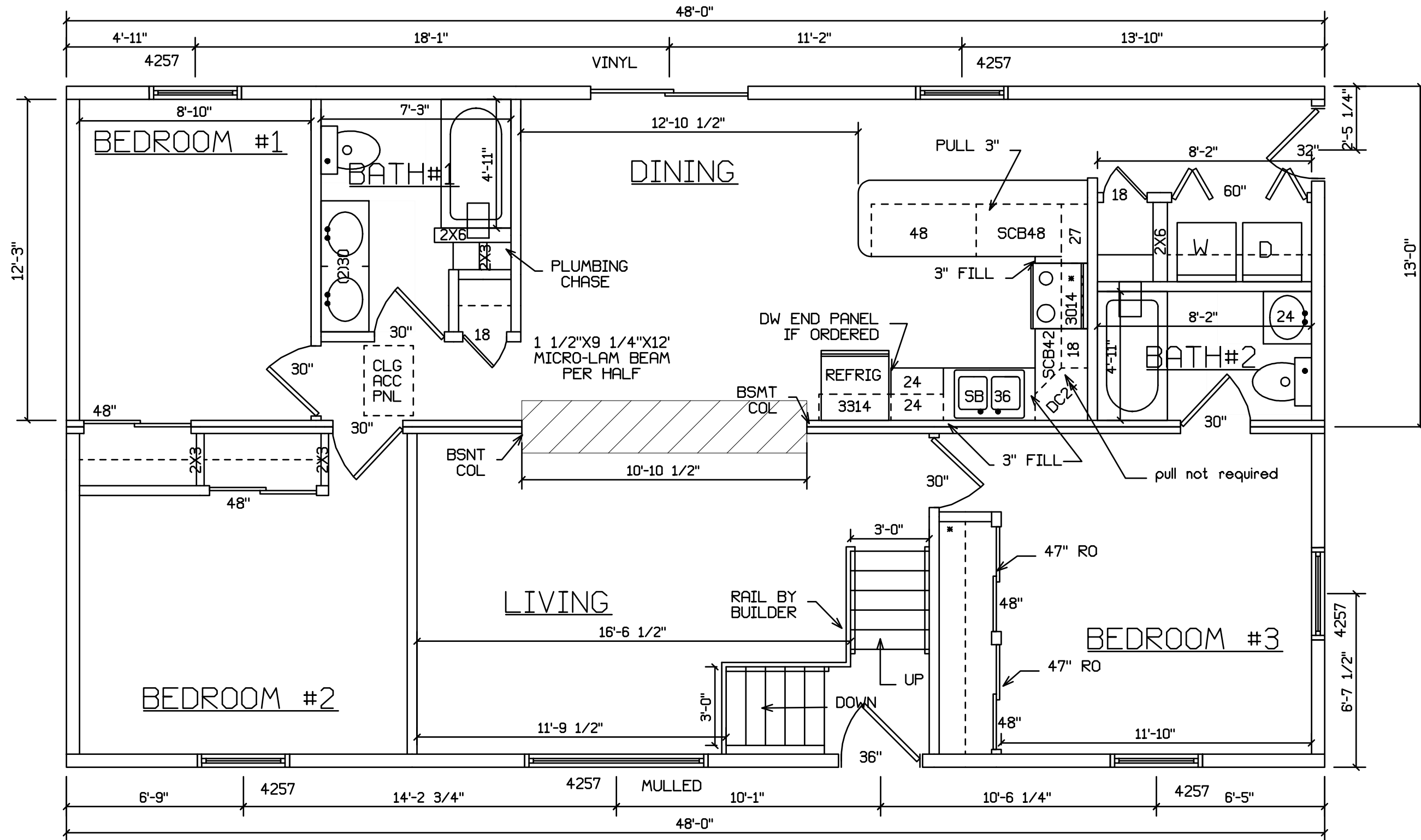
FINISH, WINDOWS, SHUTTERS, AND
STOOP BY BLDR ON SITE

SITE LOCATION

 HOLD BACK GYPBD 1'-0" PER
SIDE IN OPEN AREAS

STAIRS DESIGNED TO 8 1/4" RISE
MAX., AND 9" TREAD MIN W/ 1 1/8" NOSING

BLDR/DEVEL. AUTHORIZATION	DATE	# LABEL LOCATION	<i>Gregory J. Hayes</i> Production Engineer	SUPERIOR BUILDERS 1565 PA. RT. 442 E. MUNCY, PA. 17756 A DIVISION OF MUNCY HOMES, INC.	REV.
MANUF. AUTHORIZATION	DATE	CLG HGTH	PLANS HAVE BEEN EXTRACTED FROM APPROVED BLDG SYSTEM DOCUMENTATION		2-8-01
		DWN BY	DATE	SCALE	DATABASE
		HAYES	8/4/00	1/4"=1'-0"	260a
				BLDR / CUST	
				ORELAND 26X48 RAISED RANCH	



SITE LOCATION

 HOLD BACK GYPBD 1'-0" PER SIDE IN OPEN AREAS

STAIRS DESIGNED TO 8 1/4" RISE MAX., AND 9" TREAD MIN W/ 1 1/8" NOSING

BLDR/DEVEL. AUTHORIZATION	DATE	# LABEL LOCATION	<i>Gregory J. Hayes</i> Production Engineer	SUPERIOR BUILDERS 1565 PA. RT. 442 E. MUNCY, PA. 17756 A DIVISION OF MUNCY HOMES, INC.	REV.
MANUF. AUTHORIZATION	DATE	CLG HGTH	PLANS HAVE BEEN EXTRACTED FROM APPROVED BLDG SYSTEM DOCUMENTATION		2-8-01
		DWN BY	DATE	SCALE	DATABASE
		HAYES	8/4/00	1/4"=1'-0"	260a
				BLDR / CUST	
				ORELAND 26X48 RAISED RANCH	