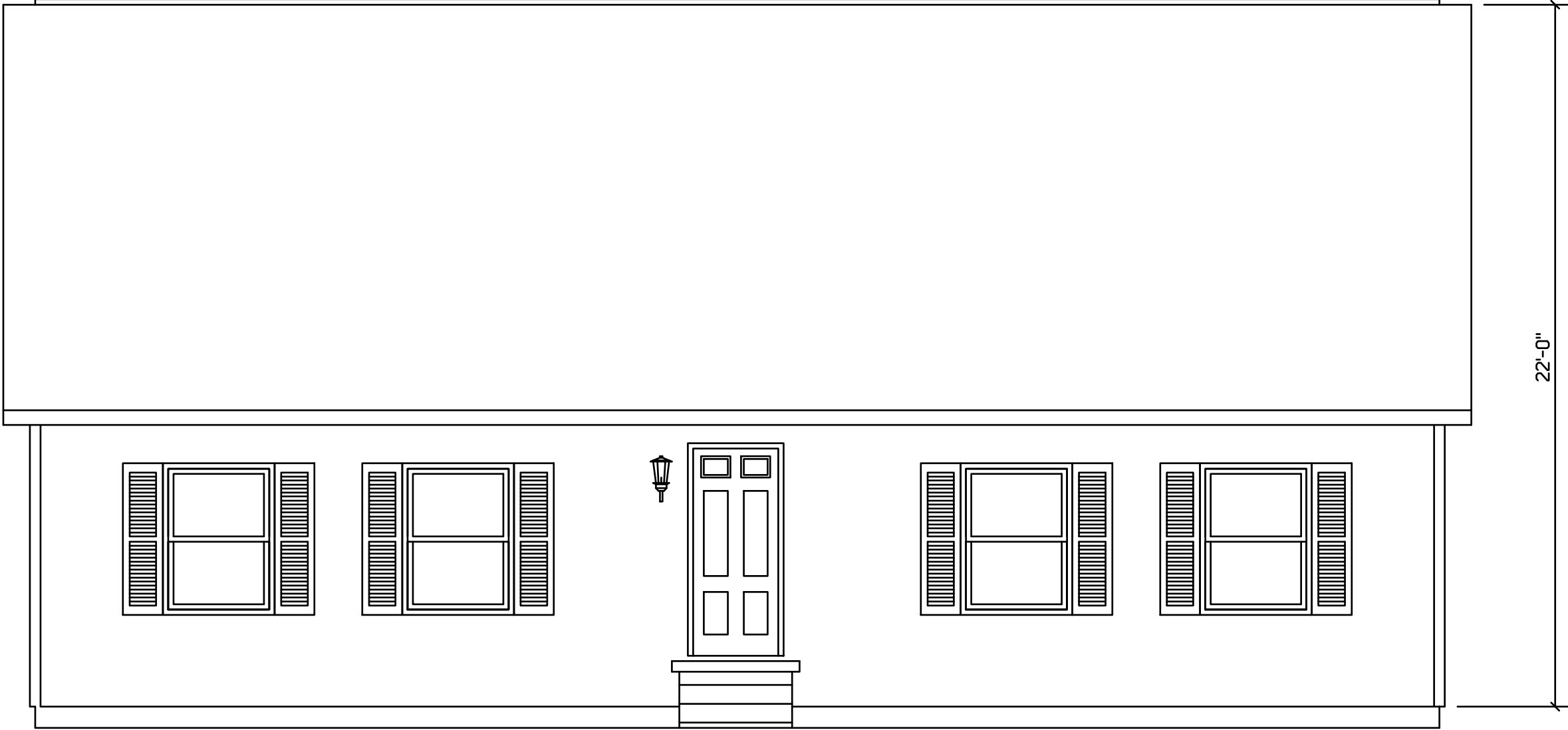


CAPE AUBURN #107

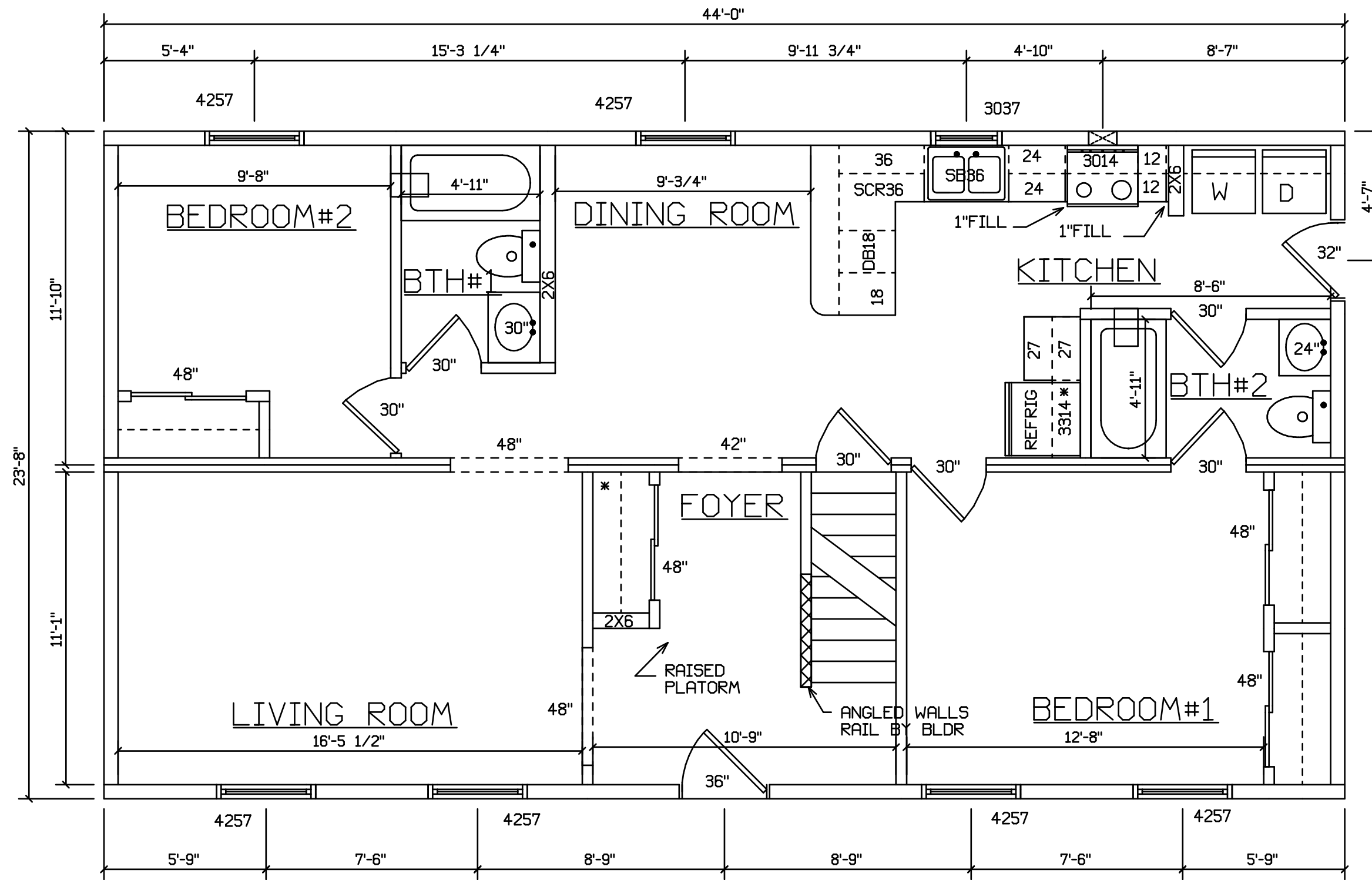


FRONT

SITE LOCATION  
-----

STAIRS DESIGNED TO 8 1/4" RISE  
MAX., AND 9" TREAD MIN W/ 1 1/8" NOSING

BLDR/DEVEL. AUTHORIZATION	DATE	# LABEL LOCATION	<i>Gregory J. Hoyer</i> Production Engineer	<b>SUPERIOR BUILDERS</b> 1565 PA. RT. 442 E. MUNCY, PA. 17756 <b>A DIVISION OF MUNCY HOMES, INC.</b>	REV.				
MANUF. AUTHORIZATION	DATE	CLG HGTH	PLANS HAVE BEEN EXTRACTED FROM APPROVED BLD'G SYSTEM DOCUMENTATION		BLDR / CUST	DATABASE			
		DWN BY	LITZ	DATE	5-3-01	SCALE	1/4"=1'-0"	FRONT	107a



SITE LOCATION

STAIRS DESIGNED TO 8 1/4" RISE  
MAX., AND 9" TREAD MIN W/ 1 1/8" NOSING

BLDR/DEVEL. AUTHORIZATION	DATE	# LABEL LOCATION	<i>Gregory J. Hayes</i> Production Engineer	<b>SUPERIOR BUILDERS</b> 1565 PA. RT. 442 E. MUNCY, PA. 17756 A DIVISION OF MUNCY HOMES, INC.	REV.
MANUF. AUTHORIZATION	DATE	PLANS HAVE BEEN EXTRACTED FROM APPROVED BLDG SYSTEM DOCUMENTATION			DATABASE
		DWN BY	DATE	SCALE	FLOOR PLAN
		LITZ	5-3-01	1/4"=1'-0"	107a

CAPE AUBURN #107  
WITH OPTIONAL 60" DORMERS



FRONT

SITE LOCATION  
-----

STAIRS DESIGNED TO 8 1/4" RISE  
MAX., AND 9" TREAD MIN W/ 1 1/8" NOSING

BLDR/DEVEL. AUTHORIZATION	DATE	# LABEL LOCATION	<i>Gregory J. Hayee</i> Production Engineer	<b>SUPERIOR BUILDERS</b> 1565 PA. RT. 442 E. MUNCY, PA. 17756 <b>A DIVISION OF MUNCY HOMES, INC.</b>	REV.
MANUF. AUTHORIZATION	DATE	CLG HGTH	PLANS HAVE BEEN EXTRACTED FROM APPROVED BLD'G SYSTEM DOCUMENTATION		DATABASE
		DWN BY	LITZ	SCALE	107a
		DATE	5-3-01	1/4"=1'-0"	
				BLDR / CUST	
				FRONT	